

MAR 15 1905

VICTORIA, B. C.

# THE ATLIN CLAIM.

VOL. 12

ATLIN, B. C., SATURDAY, MARCH 4, 1905.

NO. 294

## TELEGRAMS.

London, 26th Feb.—The betrothal is announced of Princess Victoria of Connaught to Prince Oscar, eldest son of the Crown Prince of Norway.

Hot Springs, Ark., 26th Feb.—Two hundred and fifty buildings were destroyed by fire here today. The burned district covers a mile square. Water gave out at 5 a. m.

Moscow, 26th Feb.—The police are satisfied that there existed a plot of considerable proportions against Duke Sergius, but they are completely baffled in their efforts in tracing it.

Paris, 26th Feb.—The Commission on the North Sea Incident finds: "The opening of fire by Rojestvensky not justified." The commissioners declare views as formulated and are not of a nature to cast any disrespect upon the military valor of Rojestvensky and the personnel of the squadron.

Washington, 26th Feb.—The Russian government directed the naval officers who broke their parole and escaped from the Lena, at San Francisco, to return to their ship.

Warsaw, Feb. 27th.—Murderous attacks occur daily on the police or small patrols in the streets. The police is inadequate to handle the strikers. A general strike of shop assistants and domestics is expected.

Cherbourg, 27th Feb.—The Russian Third Pacific Squadron coaled off this port today and continued westward.

Montreal, 27th Feb.—It is reported that Tarte will receive an important appointment from the Laurier government.

San Francisco, Cal., 28th Feb.—In the Nelson-Corbett fight tonight, honors were entirely with the former until the ninth round. He had Corbett so badly punished that the latter's seconds "threw up the sponge."

St. Petersburg, Feb. 28th.—There is fighting on a large scale in progress in Manchuria along the entire front of one hundred miles. Under heavy artillery fire from Putiloff Hill, the Russians succeeded in driving the Japanese from a number of positions. They also captured a railroad bridge across the Shakhe River in the center of the Japanese lines, repulsing ten determined attacks.

Victoria, B. C., 28th Feb.—The local government may offer inducements to the Grand Trunk Pacific to commence construction on the Pacific coast at an early date, and then appeal to the country on this popular measure.

Ottawa, 1st March.—Hon. Clifford Sifton has resigned the portfolio of Minister of the Interior on

account of his inability to support the educational clause of the Northwest Autonomy Bill. Other Liberals announce their inability to support the government on this issue.

St. Petersburg, 1st March.—Gen. Stoessel arrived here this morning. The absence of naval officers at the station was very noticeable. Crowds cheered, but the reception was by no means popular. The demonstration lacked enthusiasm.

Olympia, Wash., 1st March.—According to information which leaked out, the Fisheries Protective measure, calling for a short season, will not become law.

Vancouver, 1st March.—A new first class steel steamer for the C. P. R. Co., to run on the Skagway route, is now on the way from Glasgow to this city.

The Grand Duke Sergius, who was blown to fragments on January 17th, was a man who was universally hated by the Russian people. His advice to the Emperor throughout the present crisis had been acted largely upon. The liberals stigmatized him as Russia's evil genius. The main secret of Sergius' power lay in the fact that his wife and the Czarina are sisters, she having been Princess Elizabeth of Hesse.

## Practical Arithmetic.

A school teacher received the following epistle from a complaining parent:

"Sir: Will you please for the future give my boy sum easier some to do at nites. This is what he brought home two or three nites ago. If fore gallins of bere will fill thirty-to pint bottles, how many pint and half bottles will 9 gallins fill? Well, we tried, and could make nothing of it at all; and my boy cried and sed he wouldn't go back with out doing it. So I had to go and buy a 9 gallin keg of bere, which I could ill afford to do, and then we went and borrowed a lot of wine and brandy bottles, besides a few we had by us. Well, we emptied the keg into the bottles and there were 19 and my boy put that down for an answer. I don't know whether it is rite or not as we spilt some in doing it.

"P. S.—Please let the next one be in water, as I am not able to buy any more bere."—Selected.

California, two years ago, made a law regulating the miners's inch. Previous to that time the miner's inch was a very irregular quantity. It is now made uniform and is the amount of water which will flow through an opening an inch square under a head of four inches; this is equivalent to one and a half feet a minute.

## HOCKEY.

The rival hockey teams of Atlin and Discovery have for several weeks past met at either Atlin or Discovery to settle the burning question of supremacy in this winter game. Last Saturday, a battle was fought on the Atlin Rink, and but although the Discovery men put up a good fight, they were defeated by 3 goals to 1 by their Atlin opponents.

A hockey match between Atlin and Discovery comes off at the Discovery rink this afternoon, at 2.30.

## Fresh Arrivals.

Mr. J. D. Lumsden returned from the Coast last Sunday afternoon, having made the trip in four and a half days from Vancouver—almost a record trip in the winter season. He came up on the S. S. Amur, which left Vancouver on the morning of the 22nd ulto. at 1.45 and reached Skagway at 7.30 a. m. on Saturday, the 25th. He speaks in the highest praise of the officers of the Amur, every one of them trying to make it as pleasant as possible for the passengers. Mr. Lumsden consulted an eye specialist and had his eyes thoroughly tested, and we are glad to hear that his sight will soon be completely recovered again, although for the time being he has to wear glasses.

Miss Burgess, who was appointed nurse at the Hospital, and formerly of the City Hospital at Vancouver, arrived on Dixon & Schultz stage from Carcross, Sunday, along with Mr. J. D. Lumsden.

Mr. J. H. Richardson has arrived back in Atlin from the Coast, where he made a business trip. He has selected an up-to-date stock of dry goods which his many patrons here and on the creeks will duly appreciate.

Mr. Tallmire arrived back in Atlin from the outside on Thursday afternoon.

## Tit-Bits.

The power going to waste at the Victoria Falls on the Zambesi River, South Africa, is calculated at 25,000,000 horse power, or five times that of Niagara.

The difference between the common steam engine and the steam turbine is that in the former the steam acts almost wholly by pressure, while in the latter it acts by its motion.

"No taskmaster but one's own enthusiasm" is a motto to win results.

The man who strictly attends to his own business will never be accused of slandering his neighbors.

Fresh lot of eggs at N. C. Wheelings.

## Mining News.

### Hydraulic Leases.

The following leases have been applied for on Volcanic Creek, having all been staked on February 19th: "Silver Tip," by G. Wallace; "Bullion Creek," by A. S. Campbell; "High Bred Creek," by J. H. Fetherstonhaugh; and "Volcanic Creek" lease, by J. H. Fetherstonhaugh.

Arthur C. Denniston, of Philadelphia, has made arrangements this week to buy the following thirteen leases, situated on Spruce Creek:

"Solomon" lease, owned by Leatherdale, Lambert and Jackson; "Julius Caesar," by Harry Dewey; "The Demosthenes," by J. T. Prescott; "The Isocrates," by James Carlson; "A" lease, by R. A. Jackson; "B" lease, by A. C. Jackson; "C" lease, by Thos. Stewart; "D" lease, by R. A. Lambert; "I" lease, by R. Dymond; "F" lease, by J. Leatherdale; "Lucy," by J. Knight; "Old Glory," Mr. Richards; "C" lease, by M. E. Robinson.

The sheriff's sale of "The Sunflower" and "The McNeil" placer claims on Spruce Creek, at the Court House on Wednesday, brought quite a number of miners to town; but owing to some legal hitch the sale was postponed until March 22nd.

## Institute of Mining Engineers.

An excursion, composed of members of the American Mining Engineers, will visit British Columbia during the coming summer. Meetings will be held in Victoria, where the party will remain several days. This visit will be of the greatest importance to the Province, as it will bring together the most important representatives of the mining interest. The party will start from Chicago or St. Paul on June 24th, by two special trains. From Victoria a specially chartered steamer will convey the party to Skagway, stopping at places of interest along the coast, and go on to Dawson.

Atlin miners are stated to have a grievance, namely, that in their district there is much unworked ground held by leaseholders who are not complying with development and rental conditions of their leases. A strict enforcement of the law in such cases is urged, so that no "dog-in-the-manger" policy may be followed by leaseholders. Either insist that conditions be observed or throw the ground open to others who will work it, is what is asked, and what should be promptly granted.—B. C. Mining Record.



## The Atlin Claim.

THE ATLIN CLAIM is published every Saturday morning, mailed free to any part of the world for 50 cents per month; \$5.00 per year. ADVERTISING RATES: \$1.00 PER LINE EACH INSERTION; HEADING NOTICES, 25 CENTS A LINE SPECIAL RATES ON APPLICATION.

JOB PRINTING: BILL-HEADS, LETTER-HEADS, PROGRAMMES, ETC., ETC. ORDERS PROMPTLY EXECUTED. PRICES MODERATE.

THE ATLIN CLAIM PUBLISHING CO.

A. C. HIRSCHFELD, PROPRIETOR.  
JAMES SIMPSON, MANAGER

## The Cemetery.

We would draw attention to the state of the burial ground; and suggest that a company should be formed to take over its management and improve its appearance. Although befittingly garbed at this season in the purity of snow, it is for the greater part of the year without such covering—exposing its weeds and defects,—in fact, an eyesore to the public.

The laws of British Columbia, in reference to such grounds, seem to be only and specially directed as a guide to the manner in which cemetery companies should be conducted. The appropriated land in question is in the hands of three trustees; but unless a company be formed, it is difficult to see how lands are to be obtained to clear and fence it, to make foot paths and lay turf over the graves, and in other ways embellish and beautify God's-acre.

Now, it is with the residents of the District to decide whether the cemetery is to be kept in a clean and proper condition, or left in a state of neglect.

We feel sure, that, with most of us, it is a natural desire that it should be made a neat and pleasant place to look upon, in respectful memory of those who have joined the great majority; and we hope that any endeavours made towards this end will be rewarded with due success.

Correspondence on this subject through The Claim is desired.

## The Atlin-Taku Road Commented Upon.

[From the British Columbia Mining Record.]

The construction of a wagon road from Atlin to salt water at the head of Taku Inlet is being advocated at Atlin. It is claimed that with such a means of communication freight could be hauled in from the coast at all times of the year and that, too, at a lower cost than is now paid. Further, that if the merchants could obtain supplies as required and not have, as now, to get in large stocks in the fall for the necessities of the winter and early spring months, prices would not be so high as under existing conditions. With cheaper provisions, etc., individual miners could afford to work ground that at present cannot be worked at a profit. Again, the payment of money to freighters would lead to a larger share of it being circulated locally than is the case now that railway and other

transportation companies pay their profits to non-residents. It is estimated that the distance by the old Hudson Bay trail to Juneau is 168 miles, but less than 100 to the head of navigation on Taku River. An easy grade is said to be obtainable and materials for road-making are at hand. The proposal is looked upon locally as feasible, and an endeavor is being made to provide funds for sending a civil engineer over the proposed route. If the building of this road be found practicable at a reasonable cost, the carrying out of the work will be supported by most concerned in advancing the interests of a camp that, since the discovery of gold in it in 1898, has contributed about \$3,000,000 to the mineral production of the Province.

## Vancouver Island.

The acquiring of the B. & N. Railway by the C. P. R. is likely to be attended with gratifying results with respect to the mining industry of Vancouver Island. It is reported that the company has in view the erection of a smelter on the west coast of the Island, which would give a decided impetus and an era of marked activity to the many mines in that section. Railway construction to the northern and through the central portion of Vancouver Island, it is supposed, is connected with the plans of the C. P. R. Co.

## Goldfields, Nevada.

Goldfields, 22 1/2 miles from Tonopah, Nevada, is the mining excitement of the present time. Since its discovery last spring, over \$2,000,000 worth of ore has been shipped from the district, most of the shipments being made during the last five months. The ores are very high-grade; one shipment of 14 1/2 tons from the Sandstrom Claim yielded \$45,783, while the tailings from the stampmill still contained \$1,000 to the ton. From the McKane-Bowen Lease, in the last five months \$600,000 was taken from a space of 100 ft. horizontally and 200 ft. vertically on the sheet, one small shipment of 917 pounds of ore yielding \$4,766. The values are all in gold and the production of the camp to date has been from \$200 to \$300 ore.

Mr. Geo. C. Moore, who spent the summers of 1903 and 1904 in the Atlin Camp, says: "It is going to be one of the greatest mining camps ever known. The values begin on the surface. No one is over 300 ft. deep and millions have come out. Assays as high as \$35,000 per ton have been made." Mr. Moore has met Dick Maunsell who has many friends in Atlin. Maunsell says he has many good claims. Ross Thompson, the founder of Roseland, and Lindeburg, the discoverer of Nome, are also there.

## WANTED.

MEN AND WOMEN in this county wishing to join territories to present and advertise an old established house of solid financial standing. Salary to men \$21 weekly, to women \$12 to \$18 weekly with expenses advanced each Monday by check direct from headquarters. Horse and buggy furnished when necessary. Position permanent. Address, Blew Bros. & Co. Dept. 5, Mason Bldg., Chicago, Ill.

## Useful and Ornamental Goods

WHY SEND OUT WHEN YOU CAN GET GOODS AS CHEAP HERE?  
Atlin, Nugget and Grape Rings and all kinds of Jewelry manufactured on the premises.  
Fine New Stock of Watches, Clocks, Jewelry and Diamonds  
Watches from \$5.00 up.  
Silverware, Cut Glass, Hand Painted China, Souvenir Spoons.

JULES EGGERT & SON, ATLIN AND DISCOVERY,  
WATCHMAKERS AND MANUFACTURING JEWELERS.

J. H. RICHARDSON,  
ATLIN & DISCOVERY.

Full Line of Clothing Just From the East

THE LATEST STYLES.

Complete Stock of Dry Goods

THE LATEST IN HATS, BOOTS AND SHOES.  
Gold Seal Gum Boots.

Our Goods are the Best and Our Prices the Lowest.

## The Rise and Fall.

The lowest and highest temperatures recorded for the week are as follows:

Feb. 25	16 above	40 above
26	26	37
27	26	21
28	23	40
1	20	36
2	23	34
3	1	15

## It Will Pay You

To send "The Claim" to your friends, instead of losing time writing letters. It endeavours to publish every week all the principal news of this District. Price, to any part of the world, six months, \$2.50; one year, \$5.00.

## C. P. R. Co.

—ALASKA ROUTE SAILINGS—

The following Sailings are announced for the month of March, leaving Skagway at 8 p. m.:

Princess May: March 6th, 16th and 26th and April 5th.

For further information, apply or write to H. B. DUNN, Agent, Skagway, Alaska.

## E. M. N. WOODS,

BARRISTER-AT-LAW.

Has taken an Office at Room 1, Gold House, Discovery. Office hours—Tuesdays, Thursdays and Saturdays, from 8 to 8 p. m.

## PORTRAIT GALLERY

If you want to have the portrait taken of yourself or children,—we shall try and please you.

Portrait Gallery—Old B. N. A. Building, Corner First and Pearl Atlin. Open on Tuesdays and Saturdays, from 10 a. m. to 3 p. m., or by special appointment.

We will take out-door or underground pictures, 3 1/4 x 4 1/2, plain mounted, at the following rates:

\$5.00 per Doz.  
3.00 " Half-Doz.

5 x 7, mounted:

\$8.00 per Doz.  
5.00 " Half-Doz.

Picture Post Cards:

\$3.00 Per Doz. or under.

ATLIN STUDIO.

## The Royal Steam Laundry

Beg to announce that they have reopened and are now ready for business. They take this opportunity to thank their former patrons and respectfully solicit their further patronage.

Mrs. M. FENN,  
Proprietress.

## J. W. McFarlane, C. E.

ATLIN, B. C.

## Tunnel Survey, \$15.

Plans and Specifications for Steam Shovels and Hydraulic Plants on application.

## HOTEL VANCOUVER.

THIS HOTEL IS STOCKED WITH THE BEST OF GOODS

Sam. Johnstone, Prop.

## Pine Cree Hotel

DISCOVERY, B. C.

Tasty meals, fine liquors, good cigars, and soft beds, make it a pleasant home for all travellers.

ED. SANDS, Proprietor.

## Dixon & Schulz, Proprietors.

## Nugget Hotel

Discovery.

OPEN DAY AND NIGHT.

FIRST-CLASS RESTAURANT

IN

CONNECTION.

Headquarters for Dixon's stage.

## Northern Power & Lumber Co., Ltd.

Until further notice the following will be the prices of Lumber:

Rough, up to 8 inches, \$40.  
do do 10 " 45.

do do 12 " 50.  
Matched, \$50.00

S. D. \$5.00 & D. D. \$10. extra.  
12 1/2 per cent discount will be allowed for cash at time of ordering.

**ATLIN TRADING COMPANY, Ltd.** Importers and General Merchants.

Staple and Fancy Dry Goods,  
Ladies' and Gent's Felt Slippers,  
Ready-Made Clothing,  
We carry a full line of the celebrated Gold Seal Rubbers and Overshoes.  
GOODS DELIVERED PROMPTLY ON THE CREEKS.

Our stock of Staple and Fancy Groceries  
is larger than ever and all at close cash prices.  
Remember every article we sell we guarantee to be first class.  
A. S. CROSS, Pres.

**Boulder Creek.**

(By our Correspondents.)

Although you have not heard from the creek for a good long time, don't think we're dead. "No news is always good news."

The miners are having a very pleasant season, owing to the very mild winter. All are enabled to sluice the dirt as it is taken out, and the clean-ups are quite favorable.

Our noted Dr. W. G. has left for town on a business trip.

We are getting on satisfactorily. Plenty of water to sluice with, even for Black & Co., who again made one of their large clean-ups last week.

Most of the outfits on the creek are well satisfied with what they are doing. The Beaton Boys seem to be especially favored.

Dr. Troughton visited friends on the creek during the early part of the week.

Newton and partners are doing well. You should just see "Old Charlie" with the wheelbarrow; it would do you good.

A pleasant evening was spent at the home of Dan McKenzie and John McDonald, recently purchased from Mick Smith. Among those present were Mr. Roxborough, who took the part of the medicine man. Dr. W. G. delivered a very excellent speech. Mr. H. Palmer was taken suddenly ill, but was attended to by our worthy Doctor; it was learned that nothing serious was wrong,—that he had taken too much of the wrong medicine. One of the features of the evening was the life-like representation of a nigger minstrel, as portrayed by Henry Palmer; it fairly "took the cake" and amused the "boys" immensely. A jolly time was kept up until a late hour, after which some of those present had a very delightful ride on a hand-sled to their home.

The "boys" drifting in the company's pit are doing very favorably, which serves them right.

Sam Barton and his associates are taking out good money.

Hornell, Spicer & Co. are progressing favorably and are enjoying the pleasures of sluicing in a petrified dump-box which saves them the expense of building a dump-house.

A card party was given at Sam Barton's, Tuesday evening, which was attended by a sleigh load from Discovery, and a good time is reported.

We are sorry to note that Mr. Frank McPhee will be absent from our circle, as he is a great favorite among the "boys." But we are pleased to hear he has secured a more suitable position—driving delivery rig for Mr. Doelker.

We think you will hear some-

thing of interest soon, that will rival Spruce Creek: one of our youthful bachelors is likely to become a benedict; but don't give it away.

Mr. John Gorman paid us a flying visit the early part of the week.

Mr. Alex. Fulton left for town on a business trip.

Jack Ronayne went to town lately; he has been suffering from the epidemic lately prevalent.

**The Spoken Word.**

Remember, three things come not back:  
The arrow sent upon its track—  
It will not swerve, it will not stay  
Its speed; it flies to wound or slay.  
The spoken word, so soon forgot  
By thee, but it has perished not:  
In other hearts 'tis living still,  
And doing work for good or ill.  
And the lost opportunity  
That cometh back no more to thee—  
In vain thou weepest, in vain dost yearn,  
Those three will never more return.

Not more than one-tenth of an ounce of radium is known to be in existence.

Apples in any quantities can be had at Stables & Lumsden's.

**Last Chance Mineral Claim.**

SITUATE IN THE ATLIN MINING DIVISION OF CASSIAR DISTRICT, CONSISTING OF THE LAST CHANCE MINERAL CLAIM, WHERE LOCATED—BETWEEN BIRCH AND BOULDER CREEKS, NORTH OF PINE CREEK.

TAKE NOTICE that J. M. R. Jamieson, agent for W. H. Brown, Free Miner's Certificate #21,200, and J. M. Downing, Free Miner's Certificate #34,891, and John Woods, Free Miner's Certificate, #34,892, intend, 60 days from date hereof to apply to the Mining Recorder for a Certificate of Improvement for the purpose of obtaining a Crown Grant of the above claim.

And further take notice that action, under section 27, must be commenced before the issuance of such Certificate of Improvement. Dated this 4th day of March, 1905.  
M. R. JAMIESON, F. M. C. #34,804.

**Queen Charlotte Mineral Claim.**

SITUATE IN THE ATLIN LAKE MINING DIVISION OF CASSIAR DISTRICT, WHERE LOCATED—ON UNION MOUNTAIN, HEAD OF LITTLE SPRUCE CREEK.

TAKE NOTICE that J. Henry Nicholson, Free Miner's Certificate No. #34,761, intend, sixty days from the date hereof, to apply to the Mining Recorder for a Certificate of Improvement, for the purpose of obtaining a Crown Grant of the above claim.

And further take notice that action, under section 27, must be commenced before the issuance of such Certificate of Improvements. Dated this 9th day of February, A. D. 1905.  
HENRY NICHOLSON.

**Job Printing**

Satisfaction guaranteed by the

**ATLIN CLAIM PUBLISHING CO.**

**O. K. BATHS BARBER SHOP**

F. SHIELDS & EDDY DURHAM.  
Now occupy their new quarters next to the Bank of B. C. A., First Street. The bath rooms are equally as good as found in cities. Private Entrance for ladies.

**THE ATLIN MARKET CO., LTD.**

FRESH DRESSED MEATS, also

POULTRY OF ALL KINDS, Dressed to Order.

C. DOELKER, Manager.

**THE KOOTENAY HOTEL**

OPEN DAY AND NIGHT.

THE DINING-ROOM IS CONDUCTED ON STRICTLY FIRST-CLASS PRINCIPLES.

**GOLD HOUSE,**

DISCOVERY, B. C.

STRICTLY FIRST CLASS.

JOE ROSE, Proprietor.

STA. E & LIVERY IN CONNECTION.

**THE RUSSEL HOTEL**

DIXON BROTHERS, Proprietors

Pool & Billiards, Free.

Freighting and Teaming Horses and Steigs for Hire.

**THE ROYAL HOTEL,**

V. TROTMAN, Manager.

Corner Pearl and First Streets, Atlin, B. C.

FIRST CLASS RESTAURANT IN CONNECTION.

CHOICEST WINES, LIQUORS AND CIGARS—CASE GOODS A SPECIALTY.

**The Canadian Bank of Commerce.**

CAPITAL PAID UP \$10,000,000.  
RESERVE, \$3,500,000.

Branches of the Bank at Seattle, San Francisco, Portland, Skagway, etc.

Exchange sold on all Points.

GOLD DUST PURCHASED—ASSAY OFFICE IN CONNECTION.  
D. ROSS, Manager.

**VANCOUVER ENGINEERING WORKS, LTD.**

VANCOUVER, B. C.

SPECIALISTS IN

**Hydraulic Mining Machinery.**

HYDRAULIC GIANTS, WATER GATES,  
RIFFLE BARS, STEEL RIVETTED PIPE,  
HOISTS, MINING CAGES AND ORE CARS.

MADE TO SPECIAL DESIGN.

Write for prices and cuts.



## Will Paper at Cost.

This is a good chance to do a little papering at a low cost and an opportunity that you should not miss.

## E. L. PILLMAN & CO.

### Local Events.

An extra dog team on mail route for Passengers, freight, express. Any orders left at Kirkland Hotel, with Mr. Walter Till, will be promptly attended to.

Mr. D. Todd Lees, who has been editor and proprietor of the British Columbia Lumberman, published in Vancouver, has sold his business to Mr. McLean of Winnipeg. Mr. Todd Lees is well known in Atlin, having been for some time manager of the Atlin Club.

McDonald's Grocery makes a specialty of fresh eggs and butter.

Messrs. G. A. Kerr and Chas. R. Bourne have been appointed to be License Commissioners for the Atlin License District, in the place of Messrs. A. S. Cross and J. A. Fraser, who have resigned. Mr. Jules Egger, who has been a member of the Commission, still holds the position.

The latest magazines and papers are always on hand at Pillman's.

A closed season for beaver throughout British Columbia for a period of five years, commencing February 1st, 1905, has been ordered by His Excellency the Lieutenant-Governor.

Well assorted stock of Plain and Fancy Toilet Soaps at C. R. Bourne's.

Atlin Lodge, A. F. & A. M., held its regular monthly communication at the Lodge Room on Thursday evening last.

The C. P. R. steamship Princess May has again been put on the Skagway-Victoria run. She sails from Skagway on March 6th, 16th and 26th.

The ladies of the Presbyterian Church are to give a concert and social on Friday, 17th March (St. Patrick's Day). Admission, 50c.; children, 25c. Further particulars later.

The Atlin Market Co. is having a large supply of all kinds of meat brought in, which will be due here in a few days.

Stables & Lumsden make a specialty of fresh Eggs and Butter.

Patients who have recently been in the Hospital, praise highly the treatment received at the hands of the nurses.

Dr. Scharschmidt of Whitehorse, superintendent of B. V. N. Navigation Co., and Mr. Sproat, his superintendent engineer, are expected here in a few days.

Musical Instruments, Strings, etc., for sale at C. R. Bourne's.

On last Monday's mail Mr. J. D. Lumsden received the sad news of the death of his mother, which took place at her home in Scotland. Mr. Lumsden has been receiving many expressions of sympathy from his numerous friends in his sad bereavement.

Mr. Sam Johnstone of the Vancouver Hotel returned on Wednesday from his vacation at the Hospital. This has been the first holiday Sam has taken in the past seven years.

Walter Aiken, whose health was in a precarious condition when leaving this Camp last fall, is returning in a few days, strong and healthy, which can be judged from the fact of his weight being now 185 pounds.

Mr. and Mrs. Petherstonhaugh are expected to arrive in Atlin, first Wednesday.

Fred Overlander is improving slowly and surely. A trapeze has been fixed up in the Hospital for his benefit, on which he takes regular exercise.

Owing to the warm and rainy weather of the past week, curling had to be postponed.

The Atlin Studio has obtained the assistance of a professional retoucher for portrait work, and we are now pleasing our patrons. The gallery will be open for only six weeks.

### Church Notices.

Church of England, St. Martin's Church—Sunday services: Matins at 11 a. m.; Evensong, 7:30 p. m.; Celebration of Holy Communion, 1st Sunday in each month and on special occasions; Sunday School; Sunday, at 2 p. m.; Committee Meetings, 1st Thursday each month. Rev. F. L. Stephenson, rector.

St. Andrew's Presbyterian Church hold services in the Church on Second Street. Morning service at 11; evening service, 7:30; Sunday School at the close of the morning service. Rev. E. Furlingston, minister.

### Cabins and Offices to Rent--

Apply at this Office.

## D. C. Wheeling

SUCCESSOR TO M. FOLEY

ATLIN CHEAP CASH STORE.

FULL LINE OF STAPLE AND FANCY GROCERIES.

Flour, Oats, Chop Feed, Bran, &c., &c.

## What is More Refreshing

After an evening's Skating or Curling, than a Cup of COCOA or CHOCOLATE, Gherardelli's, Baker's, or Van Houten's. Failing this, a Cup of Blue Ribbon, Nabob, Lipton's, or Ram Lal's TEA, or Crown Brand COFFEE.

We have a full line of the above mentioned goods, and our prices are right.

## STABLES & LUMSDEN.

## NORTHERN POWER & LUMBER CO., LTD.

Until further notice, the following will be the rates for Lights: all accounts collected monthly:

ELECTRIC LIGHT RATES:	
Installation	\$3.50 per Light
Rent of each Meter	Subscribers can be supplied at Meter rates: \$1.00 per month
8 Candle Power Incandescent	or at "flat" rates, as under: \$1.75 per month per Light
16 " "	3.25 " "
32 " "	5.50 " "

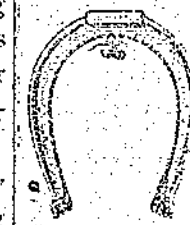
From and after the 3rd January, 1905, all Lights will be turned off at 2 a. m. and re-lit from 6 a. m. until daylight.

All burned-out or blackened lamps will be exchanged for new ones, free of charge, if brought to the Company's office, but broken ones will be charged for at 20 cents each.

The Company's Modern Steam Laundry has been let on lease to Mr. and Mrs. FEENE, who will collect and deliver all washing, receive payment for all washing, and pay all accounts in connection with the laundry.

## LOUIS SCHULZ, WHOLESALE AND RETAIL BUTCHER.

ATLIN, B. C.



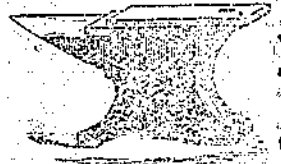
## J. D. DURIE

ATLIN, B. C.

SHELF AND HEAVY HARDWARE,

Tin and Granite Ware,

Miners' and Blacksmiths' Supplies, Doors and Windows, Furniture and Mattress Factory.



## NOW OPEN

## Northern Brewing Company, Ltd.

ATLIN, B. C.

BREWERS' LAGER BEER

SMALL AND LARGE ORDERS PROMPTLY FILLED.

## THE GRAND HOTEL

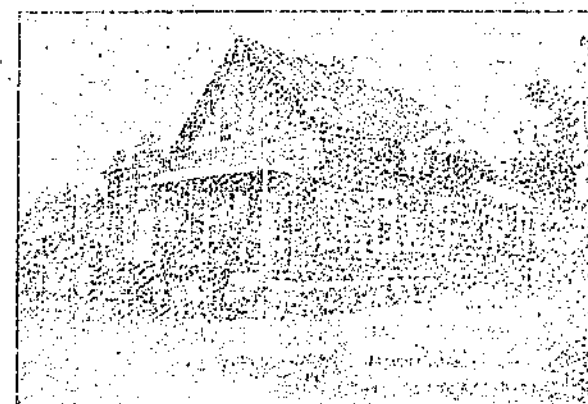
FINEST EQUIPPED HOTEL IN THE NORTH.

EVERYTHING CONDUCTED IN FIRST-CLASS MANNER.

Up-to-Date Restaurant in Connection.

FRED WRONG, Manager.

CORNER FIRST AVENUE AND DISCOVERY STREET, ATLIN.



## THE HALF-WAY HOUSE

is a haven for all travellers. The meals are first-class and the bar is refreshing as the dew of the early morning. An ideal summer and winter resort.

JAMES CLARK PROPRIETOR.