

The Anaconda News

7
49

EIGHT PAGES MOTHER LODGE MINE NUMBER EXTRA SPECIAL
Vol 5. No 15. WEDNESDAY, MARCH 22, 1905. 5 c. per Month

At the Mother Lode Mine

The new Crushing Plant—Ore Bodies on 60 foot Level—New
Diamond Drill—200 Level—Glory Holes.

The editor was a visitor at the Mother Lode mine last week. He saw many new things.

THE CRUSHING PLANT.

The new crushing plant has been in operation for some time, and runs without a hitch. The ore comes up in the big four ton skips at the rate of a trip every two minutes (from the level of the mule tunnel) and is dumped automatically into a bin at the head of the shaft. From this bin it is fed from gates directly into the crusher.

This method is an advantage over the old one as in this manner the crusher is supplied with a pretty steady stream of ore, instead of at one moment being worked to its full capacity and the next running empty.

After passing through the crusher the ore is run onto the conveying belt which takes it to the big bins.

IN THE MULE TUNNEL.

A large, well lighted passage now connects the station at the 60 foot level of the shaft with the mule tunnel. All the ore from the different quarries is now taken through this drift to the main shaft and dumped into the big pocket there.

Continued on page 5.

INDEX OF THE WEEK'S NEWS.

Mother Lode	Page 1
About Town	" 2
Temperature-Rainfall	" 3
Cultus Hehe	" 4
Mother Lode—Continued	" 5
Mining Notes	" 7
The Ore Bin	" 8

ABOUT TOWN

The recent rains have raised Boundary Creek nearly two feet.

Last week Mrs. Cavfield, Mrs. McAllister and Mrs. Mathison entertained at cards. Mrs. Warren and Mrs. Simmons gave teas.

Snowdrops and crocus are in bloom here, and peaches and cherries in the neighborhood of Spokane. The sea-

son is about three weeks in advance of the average.

Mayor Naden and Mr. J. R. Jackson of Anaconda returned from Victoria on Monday. It is reported that they were successful in their mission concerning the water and street grading questions.

ORANGES

The best Oranges of the season are in the market during this and the coming month. We are receiving weekly shipments of

PANSY BRAND

All sizes—35 to 60 cents per dozen

Smith & McEwen

Phone 21

DRINK—

Oregon Grape Wine

The

GREAT SPRING TONIC

Absolutely Pure and Unadulterated

For sale at the

Greenwood Liquor Co.

**HAMILTON
POWDER Co.**

—OF—

MONTREAL

High Explosives, Blasting & Stumping Powder, Fuse, Caps & Blasting Apparatus.

FACTORY NANAIMO B. C.

E. W. Monk

District Manager NELSON

50

Rainfall & Temperature.

March 13th to March 19th, 19

Rainfall	in.	Coldest	Warm't
Monday	...	M 23	M 46
Tuesday	T 22	T 50
Wednesday	W 24	W 59
Thursday	T 24	T 62
Friday	3-4	F 33	F 60
Saturday	1-3	S 30	S 57
Sunday	S 32	S 48
Total, W'k	11-12	W'k 22	W'k 62
Forward	8 2-3	Rec. -19	Rec. 98
To Date	9 3-4	Mean C.	Mean W.
Tot. S. Win.	50 1-8	W'k 27	W'k 55
C. W'k J. 9-15	4 1-2	General Mean C. & W., Week 41	
Av. T. Win.	26 1-3		
C. D. F.,	10 -19		

Abbreviations—Av.-average, C.-coldest, D.-day, F.-February, In.-inch, J.-January, Rec.-record, S.-snow, T.-temperature, Tot.-total, W.-warmest, Win.-winter, w'k-week.

If you want reliable mining news get a subscription to The Anaconda News. We do the rest.

Read our advertisements- -It will pay you.

You CAN'T forget The News.

Fine Furniture Iron Bedsteads

AT THE

O. I. C.

A. L. White & Co.

Vienna Bakery

Delivery to all places in Anaconda and Greenwood. Try our

Creamery Butter

THE BANK OF BRITISH NORTH AMERICA
Greenwood, B. C.

CULTUS HEHE

"Never mind, my young kid, I'm going up to see your mother about this."

"That's all right!" yelled back the small boy. "You just go right along up there. Pa filled a man full of buck-shot the other day for going to see my ma."

Booksellers—Stationers

OFFICE SUPPLIES a Specialty

Coles & Frith

'Phone No. 33

F. W. M'Laine

**MINES, REAL ESTATE, FIRE,
LIFE & ACCIDENT INSUR-
ANCE**

MONEY TO LOAN

Greenwood, B. C.

I. H. Hallett

Barrister & Solicitor

Greenwood, B. C.

Try one of our ads. It PAYS.

RUSSELL-LAW-CAULFIELD CO.

SOLE AGENTS FOR

Bennett's Gutta Percha Fuse

THE BEST FUSE IN THE WORLD

**Bealey Investment
and Trust Co'y**

FIRE INSUR-
ANCE, REAL
ESTATE, &
MINES

G. R. NADEN MNG. DIRECTOR
COPPER ST. GREENWOOD

THE CANADIAN BANK OF
COMMERCE
GREENWOOD

Dr. R. Mathison

Dentist

Greenwood.

MOTHER LODGE.

From page 1

This work around the shaft is all in ore. The drift from the station to the mule tunnel is in ore with the exception of about fifty feet near the latter. On each side of this barren streak are huge leads, that to the south being a very recent discovery, and extending in width over 160 feet. One exploratory tunnel is still in very nice ore that appears to turn on into the mountain, while others in all directions prove this body to be of very large extent.

No work has been done recently on the big stopes opened up on the new ore body in the end of the mule tunnel on account of all hands being required to get the new

crushing plant into shape. However, operations will be resumed there before long.

DIAMOND DRILL ON 200.

Nothing has been done on the 200 and 300 foot levels for over two years, with the exception of diamond drilling.

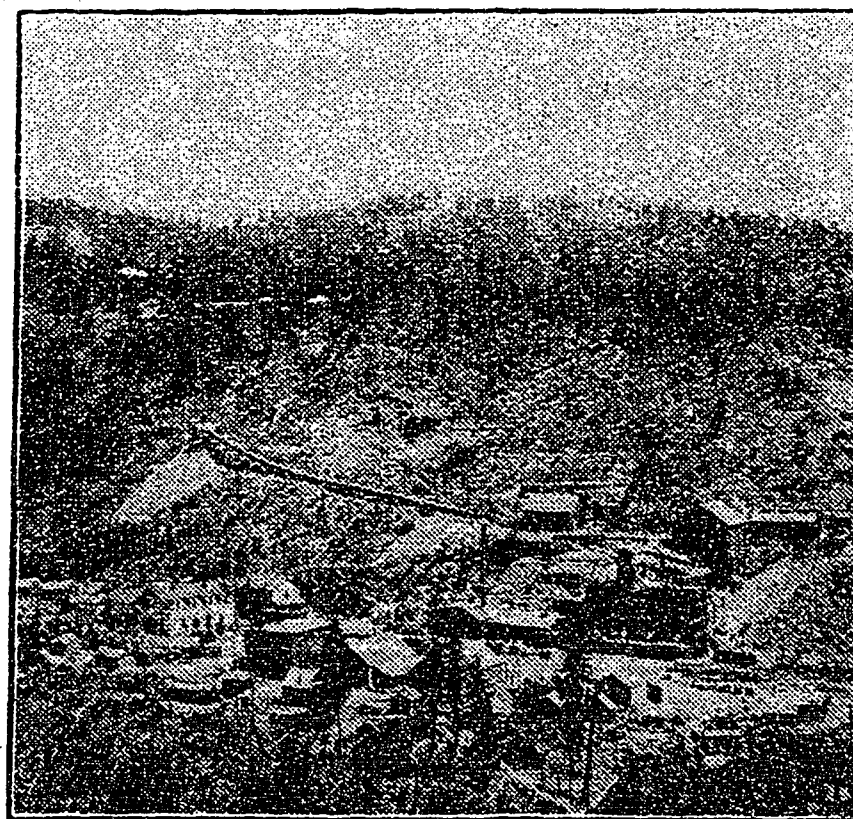
More of this drilling will be done here and in other parts of the mine as soon as the new diamond drill machinery now on the road is received.

This method of exploration is as satisfactory in proving ore bodies as tunneling, and

has the advantage

of being much cheaper and a great deal more rapid. The drill is operated by an engine that gives it a rapid cir-

Continued on page 6.

**Mother Lode Mine.**

MOTHER LODGE.

From page 5

cular motion; the feed is automatic. A stream of water is constantly forced to the cutting head and carries out the borings which are preserved for assay. The drill shafting is made up of short lengths of piping, the length next to the drill head being fitted to receive the core.

THE GLORY HOLES.

The glory holes have been greatly enlarged since the last visit of the editor. The excavations now measuring some 600 feet long, 50 to 100 feet wide, and about 150 in depth. Five shutes now connect the quarries with the mule tunnel, and a sixth is in course of construction. All of the formerly separate glory holes are now merged into one, with only ridges to mark the former separations. The depth has become so great that rocks are seldom thrown onto the flat by even the heavy holes. Over a half million tons of ore have been taken out of this quarry to date.

The Hunter-Kendrick

Company, Limited

**SUMMER WAISTS**

We want to have a little talk with you on—
"WHAT TO WEAR"

51

MINING NOTES.

On the Last Chance rich ruby silver ore has been struck.

The Winnipeg mine has been drained of water to the 200 foot level. Six men are now employed there.

On the Barbara a strike of rich silver gold ore was made some time ago.

OLD COINS

BOUGHT

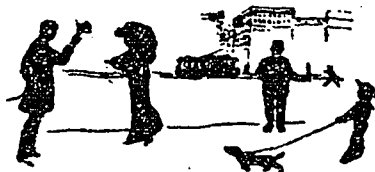
SOLD OR

EXCHANGED

MARTIN ANDERSON

TOWN LOTS SELLING CHEAP

Houses
& cabins
to rent



This is
the com-
ing town

GARLAND & CO.

Smith & McRae

Photo Supplies

Books, Stationery Wallpaper, Etc.

S. BARRY YUILL

Practical Watchmaker & Jeweler

GRAND FORKS
STAGE OFFICE

Copper Street, Greenwood, B. C.

You Cannot Have

CHAPPED HANDS

If you Use

White's Witch Hazel Cream
WHITE BROS.

Dispensing Chemists

Greenwood

P. BURNS & CO

During the Oyster Season, which is now on, we will keep a supply of fresh

OYSTERS

GAUNCE & WICKWIRE

The Mart

Real Estate.

Fire & Life Insurance.

