

Frederic Wood Theatre

**The
Winter's
Tale**



Costume Design
By
Brian H. Jackson

A Note On The Winter's Tale

By
Rick Williams

The Play

The title of this play puts the audience in mind of the seasons, and the changes they reflect, thereby making humans aware of time. And time and its processes are a central concern of *The Winter's Tale*. The play begins in winter, where we immediately witness the accelerating plunge into violent extremes which is characteristic of tragedy, and also the increasing isolation of the main character. Leontes loses all sources of human contact - he becomes estranged from his wife, his life-long friend, his son, daughter, councilors, court, and even the higher powers, as represented by the oracle. Leontes's actions are unnatural and they call forth a response from the natural world: from the wild animals, the storm at sea, and a kind of permanent winter in his kingdom. And with all this comes the final realization that his own flawed behavior is the origin of all the suffering.

In the source from which Shakespeare transformed the tale, the story ends here with the king's suicide. But this is only the beginning of *The Winter's Tale*. At the end of the second act, the audience suddenly sees the action shift outside of the court and the tragedy and into the world of shepherds and country folk who are intimately connected, through their livelihoods, with the cycles of nature. A sixteen year gap in time provides a connection between the seasonal cycles and the cycle of human generations, as well as an opportunity to go through and beyond the tragic fall, and explore what happens on the other side.

The Plot

Leontes, King of Sicilia, suspects his wife Hermione of adultery with his life-long friend Polixenes, King of Bohemia. His rage forces Polixenes to flee, Hermione to die of shame, and then he has her new-born daughter taken to a desolate coast, and left there by Antigonus, one of his lords.

The oracle of Apollo declares that Hermione is innocent, that Leontes is a jealous tyrant, and that he will die without an heir should he fail to recover "that which is lost". The oracle is confirmed by the death of Mamillius, Leontes's son. Reproached by Paulina and repenting of his obsessive jealousy, Leontes goes into mourning.

The infant daughter, Perdita, is found by the country people of Bohemia, who cherish her. As Leontes pines, Perdita grows into a beautiful and graceful woman. Florizel, son of Polixenes, falls in love with her despite her poverty and seeks to marry her without his father's knowing. When discovered by Polixenes, Florizel and Perdita flee. They reach Leontes's court, where it is discovered that the girl is the lost princess. Perdita is married to Florizel, Leontes is reconciled to Polixenes and Hermione is restored to life.

Frederic Wood Theatre

The Winter's Tale
March 4-14, 1987

A Publication Of

**UNIVERSITY
PRODUCTIONS INC.**

#202 - 2182 West 12th Avenue
Vancouver, B.C. V6K 2N4
(604) 224-7743

Publisher
Joseph G. MacKinnon

Director of Sales
Doug Henderson

**Attention:
Frederic Wood
Theatre
Audience
Come and Enjoy:**

Music and Shakespeare

Join UBC Faculty Members Ray Nurse and Reg Ingram to discover more about the fascinating relationship of Music and Shakespeare.

Four Monday Evenings
March 23 - April 13

Page And Stage

A Series of Seven Stimulating Lectures On The Plays Being Presented At This Year's Oregon Shakespearean Festival in Ashland
Seven Monday Evenings
June 1 - July 13

Shakespearean Festival Study Tour to Ashland Oregon

Includes Set of Seven Tickets to Plays by classical masters and modern mavericks.
July 20-26

For Information Call
Creative Arts Program
UBC Centre for
Continuing Education
222-5254

99 CHAIRS

UBC 's First Neighbourhood Pub

Friendly place to
get together and
relax after your
evening at the
theatre

Located in
Fairview Crescent
(Behind the 'Frat' Houses)
OPEN 5 P.M. to Midnight

The FIREPLACE LOUNGE

At The
Graduate Centre
Located Right Across
The Street From The
Frederic Wood Theatre

"We invite you to come
and enjoy our new
facilities combining the
comforts of a classy
home with the menu of an
English Pub !"

Mon. - Thur.
11:30 a.m. to 11:30 p.m.
Friday 11:30 a.m. to 1:00 a.m.

The Winter's Tale By William Shakespeare

Directed By Ray Michal

Set And Lighting Design By
Robert Gardiner

Costume Design By
Brian H. Jackson

Sound Design By
Stephen Fearing

Choreography By
Grace Mac Donald

Original Music Composed By
Earle Peach and Stephen Fearing

Cast
In Order Of Appearance

Archidamus, *a lord of Bohemia*. Jason Smith
Camillo, *a lord of Sicilia*. Dennis Kuss
Polixenes, *King of Bohemia*. Timothy Hyland
Leontes, *King of Sicilia*. Lawrence Kagan-Ball
Hermione, *Queen to Leontes*. Susan Elworthy
Mamillius, *young Prince of Sicilia*. Ezra Cannon
Emilia *Ladies -in-waiting to Hermione* Janine Payne
Bianca Cara Tekatch
Antigonus, *a lord of Sicilia*. Neil Gallagher
Four lords of Sicilia Jamie Binkley, Alan Saugstad,
. Peter Shaver, Bryson Young
Paulina, *wife to Antigonus*. Cynthia Ford
Nurse. Barb Cormack
Cleomenes *Lords of Sicilia* Roland Brand
Dion John Murphy
Mariner. Jason Smith
Old Shepherd, *reputed father of Perdita*. Michael Fera
Young Shepherd, *his son*. Tom Jones
Time. Alan Saugstad
Autolycus Mark Weatherley
Florizel, *son to Polixenes* Neil Ingram
Perdita, *daughter to Leontes*. Katey Wright
Dorcas *two sheperdesses* Cara Tekatch
Mopsa Janine Payne

Shepherds
Jamie Binkley John Murphy
Roland Brand Peter Shaver
Alan Brodie Bryson Young

Shepherdesses
Barb Cormac
Gillian Dew
Allison Saunders

Scene: Partly in Sicilia and partly in Bohemia

There will be one 15 minute intermission

PRODUCTION

Technical Director Ian Pratt
Properties Mistress Sherry Darcus Milne
Costume Supervisor Rosemarie Heselton
Set Construction . . . Robert Eberle, Don Griffiths, John Henrickson
Cutters Charlotte Burke, Jean Driscoll-Bell
First Hand Leslie White
Seamstresses . . . Lori Kenney, Caferina Ofreneo, Kathleen Wright
Milliner and Costume Accessories Pearl Bellesen
Properties Assistant Kairiin Bright
Jewellery Brian H. Jackson, Blanka Jurenka
Beards and Wigs Ken Allan

Stage Manager Cynthia Burtinshaw
Lighting Execution Bonnie Beecher
Assistant Stage Managers Alan Brodie, Heather Kent
Set Design Assistant J. Cricket Price
Lighting Design Assistant Elana Honcharuk
Sound Operator Randall C. Plitt

House Manager Rhiannon A. Charles
Box Office Michael Fera, Carol Fisher, Linda Humphries
Business Manager Marjorie Fordham
Production Norman Young

Acknowledgements

Inner City Recording Studio

Studio Musicians:
Fred Cory, Stephen Fearing
Earle Peach, Karen Oliver

Studio Engineer:
Sid Perez

As you like them

Shakespeare on video

As You Like It
Hamlet
Henry V
King Lear
Julius Caesar
MacBeth
Midsummer Night's Dream
Othello
Richard III
Romeo & Juliet
Taming of the Shrew

at Vancouver's
SPECIALTY video store

•VIDEOMATICA•

SALES

RENTALS

1829 West 4th Ave.
at Burrard 734-0411

Café
MADELEINE

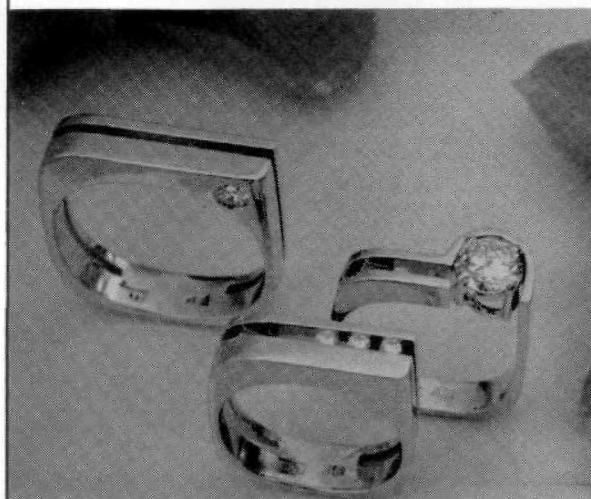
Licenced Bistro

Open daily

A place of
culinary comfort,
serving breakfast,
lunch and dinner.

A Place to Remember
3763 West 10th Ave.
224-5558

CATBALUE



Goldsmith

3619 w 4th Ave

ACTORS!

**8x10 B + W PHOTOS
ONLY \$1.20 EACH!**

(MINIMUM ORDER 50 PRINTS)

5 FREE 8x10's!

(WITH MINIMUM ORDER PLUS THIS AD)



ACTION REPROGRAPHICS

2166 W. 4th AVE., VANCOUVER, B.C.

731-6313



*Western
Canada's
Largest
Bookstore*



All your book needs in seven bookshops under one roof!

- Professional
- Leisure Reading
- Arts & Humanities
- Language & Literature
- Social & Behavioral Sciences
- Science & Engineering
- Health Sciences

Also open Wednesday evening and Saturday.



UBC BOOKSTORE

6200 University Boulevard
228-4741

Quality

(kwal•e•tee) n.

1. the degree of excellence of a thing
2. superiority
3. higher in order; status; etc.
4. above average
5. Kinko's

kinko's

Great copies. Great people.

5706 University
Boulevard
Located In The
University
Village
Telephone
(604) 222-1688

Is It Possible To Have An Oil Painting Which Doesn't Fade In Sunlight ? Yes!



1. The Old Holland Painting Masters used these colours. For example; Rubens, Vermeer, Van Gogh etc.
2. All 75 colours absolutely permanent. Only factory in the World.
3. All 75 colours made on stone equipment.
4. In the U.S. they say our colours are the King of oil colours.
5. Restoration work has been done to famous paintings in museums in Paris, Moscow, New York, and Amsterdam with Old Holland Oil Colours.
6. Fillers like chalk and aluminum hydrate are never used in Old Holland Oil Colours.
7. Only stable lead tubes with a tin cover are used, that saves the paint in the tubes for over 100 years.
8. More and far better results for the consumer or artist, because there are no fillers which means;
 - a. more covering power
 - b. more colour power
 - c. incredible colour intensity.
9. Since 1664. The oldest factory in the world and the process of manufacturing is still controlled by artists
10. Colours are more expensive but cheaper in use, because of the high concentration of Scheveningen pigments- and no fillers!
11. Queen Wilhelmina and Queen Juliana of Holland always used these colours.
12. In the World-famous Amsterdam State Academy all lessons are given with Old Holland Oil Colours.
13. Old Holland Oil Colours are still made as in the 16th Century
14. Every tube is its own colour card, because of the hand-painted strip on the outside of every tube. The colour indication does not change, like printed colour tubes do.
15. After making the paint on stone equipment, the paint can only be filled by hand into the tube and not as with industrial colours, by machine because the paste is very sticky.
16. Stone equipment gives no change to the pigments, metal equipment goes fast and gives change of colour in the pigment, especially earth colours. We use only stone equipment.
17. Old Holland colours are less transparent, because they are not combined with fillers. Fillers give the possibility to produce quick cheap paint, but the colour is not as strong as Old Holland Colours.
18. This quality can not be compared with other products with fillers.
19. Cold Pressed linseed oil is taken from only the first pressing. (just like the finest wines produced from grapes.)
20. Colours without cheap fillers weigh a lot more in your hand (not to mention the scale) than industrial made modern oil colours with fillers.

100% Lightfast

"Oudt Hollandse Olieverwen Makerij Sinds 1664"

The Gifted Canadian Artist Can Now Also Experience The Ultimate In Artist's Oil Colours, That Will Enrich Their Art Beyond What They Do Believe To Be Possible.

OILS * EGGTEMPERA * WATERCOLOUR * LIQUIDS * ARTS & CRAFTS Supplies

#115-20575 Hwy. 10 (Langley Bypass)
Langley British Columbia, Canada
MON - SAT 9-5, Phone (604) 534-4044



ASK FOR FREE CATALOG AND SHADECARD DEALER ENQUIRIES WELCOME



PANACHE

Indulge yourself or satisfy your gift giving needs with a visit to Panache. An extraordinary array of unique and quality merchandise from stemware, china and imported handblown vases to decorations for home or office. Panache also specializes in exquisite 'pure' silver jewellery personally handcrafted by Erich Grill and available in a variety of designs. If gold or precious stones and pearls are your preference, Panache has a setting to suit every taste. You needn't look further than **Panache** at 4475 West 10th, 224-2514.

*Kozma
Fashions Ltd.*

EXCLUSIVE IMPORTED and
CUSTOM MADE GOWNS



4419 West 10th Avenue
Vancouver, B.C.
Phone: 228-8133



Photographs: Stuart Dee

Before and After the Show...



At the University Golf Club, we thought the "neighbourly" thing to do would be to share our sparkling new dining facilities with theatre-goers.

Come to the University Golf Club for dinner *before* the show...and with your theatre tickets you'll receive a 10% discount on dinner!

Then, *after* the show, drop by for coffee and dessert.

We're just minutes away and there's plenty of free parking.

It's the "neighbourly" thing to do...

Reservations 224-7513



5185 University Boulevard