



HENRY'S NURSERIES

3010 Westminster Road.
 100,000 Bulbs to arrive soon from Holland France and Japan.
 THOUSANDS OF FRUIT AND ORNAMENTAL TREES.
 Rhododendrons, Roses, Greenhouse and Hardy Plants for Fall Planting.
 Home Grown and Imported Garden, Field and Flower Seeds. Always in stock in season.
 FERTILISERS—BEE HIVES & SUPPLIES.
 Green house full of Plants, Cut Flowers, Floral Work. Buy direct and secure agent's commission.
 Catalogue free, or call and examine stock.
M. J. HENRY,
 Vancouver, B.C.



World's Fair Excursion Rates

Nelson Slovan City Nakusp
 Rosebery New Denver
 TO
 St. Louis \$60 Chicago \$65
 Toronto \$87.35 Montreal \$98
 Halifax \$121.80
 New York \$101

Three Month's Limit.

DATES OF SALE.
 June 7, 16, 17, and 18.
 July 1, 2, and 3
 August 8, 9, and 10.
 September 5, 6, and 7.

Low Excursion Fares

For all eastern points will also be quoted going via Port Arthur all rail or lake route, returning same or via Chicago and St. Louis.

For full particulars apply to local agents
 J. S. CARTER E. J. COYLE
 D. P. A., Nelson. D. G. P. A., Vancouver

Wanted Immediately

Agents To sell Fruit Trees, Raspberry, Gooseberry and Currant bushes etc. Good pay weekly; 0 int free. There is big money in this work for trustworthy men.
Over 600 acres. We have under cultivation, over 600 acres of Nursery Stock including the choicest and best varieties for Orchard and garden planting. We will deliver goods to customers in good condition, freight paid. Our agents have every advantage that this line of business can offer them. Apply now for terms.

Pelham Nursery Co.,
 TORONTO, ONTARIO.

27 Will make arrangements for local agency or the handling of exclusive territories.

SMOKE ::

MAINLAND and BRITISH LION CIGARS ~ The air of B.C. is perfumed by their aroma ~ ~ ~

Always have a bottle of Sandon beer in your pocket when you go fishing. Write to the New York Brewery and get a case.

Every foot in this country needs a boot or shoe. The Royal Shoe Store, on Baker street, in Nelson, can furnish any kind of footwear that is required.

The Ledge in Nelson.

THE LEDGE after a continuous publication amid the scenery of the silvery Slovan for 565 weeks has pulled its freight to the metropolis of Kootenay where it will be published until its editor pushes clouds with the angels, or the sheriff breaks in the door and makes a wreck of our beautiful plant, bulldog included. After this week THE LEDGE will be published every Monday morning, and will contain, in addition to its other attractions, all the latest news obtainable by wire up to the hour of going to press. The circulation is limited to a million, so it will be necessary to send in your names early, with a cash attachment of \$2. A limited space will be devoted to advertisements, and those who wish to use its columns for the purpose of securing greater commercial publicity should hand in their copy early. No patent medicine or fake ads wanted. A chute-of-job-printing will be worked at all times for the benefit of the public and the financier. Do not wait for an introduction. Bring your work and introduce yourselves. Since THE LEDGE first flung its banner to the breeze it has been quoted more than any other Canadian paper, and while it lives the name of Nelson and Kootenay will be spoken by millions of people in all parts of the earth. Our office is on Baker Street, next to a fine saloon, near two banks, and butts into an undertaking establishment, with a church just around the corner. With all these advantages we should do well and bury our dead with neatness and despatch. Come with your ads, and remember the great excitement commences at the dawn of August 15.

R. T. LOWERY, Editor & Financier.

NOTICE.

THIRTY DAYS after date We intend to apply to the Chief Commissioner of Lands and Works, at Victoria, for a special licence to cut and carry away timber from the following tracts of land.

FIRST LOCATION.

Commencing at a post planted on the East bank of the second west fork of Wilson creek, in the West Kootenay district, about 6 miles from the mouth of the stream, marked M. H. K. S. E. C., thence west to chains thence north 100 chains, thence east 40 chains, thence south 100 chains to point of commencement.

M. H. KENNEY.

Located the 28th day of July, 1904.

SECOND LOCATION.

Commencing at a post planted on the East bank of Wilson creek, in the West Kootenay District, about 7 1/2 miles above the falls, marked J. B. N. E. C., thence south 100 chains, thence west 40 chains, thence north 100 chains, thence east 40 chains to point of commencement.

J. BUTLER.

Located the 28th day of July, 1904.

Nelson Fair

Second Annual Exhibition of the Nelson Agricultural and Industrial Association

September 28-29

NEW BUILDINGS
 FINE GROUNDS
 BIG PREMIUM LIST

Novel Open Air Attractions

Write for Prize List.

J. E. Annable, Sec., Nelson, B.C.

**F. H. HAWKINS
 ASSAYER**

P. O. BOX 185
 TELEPHONE 22 **SANDON**

FRANK FLETCHER

Provincial Land Surveyor

Lands and Mineral Claims Surveyed and Crown Granted.
 P. O. Box 503. Office: Kootenay St., Nelson

P. BURNS & CO.

Have fresh meat every day at Sandon, and in all the shops operated by them in British Columbia. No contract too large for this firm. Armies and railroads supplied on short notice.

Hotel Strathcona

Is in a delightful location and from its balconies can be seen all the beauty of the grand scenery that surrounds, hems in, and adorns the busy city of Nelson. It is the home of tourists and business men from all parts of the world. The cuisine never drags in the mire of mediocrity, and every room is an enemy to insomnia. If you need rooms when on the way in, touch the wire and the deed is done.

B. Tomkins, Manager, Nelson, B.C.

The Kootenay Saloon in Sandon is never snowslidged by cheap beer, or whiskey that has lost its vigor.

Stop at the Queen's Hotel when in Trout Lake City.

Masterton, Griffith & Co., Trout Lake, have all the supplies needed by lumber camps and mines.

**WADDS BROS
 PHOTOGRAPHERS
 VANCOUVER AND NELSON, B. C.**

EMPLOYERS' LIABILITY INSURANCE

IS WRITTEN BY THE
MARYLAND CASUALTY COMPANY

AT LOWER RATES
than by any other Liability Company in B.C.

For Particulars Write—

McDermid & McHardy, Agents for East and West Kootenay
NELSON, B.C.

Jewellery Repairing

We are specially fitted up to do all kinds of repairing. Look into your jewel cases, you may have a good brooch which only needs a pin, or a ring which needs a stone reset. We may use the old setting or reset anew. If stones are missing we will furnish new ones at a very low price. We want your repairs as we are sure to please you in doing the work. Do not neglect your diamond setting, it is perhaps time you had it reset; this is our special work and we guarantee satisfaction and safety. On receipt of a postal card we will mail you a wooden box to insure safety in transportation.

Patenaude Bros., Manufacturing Jewellers Nelson

Tourists

If you are looking for Fishing, Bathing, Hunting, Boating or Glacier Climbing, go to New Denver and stop a few days, weeks or months at the Newmarket Hotel with Henry Stege. Home cooking, and the finest beverages in the world, including water. Write or wire for rates.

Henry Stege • • Newmarket Hotel • • New Denver

T.G. Procter & Co.

Insurance
Real Estate
and
Mining Agents

Ranches and City Properties For Sale

OUTLET HOTEL, PROCTER,
(18 Miles From Nelson)
ON KOOTENAY LAKE.
A COOL PLACE FOR A HOT DAY

Family parties can be supplied with fresh milk, butter, eggs, etc., from the Home Ranch. Reduced Rates by the week. Apply to

T.G. PROCTER, or THE MANAGER
Nelson Outlet Hotel Procter

The Hotel Sandon

Is one of the Hotels in these mountains where the stranger feels at home. The landlord has a smile for every guest, and the creature comforts of the Hotel are unsurpassed in the Silver City. The meals are free from lead, the beds from bugs, while the fluids on the bar produce a reasonable amount of exhilaration without a disastrous result in the morning.

W. George Clarke Sandon.

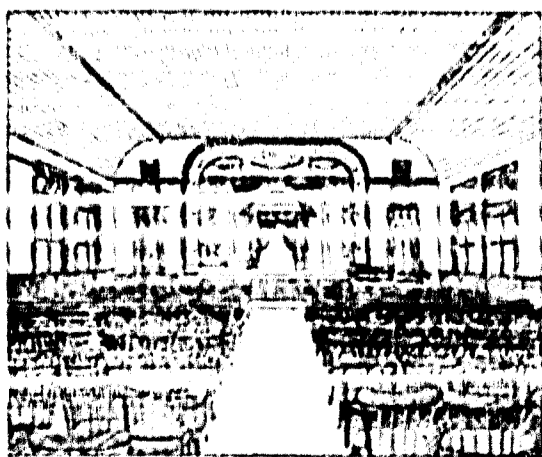
Job Printing

That assays high in artistic merit, quickly done at New Denver's printing emporium—

Address THE LEDGE

THE COMMERCIAL HOTEL - - LARDO

Is the home of all Sloecan people traveling to and from Poplar. MEALS ALWAYS READY. **McLACHLAN BROS.,** Props.



THE AUDITORIUM

Of the Miner's Union Block

Is the only hall in the city suitable for Theatrical Performances, Concerts, Races and other public entertainments.

For bookings, write or wire—

ANTHONY SHILLAND
Secretary Sandon Miners' Union
SANDON, B. C.

Interior view. Seating capacity 350. Modern stage appliances; furnace heated throughout; population to draw from, 1500.

"MY VALET" SQUIRE

THE TAILOR

Over Wallace-Miller block, Baker St., Nelson. Special yearly contracts for Pressing, Repairing and Cleaning. Goods called for and delivered weekly. Tents and awnings made to order.

ATLANTIC

Steamship Tickets

To and from European points via Canadian and American lines. Apply for sailing dates, rates, tickets and full information to any C. P. Ry. agent or—

G. B. GARRETT,
C. P. R. Agent, New Denver.
W. P. F. Cummins, G. S. S. Agent, Winnipeg.

A SHAVE,
SHAMPOO
OR BATH
ALWAYS READY AT

CHARLEY GALE'S SANDON

SMOKE

Blue Prize, Henry Vaue,
Columbus and Havana
Whip Cigars. Union
Goods, made by

W. P. KILBOURNE & CO.
Winnipeg, Man.

Represented by **GEORGE HORTON.**

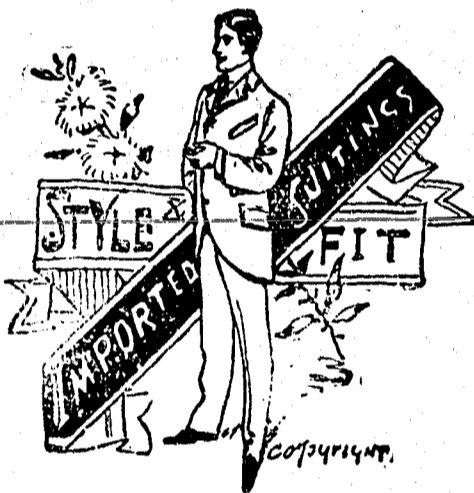
THE HOTEL SLOCAN

Is the Leading Hotel of

THREE FORKS.

—DRINKS ALWAYS READY—

HUGH NIVEN, Proprietor



Order your Summer Suit now. Natty Suitings now arriving.

F. F. Liebscher,
Silverton's Boss Tailor

GET YOUR SHOES FOR MOUNTAIN CLIMBING.

FROM **PURLEY WARD, SANDON**

J. R. Cameron

Is the tailor to go to when you want a summer

Suit of Clothes

He has the noblest suitings to select from, and the fit and workmanship is the best.

SANDON, • OLDEST TAILOR IN THE SLOCAN

Grand Hotel

IN POPLAR, is the home for all Sloecan people visiting the great gold camp. Farty meals, fine liquors and soft beds make it a pleasant home for travellers.

Jacobson & Anderson, Props.

SANDON CHOP HOUSE.

Meals at all hours.

Manila and Kamloops Cigars for sale.

W. H. McINTYRE

\$1 Twelve Jack numbers of Lowery's Claim all different, and a copy of Flat sent to any address, postage. Address: R.T. Lowery, New Denver, B.C.

Filbert Hotel

BENNETT & MURPHY, Proprietors

The Filbert is now the best hotel in the Slocan. The Dining Room is conducted on strictly first-class principles. The rooms are large, comfortable and properly taken care of.

ELECTRIC LIGHT, HOT AIR, MODERN PLUMBING. EVERYTHING UP-TO-DATE.

We Set the Best Meal in Sandon

Meals 50c. Tickets \$7. Main St., Sandon.

THE CANADIAN BANK OF COMMERCE

With which is Amalgamated
THE BANK OF BRITISH COLUMBIA.

HEAD OFFICE—TORONTO

Paid up Capital, \$8,700,000. Reserve Fund, \$3,000,000.

Aggregate Resources Exceeding \$83,000,000.

HON. GEO. A. COX, President. B. E. WALKER, General Manager.

SAVINGS BANK DEPARTMENT Deposits Received and Interest Allowed
NELSON BRANCH. **BRUCE HEATHCOTE, Manager.**

The PARK HOTEL

On the road leading to Ferguson and Trout Lake has ample accommodation for man and his horse. The bacon, beans, beef-steak, eggs, oats, hay, boozine and cigars cannot be beaten in the hills of the Lardeau.

KENNY MORRISON, Prop.

OUR STOCK OF

DRY GOODS

Is the largest in the Slocan. Ladies out town should write for samples or prices.

W. R. MEGAW, SANDON B.C.

JOHN OGDEN ASSAY CO.

Gold, Silver, Copper or Lead, \$1.00 each
Any two, \$1.50; any three, \$2.00.

Samples by mail receive prompt attention; Placer Gold, Retorts and Rich Ores bought.

1725 Arapahoe St., Denver, Colo.

KOOTENAY ENGINEERING WORKS

FOUNDERS & MACHINISTS,
—NELSON, B.C.—

Mill and Mining Machinery. Complete Stock of Shafting, Fittings, etc., always on hand. Estimates furnished. Scrap Iron bought by the carload. Repairing and Jobbing.

B. C. TRAVIS, MANAGER

TO DRY PEOPLE

The Exchange Hotel in Kaslo is like an oasis in an Egyptian desert. Slocan folks flock to it like bees to a flower garden.

ALLEN & PALMER DISPENSERS

KOOTENAY RAILWAY & NAVIGATION COMPANY, LIMITED.

OPERATING INTERNATIONAL NAVIGATION & TRADING COMPANY LIMITED
KASLO & SLOCAN RAILWAY.

K. & S. Ry.

By 8:30 a.m.—Sandon—Ar 4:25 p.m.
By 11:30 a.m.—Kaslo—Ar 2:00 p.m.

Steamer Kaslo.

By 1:30 p.m.—Kaslo—Ar 11:00 a.m.
Ar 1:30 p.m.—Nelson—Ar 8:00 a.m.

Through all parts of the United States and Canada, via Great Northern and O. R. & N. Company's lines.

For further particulars call on or address **ROBERT IRVING, Manager, Kaslo.**

WATCHES.

J. G. MELVIN, Manufacturing Jeweller. Expert Watch Repairer, Diamond Setter, and Engraver. Manufactures Chains, Lockets and Rings. Workmanship guaranteed equal to any in Canada. Orders by mail solicited. Box 40, Sandon.

HOTELS.

THE KING'S HOTEL in Ferguson is a cheerful home for all travelers to the Lardeau. Sample Rooms **P. ANK BARBER, Proprietor.**

PREMONT HOUSE, NELSON European and American plan. Meals, 25 cents. Rooms from 25c up to \$1. Only white help employed. Nothing yellow about the place except the gold in the safe. **MALONE & TREGILLUS.**

BARTLETT HOUSE, formerly the Clark is the best 1 day hotel in Nelson. Only white help employed. **G. W. BARTLETT, Proprietor.**

THE HOTEL FERGUSON is the home of Slocan people when they are in Ferguson. **MCDONNELL & BLACK, Proprietors.**

THE BRITANNIA HOTEL is the oldest and the best in the Lardeau. Gold seekers always welcome. **ULVIN BROS.**

Wholesale Merchants.

STARKEY & CO., WHOLESALE DEALERS in Butter, Eggs, Cheese, Produce and Fruit, Nelson, B. C.

E. FERGUSON & CO., Nelson, B.C. Wholesale dealers in Wines, Liquors and cigars. Agents for Falst beer.

DENTISTRY.

DR. MULLOY, ROSSLAND, B. C. Has had 17 years experience in dental work, and makes a specialty of Gold Bridge Work. Visit made to the Slocan regularly.

General Store.

J. T. KELLY, THREE FORKS, dealer in Groceries, Dry Goods, Etc.

SECRET SOCIETIES

SILVER CITY LODGE NO. 39, I.O.O.F., Sandon, B.C. Meets in the Union Hall every Friday evening at 7:30. Visiting brethren cordially invited to attend. **J. E. LOVERING,** Noble Grand; **A. L. CRAIG,** Vice Grand; **W. J. GARRETT,** Secretary.

SANDON LODGE NO. 24, K. OF P. Meets every Wednesday evening at 8 o'clock in the Pythian Castle Hall, Sandon. Sojourning brethren will receive a friendly welcome. **S. ISAACSON, C.C.; ALFRED J. HALL, K. R. & S.**

SURVEYOR.

JOHN McLATCHIE, Dominion and Provincial Land Surveyor. Nelson, B. C.

A. R. HEYLAND, Engineer and Provincial Land Surveyor. KASLO.

SANITARIUM.

HALYCON HOT SPRINGS The Sanitarium at Halycon is situated amid scenery that rivals even the Lucerne. It is well known as a health and pleasure resort. The large hotel contains plunge, Turkish, steam and shower baths. Thousands have been cured of rheumatism, catarrh and neuralgia. Its waters heal all liver, kidney and stomach ailments. A sure cure for lead poisoning. Two mails daily and telegraphic communication.

MANAGER WANTED.

Trustworthy, bold or gentleman to manage business in this county and adjoining territory for W. B. and favorably known house of solid financial standing. \$2.00 straight cash salary and expenses paid each Monday by check direct from headquarters. Excellent money advanced. Position permanent. Address, Manager, Box 100, H. C., Chicago, Illinois.

THE NUGGET

Is a weekly paper published at **POPLAR, B. C.** It gives all the news of that great gold camp. It costs \$2 a year to any address. Send your money to—

THE NUGGET

POPLAR, B. C.