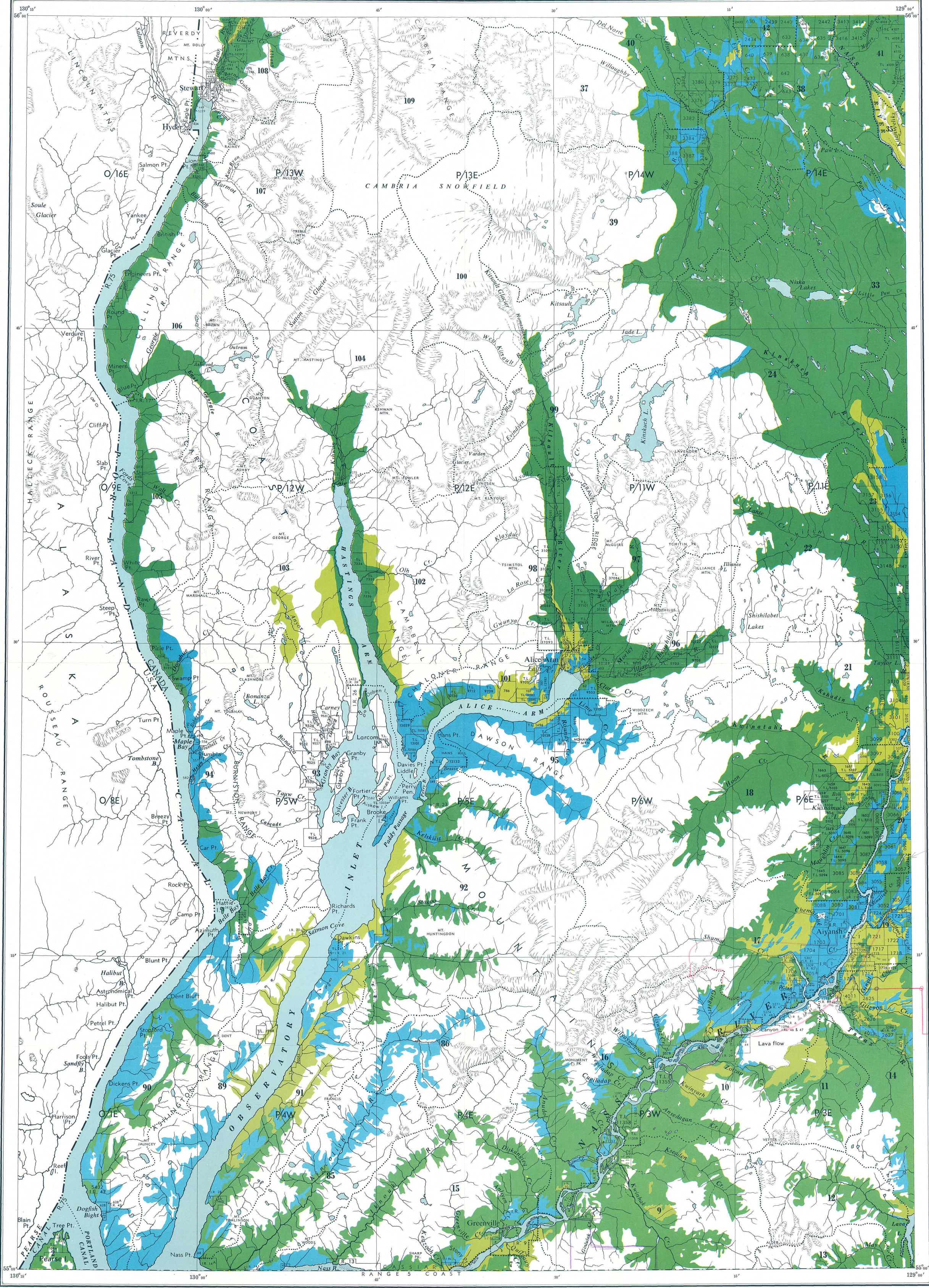


INTERIM FOREST COVER SERIES



FOREST INVENTORY SUMMARIES - BRITISH COLUMBIA

NUMBER 82

INDEX MAP 103 O/NE O/SE P/NW P/SW

These summaries of area and volumes are based on the initial forest inventory of British Columbia. Area figures were obtained by the classification of areas on aerial photographs in the field, plotting of this information to base maps at a Scale of 1/2 mile to 1 inch, and planimetering the resulting forest cover maps. Volumes were obtained from samples established in Forest Inventory Zone(s) 1 & 3. The enclosed forest cover index map is a composite reduction of sixteen 1/2 mile to 1 inch forest cover maps on which forest strata have been collected into very broad classes. The entire series comprising 149 index maps and summaries, covering the Province, are being distributed in 1958. File all summaries, as received, to obtain complete set.

AREA CLASSIFICATION BY OWNERSHIP (In Acres)

	Crown Grant	Crown	Licences & Leases	Canada Control	All Ownerships
Mature Timber-----	820	472319	3565	11572	488276 ✓
Immature Timber-----	880	55592		10160	66632
Not satisfactorily restocked areas-----		50		583	633
Non-commercial stands-----	620	87941	425	3444	92430
Non-productive forests and non-forested lands-----					1097356
Water-----					29131
Swamp-----					5039
Total-----	2320	615902	3990	25759	1779497

VOLUMES BY SPECIES AND DIAMETER LIMIT (In thousands of cubic-feet to a "Close" - 1-foot stump, 4-inch top - standard of utilization, gross volumes reduced for decay loss.)

	4 to 9 Inches d.b.h.			10 Inches d.b.h. and over			4 Inches d.b.h. and over		
	Immature	Mature	Total	Immature	Mature	Total	Immature	Mature	Total
Douglas Fir-----									
W. Red Cedar-----	7919	10710	18629	23854	319512 ^{Vol.} 654 _{Ac.} cf	343366	31773	330222	361995
W. Hemlock-----	46242	128196	174438	80387	1549936 _{3,174}	1630323	126629	1678132	1804761
True Firs-----	4090	68123	72213	15402	515514 _{1,056}	530916	19492	583637	603129
Spruces-----	8323	8489	16812	48485	487451 ₉₉₈	535936	56808	495940	552748
Yellow Cedar-----	40	3489	3529		36967 ₇₆	36967	40	40456	40496
White Pine-----									
Lodgepole Pine-----	13223	13623	26846	22174	97931 ₂₀₀	120105	35397	111554	146951
Yellow Pine-----									
Larch-----									
Cottonwood-----		275	275	5380	46421	51801	5380	46696	52076
Alder-----	2616	1350	3966	12759	6623	19382	15375	7973	23348
Maple-----									
Birch-----	2134	1608	3742	779	8616	9395	2913	10224	13137
Aspen-----	206	1115	1321	900	4771	5671	1106	5886	6992
Total-----	84793	236978	321771	210120	3073742	3283862	294913	3310720	3605633