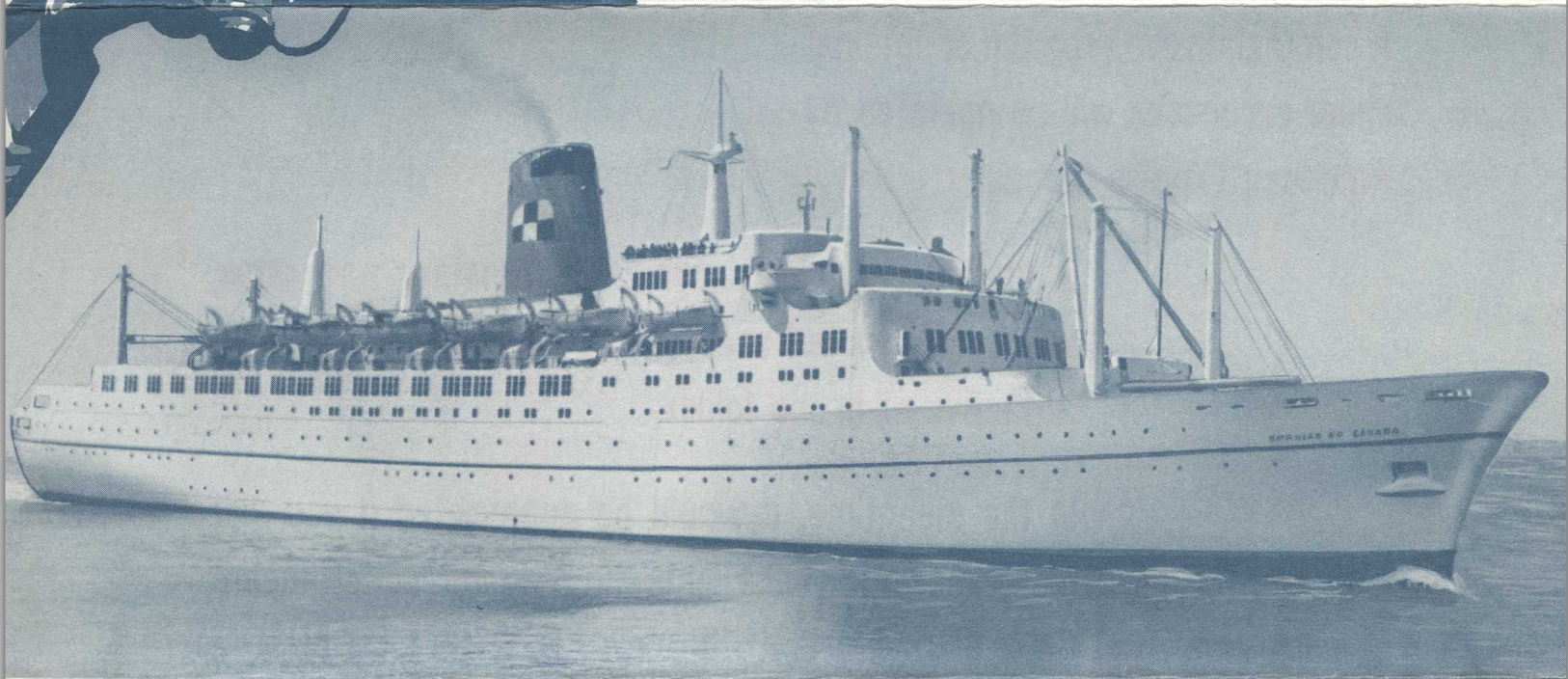


C.P. Corporate Archives
Montreal Jun. 3, 1983



Our Appreciation to You...our Agents



Empress of Canada 27,300 Tons Gross Register
Stabilized ... Air Conditioned

We are proud to announce that our new
EMPRESS OF CANADA sailed on her Mediterranean-
Greek Isles Cruise from New York on
February 9th, 1962, with a full complement of
passengers — and to you, our valued agents,
who contributed so much to this outstanding
success, we would like to extend our sincere thanks.

To those patrons of yours who were disappointed because they could not join this Cruise, due to circumstances beyond their control, or for whom we were unable to offer the desired accommodation, we are happy to announce that the EMPRESS OF CANADA will again make a 61-days Mediterranean-Greek Isles Cruise — sailing from New York on February 18th, 1963. The new itinerary will follow the same general pattern as the 1962 Cruise.

A comprehensive program of optional shore excursions will be operated by American Express Company.

A preliminary folder, giving the itinerary and rates, will be distributed shortly, to be followed later by an attractive all-in-one folder.

In the meantime, it would be appreciated if you will make known to your clients the Second Mediterranean-Greek Isles Cruise of the new EMPRESS OF CANADA, sailing from New York

61 days - 33 Ports
Rates from \$1675



February 18th, 1963

The berthing plan is now open, so please send along your applications early and give us an opportunity to provide the desired accommodation while a choice of space is still available.

Canadian Pacific

TRAINS • TRUCKS • SHIPS • PLANES • HOTELS • TELECOMMUNICATIONS
WORLD'S MOST COMPLETE TRANSPORTATION SYSTEM