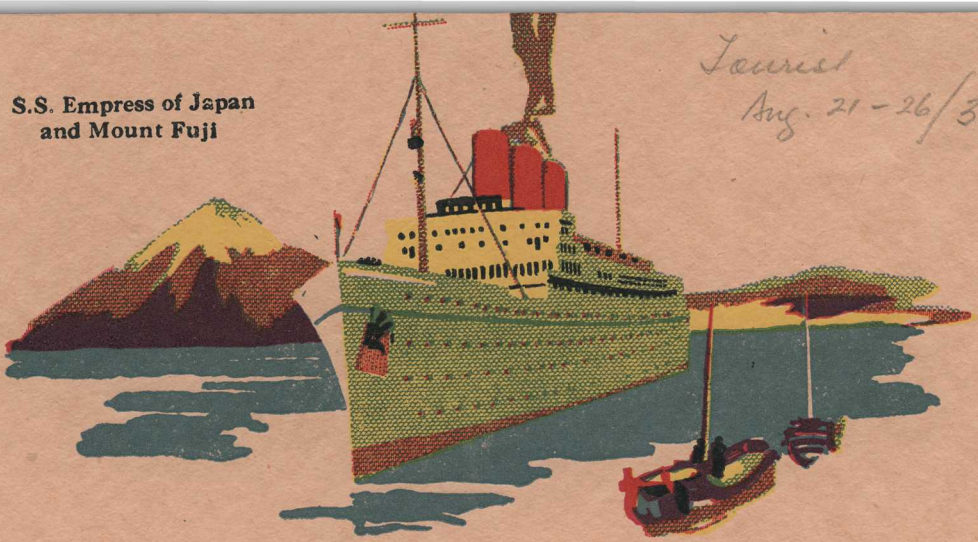


S.S. Empress of Japan  
and Mount Fuji

*Tourist*  
*Aug. 21 - 26/31*



## M E N U

Apples                      Oranges                      Bananas

Compote of Prunes or Raisins

Quaker Rolled Oats                      Creamed Hominy  
Krumbles                                      Pep

Puffed Wheat

Broiled Grimsby Kippers  
Fried Fillets of Fresh Haddock

Eggs : Boiled, Fried, Turned, Scrambled, Poached

Omelettes : Plain, au Lard

Creamed Minced Chicken on Toast

Grilled Smoked Bacon

TO ORDER

Dorset Sausage

COLD

Roast Beef                      Boar's Head                      Corned Ox Tongue

White and Graham Rolls                      Plain or Buttered Toast  
Brown, Raisin and Puffed Bread                      Pumpernickel

Sultana Buns                      Corn Muffins                      Cream Scones

Marmalade                                      Conserves

Glaxo      Nestles Milk Food      Allenbury's Food      Benger's Food

Tea                                      Cocoa                                      Coffee

Empress of Australia  
Tourist

Friday August 21, 1931  
BREAKFAST

# Canadian Pacific