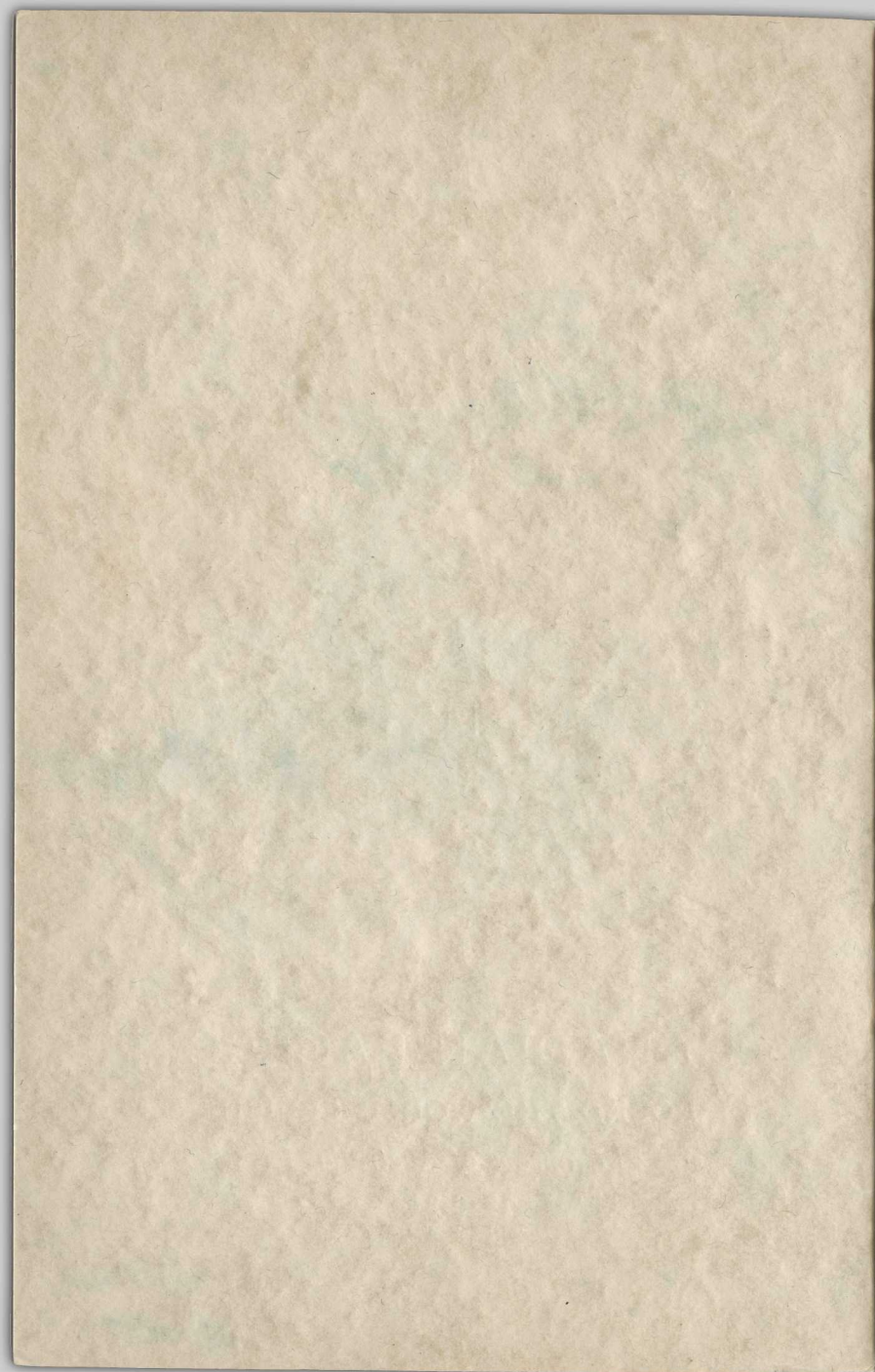
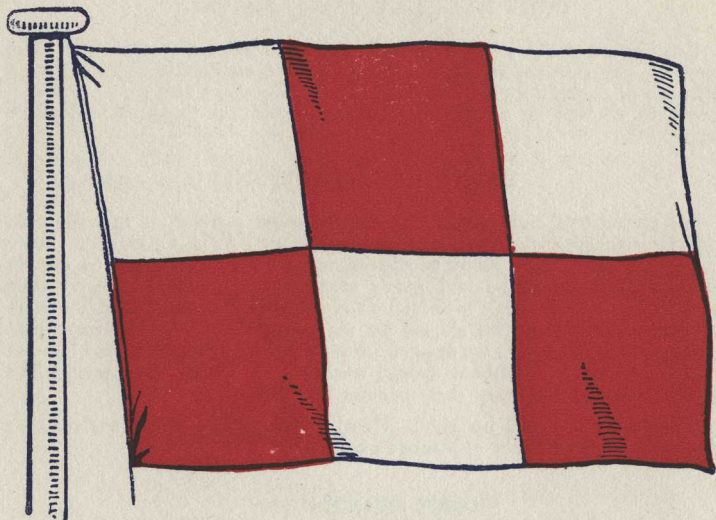


Shore Excursion
at
Manila



CANADIAN PACIFIC
ROUND THE WORLD CRUISE
Empress of Australia
1930-31





HOUSE FLAG OF CANADIAN PACIFIC STEAMSHIPS

Watch for this Flag
on
All Our Conveyances

PLEASE REMEMBER THE NUMBER OF YOUR CONVEYANCE

TEN IMPORTANT POINTS

PORT REGULATIONS—ARRIVAL

- 1 Landing at most ports is prohibited until after the ship has been passed by the Health, Immigration and Police authorities. Due notice will be given regarding attendance of Cruise Members and delay and discomfort to all will be avoided by prompt attention to these important matters.

PARTY REGISTRATION

- 2 On account of sightseeing facilities at most ports it is necessary to divide Cruise Members into separate parties, viz., A, B, C, D, etc. Prior to reaching each port shore programmes will be distributed to enable Members to study shore and party arrangements. It is realized that Members will wish to move with friends and for this reason it is not desirable that allotments to parties should be made by the Cruise Management without giving Members an opportunity to voice their preference for one party or another. Members should decide with whom they would like to go sightseeing and keep their parties together.

Timely advice will be given Members regarding party registration and distribution of party allotment cards.

SHORE EXCURSIONS

- 3 To ensure their own comfort Cruise Members are respectfully requested to adhere to the hour shown for the movement of their party and to **move only with their party.**

DISEMBARKATION

- 4 Members will best study their own comfort and convenience by avoiding crowding in the corridors or at the gangway. Fifteen minutes before the assembly hour for each shore party, a gong will be sounded throughout the ship. Members should remain on deck or other convenient place pending such notification.

MOTOR CARS

- 5 In filling motor cars for shore excursions, the Cruise Management work, wherever possible, on the rule of placing four persons in each seven-seated car and three persons in each five-seated car, in addition to the driver. Cruise Members constituting themselves into small party groups for motor car trips should proceed ashore promptly together when their party is called to give every opportunity of securing the desired space, keeping in view car loading as already stated.

It is respectfully notified that conveyances cannot be held for those arriving late, as the common comfort and convenience of all must be studied by the Management.

The co-operation of Members of the Cruise is earnestly solicited by the Management, looking to the convenience, comfort and pleasure of all concerned.

MANILA

The Capital and largest city of the Philippine Islands is situated on the Western Side of the Island of Luzon, at the mouth of the Pasig River, which practically divides it into two parts and empties into Manila Bay.

The city of Manila was founded by Legaspi on June 24th, 1571. The erection of the fortifications around the present Walled City (Intramuros) was begun about 1590. In 1645, 1863 and 1880 the city suffered considerable damage, through earthquakes.

The first newspaper was published in 1811.

On May 1st, 1898, during the Spanish-American War, an American fleet sailed into Manila Bay and totally destroyed the Spanish fleet. Thereafter Manila was blockaded until August 13th, when a military force having arrived the Americans took possession of the city.

The area of Manila is 13.72 square miles; the population according to the census of 1918 was 285,306. Of this number 259,437 were Filipinos, 17,760 Chinese, 2,916 Americans, 2,050 Spanish, 1,612 Japanese, 664 British, 201 Germans, 121 French, 71 Swiss and the rest of other nationalities. There were 20,379 people to the square mile.

PROGRAMME

First Day.—Wednesday, February 11th, 1931.

The “Empress of Australia” is expected to arrive in Manila and dock at 6.00 a.m., Wednesday, February 11th.

8.30 a.m.

Automobiles will be waiting at Pier 7 to convey guests on a drive through the old Spanish walled City via Fort Santiago, visiting Cathedrals, Colleges, Bureau of Education, thence through a number of principal business streets, shopping and residential districts in Manila, returning to the “Empress of Australia.”

Luncheon on board.

~~1.30~~

~~2.00~~ **p.m.**

Automobiles will be waiting at Pier 7 for drive to Fort McKinley, visiting Guadalupe Ruins (a relic of the Spanish Regime in 1620), returning via Pasay.

4.30 p.m.

Visit to Bilibid Prison to view retreat and visit Industrial Departments, thence to “Empress of Australia.”

Dinner on board.

Evening free for independent action. Suggest visit to Manila Hotel, Santa Anna and Lerma Cabarettes.

Second Day.—Thursday, February 12th, 1931.

8.30 a.m.

Automobiles from Pier 7 to Montalban Gorge, the Source of Water Supply for Manila, passing through picturesque and interesting Barrios and rice growing districts, thence to “Empress of Australia.”

Luncheon on board.

Afternoon free for independent action.

“Empress of Australia”

will sail for

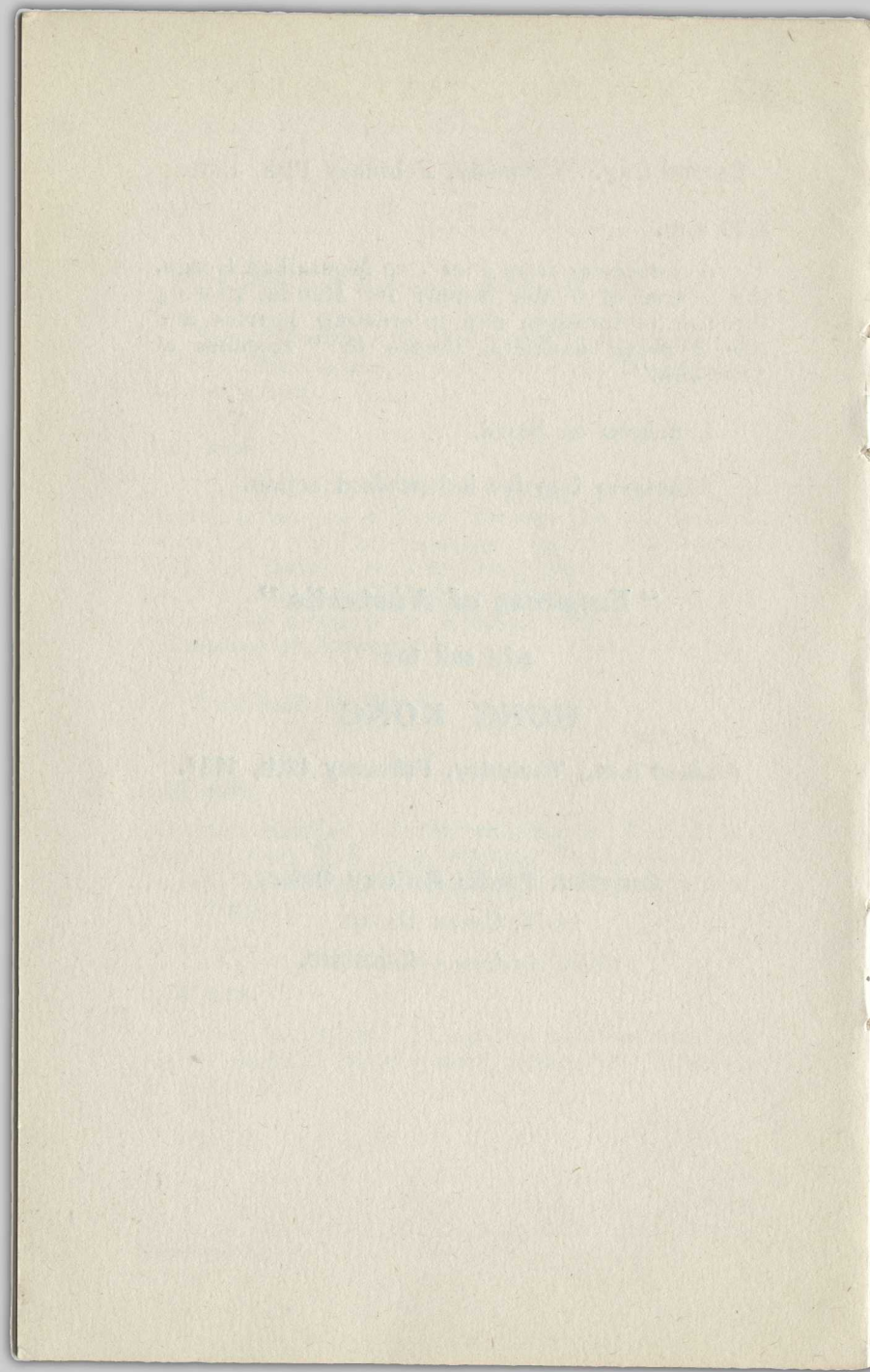
HONG KONG

⁴⁻³⁰
At ~~6.00~~ p.m., Thursday, February 12th, 1931.

Canadian Pacific Railway Office,

14-16, CALLE DAVID.

Cable Address.—**Cacanpac.**



TEN IMPORTANT POINTS

(Continued)

HOTEL ACCOMMODATION

When hotel accommodation ashore is included in tickets due regard will be given, as far as practicable, to Members' requests for one hotel or another, consistent with the amount of accommodation available, but no guarantee can be entered into.

- 6 Attention is drawn to the fact that rooms with bath are **not** included in Cruise fare. The Cruise Office should be given early advice of any special hotel requirements when every effort will be made to secure same, but no guarantee can be entered into thereon.

OPTIONAL SHORE EXCURSIONS

Members holding Exchange Orders issued ashore for Optional Shore Excursions are respectfully requested to turn them in at the Cruise Office promptly when called for, in order that final arrangements may be made in respect of each party.

- 7 As the Optional Excursions are limited in respect to numbers, Members desirous of availing themselves of such, and who have not already purchased orders for them ashore, should enquire at the Cruise Office as to vacancies available.

The Canadian Pacific makes arrangements in advance for the Optional Excursions and Overland Tours and is required to pay for all facilities ordered, therefore no cancellations or alterations may be made in connection with such Excursions and Tours after the books are closed, the date for which will be announced aboard ship.

MEALS ON BOARD

Two sittings will be arranged for meals on board ship, to be served at fixed hours. Necessary alterations in meal hours to conform with shore excursion arrangements will be notified on ship's Bulletin Boards. Where a continuous or running meal is notified, Cruise Members should take any seat available and not wait until their own becomes vacant.

- 8 Regular meal hours on board will be as follows:

	First Sitting	Second Sitting
Breakfast.....	8.00 a.m.	9.00 a.m.
Luncheon.....	12.30 p.m.	1.30 p.m.
Dinner.....	6.15 p.m.	7.30 p.m.

PORT DEPARTURES

Cruise Members are respectfully requested to advise their Room Stewards of their re-embarkation on the ship preparatory to its sailing. Sailing date and departure hour from each port will be conspicuously posted. The ship will sail promptly at the hour advertised to meet tidal or other urgent reasons of operation and the Company cannot accept any responsibility for Members failing to re-join the ship.

9

CRUISE OFFICE

- 10 The Cruise Office will be open daily from 9.00 a.m. to 5.00 p.m. except while the ship is in port, when the Staff is engaged with shore excursion duties.

Firearms are prohibited everywhere.

PLEASE WATCH THE SHIP'S BULLETIN BOARDS FOR ANY ALTERATIONS IN SHORE PROGRAMMES AND FOR OTHER MATTERS ESSENTIAL TO THE COMFORT OF MEMBERS AND GENERAL CONDUCT OF THE CRUISE.

Memoranda

