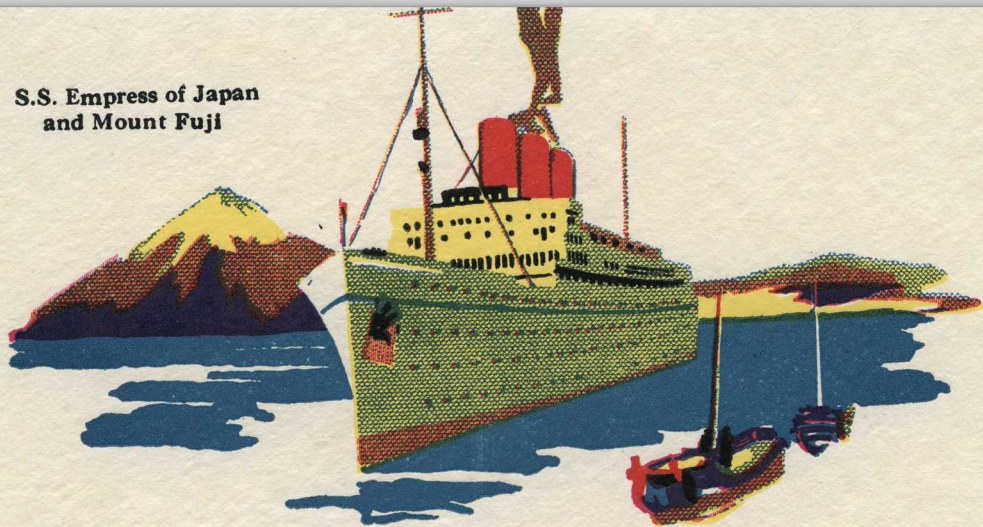


**S.S. Empress of Japan
and Mount Fuji**



M E N U

- 1 Plateau Hors d'Oeuvres, Varies
- 2 Minestrone a l'Italienne 3 Cream Marie Stuart
- 4 Baked Fresh Haddock, Twickenham
Spanish Omelette
- 5 Tomato Rarebit
- 7 Lamb Pot Pie 8 Curried Rarebit a l'Indienne
- 9 Gnochis au Parmesan
- 10 Roast Leg of Pork, Stuffing, Apple Sauce
- 11 Creamed Parsnips 12 Pea Beans au Beurre
- 13 Steamed Rice
- 14 Potatoes: Boiled, Mashed, Baked Jacket
- To Order
- Salisbury Steak, Jardiniere Calf's Liver and Bacon
- Cold Selection
- 15 Salmon Mayonnaise
- 16 Prime Roast Beef 17 Corned Ox Tongue
- 18 Melton Mowbray Pie 19 Leicester Brawn
- 20 Salads: Lettuce, Sliced Beetroots, Potato
- 21 Bread and Butter Pudding
- 22 Deep Blueberry Pie 23 Blueberry Pie a la Mode
- 24 Scotch Cheese Cakes

Cheese

Tea

Buttermilk

Crackers

Coffee

EMPRESS OF JAPAN"

Wednesday, November 2, 1932

Luncheon

Tourist Class

Canadian Pacific

L.O.