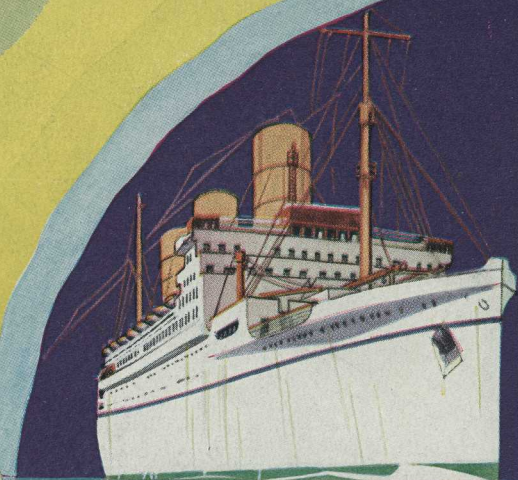
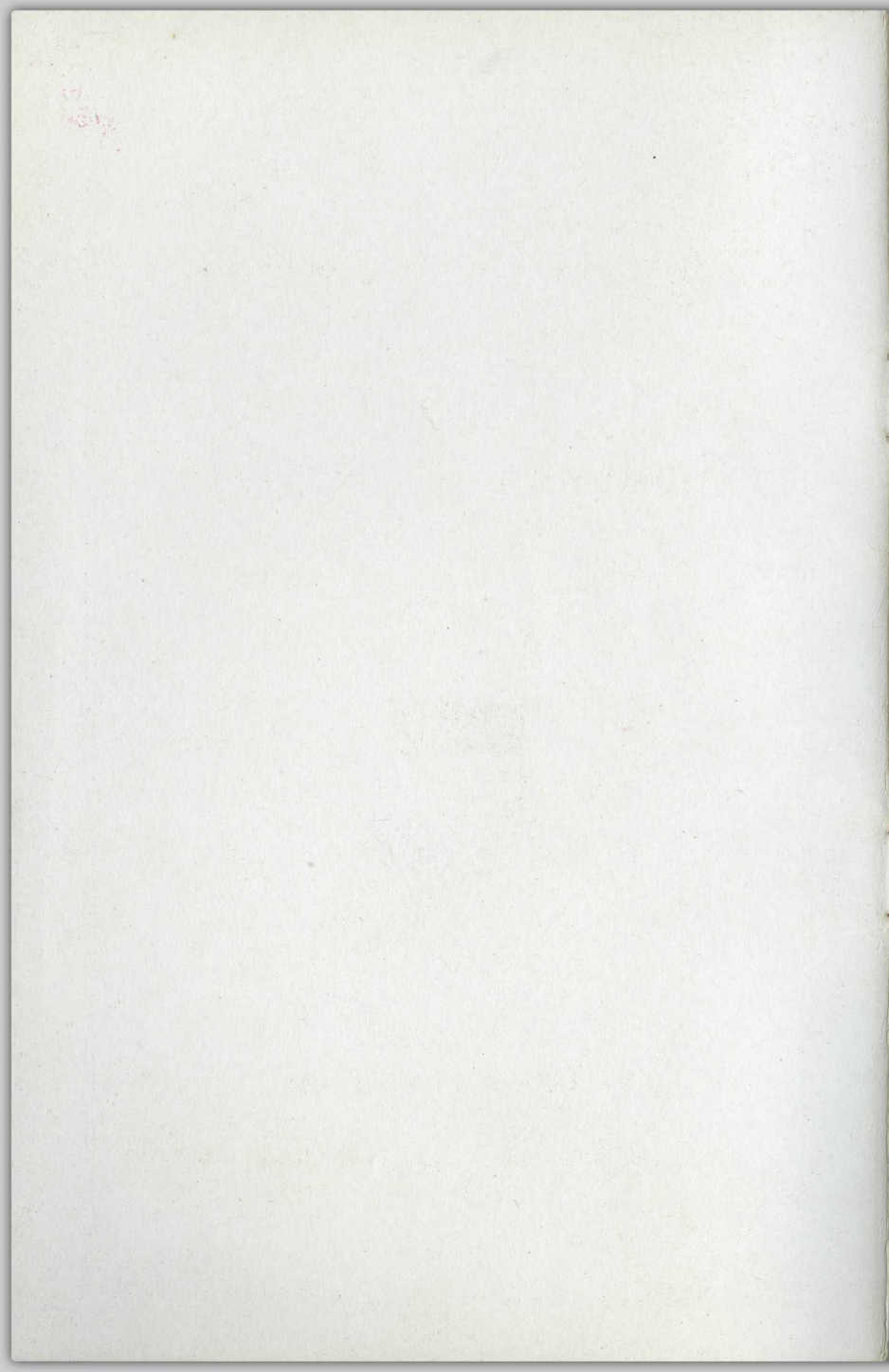


CANADIAN PACIFIC

White Empresses

£/Britain
July 11, 1936





15-

CANADIAN PACIFIC

STEAMSHIP

Empress of Britain

42500 Gross Tons



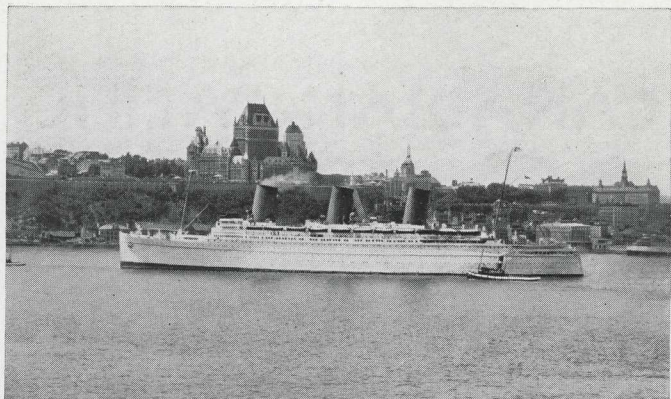
FROM QUEBEC

SATURDAY, JULY 11, 1936

TO

CHERBOURG

SOUTHAMPTON



Empress of Britain at Quebec, with Chateau Frontenac in background

Empress of Britain—World Cruise

From NEW YORK JANUARY 9, 1937

SAILING EASTWARD FOR A COMPLETE CIRCUIT
OF THE GLOBE

30000 MILES 125 DAYS 29 PORTS 22 COUNTRIES

The Voyage of a Lifetime on the Largest World Cruise Liner

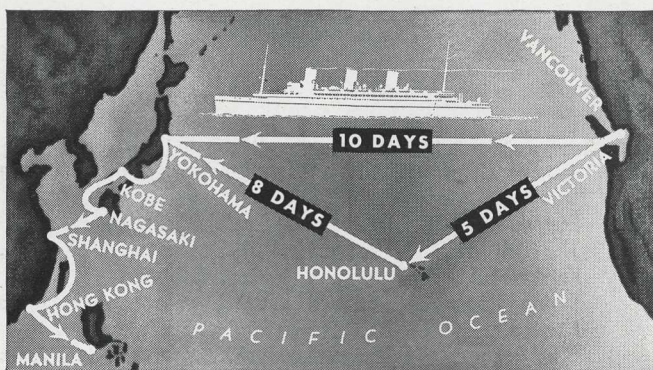
Empress of Britain

42350 Tons Gross Register 760 Feet Long

CHEAPER THAN COMPARABLE LIVING AT HOME

Cruise Fare Includes a Comprehensive Programme of
Sightseeing at all Ports

Details from any Canadian Pacific Agent



Go *Empress* to the Orient



● Until the era of Trans-Pacific air lines, the fastest service to the Orient is by the great white *Empresses*, holders of all records to and from Yokohama.

Only 10 days to Yokohama by *Empress of Asia* or *Empress of Russia* by the Direct Express Route. Just 3 days more via Honolulu by *Empress of Japan* or *Empress of Russia*.

Frequent sailings from Vancouver (trains to ship-side) and Victoria (Canada's Evergreen Playground) to Yokohama, Kobe, Nagasaki, Shanghai, Hong Kong and Manila. From California, meet an *Empress* at Honolulu. Orient fares include passage to and from Seattle. First and Tourist Class. Ask about inclusive-cost tours.

CANADIAN PACIFIC

For Railway, Steamship or Hotel Reservations, address any Canadian Pacific office.

INFORMATION

Information Bureau is at your service

Public Rooms—The Public Rooms are all situated on the Lounge Deck. Commencing from the forward end they are in the following order—

Empress Room	Designed by Sir John Lavery, R.A.
The Mall	Designed by P. A. Staynes and A. H. Jones.
Knickerbocker Bar	Designed by Heath Robinson
Writing Room	Designed by P. A. Staynes and A. H. Jones
Mayfair	Designed by Sir Charles Allom
Card Room	Designed by P. A. Staynes and A. H. Jones
Cathay Lounge	Designed by Edmund Dulac
Salle Jacques Cartier	Designed by Frank Brangwyn, R.A.

and Salles Montcalm and Wolfe are on Deck D amidships, entrance from Main Foyer on port and starboard sides, also from staircase communicating with Swimming Pool, etc.

Meals—Breakfast—Breakfast is served in Dining Saloon from 8.30 am. Passengers should notify Bedroom Steward when they wish to be called and if breakfast desired in their own apartment

Chimes are sounded thirty minutes before dinner

Smoking—For the general convenience of passengers smoking should be confined to the Smoking Room, Lounge and Card Room

Ladies' Hairdressing, Beauty Parlour, Manicure, Chiropody, on Deck A amidships. Scale of charges displayed in each department.

Gentlemen's Hairdressing, Manicure and Chiropody rooms are on Deck B amidships

Laundry—Articles for laundering can be handed to Bedroom Steward. Scale of charges on application

Valuables and Money may be placed in the Purser's safe. Without charge, envelopes are provided which passengers seal and sign. Company assumes no responsibility for loss or damage, however arising

Change of Stateroom—Passengers who desire a transfer of accommodation should apply to the purser who alone is authorized to make changes. If higher graded accommodation is desired the difference in fare must be paid

Chaises de Pont, Couvertures et Coussins (avec couvertures détachées, peuvent être loués à bord pour le voyage

Le Magasin—Le Magasin est situé sur le Pont de Promenade en haut de l'escalier principal. On y vend bijouterie, étoffes, confiserie, pellicules photographiques, etc. On y trouve, en vente ou en location, un grand choix de costumes de carnaval

Le Biblio'hécaire vend des timbres et tient à la disposition des passagers de la papeterie, des formules télégraphiques, des livres de renseignements et des horaires de chemin de fer

Timbres-Postes sont en vente à la boutique du bord, à la bibliothèque et au bureau du commissaire. Sur mer on peut se servir de timbres-poste anglais ou canadiens

Des Livres de toutes sortes sont à la disposition des passagers à la bibliothèque. Les livres perdus doivent être remboursés

Dactylographie—Un Sténo-Dactylographe est à la disposition des passagers. Pour le tarif, s'adresser au Bureau de Renseignements

Le Médecin du Bord est autorisé à percevoir des honoraires raisonnables, sujets à l'approbation du Commandant

Infirmières—Des infirmières diplômées, sous la direction du médecin du bord, se tiennent à la disposition des passagers qui en feraient la demande

Billets de Retour sur l'Atlantique—Le représentant du trafic du chemin de fer préposé aux billets est à même de fournir aux passagers tout renseignements nécessaires sur le mouvement des navires de la Canadian Pacific Steamships. On peut retenir ses places en versant un dépôt

Offices Religieux—Pour les passagers de religion protestante, le service divin est célébré le dimanche matin, à 10h.45. L'heure de la célébration de la sainte messe est affichée au bureau du Commissaire

Change—Le Commissaire est autorisé à faire le change de la monnaie, pour des montants limités

Téléphone par T.S.F.—Le navire est équipé avec l'installation la plus moderne de téléphone par T.S.F. de façon à permettre aux passagers de parler avec presque toutes les parties du monde. S'adresser au bureau du commissaire pour renseignements et tarifs—Pont "B," Escalier Principal

Radiogrammes—Pour renseignements et tarifs s'adresser au bureau du commissaire. Le navire est équipé avec une installation de T.S.F. permettant de communiquer constamment avec l'Europe et l'Amérique pendant tout le voyage. On attire l'attention des passagers sur les tarifs spéciaux à prix réduit pour "lettres câblées" etc.

Mail, Cables and Wireless Telegrams—Passengers are requested to enquire for mail at the Information Bureau

Mail, cables and wireless messages are received at the Information Bureau for despatch. Cablegrams and telegrams should be handed in an hour before arrival at any port of call

None of the ship's employees, other than those on duty in the Information Bureau, are authorized to accept letters, cables and telegrams for despatch while the ship is at sea

Passengers are invited to leave their addresses at the Information Bureau, so that all undelivered mail, telegrams, etc., may be forwarded. Mail matter may be sent in care of any Canadian Pacific office

Lifebelts are in State-Rooms; Bedroom Steward will explain method of attachment

Deck Games—Deck Tennis Courts, Shuffleboard, Quoits, Putting Green and Golf Nets are laid out at the forward end of Sports Deck. Application for any of these games should be made to deck sailor in attendance

Tennis Court—Tennis Court is available for play at any time. The Court is flood-lighted for play after dark. No charge is made for the use of the Court. Tennis Balls may be purchased at The Shop on the Lounge Deck (Main Staircase). Tennis Rackets may be hired at a charge of 25 cents per hour, or purchased outright from The Shop. Passengers using the Court will be limited to one hour, if other passengers are waiting to play

Squash Racquets Court is on Deck B aft. Spectators' Gallery is entered from Deck A. No charge is made for the use of the Court. Balls can be purchased at The Shop. Rackets may be hired at 25 cents per hour, or purchased outright from The Shop. Passengers using the Court will be limited to one hour, if other passengers are waiting to play

Olympian Pool on Deck F approached by after staircase. The Pool is available for use at any time during the day. Bathing costumes may be purchased or hired at the Shop. The hire rates are 50c. per day or \$2.00 per voyage

Turkish Baths—Turkish Baths are adjacent to the Olympian Pool in charge of qualified male and female attendants. The charge is \$1.25. Appointments should be made with the Gymnasium Instructor

Gymnasium—A fully equipped gymnasium is immediately adjacent to the Olympian Pool, with instructor in charge
A Juvenile Gymnasium is also provided

Indoor Games such as Chess, Draughts, Backgammon, Dice and Poker Chips may be had on application to attendant in Mayfair or Cathay Lounge

Photographic Dark Room is available for the development of films and prints. Films may also be handed in at the Shop for developing and printing at the usual charges

Lettres, Câblogrammes et Télégrammes—Les passagers sont priés de réclamer leur courrier au Bureau de Renseignements

Le Bureau de Renseignements s'occupe également de l'expédition des lettres, câblogrammes et télégrammes. Toutes les dépêches doivent y être remises une heure avant l'arrivée du paquebot à un port. Le personnel du Bureau de Renseignements est seul autorisé à accepter lettres, câbles et télégrammes et à se charger de leur transmission, pendant que le paquebot est en mer

Les passagers sont priés de laisser leur adresse au Bureau qui fera suivre le courrier et les dépêches reçues après leur départ. Toute correspondance peut être adressée aux soins d'un des bureaux de la Canadian Pacific

Les Ceintures de Sauvetage se trouvent dans les cabines; le valet de chambre expliquera la manière de les mettre

Jeux de Pont—Les divers jeux de pont, tels que marelle, palet, golf, etc., sont installés à l'extrémité avant du Pont de Sport. S'adresser au mâtelot de pont

Tennis Court—Un Tennis Court est constamment à la disposition des passagers, éclairé à giorno la nuit. L'usage du Tennis Court est gratuit. Des balles de tennis et des raquettes sont en vente au Magasin sur le Pont de Promenade (Escalier Principal). On peut aussi louer des raquettes à 25c. l'heure. Au cas où des passagers attendraient pour jouer, l'usage du Court sera limité à une heure

Squash Racquets Court est sur l'arrière du Pont "B." L'accès de la Galerie des Spectateurs est sur le Pont "A." L'usage du Court est gratuit. Balles et raquettes peuvent être achetées au Magasin. Raquettes en location à 25c. l'heure. Au cas où d'autres passagers attendraient pour jouer, l'usage du Court sera limité à une heure

"Olympian Pool" (la piscine) se trouve sur le Pont "F", entrée par l'escalier arrière. La piscine est ouverte pendant toute la journée. On peut louer ou acheter des costumes de bain au Magasin. Location: 50c. par jour au \$2.00 pour la traversée

Bains Turcs—Les Bains Turcs adjoignent la piscine. Des employés experts en ont la charge. Le tarif est \$1.25. Prendre rendez-vous avec le professeur de gymnastique

Gymnasium—Un gymnasium avec les accessoires les plus modernes, dirigé par un professeur, adjoint la piscine, ainsi qu'un gymnasium pour les enfants

Jeux et Divertissements—On peut se procurer des damiers, échiquiers, trictrac etc., en s'adressant aux garçons du fumoir ou du salon

Une Chambre noire est à la disposition des passagers pour le développement des pellicules photographiques. Les pellicules photographiques seront développées et imprimées, au Magasin, aux prix ordinaires

Deck Chairs, Rugs and Cushions (with loose covers) may be rented on board for the voyage

The Shop—The Shop is situated on the Lounge Deck at head of main staircase. Jewellery, dress goods, confectionery, photographic films, etc., are on sale. A wide range of fancy dress costume is available for sale or hire

Library Steward sells stamps and provides stationery, telegraph forms, books of reference and railway time tables

Stamps—Stamps are on sale in The Shop, Library and Bureau. English and Canadian postage stamps may be used for mail posted at sea

Books of Fiction and Reference are obtainable from the Library. Books lost by passengers must be paid for

Stenographer—An experienced Stenographer is available to undertake work for passengers. Apply to Information Bureau for rates

Surgeon—The Surgeon is authorized to make customary charges for his services, subject to the approval of the Commander

Nurses—The services of trained and qualified Hospital Nurses, under the direction of the Surgeon, may be obtained

Return Atlantic Passage—The Rail Traffic Representative is equipped to furnish full information concerning sailings and bookings on Canadian Pacific Steamships. Reservations should be secured from him and deposits to cover will be received

Divine Service is held on Sundays at 10.45 am

Altars are carried for the religious services of Holy Mass and Holy Communion

Money Exchange—Purser exchanges a limited amount of Currency. Travellers' Cheques cashed and sold at the Purser's office

Wireless Telephone—The ship is fitted with the most modern wireless telephone installation to enable passengers to speak to almost any part of the world. Information and rates will be furnished at the purser's Bureau, Deck B, Main Staircase

Wireless Telegrams—Information and rates furnished at Purser's Bureau. The ship is fitted with wireless installation permitting communication with both sides of the Atlantic at any time during the voyage. Attention is drawn to special facilities for cheap rates for ocean. "poste" and ocean letters

Bagages—Les passagers devront remettre au préposé aux bagages par l'entremise du garçon de cabine les coupons d'enregistrement de leurs bagages après y avoir inscrit leur nom et leur adresse européenne.

On pourra déposer dans la salle des bagages, tout bagage qui n'est pas d'un usage quotidien durant la traversée

En arrivant à Southampton les bagages seront placés en ordre alphabétique dans le hangar de la Douane. Les passagers devront s'occuper personnellement de l'examen de leurs bagages par les douaniers

Livraison des Bagages à Londres—Les passagers se rendant à Londres par le Southern Railway peuvent, en s'adressant au préposé au bagage du bord, faire enregistrer leur bagage pour livraison directe à l'hôtel ou à leur résidence à Londres. Si on désire le placer en entrepôt à Londres, le Chef de Bagage fournira les détails

Bagage pour Paris—Les passagers débarquant à Cherbourg ou Havre à destination de Paris, ou au delà via Paris, devront faire les arrangements nécessaires pour l'expédition de leurs bagages à Paris avec le préposé aux bagages du bord. L'examen douanier des bagages expédiés de cette manière aura lieu à Paris

Etiquettes pour les Bagages—On peut s'en procurer en s'adressant au préposé aux bagages du bord

Assurance du Bagage—Nous recommandons aux passagers de faire assurer leur bagage, la responsabilité de la Compagnie se bornant rigoureusement aux clauses du billet-contrat. On peut faire assurer ses bagages aux divers bureaux de la Compagnie ou au guiche du bord

Taxe Individuelle Américaine—Le montant de la taxe individuelle (Head Tax), confié au Pacifique Canadien, sera remboursé à tout bureau de la Compagnie en Europe, sur présentation de la formule 514 (Alien in Transit), dûment remplie et certifiée, aux voyageurs de passage aux Etats-Unis ou aux voyageurs traversant les Etats-Unis en transit qui quittent ce pays dans les soixante jours de leur arrivée

Personnel Parlant Français—Pour la commodité des passagers qui parlent français, le personnel du bateau comprend des dactylographes, des garçons et des femmes de chambre connaissant bien le français. On peut les reconnaître aux signes suivants:—

Dactylographes—Pattes d'épaule rouges sur leur costume

Garçons de Restaurant—Col rouge au lieu du col bleu à leur veston d'uniforme

Valets de Chambre—Col rouge adapté à leur veste blanche

Femmes de Chambres—Revers rouges au bonnet

Rail Traffic Representative sells tickets to London and Paris. Railway time-tables available

London Steamship Special Train, Southern Railway, leaves Customs Shed, Southampton, about one and a half hours after landing. Running time to Waterloo Station, London, under two hours. Ask Baggage-master for London labels

Pullman Parlor Cars are available on this train, and seat tickets can be secured from the Rail Traffic Representative on board at the rate of 4s. 6d. per seat

The American Library, 10 Rue De L'Elysée, Paris—This library is centrally situated near the Rond-Point des Champs-Élysées. Open daily from 10 am until 7 pm, except Sundays. Use of books and magazines in the library is free of charge, while they may be borrowed for outside reading for a nominal sum. The large collection of over 45,000 volumes is being constantly increased. The latest fiction, biography, and books of travel may be easily secured and the large selection of American magazines is invaluable for those who wish to keep in touch with current affairs at home

Cross Channel Services—The Company operates frequent Liner Service between Cherbourg, Southampton, Havre, Antwerp, and Hamburg; also Belfast and Glasgow. For information apply to Rail Traffic Representative

Aeroplane Service—Rail Traffic Representatives on all ships are now supplied with tickets and tariffs

British Customs Duty—On arrival at British ports passengers, including those in transit, are obliged to declare to the Customs Officials all dutiable articles however small the quantity. The following is a list of the principal articles which must be declared: Tobacco, cigars, cigarettes, spirits, liqueurs, wine, silk and artificial silk in all forms; wearing apparel including hats, gloves and shoes; linen and cotton articles including household linen and handkerchiefs; toilet requisites and toilet preparations of all kinds including scent, soap, toilet waters, powder, etc.; clocks and watches, jewellery, cameras, field and opera glasses; wireless sets and valves, cinematograph films, magnetos and other parts of motor cars and motor cycles, musical instruments, gramophones and gramophone records, typewriters, saccharin, firearms, ammunition, explosives, opium, cocaine, morphine, heroin, hashish; plumage; merchandise in baggage.

Suggestions—Passengers having any suggestions or complaints to make regarding service are requested to submit them to the Commander, Purser or Chief Steward promptly, so that immediate attention may be given

Guichet des Billets de Chemin de Fer—Billets pour Londres et Paris, en vente à bo'd. Horaires et indicateurs sur demande

Un Train Spécial pour Londres, Southern Railway, part du hangar de la douane de Southampton, environ une heure et demie après le débarquement, pour entrer en gare de Londres (Waterloo Station) moins de deux heures plus tard

Il y a sur le convoi des wagons-salon Pullman dans lesquels vous pourrez vous procurer des fauteuils au prix de 4s. 6d. chacun en vous adressant au représentant du trafic du chemin de fer

La Bibliothèque Américaine, 10 Rue de L'Elysée, Paris—Cette bibliothèque, commodément situées près du Rond-Point des Champs-Élysées, est ouverte tous les jours, sauf le dimanche, de 10 heures du matin à 7 heures du soir. Les livres et revues peuvent être consultés gratuitement, sur place, ou lus à domicile sur versement d'une somme modique. Elle compte plus de 45,000 volumes, et ce nombre s'accroît constamment. On y trouve les plus récentes publications (romans, biographies, voyages, etc.), et un vaste choix de magazines américains est particulièrement utile aux personnes soucieuses de rester en contact intellectuel avec la patrie

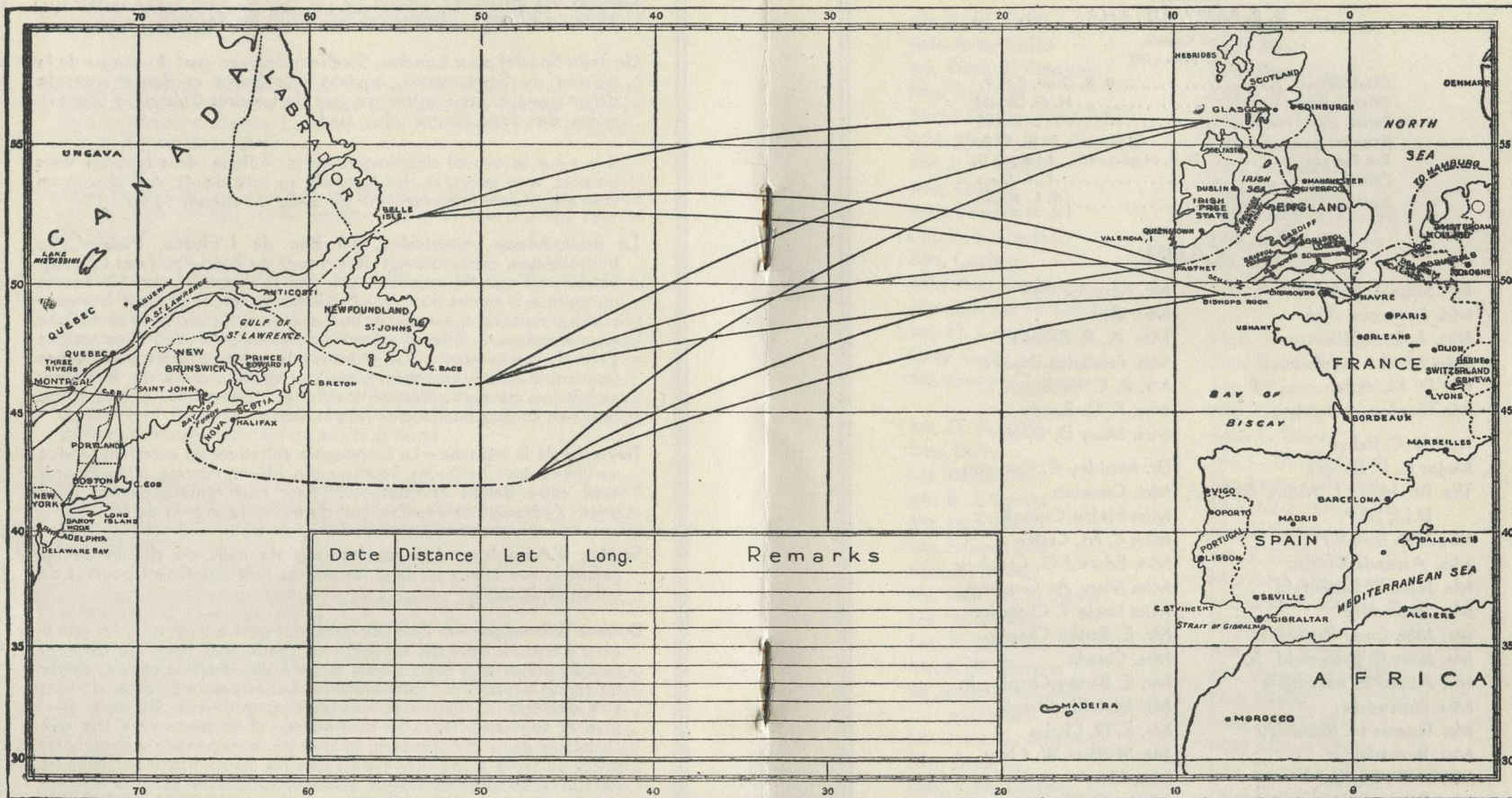
Traversée de la Manche—La Compagnie entretient un excellent service maritime entre Cherbourg, Southampton, Havre, Anvers, et Hambourg; aussi entre Belfast et Glasgow. Pour tous renseignements à ce sujet, s'adresser au représentant du trafic du chemin de fer

Service d'Aéropplane—Les représentants du trafic du chemin de fer préposés aux billets sur tous les navires sont maintenant pourvus de billets et de tarifs

Douane Britannique—A l'arrivée dans tout port britannique, les passagers, y compris ceux qui voyagent en transit, sont tenus de déclarer aux douaniers tous leurs objets sujets à des droits d'entrée, quelle qu'en soit la quantité. Suit une liste des principaux articles qui doivent être déclarés: Tabac, cigars, cigarettes, spiritueux, liqueurs, vins, soie et soie artificielle de tout genre, effets personnels tels que chapeaux, gants et chaussures; toile et toute cotonnade y compris les toiles de table et de literie ainsi que les mouchoirs, les articles de toilette y compris les savons, parfums, lotions et eaux de toilette poudres, etc., pendules et montres, bijouteries, appareils photographiques, jumelles d'approche et lorgnettes, appareils de sans-fils et pièces, films cinématographiques, magnétos et autres pièces d'automobiles et de motocyclettes, instruments de musique, phonographes et disques, clavigraphes, saccharine, armes à feu, cartouches, explosifs, opium, cocaïne, morphine, heroine, hashish, plumes pour garniture, et toute marchandise se trouvant dans le bagage personnel

Suggestions—La Canadian Pacific reçoit avec plaisir toutes les suggestions susceptibles d'améliorer son service. Les passagers sont priés de soumettre leurs suggestions au Commandant ou au Commissaire

CANADIAN PACIFIC ATLANTIC TRACK CHART.



	Nautical Miles
Quebec to Liverpool.....	2,608
Saint John, N.B. to Liverpool.....	2,740
Halifax to Liverpool.....	2,450
New York to Liverpool.....	3,119
Boston to Liverpool.....	2,854
Quebec to Southampton.....	2,759
Saint John, N.B. to Southampton.....	2,811
New York to Southampton.....	3,174
Boston to Southampton.....	2,909
Montreal to Quebec.....	139
Quebec to Father Point.....	158
Fame Point.....	330
West Point, Anticosti.....	332
Heath Point.....	438
Cape Ray.....	551

APPROXIMATE DISTANCES

APPROXIMATE DISTANCES

	Nautical Miles
Quebec to Point Amour.....	673
Belle Isle.....	734
Cape Race.....	835
Quebec to Liverpool via Belle Isle.....	2,608
Liverpool via Cape Race.....	2,794
Quebec to Glasgow via Belle Isle.....	2,545
Glasgow via Cape Race.....	2,731
Quebec to Southampton via Belle Isle.....	2,759
Southampton via Cape Race.....	2,884
Quebec to Cherbourg via Belle Isle.....	2,730
Cherbourg via Cape Race.....	2,855
Quebec to Havre via Belle Isle.....	2,796
Havre via Belle Isle.....	2,921
Inishrahull Light to Liverpool.....	200
Glasgow.....	132
Belfast.....	76

	Nautical Miles
Liverpool to Belfast.....	135
Dublin.....	121
Southampton.....	463
Point Lynas to Liverpool.....	52
Bar Lightship to Liverpool.....	14
Formby Lightship to Liverpool.....	11
Greenock to Glasgow.....	18
Liverpool.....	192
Glasgow to Belfast.....	104
Southampton to Antwerp.....	256
Hamburg.....	517
Cherbourg to Needles.....	58
Nab.....	67
Southampton.....	83

Mr. Samuel Ach
Mrs. Lawrence Ach
Mrs. J. T. Addison
Miss Martha Addison
Mr. D. M. Allen
Mr. Gordon Armstrong
Mrs. R. C. Baker
Major L. L. Bangas
The Rt. Hon. J. Milne Barbour,
D.L., M.P.
Mr. John Barbour
Mrs. Amanda Barreau
Mr. Jesse R. Battenfeld
Mrs. Battenfeld
Mr. John Curry Battenfeld
Mr. Jesse R. Battenfeld, Jr.
Mr. Alfred E. Baxendale
Mrs. Baxendale
Mr. Thomas H. Beardsley
Mrs. Beardsley
Mr. T. W. Bearup
Mrs. Bearup
Mr. Arthur S. Beattie
Mr. Benjamin V. Becker
Mrs. Becker
Miss Lydia M. Beloe
Miss Ada A. Berrisford
Miss Isabelle J. Berrisford
Miss Katherine M. Berrisford
Rt. Hon. Sir Robert L. Borden,
P.C., G.C.M.G.

Mr. R. H. Collis
Miss Betty Collis
Mr. Frank B. Common
Mrs. Common
Major George Consalves
Mrs. Natalie L. L. Cornell
Mr. J. K. Costain
Mrs. Costain
Miss Costain
Col. R. E. Coulsen
Mrs. Coulsen
Miss Ann Coulsen
Mrs. George H. Crocker
Mr. H. Cummings
Lady Currie
Mr. Garner O. Currie

Mr. D. A. Dally
Mrs. Dally
Mr. David Daly
Mr. E. J. Davies
Mr. H. F. Davis
Mr. Edward Day
Mrs. D. Dewar
Mr. John M. F. Dewar
Mr. W. Downs
Mr. A. Dreyfuss
Mr. F. W. Duncan
Sir James Dunn, Bart
and Valet
Mr. James E. Dunning
Mrs. Dunning
Mrs. J. M. Durham

Mr. David M. Eagle
Mrs. Eagle
Major M. S. Easby
Mrs. Easby
Mr. George M. Easby
Mr. Robert B. Elliott
Mrs. Elliott
Mr. Robert H. Elliott
Mr. Joseph Essaye

Sir Eugene Fiset
Lady Fiset
Miss Rene Fiset
Col. J. P. Fell
Mr. Donald A. Fleming
Mrs. Fleming
Mrs. A. Franklin
Miss M. Franklin
Miss Marjorie Franklin
Mrs. J. Fraser-Brown
Mr. R. Fuller
Mrs. Fuller

Hon. James G. Gardiner
Mrs. Gardiner
Mr. S. Gerbe
Mrs. Gordon Glass
Miss C. Glass
Mr. C. M. Goddard
Mr. Lorne Goddard
Mrs. Edwin Goldsmith
Mr. J. Goodman
Mr. F. R. Graham
Mr. Alex Graydon
Mr. John E. Green, Jr.
Mrs. Green, Jr.
Mrs. Caro Greenley
Mr. Vaughn D. Griffin
Mrs. Griffin
Miss Jane Griffin
Miss Miriam Gross
Mrs. Caroline M. Guggenheim
Miss Diane Guggenheim
and Maid

Mr. Werner Haag
Mr. George E. Hale
Mrs. Hale
Mr. William B. Hale
Miss Eunice Hale
Mr. Joseph Leland Hamilton
Mrs. Hamilton
Mr. G. W. Hands

Mrs. Hands
Viscount Hardinge
Mr. George Harrap
Mrs. Harrap
Miss Mamie Heinz
Mr. Lawrence Hellyer
Mrs. Hellyer
Mrs. David Heyman
Mrs. Arthur Hill
and Maid
Miss E. Kathleen Hill
Mrs. W. M. Hiller
Mr. Walter Hoiles
Mrs. Hoiles
Rev. Chalmers Hollbrook
Mrs. Hollbrook
Miss C. S. Howse
Mr. A. Hunter

Major H. S. Jeffs
Mrs. S. L. Jeffers
Mr. R. A. A. Johnston
Mrs. Johnston
Mrs. Leah C. Johnston
Mr. Alphonse Jongers
Mr. Max Joseph
Mrs. Joseph
Miss A. S. Judah

Mrs. M. K. Kenworthy
Mr. Samuel Kerr
Mrs. Kerr
Mr. John Knight

Mrs. L. R. Lafleche
Master F. R. Lafleche
Miss Ann Laidlaw
Miss Margaret C. Laidlaw
Mr. R. G. Nicholas Laidaw
Miss Elizabeth Lamont
Hon. Ernest Lapointe, K.C., M.P.,
P.C.
Mr. Mark Lavoie
Mr. A. L. Laws

Mr. John H. Lawson
Mrs. Lawson
Mr. John H. Lawson, Jr.
Mr. Richard Lawson
Col. J. N. S. Leslie
Mrs. Leslie
Mr. Charles Levy
Mrs. Levy
Mr. M. Lewis
Mrs. R. Lewis
Mr. K. N. Linforth
Miss Betty Long

Mr. J. A. Macauley
Hon. Ian A. Mackenzie
Mr. J. Bruce MacKinnon
Mrs. J. Bruce MacKinnon
and Maid
Master Peter MacKinnon
Miss Anne MacKinnon
Lt.-Col. A. T. MacLean, M.C.
Mr. O. C. Macpherson
Mr. Duncan K. MacTavish

Dr. C. S. McEwen
Mrs. McEwen
Mr. Donald B. McHardy

Mr. Denton Massey
Mrs. Massey
Mr. S. Livingstone Mather
Mrs. Mather
Major General The Hon. S. C.
Mewburn, C.M.G.
Mr. P. H. Michelmore
Mrs. Michelmore
Dr. Ross Millar
Mr. Harry Minchinton
Mr. Abraham Mittenhal
Mr. R. Moon
Mr. Benjamin Mordecai
Mr. Hugh Motttram
Mrs. Motttram

Mr. George Mullan
Mrs. Mullan
Miss A. Murray
Mrs. E. Musgrave
Rev. Harry S. Musson
Mrs. Musson
Mr. H. Sheppard Musson

Mr. T S Nash
Mrs. Nash
Miss E. S. Nash
Mrs. George W. Naumberg
Mr. D. P. Newton
Mr. W. E. Nutter

Miss Annie O'Callaghan
Col. H. C. Osborne

Miss Ethel Parnell
Mrs. L. M. Parsons
Miss Louise Paulus
Hon. Mrs. D. Peel
Mr. D. Peel
Mr. Ramon A. Penn
Mrs. Penn
Master John Penn
Miss Drusilla Penn
Dr. D. Sergeant Pepper
Rt. Hon. Sir George H. Perley,
P.C., G.C.M.G.

Lady Perley
Sir Percival Phillips
Mr. F. Pickles
Mr. Ernest Pitman
Mrs. Frances I. Pitman
Mr. Harold Henry Platts
Mrs. A. G. Poupore
Hon. C. G. Power
Mrs. Power
Miss Rosemary Power
Mr. F. Pursell
Mrs. Pursell

Mr. W. C. Rigsby
Mrs. Rigsby
Mr. J. W. Riley
Mrs. Riley
Miss Elizabeth Riley
Miss Eugenie Riley
Mr. James Riley
Mr. William Riley
Mr. Charles S. Ristine
Mrs. Ristine
Miss Dorothy Ristine
Mr. A. B. Rives
Mrs. Rives
Miss E. Robinson
Lady Corisande Rodney
Col. F. W. Roller
Mrs. F. G. Rolph
Mr. Louis Rose
Mrs. Rose
Mr. Henry S. Rosenthal
Mr. I. Rothstein

Mr. Alfonso Sauto
Mr. F. M. Scaglione
Mrs. Scaglione
Miss Scharzie
Mr. C. Norman Senior
Mr. Gordon N. Shaver, K.C.
Mrs. Shaver
Mr. A. D. Smith
Mrs. Smith
Miss Frances Smithers
Mr. C. J. L. Snowden
Mrs. Snowden
Mr. J. C. Steer
Mrs. Steer
Mr. Max Steiner
Mrs. Steiner
Mr. H. Stephens

Mr. John T. Tebbutt
Mr. James W. Terris, Jr.
Mr. J. Testa

Mr. George G. Thomas
Mrs. Thomas
Dr. L. C. Tombs
Miss Emma B. Turnbach
Miss Ann Turner

Mrs. G. F. Venable

Miss L. Waldie
Miss Peggy Waldie
Miss E. M. Ward
Mrs. A. W. Wardill
Mr. Allen Wardwell
Mrs. Wardwell

Mr. F. W. Watkins
Dr. Watkinson
Miss Watkinson
Mrs. David Baker Watson
Mr. Thomas R. B. Watson
Mr. O. H. Williams
Mrs. Williams
Miss Olive Wilson
Mr. Walter Woods
Mrs. Woods

Mr. J. L. Younghusband
Mrs. Younghusband
Miss Gwendolyn Younghusband
Miss Judy Younghusband

TOURIST

Mr. James Archibald
Mrs. Archibald
Miss T. N. Allen
Dr. G. G. Armitage
Dr. H. G. Armstrong
Mrs. Armstrong
Miss H. Finch Atkins
Mrs. R. S. Augustus

Mr. H. H. Ballauff
Mr. Bryan Ballauff
Miss J. Banks
Dr. A. J. Barton
Mr. Robert J. Barton
Miss Phyllis Jean Barton
Mrs. Marie Batard
Miss Louise Beattie
Mr. C. J. V. Bellamy
Mrs. Bellamy
Mr. T. Bellamy
Mrs. Bellamy
Miss Mabel K. Belyea
Mr. R. A. Benjamin
Mrs. Benjamin
Mr. F. H. Blair
Mr. S. Blowers
Master S. Blowers
Miss D. F. Boles
Mrs. M. A. Bradshaw
Mr. E. J. Bunt
Mr. James G. Bunt
Mr. B. J. Burken

Miss Ruth Calhoun
Miss A. Carmichael
Miss Anne Carmichael
Miss Louise Carmichael
Mr. Frank Carter
Mr. Samuel Carter
Mrs. Clifford C. Charles

Dr. W. D. Clarke
Mrs. Clarke
Miss E. B. Clift
Mr. H. H. Collins
Miss P. M. Collins
Miss Isabel Conway
Dr. J. D. Cunningham

Miss Kathryn Dailey
Miss Margaret Dailey
Mrs. W. Davidson
Mr. Edward De Buyscher
Mr. W. J. Delles
Mrs. S. C. Delles
Miss R. W. Delles
Miss C. Derry
Mr. William Duff
Mrs. Duff
Master Dennie Duff
Master William Duff
Miss M. Duffie
Mr. Herbert Dugdale
Mrs. S. Dugdale
Master Colin Dugdale
Miss Marion Dugdale
Miss Winifred Dugdale
Mr. S. M. Duncan-Dempster
Miss G. M. Duncan-Dempster
Miss M. A. Duncan-Dempster
Miss Nellie Duncan-Dempster
Mrs. J. A. Dundas
Miss D. J. Dundas
Miss W. A. Dundas

Mr. R. P. Egerton
Mrs. Egerton
Master Piers Brian Egerton
Miss May Evans
Pipe Major S. H. Featherstone
Mr. V. J. Ferguson

Mr. S. C. Frost
Mrs. Frost

Mrs. W. W. Garvin
Miss M. H. Gill
Mrs. William Glass
Mrs. E. Glauser
Mrs. William Gleafke
Master William H. Gleafke
Miss E. S. Goldman
Mr. A. W. Goodman
Mrs. Goodman
Miss Audrey E. Goodman
Mrs. B. Goodwin
Mrs. A. M. Gourlie
Miss Helen Grant
Miss H. Gray
Mr. Alberto Guerrero

Mrs. M. M. Haley
Mr. George R. Harris
Mrs. Harris
Mr. Paul Haurwitz
Mrs. Haurwitz
Miss Lilian Hill
Lt.-Col. H. F. L. Hilton-Green
Mrs. I. H. Hilton-Green
Mr. Martin Himler
Rev. Ralph B. Hindman
Mrs. Hindman
Mr. Frank Hollingsworth
Mrs. Hollingsworth
Mr. W. Humphreys
Dr. C. B. Hutchison
Mrs. Hutchison
Mr. W. Hutchinson
Mrs. Hutchinson

Miss K. M. Ibberson
Mr. A. E. Irish
Mrs. Irish
Mr. C. T. Irwin
Mrs. Irwin
Master B. H. Irwin

Mr. J. S. Jackson
Mr. D. W. Joberns

Miss Eleanor Kerr
Mrs. E. A. Kershaw
Mr. F. Kiener
Mrs. Kiener
Mr. Andrew King
Mrs. King
Mrs. Lyda King
Dr. R. M. Kirkpatrick
Mr. W. F. Krein

Miss A. Lahtinen
Mr. Andre Laurent
Mrs. Laurent
Mrs. Anne Lecuyer-Hogan
Mr. H. Le Messurier
Mr. H. Liebergull
Miss Margaret Lindsay
Mrs. W. J. Linford
Miss Mary Lossie
Mrs. A. Lyle

Miss Evelyn H. McAlpine
Mr. J. E. McCarthy
Mrs. McCarthy
Miss M. Gyla McDowell
Miss Helen F. McEwen

Mr. Edwin G. Maddock
Dr. Marcus Maier
Mrs. Dominique Malky
Mr. Elie Malky
Mr. Gordon Malky
Mrs. Matt Malnor
Miss Helen Manard
Miss Edith Mann
Mr. A. James Mansell
Mr. W. Marti
Mrs. Florence Maxwell
Miss Annie Mellor

Mrs. Edwin L. Miller
Miss E. E. Montgomery
Mr. Gaston Moreau
Mrs. Pauline St. Claire Morris
Mr. J. H. Mulally
Mrs. Mulally
Mrs. V. Mullon
Mr. Mundy
Mr. R. F. Munro
Mrs. Ruth E. Munro
Mrs. W. H. Murray
Miss I. Myers

Mrs. W. Noble

Mr. E. Ormson
Miss Mary Ortmeyer
Mr. E. Ostler
Mrs. Ostler

Mrs. William Page
Rev. Emile Pascal, O.M.I.
Miss Louise Paterson
Miss A. W. Patterson
Mrs. M. E. Peereboom
Miss Mabel F. Peterson
Miss Rita A. Peterson
Mrs. L. M. Pinhey
Mr. A. W. Platts
Mrs. M. Platts
Miss M. A. E. Platts
Mrs. V. Poure
Miss Nancy Pyper

Mr. Hans Rapp
Mr. J. Riddoch
Mr. W. H. Rippin
Mrs Rippin
Chief Ritchie
Mrs. Ritchie

Mr. H. W. Rogers
Mrs. Rogers
Miss Sylvia Doris Rogers
Mr. F. H. Rowe
Miss Irene Rushton

Miss Margaret Sankey
Dr. Emil Schlitter
Mr. H. G. Scott
Mr. C. Shar
Mrs. Shar
Sister May Benoit
Sister Xavier de Jesus Huet
Sister Antoinette Kasper
Sister Louis Stanislas Le Fevre
Sister Irene Marchessault
Sister Helene Maynard
Sister Rita Page
Sister Louis Therese Robert
Sister Maire Rose Tourigny
Sister Marie Anne Vignault
Miss L. Smith
Mr. John A. Sparrow
Mrs. Sparrow
Miss Elizabeth Sparrow
Mr. John B. Sparrow
Miss Joan B. Spencer
Miss B. Staples
Mr. F. W. Stiles
Mr. John N. Stroud
Mrs. Stroud

Mr. J. F. Tacon
Prof. A. E. Tilby
Mrs. Tilby
Miss Margaret E. Tinsley
Mr. Ernest H. Titterington
Mrs. Titterington
Mr. W. Todd
Mrs. Todd
Dr. L. C. Tombs
Miss Grace D. Treat

Miss G. Wardle
Mr. J. M. Watson
Miss Lilian Watson
Miss Rose Wearb
Mr. C. N. Whitney
Mrs. Whitney

Miss Williams
Mrs. R. A. Withers
Mrs. Bella Wolfe
Mrs. Frank Wright

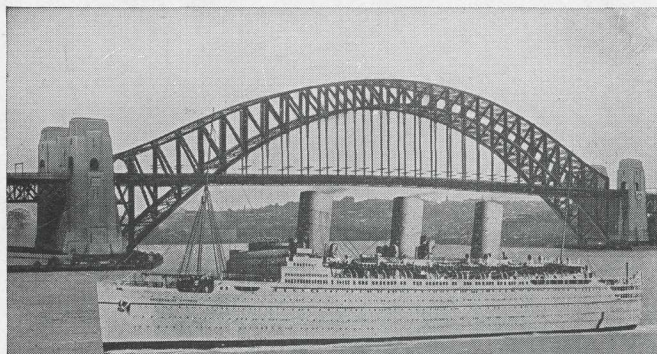
Mrs. W. R. Young

CANADIAN AUSTRALASIAN LINE

	TONNAGE	
	Gross	Displacement
AORANGI	17491	22000
NIAGARA	13415	20000

Maintain Regular Service between
VANCOUVER

AUSTRALIA	NEW ZEALAND
HONOLULU	SUVA



SYDNEY'S NEW BRIDGE AND EMPRESS OF BRITAIN

NEW BRIDGE
Opened March, 1932
Length of Arch Span 1650 feet
Breadth 160 feet
Weight of Arch Steel Work 38000 Tons

EMPRESS OF BRITAIN
In Service May, 1931
Length 758 feet
Breadth 97 feet
Gross Tonnage 42500

TRAFFIC AGENTS
For Canada and United States
CANADIAN PACIFIC

For Australia and New Zealand
UNION STEAMSHIP COMPANY OF NEW ZEALAND

UNIFORM REGULATIONS



Captain and Staff Captain
GOLD



Chief Officer
GOLD



1st Officer
GOLD



2nd Officer
GOLD



Junr. Officers
GOLD



Chief Engineer
GOLD AND PURPLE



Asst. Chf. Engineer
GOLD AND PURPLE



2nd Engineer
GOLD AND PURPLE



3rd Engineer
GOLD AND PURPLE



4th Engineer
GOLD AND PURPLE



Junr. Engineer
PURPLE



Purser
GOLD AND WHITE



2nd Purser
GOLD AND WHITE



Senr. Surgeon
GOLD AND RED



Junr. Surgeon
GOLD AND RED



Asst. Purser
GOLD AND WHITE



Writer
WHITE



Chief Steward
GOLD



2nd Steward
GOLD



1st Electrician
GOLD AND PURPLE



2nd Electrician
GOLD AND PURPLE



3rd Electrician
GOLD AND PURPLE



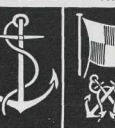
Wireless Operator
GOLD



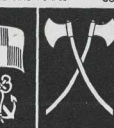
Buttons
GOLD



Buttons
GOLD



Buttons
GOLD



Buttons
GOLD, RED AND WHITE



Buttons
GOLD



Buttons
GOLD



Buttons
GOLD



Buttons
GOLD AND PURPLE



Buttons
GOLD AND BLUE



Buttons
GOLD AND WHITE



Buttons
GOLD AND WHITE



Buttons
GOLD AND RED



Buttons
GOLD AND RED



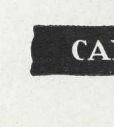
Buttons
GOLD AND WHITE



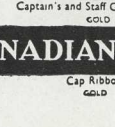
Buttons
WHITE



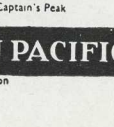
Buttons
GOLD AND BLUE



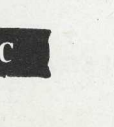
Buttons
GOLD



Buttons
GOLD



Buttons
GOLD AND PURPLE



Buttons
GOLD AND PURPLE



Buttons
GOLD AND PURPLE



Buttons
GOLD



Buttons
GOLD AND PURPLE



Buttons
GOLD AND PURPLE



Buttons
GOLD AND BLUE



Buttons
GOLD AND WHITE

Buttons
GOLD AND WHITE

Buttons
GOLD AND RED

Buttons
GOLD AND RED

Buttons
GOLD AND WHITE

Buttons
WHITE

Buttons
GOLD AND BLUE

Buttons
GOLD AND WHITE

Buttons
GOLD AND WHITE

Buttons
GOLD AND RED

Buttons
GOLD AND RED

Buttons
GOLD AND WHITE

Buttons
WHITE

Buttons
GOLD AND BLUE

Buttons
GOLD AND WHITE

Buttons
GOLD AND WHITE

Buttons
GOLD AND RED

Buttons
GOLD AND RED

Buttons
GOLD AND WHITE

Buttons
WHITE

Buttons
GOLD AND BLUE

Buttons
GOLD AND WHITE

Buttons
GOLD AND WHITE

Buttons
GOLD AND RED

Buttons
GOLD AND RED

Buttons
GOLD AND WHITE

Buttons
WHITE

Buttons
GOLD AND BLUE

Buttons
GOLD AND WHITE

Buttons
GOLD AND WHITE

Buttons
GOLD AND RED

Buttons
GOLD AND RED

Buttons
GOLD AND WHITE

Buttons
WHITE

Buttons
GOLD AND BLUE

Buttons
GOLD AND WHITE

Buttons
GOLD AND WHITE

Buttons
GOLD AND RED

Buttons
GOLD AND RED

Buttons
GOLD AND WHITE

Buttons
WHITE

Buttons
GOLD AND BLUE

Buttons
GOLD AND WHITE

Buttons
GOLD AND WHITE

Buttons
GOLD AND RED

Buttons
GOLD AND RED

Buttons
GOLD AND WHITE

Buttons
WHITE

Buttons
GOLD AND BLUE

Buttons
GOLD AND WHITE

Buttons
GOLD AND WHITE

Buttons
GOLD AND RED

Buttons
GOLD AND RED

Buttons
GOLD AND WHITE

Buttons
WHITE

Buttons
GOLD AND BLUE

Buttons
GOLD AND WHITE

Buttons
GOLD AND WHITE

Buttons
GOLD AND RED

Buttons
GOLD AND RED

Buttons
GOLD AND WHITE

Buttons
WHITE

Buttons
GOLD AND BLUE

Buttons
GOLD AND WHITE

Buttons
GOLD AND WHITE

Buttons
GOLD AND RED

Buttons
GOLD AND RED

Buttons
GOLD AND WHITE

Buttons
WHITE

Buttons
GOLD AND BLUE

Buttons
GOLD AND WHITE

Buttons
GOLD AND WHITE

Buttons
GOLD AND RED

Buttons
GOLD AND RED

Buttons
GOLD AND WHITE

Buttons
WHITE

Buttons
GOLD AND BLUE

Buttons
GOLD AND WHITE

Buttons
GOLD AND WHITE

Buttons
GOLD AND RED

Buttons
GOLD AND RED

Buttons
GOLD AND WHITE

Buttons
WHITE

Buttons
GOLD AND BLUE

Buttons
GOLD AND WHITE

Buttons
GOLD AND WHITE

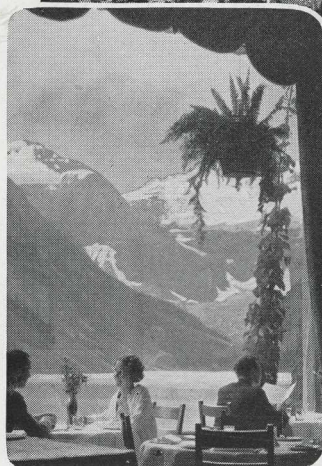
Buttons
GOLD AND RED

Buttons
GOLD AND RED

Buttons
GOLD AND WHITE

Buttons
WHITE

*Castles in
the Blue!*



Banff
and **LAKE LOUISE**

in the Canadian Rockies

ALPINE peaks at home! . . . -Vacation Days! . . . -Colorful—thrilling—spectacular! Golf on a mile high course, swimming pools, saddle ponies, cowboy guides for the trails, fast tennis courts . . . Music, dancing. Smooth motor roads. De luxe suites or single rooms with bath at attractive rates. With baronial Banff Springs Hotel your summer home, include Chateau Lake Louise—Visit Emerald Lake Chalet.

Fast Canadian Pacific trans-continental train service via the Canadian Rockies to the north Pacific Coast—convenient connections to California.

Alaska All-Expense Cruises by Canadian Pacific Princess Line steamers, leaving Vancouver and Victoria.

In Vancouver, stop at the Hotel Vancouver. In Victoria, the Empress Hotel will welcome you to Vancouver Island, now famous as "Canada's Evergreen Playground."

Canadian Pacific

CANADIAN PACIFIC EXPRESS COMPANY

FORWARDS MERCHANDISE, MONEY
VALUABLES

TO ALL PARTS OF THE WORLD

ISSUES MONEY ORDERS, FOREIGN CHEQUES AND
TRAVELLERS CHEQUES, PAYABLE EVERYWHERE.



Canadian Pacific Express Travellers Cheques are spendable everywhere. They are issued in Canadian and United States Dollars in denominations of \$10, \$20, \$50 and \$100, and in Sterling in denominations of £2, £5, £10 and £20.

No personal identification is required—your counter-signature on the cheque identifies you.

They insure you against loss, are cashed by thousands of banks and all Express Companies, and accepted in payment of tickets and accounts by railway, steamship and sleeping-car companies, tourist agencies, first-class stores and hotels, wherever you happen to be, which ensures you against delay and inconvenience.

For sale by all Canadian Pacific Agents
and by Purser on Shipboard

