

DAILY SERVICE

Read Down	Steamships "Princess Alice" or "Princess Charlotte"	"Pr. Elizabeth" or "Pr. Joan"
Lv. Vancouver Ar. Victoria Lv. Victoria Ar. Seattle	10:30 a.m.② 3:45 p.m. 4:30 p.m. 9:50 p.m.	Night service temporarily withdrawn.
Lv. Seattle Ar. Victoria Lv. Victoria Ar. Vancouver	7:20 a.m.① 12:35 p.m. 1:20 p.m. 6:35 p.m.(a)	Night service temporarily withdrawn.

(a) Arrives at 6:40 p.m. prior to June 24.

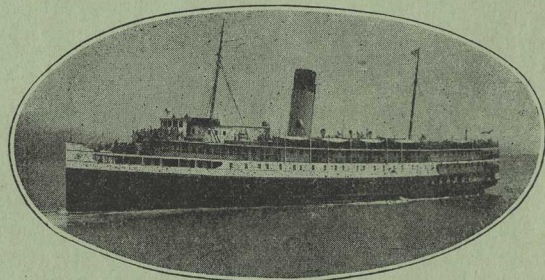
① Breakfast, 35c, 50c and 75c; Children, 35c to 40c; Table d'Hote Luncheon, \$1.00; Children, 50c; Afternoon Tea, 35c. No dinner served but coffee room open for entire voyage, serving sandwiches, tea, coffee, etc.

② Table d'Hote Luncheon, \$1.00; Children, 50c; Table d'Hote Dinner, \$1.25; Children, 65c. Coffee room open for entire trip, serving sandwiches, tea and coffee, etc.

③ Breakfast, 35c, 50c and 75c; Children, 35c to 40c. Coffee room service a la carte serving light lunch snacks, sandwiches, tea, coffee, etc. (Sandwiches and coffee served in staterooms 35c.)

AUGMENTED SERVICE Sundays only:

Lv. Vancouver 4:30 p.m. Ar. Victoria 9:45 p.m.



S.S. Princess Alice

The times and dates of arrival and departure from various ports will be followed as closely as possible, but are subject to tidal and weather conditions and to change without notice.

VANCOUVER - NANAIMO

In effect to June 28, 1945 inclusive.

Steamship "Princess Elaine"

Read Down	Daily except Saturday and Sunday		Saturday Only		Sunday Only	
	a.m.	p.m.	a.m.	p.m.	a.m.	p.m.
Lv. Vancouver	11:00	6:15	11:00	6:15	11:00	9:00
Ar. Nanaimo	1:20	8:45	1:20	8:45	1:20	11:30
	p.m.	p.m.	p.m.	p.m.	p.m.	p.m.
Lv. Nanaimo	a.m.	p.m.	a.m.	p.m.	p.m.	p.m.
Ar. Vancouver	7:30	2:45	7:30	2:45	9:15	5:45
	10:00	5:15	10:00	5:15	11:45	8:15
	a.m.	p.m.	a.m.	p.m.	p.m.	p.m.

VANCOUVER - NANAIMO

In effect June 29 to September 4 inclusive.

Steamships "Princess Elaine" and "Princess Victoria"

Read Down	Daily Except Sunday			Sunday Only		
	a.m.	p.m.	p.m.	a.m.	p.m.	p.m.
Lv. Vancouver	11:00	2:00	6:15	11:00	2:00	9:00
Ar. Nanaimo	1:20	4:30	8:35	1:20	4:30	11:20
	p.m.	p.m.	p.m.	p.m.	p.m.	p.m.
Lv. Nanaimo	a.m.	p.m.	p.m.	a.m.	p.m.	p.m.
Ar. Vancouver	7:30	2:45	6:30	9:00	5:30	6:30
	9:50	5:05	9:00	11:20	7:50	8:50
	a.m.	p.m.	p.m.	a.m.	p.m.	p.m.

MEAL SERVICE (a la carte service)

ESQUIMALT AND NANAIMO RAILWAY CONNECTIONS

Steamship from Vancouver 11 a.m. (daily except Sunday) connects with trains for Cameron Lake, Port Alberni, Courtenay and waypoints; for Victoria and points south.

Steamship from Nanaimo 2:45 p.m. (daily except Sunday) connects with train from Port Alberni, Courtenay and Cameron Lake and from Victoria and points south.

GULF ISLANDS SERVICE

Steamship "Princess Mary"

MONDAY		THURSDAY	
Lv. VANCOUVER	9:00 a.m.	Lv. VANCOUVER	9:00 a.m.
Ar. Galiano Island②		Ar. Galiano Island②	
Ar. Mayne Island		Ar. Mayne Island	
Ar. Ganges Harbour (Salt Spring Island)		Ar. Hope Bay (N. Pender Is.)③	
Ar. Hope Bay (N. Pender Is.)③		Ar. Saturna Island	
Ar. Saturna Island		Ar. South Pender Island	
Ar. South Pender Island		Ar. Ganges Harbour (Salt Spring Island)	
Ar. Victoria, about	6:30 p.m.	Ar. Vancouver, about	8:00 p.m.

TUESDAY		SATURDAY	
Lv. VICTORIA	10:30 a.m.	Lv. VANCOUVER	9:00 a.m.
Ar. James Island (C.I.L.)①		Ar. Galiano Island②	
Ar. Sidney		Ar. Mayne Island	
Ar. Port Washington (N. Pender Is.)③		Ar. Port Washington (N. Pender Is.)③	
Ar. Ganges Harbour (Salt Spring Island)		Ar. Ganges Harbour (Salt Spring Island)	
Ar. Mayne Island		Ar. Vancouver, about	6:00 p.m.
Ar. Galiano Island②			
Ar. Vancouver, about	7:30 p.m.		

① C.I.L.—Canadian Industries Ltd. Wharf.
② Montague Harbour and Gossip Island reached via Galiano Island.

③ Call is made at North Pender Island on each of the above trips, either at Hope Bay or Port Washington. The distance between these ports by road is about 2½ miles.

MEAL SERVICE

Breakfast 35c to 75c; Children 35c and 40c; Luncheon 75c; Children 40c; Dinner 75c; Children 40c; Afternoon Tea 35c.

Buffet Service in Coffee Room.

POWELL RIVER - COMOX

Steamship "Princess Mary"

	Tuesday	Thursday	Saturday
Lv. Vancouver	11:45 p.m. Tue.	11:45 p.m. Thu.	11:45 p.m. Sat.
Ar. Powell River	6:30 a.m. Wed.	6:30 a.m. Fri.	6:30 a.m. Sun.
Lv. Powell River	8:00 a.m. Wed.	8:00 a.m. Fri.	8:00 a.m. Sun.
Ar. Blubber Bay	—	a.m. Fri.	—
Ar. Hornby Island	10:00 a.m. Wed.	—	① 10:00 a.m. Sun.
Ar. Denman Island	a.m. Wed.	—	—
Ar. Union Bay	p.m. Wed.	a.m. Fri.	a.m. Sun.
Ar. Comox	p.m. Wed.	p.m. Fri.	p.m. Sun.
Lv. Comox	2:30 p.m. Wed.	2:30 p.m. Fri.	6:00 p.m. Sun.
Ar. Blubber Bay	—	p.m. Fri.	—
Ar. Powell River	p.m. Wed.	p.m. Fri.	p.m. Sun.
Lv. Powell River	11:15 p.m. Wed.	11:15 p.m. Fri.	11:15 p.m. Sun.
Ar. Vancouver	6:30 a.m. Thu.	6:30 a.m. Sat.	6:30 a.m. Mon.

① Sunday call at Hornby Island in effect June 23 to September 2 inclusive.

Where no date shown steamship does not call.

MEAL SERVICE

Breakfast 35c to 75c; Children 35c and 40c; Table d'Hote Luncheon 75c; Children 40c; Dinner 75c; Children 40c; Afternoon Tea 35c.

Buffet Service in Coffee Room.

ESQUIMALT AND NANAIMO RAILWAY

NORTHBOUND train for Royston and Courtenay leaves Union Bay at 4:54 p.m. daily except Sunday.

SOUTHBOUND train for Nanaimo, Victoria and intermediate points leaves Union Bay at 11:05 a.m. daily except Sunday.

OCEAN FALLS - PRINCE RUPERT

NOTE:—Government regulations prohibit sailing times on this Route being published. For particulars apply personally to nearest Canadian Pacific Agent.

VANCOUVER TO PRINCE RUPERT

Lv. VANCOUVER	Saturday
Ar. Englewood	Sunday
" Alert Bay	"
" Port McNeill	"
" Port Hardy (Hardy Bay)	"
" Ocean Falls	"
Lv. Ocean Falls	"
Ar. ① Butedale	Monday
Ar. PRINCE RUPERT	"

PRINCE RUPERT TO VANCOUVER

Lv. PRINCE RUPERT	Monday
Ar. ① Butedale	Tuesday
" Ocean Falls	"
Lv. Ocean Falls	"
Ar. Port Hardy (Hardy Bay)	Wednesday
" Port McNeill	"
" Alert Bay	"
" Englewood	"
" Campbell River	"
Ar. VANCOUVER	Thursday

① Boat Landing.

WEST COAST VANCOUVER ISLAND

NOTE:—Government regulations prohibit sailing dates on this Route being published. For particulars of unpublished schedules apply personally to nearest Canadian Pacific Agent.

PORTS OF CALL

VICTORIA

Port Renfrew

① ② Carmanah

② Clo-oose

Bamfield

① ② Sarita Bay

① Ecoole

Kildonan

① Green Cove

① Franklin River

① Underwood Cove

④ PORT ALBERNI⑥

Ucluelet

① Port Albion

(Ucluelet Arm)

Tofino

Clayoquot

② Kakawis

⑤ Bedwell River

⑤ Herbert Arm

Ahousat

② ⑤ Sydney Inlet

③ Refuge Cove

② Hesquiat

Nootka Cannery

⑤ Muchalat

③ Tasis River

Ceepeecee

① Hecate

Zeballos

① Markale

Chamiss Bay

② Kyuquot Village⑤

③ Winter Harbour⑦

③ Quatsino Village

③ Coal Harbour

⑤ Holberg

③ Jeune Landing

PORT ALICE

① Call made when business offers.

② Boat landing.

③ Call is made northbound each trip. The southbound call will be made if business offers.

④ Steamship will not sail northbound prior to 11:59 p.m. on advertised date.

⑤ Call only by special arrangement.

⑥ Steamship will not sail southbound prior to 11:00 a.m. on advertised date.

⑦ During months December to March inclusive call will not be made when call is made at Holberg.

ALASKA

NOTE:—Government regulations prohibit sailing dates on this Route being published. For particulars of unpublished schedules apply personally to nearest Canadian Pacific Agent.

PORTS OF CALL

SEATTLE

VICTORIA

See Note ①

VANCOUVER

ALERT BAY

PRINCE RUPERT

KETCHIKAN

WRANGELL

JUNEAU

SKAGWAY

① Northbound passengers from Seattle or Victoria may leave on local steamships within fifteen (15) days previous to sailing of Alaska steamships from Vancouver.

WHITE PASS AND YUKON ROUTE SERVICE

Connecting with all Canadian Pacific Railway Company (B.C. C.S.), Alaska steamers. During the summer season, daily train service is operated between Skagway and Whitehorse. Dawson steamships leave Whitehorse on frequent schedules, two trips per week.

Semi-weekly train service maintained during the balance of the year.

Plane service at least twice a week between Whitehorse, Dawson and Mayo.

STATEROOM ACCOMMODATION

Excellent sleeping accommodation is provided on all "Princess" ships between all ports.

Single berths at moderate rates, exclusive staterooms from two berth rooms to deluxe suites at reasonable rates to suit all requirements.

Open berths (men only) on night ships between Vancouver-Victoria and Vancouver-Powell River are on sale on application to Agent.

CANADIAN PACIFIC B. C. COAST STEAMSHIP SERVICES

FALL AND WINTER SCHEDULES - 1941 & 1942

(Please note important changes)

Schedules of our B. C. Coast Services, as shown on Page 48, also in other tables of Folder A (June 29 issue), will be changed, effective September 2, 1941.

Pending distribution of new issue of Folder A, am showing below particulars of the Triangle Service between VANCOUVER - VICTORIA - SEATTLE, and the overnight service between VANCOUVER and VICTORIA. Please consult us for details for other B.C.C.S.S. Services.

ALL TIMES SHOWN ARE "PACIFIC STANDARD"

TRIANGLE SERVICE

IN EFFECT SEPTEMBER 2 TO SEPTEMBER 27 INCLUSIVE

Lv. Vancouver	10:30 a.m.	Lv. Seattle	9:00 a.m.
Ar. Victoria	3:45 p.m.	Ar. Victoria	1:15 p.m.
Lv. Victoria	4:30 p.m.	Lv. Victoria	2:00 p.m.
Ar. Seattle	9:50 p.m.	Ar. Vancouver	6:40 p.m.
Lv. Seattle	11:00 p.m.	Lv. Vancouver	10:50 p.m.
Ar. Vancouver	8:00 a.m.	Ar. Seattle	8:00 a.m.

IN EFFECT SEPTEMBER 28 TO OCTOBER 31 INCLUSIVE

Lv. Vancouver	10:30 a.m.	Lv. Seattle	8:30 a.m.
Ar. Victoria	3:45 p.m.	Ar. Victoria	1:00 p.m.
Lv. Victoria	4:30 p.m.	Lv. Victoria	1:45 p.m.
Ar. Seattle	9:50 p.m.	Ar. Vancouver	6:40 p.m.
Lv. Seattle	11:00 p.m.	Lv. Vancouver	10:30 p.m.
Ar. Vancouver	8:00 a.m.	Ar. Seattle	7:30 a.m.

IN EFFECT NOVEMBER 1 FOR WINTER MONTHS (SUBJECT TO CHANGE AFTER MARCH 15, 1942)

Lv. Vancouver	10:30 a.m.	Lv. Seattle	7:20 a.m.
Ar. Victoria	3:45 p.m.	Ar. Victoria	12:35 p.m.
Lv. Victoria	4:30 p.m.	Lv. Victoria	1:20 p.m.
Ar. Seattle	9:50 p.m.	Ar. Vancouver	6:40 p.m.

Night service between Vancouver and Seattle temporarily withdrawn, beginning November 1st.

VANCOUVER-VICTORIA NIGHT SERVICE

Lv. Vancouver	11:00 p.m.	Lv. Victoria	11:00 p.m.
Ar. Victoria	6:00 a.m.	Ar. Vancouver	6:00 a.m.

Thanking you for your continued cooperation, I am

Very truly yours,

E. A. Kenney
GENERAL AGENT.

EAK:H
Phila., Pa. - 8/29/41 - 415

CANADIAN PACIFIC

444 Seventh Ave.
Pittsburgh, Pa.

1500 Walnut St. Bldg.
Philadelphia, Pa.

"CANADA WELCOMES U. S. CITIZENS - NO PASSPORTS"