

CANADIAN PACIFIC RAILWAY COMPANY

HOTEL SYSTEM

H. F. MATHEWS,  
GENERAL MANAGER, MONTREAL  
D. J. GOWANS,  
ASST. GENERAL MANAGER, MONTREAL  
A. E. ROBERTSON,  
ASST. GENERAL MANAGER, WINNIPEG

Winnipeg, Manitoba,  
22nd April, 1935.

Miss Monk,  
968 Haywood Avenue,  
Victoria, B. C.

Dear Miss Monk:

You will remember that, when I saw you in  
Victoria, I stated that it did not seem likely there would be  
any vacancies in which you could be used. After interviewing  
the Mountain Managers, I have found this to be the case.

I will, however, keep you in mind in the  
event of anything turning up in the future.

Yours very truly,

*A. E. Robertson*

Asst. General Manager, Western Hotels.



CANADIAN PACIFIC RAILWAY COMPANY  
HOTEL SYSTEM

# Atlantic to Pacific



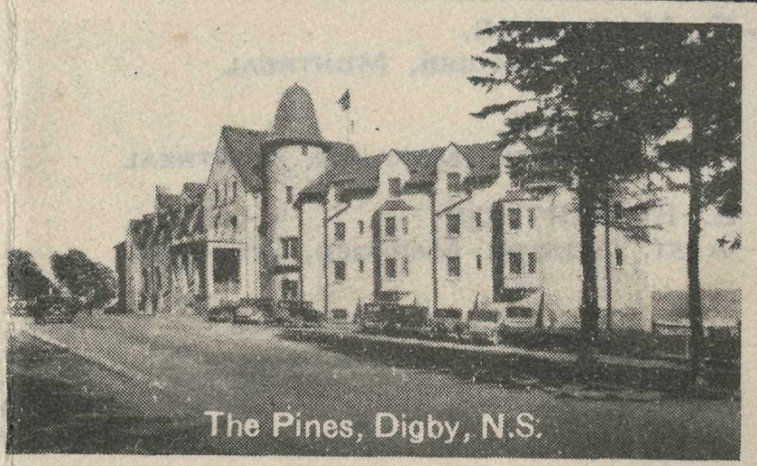
Cornwallis Inn, Kentville, N.S.



Lakeside Inn,  
Yarmouth, N.S.



Chateau Frontenac, Quebec, Que.



The Pines, Digby, N.S.



Algonquin Hotel,  
St. Andrews, N.B.



Place Viger Hotel, Montreal, Que.



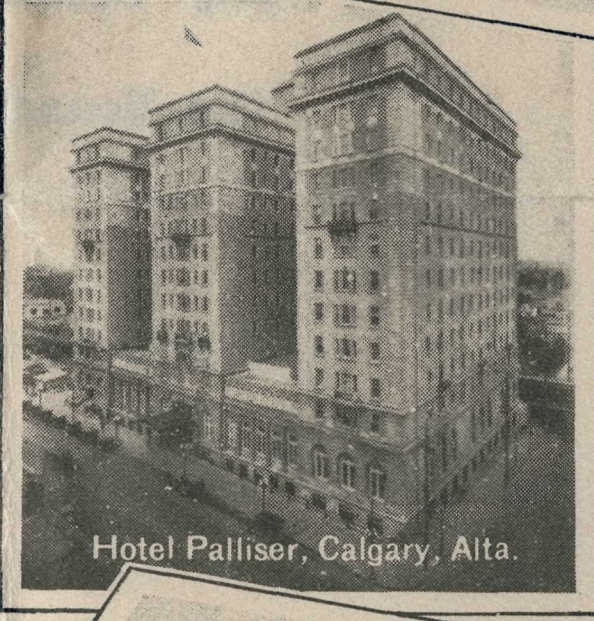
Royal York Hotel, Toronto, Ont.



Royal Alexandra Hotel,  
Winnipeg, Man.



Hotel Saskatchewan,  
Regina, Sask.



Hotel Palliser, Calgary, Alta.



Chateau Lake Louise,  
Lake Louise, Alta.



Emerald Lake Chalet,  
Emerald Lake,  
(near Field, B.C.)



Hotel Vancouver,  
Vancouver, B.C.



Banff Springs Hotel, Banff, Alta.



Empress Hotel, Victoria, B.C.

## CANADIAN PACIFIC HOTELS