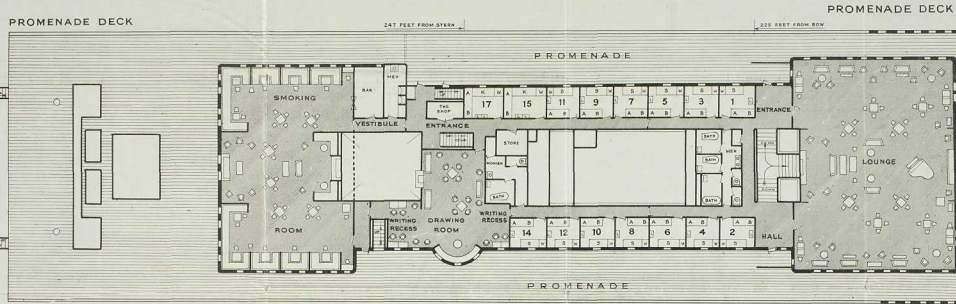
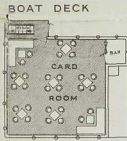


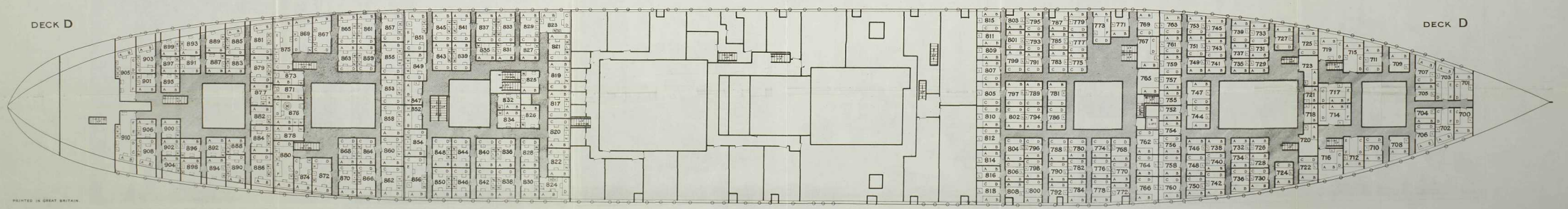
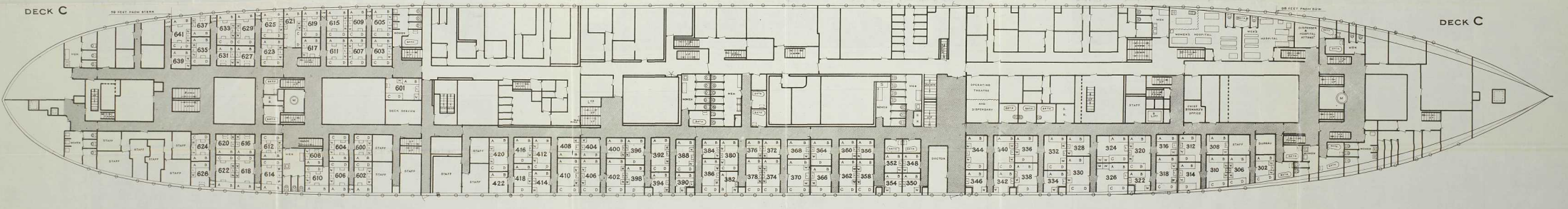
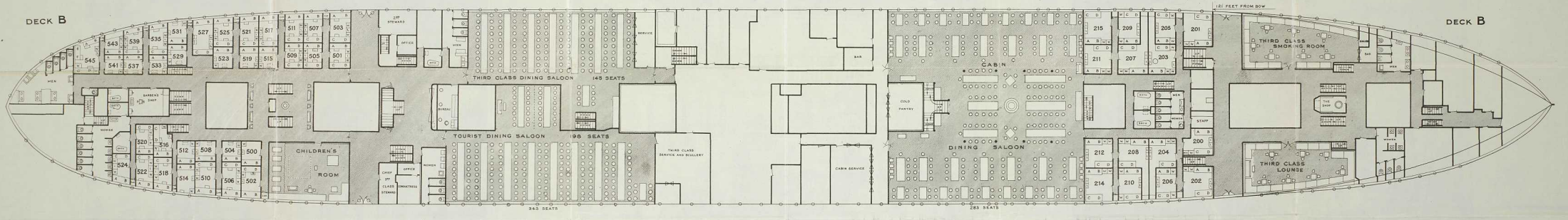
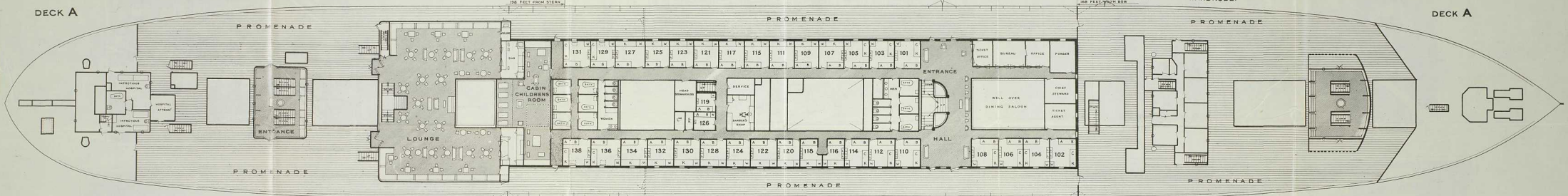
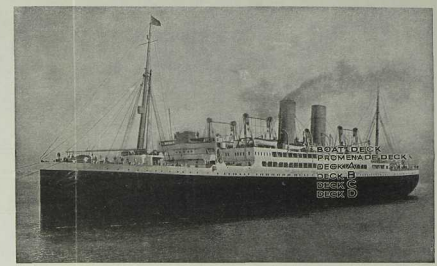
SEPT 1930
22 QUEEN ST W. TORONTO
TRAVEL SERVICE
Plan of
**Canadian Pacific
MINNEDOSA**

TRANS-ATLANTIC

TWIN RECIPROCATING AND SINGLE TURBINE ENGINES-TRIPLE SCREWS
21,000 TONS DISPLACEMENT: GROSS REGISTER, 15,200 TONS.
LENGTH, 546 FEET: BREADTH, 67 FEET: SPEED, 16 KNOTS.



- A.C.E. — UPPER BERTHS.
- B.D.F. — LOWER BERTHS.
- K. — SOFA BERTHS.
- S. — SOFA SEATS.
- L. — LAVATORY.
- W. — WARDROBE.
- PROMENADE DECK SPACE.
- OTHER PUBLIC SPACES.

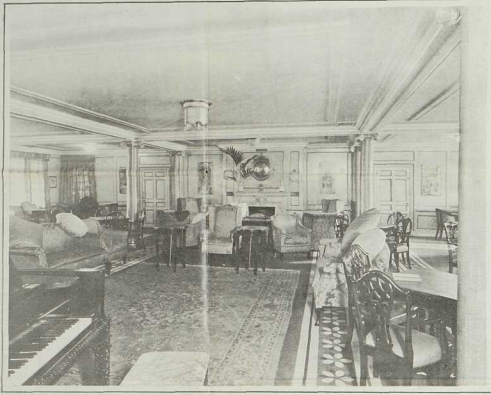


Plans and Views of
Canadian Pacific

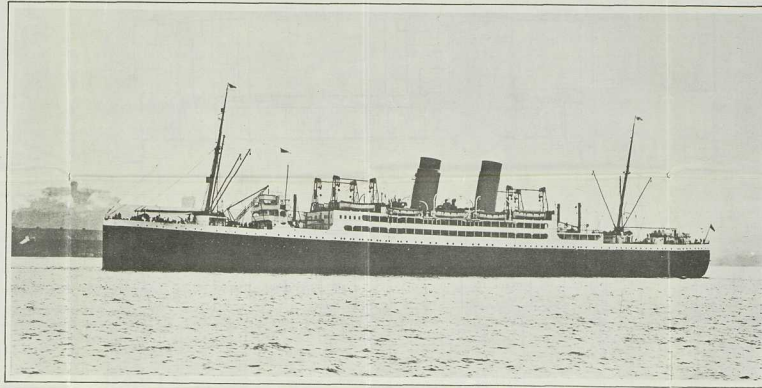
MINNEDOSA

TWIN RECIPROCATING & SINGLE TURBINE ENGINES. TRIPLE SCREWS. GROSS REGISTER, 15,200 TONS.
 LENGTH, 546 FEET; BREADTH, 67 FEET; SPEED, 16 KNOTS. DISPLACEMENT TONNAGE, 21,000.

SEE OTHER SIDE FOR PLAN OF SHIP



MINNEDOSA, CABIN LOUNGE.



MINNEDOSA, DRAWING ROOM.



MINNEDOSA, CABIN SMOKE ROOM.



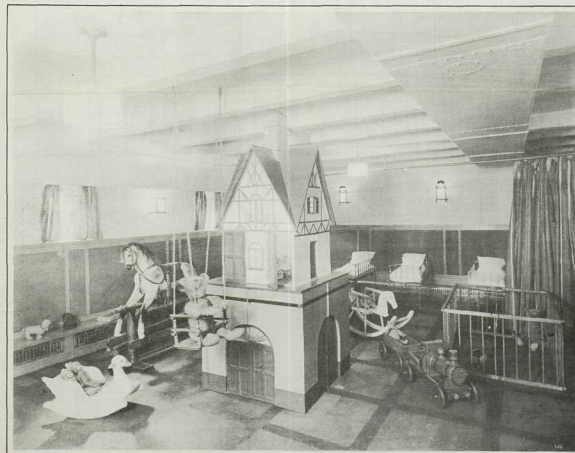
MINNEDOSA, CABIN DINING SALOON.



MINNEDOSA, CARD ROOM.



MINNEDOSA, THIRD-CLASS LOUNGE.



MINNEDOSA, TOURIST THIRD CABIN NURSERY.



MINNEDOSA TOURIST THIRD CABIN LOUNGE.