

THE NEWS WILL KEEP
YOU POSTED ON THE
DEVELOPMENT OF THE
MINES --- \$5 THE YEAR

PORTLAND CANAL NEWS

Devoted to the Interests of the Mining Districts of Northwestern British Columbia

SEND THIS COPY TO
YOUR FRIEND WHO
WANTS INFORMATION
ABOUT THIS DISTRICT

VOL. 1, NO. 12

STEWART, B. C., AUG. 15, 1919

\$5 the year—10 ¢ the Copy

DEVELOPMENTS IN THE SALMON RIVER SECTION

Wagon Road to Premier Mine Being Rushed to Completion—Can Freight Now Far as Nine Mile.

Diamond Drill will Commence Holes in Big Missouri Next Week—Outfit Now Going up the Long Hill.

Practically Every Working Property Encounters High Grade Ore—Clothier's Latest Report is Glowing.

RAPID progress is noted along the Salmon River wagon road. Gangs are working both ways from the Five Mile and Nine Mile camps. The Five Mile crew will complete its section and move up to Eleven Mile in ten days, according to present orders. The road is being built by the Premier Mining Co. under personal supervision of R.K. Neill, vice president, who says he wants the road to Eleven Mile completed in two weeks and the crews between Nine and Eleven, which is mostly rock work, are shooting and grading at top speed.

Nine Mile house is the transfer point at present for freight bound for the Premier, Bush, International and Spider, and farther along for the Big Missouri, Mineral Hill, Payroll, Forty Nine and others. At this point a great amount of freight has been wagoned-in to be packed up the hill.

A new roadhouse has been established at Nine Mile by P. S. Stump. Heretofore there had been no accommodation between Five and Eleven Mile.

Eleven Mile is showing signs of a boom as a future townsite and large development is expected there in the Spring. Ten men are permanent boarders at the roadhouse, some packing and some building cabins under contract.

Premier Mine.

While operations are continuing at the mine, the force is not large as the main efforts at present are concentrated on the wagon road so as to have in condition as soon as possible to haul in compressor machinery and to ship ore. It is said that some \$200,000 worth of ore, put on the dump in the course of development work, is ready to be shipped over the snow this winter.

Bush Mines, Ltd.

This group comprises thirteen claims and adjoins the Premier on the northeast. Active mining has been going on for some weeks following the establishment of a permanent camp. Some fine looking ore has been found on the surface and has been traced a long distance. Native silver is scattered through the ore in places. It is expected this company will make a trial smelter shipment early this winter. The group was located by Grant Mahood of Stewart in 1910.

Big Missouri.

Under the direction of P. Hanley, diamond drill operations will begin on the Big Missouri in a day or two. The contract for this work has been let to Boyle Bros. who have put more than a hundred thousand feet of holes on the property of the Granby at Anyox. The Big Missouri is under bond to Sir Donald Mann, head of the Pacific Coast Exploration Co. Sir Donald was here a few weeks ago and after a personal examination of the Big Missouri lost no time in arranging to diamond-drill the property. Sir Donald is expected here again soon.

The Big Missouri is practically a hill ore so far as surface indications go. The ore has depth—and the diamond drill core will show—the Big Missouri will be a tremendous mine. On the other hand, claims of the group there

BIG WHARF FOR HYDER

Work is to begin immediately on a new wharf at Hyder. It will be built out from the end of Premier avenue. The approach is to be 2100 feet long. F. J. Cotter, an engineer, is in Hyder now getting ready for work to commence. The intention is to build the wharf far enough out to get deep water for all boats. Announcement of the wharf plans has caused quite a boom in lot sales on the Lindeborg addition to Hyder.

are 25 open cuts, all in high grade silver ore similar to the Premier. There appears to be a great deal of low-grade complex ore as well and the successful treatment of this will mean added greatness to the Big Missouri. The development is in charge of Chas. F. Sturtevant, E.M.

International Group.

The International group is owned by Pat Daly and associates. There are eight claims situated about two miles northeast of 11 Mile and just at the British Columbia side of the boundary line. A good trail has been built to the property. The showing consists of a band or vein of silicified greenstone, between 8 and 10 feet wide, lying in a dark green schist. The vein dips 63 deg. to the west and has a strike of N 20 deg. E. Throughout the vein are small veins of pure quartz running in all directions, the whole filling mineralized with iron pyrites. As a general rule in these veins the best values are carried in the purer quartz portions. The government engineer says the showing is strong and well defined and there is no reason why it should not persist in length and depth. The property is well located and supplied with timber and water.

Mineral Hill.

On the Mineral Hill group of four claims development is proceeding under the superintendence of Al Harris. The group was bonded by R. W. Martin and Dr. Carter to P. Welch and associates. A large amount of work has been done and good camps established. Some high grade ore has been encountered in the tunnel which is being driven to get depth under the surface showings where high grade ore has been exposed by numerous cuts. Of this property the government engineer says: "From all indications there is every reason to believe this property will develop into an important producer of high grade silver ore."

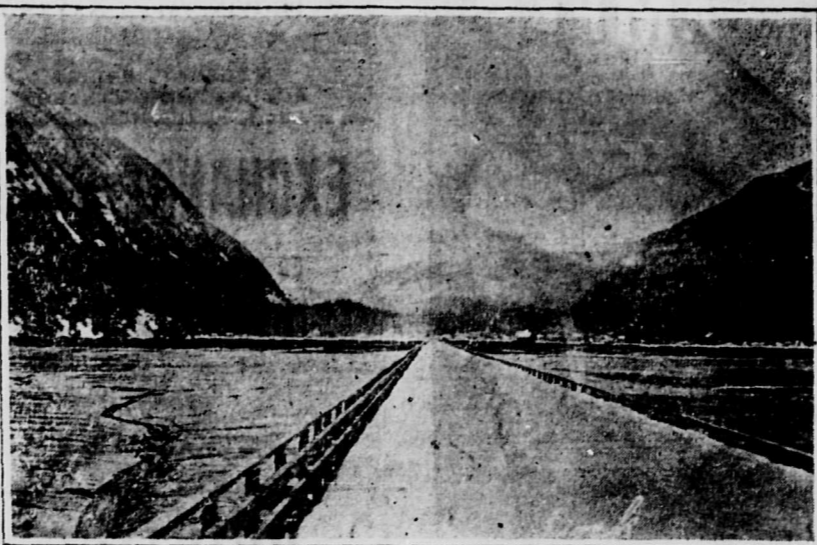
Forty-Nine.

This group has two claims, the 49 and Occidental. They were located by Lindeborg Bros. and are being operated by the Forty Nine Mining Co. A good camp has been established and present work is in a tunnel which has been driven approximately 30 feet. Several open cuts expose veins containing high silver values. It is admitted by everybody who has seen this showing that the Forty Nine is a great property. It is under the management of Harry Howson and operations are under the superintendence of Harry Tanner. The old showings are on the extension of the Yellowstone vein. Several open cuts were put in farther up the hill from the old cut, exposing two new veins. Another cut southwest of the old one exposed a vein 20 feet wide.

Payroll Group.

This group of two claims lies south of the Big Missouri group on the Missouri Ridge which extends north from the junction of Salmon River with Cascade Creek. The showing is a quartz vein, carrying pyrite and galena opened up by several cuts and a crosscut tunnel on the north end of the vein, at the edge of the gulch formed by No Name creek. The vein is traced on the surface for more than 1000 feet. The group is owned by W. Murphy and is under management of G. L. Thompson, E.M.

Wharf Approach Which Needs Repairing.



HERE is a picture of the long approach to the Stewart wharf. The approach is an orphan. It needs repairing badly but neither Dominion nor Provincial Governments seem to want to do the job nor even father the lonely structure. This picture was taken in the Spring and the snow hides the holes. Until repairs are made the structure is a danger to traffic.

NEWS OFF THE WIRE

VANCOUVER, Aug. 15.—Longshoremen, electrical workers, shipyard workers and numerous small unions have repudiated the One Big Union. The movement seems on its last legs.

St. JOHNS, Aug. 15.—The Prince of Wales landed from the battle cruiser Dragon today.

OTTAWA, Aug. 15.—Sir Arthur Currie will be given a portfolio in the cabinet if he wishes to enter politics, or may be may be inspector-general.

SYDNEY, N.S.W., Aug. 15.—After a two months' fight striking sailors win demands and strike is ended.

LONDON, Aug. 15.—British labor is again assuming a threatening tone. Miners in Yorkshire are still out. A three-day general strike is planned to aid policemen.

Great Fishing up Salmon River.

The new Salmon River road has drawn considerable travel in the past two weeks. The spawning salmon in

Fish Creek, close to Five Mile camp, are thicker than the flies, and thousands of choice salmon trout have been taken by the visiting parties. After work hours the men at the camp delight in helping the anglers stock their baskets.

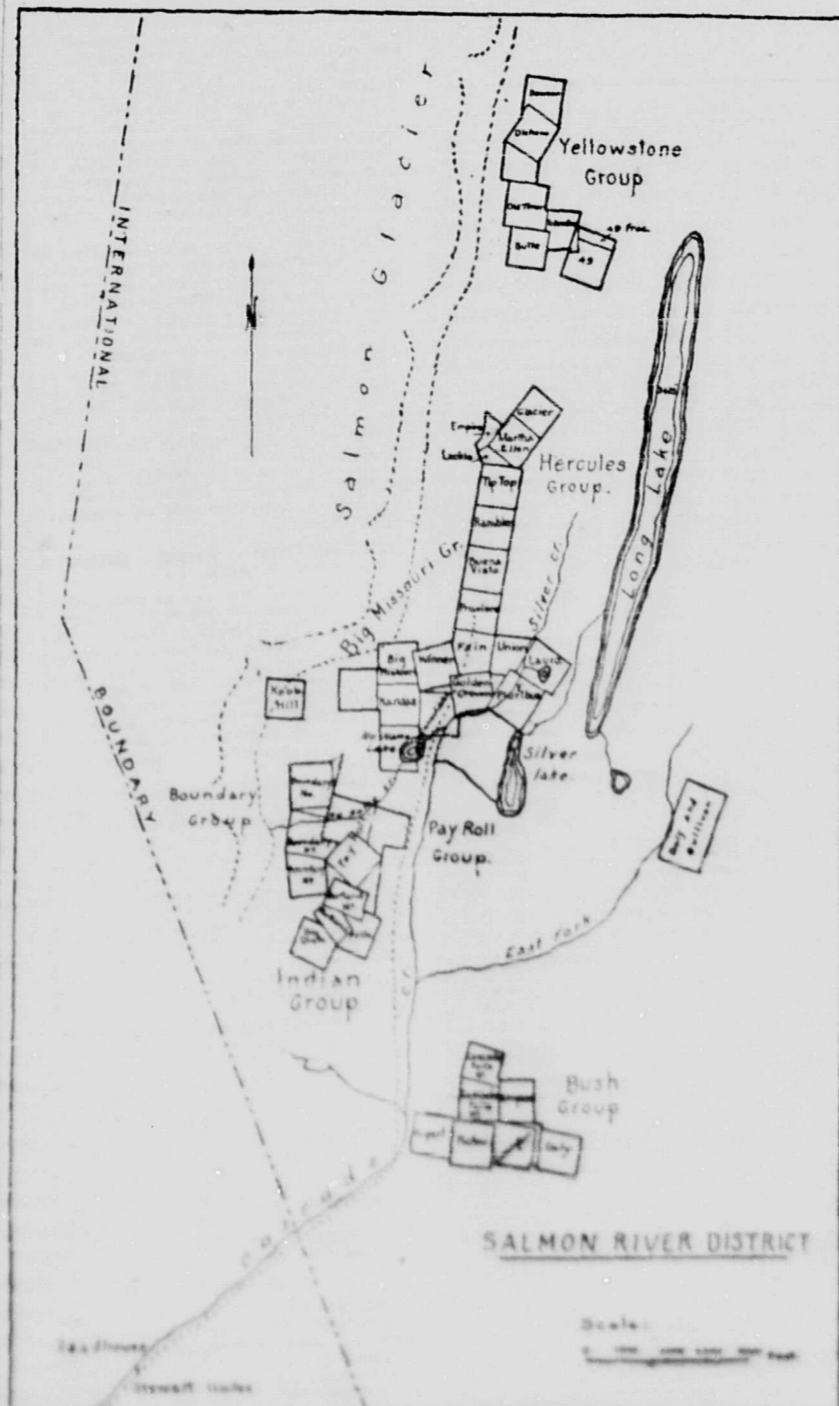
Illiance Trail.

Work on the Illiance River trail, in the Alice Arm section, is proceeding. Approximately \$10,000 will be expended. The trail will greatly assist development of the valuable properties in that section.

Surveys at Forty Nine.

Dalby B. Morkill who recently completed a survey of the property of the Bush Mines, Ltd. went up to the Forty Nine this week and will survey that property.

Sketch of Some of Salmon River Properties.



IT SHOULD be noted in reviewing this map that what is shown as the Bush is now the Premier mine.

BLOW UP BEAR AT FIVE-MILE

Bears at Five Mile camp on the Salmon River road were frequent visitors until last Monday. After fishing the creek they would scavenge their dessert at the camp garbage can. A half dozen paid daily visits to the camp and the smaller fellows ate from the hands of the cook. A 500-pound red bear arrived a few days ago and proceeded to take possession of the camp. He reared and snapped as he went about with a side of bacon in one hand and a fresh loaf of bread in the other, and refused to vacate the trail. Nine sticks of 60 percent in the garbage can, with a battery connection, caused his demise on Monday.

CITIZENS NOW WELL ORGANIZED

Last Monday night the Citizens Association was permanently organized at an enthusiastic meeting. H. P. Gibson was the unanimous choice for president. In Reg Macfarland a secretary was elected who already has proved his devotion to the work.

The following executive committee was elected, William Noble, Grant Mahood, Roy Clothier, W. B. George, Ben Lawrence and J. Cullins.

The committee has been divided into sub-committees. One of these committees has drafted a constitution which will be submitted to the meeting of the association for adoption.

An invitation was extended to Lt. Col. Cy Peck, M.P. for this constituency, to pay Stewart a visit.

Comes from Far North.

Hearing about the remarkable ore showings of the Portland Canal district L. P. Lindsay who for eight years conducted a trading post some 300 miles north of Nome, arrived here on Sunday's boat. He is looking for a location and plans to go into business, probably at Hyder or farther up Salmon River.

Married in Prince Rupert.

Thomas Shackleton and Miss Nellie Goodwood of Alice Arm were quietly married in Prince Rupert last Wednesday. Only a few intimate friends of the couple were present. They will make their home at Alice Arm where Mr. Shackleton is the owner of some valuable mineral claims.

Silvermans Depart.

After spending some ten days here, during which time he examined the Bush, Forty Nine and other properties in which he is interested, Sam I. Silverman, and his son, Lt. Silas P. Silverman, left for the outside on Sunday.

Guess Goes South.

H. A. Guess, general manager of the American Smelting and Refining Co., after making an examination of properties in this district in company with a staff of engineers, left for the south on Sunday.

Will Buy More Horses.

D. J. Hancock, of the United Metals Co., operating in the Alice Arm section, has gone to Vancouver to purchase horses.

Those who had articles at Mrs. McCracken's laundry, and who have not received them, may get them at Mrs. Erickson's.

Hear the latest music at Tooth's Smoke Shop.

Mrs. J. Cullins and daughter arrived from Vancouver on Sunday.

SPOKANE MEN START WORK ON LAKEVIEW

Well Known Property on Glacier Creek Passes into Spokane Hands—Ed Ehrenberg Directs Operations.

Has Good Showing of High Grade Silver Ore—A Smelter Shipment Gave Very Good Return.

Force of Six Men Now Working to Open Property up—Lakeview Has Always Been Considered Likely Mine.

A Spokane and Coeur d'Alene syndicate, represented by Ed Ehrenberg, E. M., began work on the Lakeview group, Glacier Creek, this week. A small force is now making camp and preparing for development. Albert Johnson has been engaged as foreman.

The Lakeview has been considered a promising property for years. There are four claims in the group which is situated on the north fork of Glacier Creek about two and a half miles from Bear River. McKay & Bibeau are the owners.

An open cut 80 feet long gives 12 feet depth on the vein which has then been drifted on. A shipment was made from this drift and the ore assayed as high as 300 oz. The vein on the surface is nine feet wide. A tunnel was driven to get depth but this was discontinued.

EXPLORING IN NEW GROUND

The extensive staking of mineral claims up Salmon River has been the cause of exploration beyond the old locations, resulting in the discovery of most promising ground on the Naas slope and across the glacier from the Big Missouri. Thornton & Creelman and others are working in the new territory and some excellent samples of ore of the prevailing character have been brought in.

Across from the Missouri cabin A. W. Balzimar and Patrick McBride have made important discoveries. In one place they have located a big copper showing and also some claims on a lead which has the same surface indications as prevail farther down Salmon River. Some splendid looking ore has been brought in by them.

Frizzell Market Open.

George J. Frizzell of Prince Rupert who has been operating meat establishments in the north country for the past 21 years, opened a shop in Stewart this week. Mr. Frizzell himself spent several days here to see that things got going right. The shop is in charge of F. Reichenbach, formerly of Prince Rupert.

Mr. and Mrs. Will A. Barnes of the staff of the Vancouver Daily Province, spent the week here as guests of the Portland Canal News. Mr. Barnes visited the leading properties of the Salmon River section and intends to write a series of articles on his experiences and what he saw. He says Fish Creek is one of the finest trout streams he ever saw. He got as many trout in an hour as he could carry.

O. H. Bush returned from the south on Sunday's boat.

Mrs. Peter Annance of Vancouver, accompanied by her son, Louis, joined Mr. Annance here on Sunday.

J. B. Henderson of Anyox was a visitor here the past few days and bought in on a group of Salmon River claims.

Continued on Page Two.

PORTLAND CANAL NEWS

JAMES CULLINS - - - Publisher

A newspaper published in the interests of the Salmon River, Portland Canal, Alice Arm and Anyox mining districts.

Subscription Five Dollars a year

Advertising Rates:
Display advertising, 50c per inch per issue.
Reading notices, 25c per line.
Long time contracts special rates as follows: one year, 30c per inch; six months, 40c per inch.
Time contracts on reading notices 20 percent discount.
Special position display or reading, 25 percent above ordinary run of rates.
Certificate of Improvement \$15 (if more than one claim, \$2.50 for each additional claim mentioned.)
Land notices, \$7.
Coal notices, \$5.
No advertising accepted for First Page.

STEWART, B. C., AUG. 15, 1919

The Citizens' Association has been permanently organized after some delay and officers have been elected. This body will represent the whole of the town and have regular public meetings at which all who join will have a voice. Its functions will be that of an unofficial council. It will make up sub-committees to look after such matters as sanitation, fire and police, streets, etc. Such a body is very valuable to an unorganized town. No matter how responsible a man may be, he can accomplish but little as an individual. The Citizens' Association, when it decides to tackle anything in the way of public improvement, or betterment, will do so as the whole town. The influence of such a body, especially with politicians and governments, receives attention whereas all the individual urging from a place like this would most likely find place in the musty files with the big assortment of axes to grind.

The members of the executive committee, more often called the Citizens Committee, is undertaking something which means a lot of work. And their reward may be in the knowledge that the general public appreciates them for their public spirit. This may seem a small reward, in these mercenary days, but when all is said and done there is no greater.

Much is to be done by this committee. The matter of a new wharf seems well along. Tenders are to be opened this month. But the approach to the wharf is still an eye-sore and no effort apparently has been made to put it in good shape. There is a controversy over the ownership of it. While the governments are deciding which one shall father this lonely orphan, the planking continues to break up and pedestrians have to watch out for broken legs and drivers exercise great care with their horses. This is a matter which the Citizens Committee will get busy on.

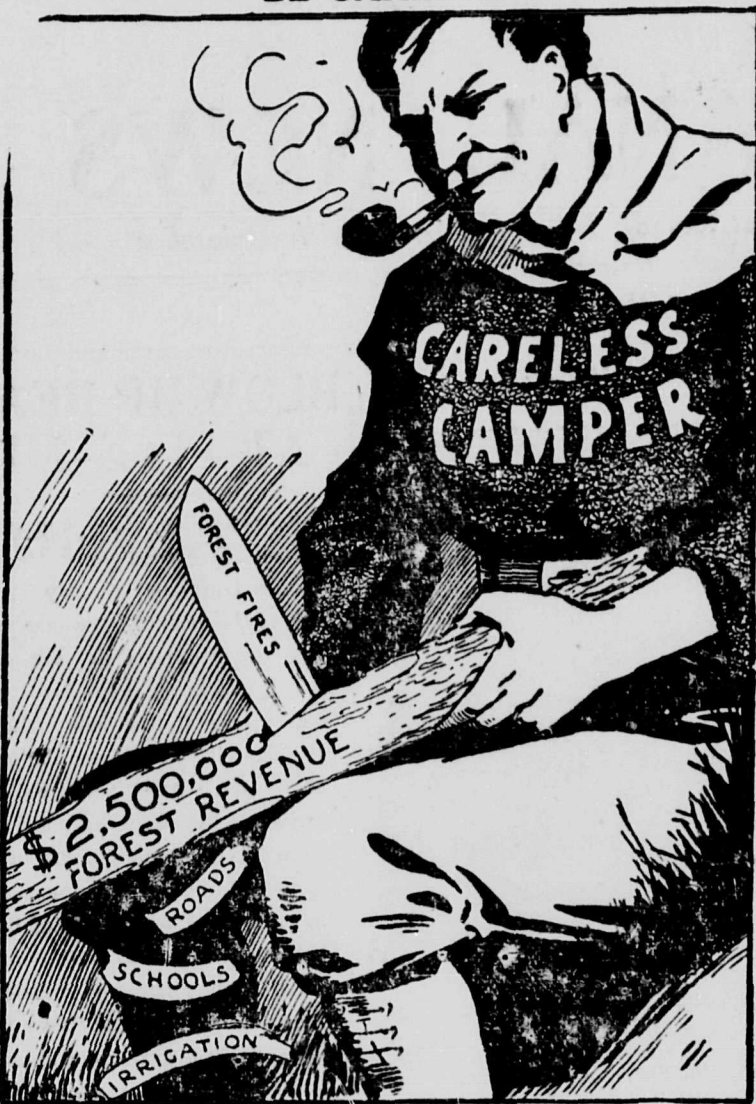
Then there is the reopening of the firehall, and sanitation and street-cleaning.

Politics did not enter into the formation of the Citizens Committee which represents not political parties, nor business cliques, but the town as a whole.

Preparations for the exhibition in Prince Rupert in September are well advanced. A feature is to be made of the mineral display. Many districts already have begun to arrange the displays they will send to the Northern Metropolis. People of Prince Rupert are looking forward to an exceptionally high grade display from this vicinity. The Bear River and Salmon River sections are capable of producing a marvelous ore display. This is true also of Marmot River and Georgia River sections. We should not disappoint Prince Rupert. Committees for the sections mentioned were appointed some time ago by the Portland Canal Prospectors' Association.

The Citizens Association has invited Col. Cy Peck, M.P., to visit this part of his constituency. A hearty welcome awaits him.

BE CAREFUL.



Save Forest Revenue to Develop B.C.

MINING NEWS UP TO DATE

If you desire to keep in touch with mining conditions in British Columbia and especially in the great northern part of the province, you will find **Portland Canal News** a valuable medium. The information is reliable and up to date, written carefully with a view to informing our readers as to the development that is taking place. The news is gathered from men in close touch with conditions. Fill in blank below:

PORTLAND CANAL NEWS

\$5.00 per Year.

PORTLAND CANAL NEWS,
STEWART, BRITISH COLUMBIA.

Enclosed find postal order for \$5, payment for one year's subscription

Name

Address

Date

DEVELOPMENT ON SALMON RIVER.
(Continued from Page One.)

Yellowstone Group.

This group consists of three claims—Yellowstone, Butte, and Old Timer—owned by Bill Murphy and the Stevenson Estate, and under bond to C. F. Caldwell and associate. The formation is the continuation of the Big Missouri and the mineralization identical. Development-work consists of seven open-cuts opening up a vein up to 20 feet in width.

Boundary Group.

Adjoining the Indian group on the north is the Boundary group, owned by D. J. McIntominey and under bond to the Granby Company. East of this group and adjoining the Indian on the north is the Payroll group, owned by Bill Murphy, on which assessment-work only has been done for the past three years.

Silver Tip.

This group is situated on the east bank of Silver creek near its head. The vein has been exposed by three open-cuts, showing about 8 inches of galena in a quartz vein which lies on a dip of 45 degrees. A tunnel has been driven 40 feet on the vein from Silver creek, 200 feet below the upper cut.

Hereules.

North of and adjoining the Big Missouri group is the property of the Hereules Mining Company, of Victoria, B. C. No work of any account has been done on the property for some time.

Indian Mines Co. Ltd.

This company owns four claims on the west side of Cascade creek, opposite the Bush claims, on the south end of Missouri ridge, between the Salmon River glacier and Cascade creek. The claims are Portland No. 1, Portland No. 2, Big Dick, and Fritz, and are Crown-granted. They are at an elevation of about 2,400 feet and fourteen miles from the water at Stewart. No work has been done on the property since 1912.

Development consists of three open-

cuts on the croppings and two tunnels. The open-cuts expose a vein from 12 to 20 feet in width, which can be followed on the surface to the end of the claims, about 2,000 feet. The vein is quartz and appears to follow a wide dioritic dyke which intrudes the greenstone-schists. The minerals included in the quartz are galena, sphalerite, and pyrites, in the order of importance mentioned. The first two open-cuts, going up the hill, show very little galena; the values are about \$10 a ton in gold and silver for a width of 12 feet. The upper or main open-cut discloses the vein for a width of 20 feet, of which 5 to 8 feet in the centre is solid galena, with the same amount of zinc and galena on the hanging wall, and the balance of the vein on the foot-wall of quartz and pyrites.

A tunnel has been driven about 150 feet vertically below and following the vein for a little over 400 feet, showing each of the ore-shoots exposed on the surface. The No. 1 shoot shows considerable galena at this depth, with quartz and pyrites predominating, and is about 35 feet in length. The No. 2 shoot is entirely of quartz and pyrites and will average about \$10 a ton, mainly in gold values. The No. 3 or main shoot, from the big cropping on the surface, was struck at about 400 feet in the tunnel and drifted on for 30 feet. The ore started from a seam on the foot-wall and has widened to 14 feet at the face, as exposed by two cross-cuts. Three sectional samples across the face averaged \$2.19 in gold, 3.5 oz. silver, 10 per cent. lead, and 16 per cent. zinc. The hanging-wall crosscut at the face is still in heavy zinc ore. Further work in driving this drift is very important, as the foot-wall portion of the vein, carrying the galena, is widening rapidly and has all the appearance of making into a good shoot of ore.

The lower tunnel, 150 feet below No. 1, has been driven about 60 feet on the vein, in which there is from 1 to 3 feet of good ore on the hanging wall. On the upper end of the claims there is a pinch seam of ore on the hanging wall assaying as high as \$120 a ton in gold. There is a good cabin and a good outfit of all necessary tools, with a car and rails in the upper tunnel.

P. A. JENNS

ASSAYER and CIVIL ENGINEER

HYDER, ALASKA

Gold and Silver, \$2.75

Copper, \$1.50

Lead, \$1.50

PROVINCIAL ASSAYER

D. R. WILLEMAR

Assayer to the Silver Standard Mine

NEW HAZELTON, B. C.

J. R. WILLIAMS

PROVINCIAL ASSAYER

540 Thurlow street - - Vancouver, B.C.

MODERATE PRICES
ACCURACY GUARANTEED

EXCHANGE GRILL

ED HERMAN, PROPRIETOR

Gus George's former place.

STEWART, B.C.

PRINTING

You do not have to send away to have your printing done. The Cassiar News job office is prepared to turn out all the ordinary work on short notice at very reasonable prices.

Synopsis of

Land Act Amendments

Minimum price of first-class land reduced to \$5 an acre; second-class to \$2.50 an acre.

Pre-emption now confined to surveyed lands only.

Records will be granted covering only land suitable for agricultural purposes and which is non-timber land.

Partnership pre-emption abolished, but parties of not more than four may arrange for adjacent pre-emptions with joint residence, but each making necessary improvements on respective claims.

Pre-emptors must occupy claims for five years and make improvements to value of \$10 per acre, including clearing and cultivation of at least 5 acres, before receiving Crown Grant.

Where pre-emptor in occupation not less than 3 years, and has made proportionate improvements, he may, because of ill-health, or other cause, be granted intermediate certificate of improvement and transfer his claim.

Records without permanent residence may be issued, provided applicant makes improvements to extent of \$200 per annum and records same each year. Failure to make improvements or record same will operate as forfeiture. Title cannot be obtained in less than 5 years, and improvements of \$10.00 per acre, including 5 acres cleared and cultivated, and residence of at least 2 years are required.

Pre-emptor holding Crown grant may record another pre-emption, if he requires land in conjunction with his farm, without actual occupation, provided statutory improvements made and residence maintained on Crown granted land.

Unsurveyed areas, not exceeding 20 acres, may be leased as homesteads; title to be obtained after fulfilling residential and improvement conditions. For grazing and industrial purposes areas exceeding 640 acres may be leased by one person or company.

Mill, factory or industrial sites on timber land not exceeding 40 acres may be purchased; conditions include payment of stumpage.

Natural hay meadows inaccessible by existing roads may be purchased conditional upon construction of a road to them. Rebate of one-half of cost of road, not exceeding half of purchase price, is made.

PRE-EMPTORS' FREE GRANTS ACT.

The scope of this Act is enlarged to include all persons joining and surviving with His Majesty's Forces. The time within which the heirs or devisees of a deceased pre-emptor may apply for title under this Act is extended from for one year from the death of such person, as formerly, until one year after the conclusion of the present war. This privilege is also made retroactive.

No fees relating to pre-emptions are due or payable by soldiers on pre-emptions recorded after June 25, 1915. Taxes are remitted for five years.

Provision for return of moneys accrued, due and been paid since August 4, 1914, on account of payments, fees or taxes on soldiers' pre-emptions. Interest on agreements to purchase town or city lots held by members of Allied Forces, or dependents, acquired direct or indirect, remitted from valuation to March 31, 1920.

SUB-PURCHASERS OF CROWN LANDS.

Provision made for issuance of Crown grants to sub-purchasers of Crown Lands, acquiring rights from purchasers who failed to complete purchase, involving forfeiture, on fulfilment of conditions of purchase, interest and taxes. Where sub-purchasers do not claim whole of original parcel, purchase price due and taxes may be distributed proportionately over whole area. Applications must be made up May 1, 1920.

GRAZING.

Grazing Act, 1915, for systematic development of livestock industry provides for grazing districts and range administration under Commission. A system of grazing permits issued based on number of animals, priority for established owners. Stock-owners may form Associations for range management. Free, or partially free, permits for settlers, members of travellers, up to ten head.

D. J. MATHESON

NOTARY PUBLIC

Represents strongest Insurance companies in the world---FIRE, LIFE, ACCIDENT

Stewart B. C.

For information relating to Salmon River, Portland Canal and Alice Arm mining districts, apply to

O. B. BUSH

Mining Broker

VANCOUVER and STEWART

STEWART NEWS STORE

Newspapers
Magazines
Books
Fancy Candies, Etc.

H. P. GIBSON, PROP.

STEWART, B. C.

DALBY B. MORKILL

MINING SURVEYOR

B. C. Land Surveyor

STEWART, B. C.

W. D. MACKAY

British Columbia Land Surveyor

STEWART, B.C.

CANADIAN WATER WHEEL CO.

JOHN KINCAID, Manager

Manufacturers of the famous

KINCAID WATER WHEELS AND GOVERNORS

An old style wheel with all the latest improvements (Patented)

Office and Factory, INDUSTRIAL ISLAND,

Vancouver, B.C.

STEWART DRUG STORE

is now open for business with a complete stock of

TOILET ARTICLES, PERFUMES, PATENT MEDICINES, STATIONERY AND FRESH CONFECTIONERY

PRESCRIPTIONS ACCURATELY DISPENSED

Try our Mosquito Oil, guaranteed to prevent insect bites

Call and see our stock.

Fifth Street

STEWART, B. C.

WESTMINSTER IRON WORKS

JOHN REID, Proprietor

ORE CARS, TRUCKS, ORE BUCKETS,
PLATE WORK, PATTERNS, FORGINGS,
SMOKESTACKS, ETC.

Office and Plant - - Tenth St.

New Westminster, B.C.

FROM OTHER CAMPS.

The site for the big reduction works to be erected by the Consolidated for reducing the ores of Rossland camp has not been definitely determined. The city of Rossland is considering a proposition from the company.

James Cronin was in Smithers a few days ago after a trip to the Babine Bonanza, which for the past several years he has been opening up. He has undertaken this year to drive a 1000-ft. tunnel which is now in more than 200 feet. When this tunnel has been finished the prospects are excellent that a big mine will have been opened up. Machinery will then be installed.

Experiments are under way at the Consolidated plant at Trail in the silver refinery with the object in view of treating the fumes from the Dore furnaces to recover the small particles of silver which have heretofore been carried away with the smoke and fumes. If the tests now being made demonstrate that the values now being lost will warrant it, an electrical smoke-treating plant will probably be installed at the refinery.

During 1918, 115 quartz locations were made in the Greenwood district.

Cunningham's concentrator at Alamo in the Slocan has a capacity of 150 tons in 24 hours.

An oil fuel smelter is to be built at San Diego, Cal., to smelt iron ore from Mexico. Later the company proposes to also smelt lead, copper and manganese ores.

When the power line gets to Camp McKinney it may be expected that considerable mining activity will start. The Consolidated owns many properties there.

Pat McGuire and Logan McPhee have leased the Ottawa near Slocan City.

Last year the Horn Silver near Keremeos shipped 19 cars of ore.

For the first three months of this year the province of Ontario produced metals valued at \$10,182,000.

Last year in the Grand Forks mining district 103 quartz claims were located. In the Nelson district 277 claims were located.

Quite a large number of men are reported to be prospecting for platinum at Granite Creek.

Write or see secretary of Portland Canal Prospectors' Association for reliable information on mining prospects, camp conditions, etc., Salmon River and Bear River districts. Prospectors are invited to exhibit their ore in show room. Dues \$5 a year. tf

FOR SALE—Twenty 160-acre claims of timber, red and yellow fir and sugar pine, cruised 170 million feet B.M.; ten miles of railway, four miles of river. Can be bought for \$1 per thousand. Land goes with it. Timber all in one body. This is the finest body of timber in Southern Oregon. Enquire Cassiar News office.

MINERAL ACT. CERTIFICATE OF IMPROVEMENTS. NOTICE.

Unum Fraction, Union Fraction, Win Fraction, J. P. Fraction, G. T. Fraction, Falls View Mineral Claims, situate in the Portland Canal Mining Division of Cassiar District.

Where located:—On the upper Salmon River Valley.

Take notice that I, William Noble, F.M.C. No. 16396-C, acting as agent for Daniel Lindeborg, F.M.C. No. 25358-C; Andrew Lindeborg, F.M.C. No. 25357-C; Laura McEwan, executrix of the Hiram Stevenson estate; and Duncan Cameron Barbrick, F.M.C. No. 32251-C, intend, sixty days from the date hereof, to apply to the Mining Recorder for a certificate of improvements, for the purpose of obtaining a Crown Grant of the above claims.

And further take notice that action, under section 85, must be commenced before the issue of such Certificate of Improvements.

Dated this 28th day of July, A.D. 1919.
10-21

San Francisco men have a bond on 75 claims in Aspen Grove, owned by John Bate and others. Diamond drilling will commence this season.

The bed of Boulder Creek, near Fort Steele, is being dredged for gold.

Three watchmen comprise the present force at the once busy smelter at Greenwood.

Work is to be resumed on the big carbonate reef at Jerome, Ariz.

Bob Stevenson and others have bonded a group of claims at Summit Camp near Princeton, to A. E. Hepburn of Vancouver.

An Ainsworth syndicate is working the Fourth of July at Coffee Creek.

PRINTING

YOU do not have to send away to have your printing done. The Cassiar News job office is prepared to turn out all the ordinary work on short notice at very reasonable prices.

**TOOTH'S
SMOKE
SHOP**

WILLIAM REID TOOTH, Proprietor

Soft drinks Solo Tables

Boys have your mail sent to P.O. box 45

STEWART, B. C.

JOHN HOVLAND

ASSAYER

HYDER, ALASKA

**PORTLAND
CAFE**

HYDER, ALASKA

OPEN ALL NIGHT

J. COLLIER, Proprietor

Whilst in ALICE ARM go to

**KITSALT
HOUSE**

Good Beds. Barber Shop and Baths

Home of the Prospector

DUMAS & ROBINSON, Proprietors

HYDER JITNEY

Rates

\$5 a ton, wharf to Hyder
Over ton, \$4 per ton
Parcels, 25c
Small freight at rate of
50c a hundred.

Passenger fare, 50c

Blacky & Lambert

**JOB
PRINTING****NEWS OFFICE****STEWART LAND
COMPANY, LTD.**

ROBERT M. STEWART, President

**REAL ESTATE, INSURANCE, MINES
FINANCIAL AGENTS**

Head Office, 101 Pemberton Block, Victoria, B.C.

WANTED: LISTINGS OF PROPERTIES FOR SALE OR LEASE
STEWART LAND CO., Ltd. Fifth St., STEWART, B.C.

JOHN MELLOR**---GENERAL MERCHANDISE---**

Direct importer of Groceries, Men's Furnishings, Clothing, Boots and Shoes, Rubber Goods, Miners' Supplies, Hardware, Tobacco, etc.

P.O. BOX 95

Stewart, B.C.

**Railway and
Steamship Lines**

Steamers sailing between Seattle, Victoria, Vancouver, Ocean Falls, Swanson's Bay, Prince Rupert, Anyox, Stewart and Queen Charlotte Islands.

—SAILING from PRINCE RUPERT—

THURSDAY AND SUNDAY MIDNIGHT for SWANSON BAY, OCEAN FALLS, VANCOUVER, VICTORIA and SEATTLE

WEDNESDAY AND SATURDAY MIDNIGHT FOR ANYOX

FROM STEWART, AUG. 10, 15, 24, 29, SEPT. 7, 12, 21, 26.

Arrive Prince Rupert from the South at 10:30 every Wednesday and Saturday

Train Service:

Passenger MONDAY, WEDNESDAY and SATURDAY at 11:30 for Smithers, Prince George, Edmonton and Winnipeg, making direct connections for all points East and South.

For further information apply to any Grand Trunk Pacific agent or to G. A. McNicholl, Asst. Genl. Freight and Passenger Agent, Prince Rupert

When you have read The News

Mail the Paper to Somebody

You will thus be helping to spread the good word about the opportunities this part of British Columbia has to offer.

NOTICE TO TRADERS

GET PROMPT DELIVERY FROM STOCK IN PRINCE RUPERT

Everything in CANVAS and OILSKINS

TENTS, FLYS, AWNINGS of all sizes and descriptions.

COVERS---plain or waterproofed Duck for boats, sails, beds, wagons, merchandise.

DUCK---white or khaki in complete bolts or cut lengths.

BAGS and SACKS---dunnage, pack, ore, pack saddles.

CAMP FURNITURE---folding cots, mattresses, chairs, tables.

FLAGS and Burgees---all kinds, mounted and unmounted.

BAILEYS---duck, silk, cotton made to order. Every kind. Forty years' experience.

CLOTHING---oilskins and waterproof duck, the leading brands Towers, Raintest, Acquapelle, etc., for fishing, hunting, lumbering, etc.

SERVICE LIFE JACKETS, HOSE, WATERPROOF DRESSING

all the above kept in stock except sails

J.F. MAGUIRE, PRINCE RUPERT

District agent for

J. JONES & SON, LTD., everything in canvas and oilskins.
HAMILTON, CARHARTT, LTD., overalls and working gloves.
J. WELSH & CO., LTD., baggage of all kinds.
THORPE & CO., LTD., soft drinks, cider, syrups, etc.
and other well known manufacturers

Everything at the Manufacturers' List price, with usual discounts and terms
SAMPLES, PRICES, CATALOGUES, on application.

**BRITISH COLUMBIA
THE MINERAL PROVINCE OF WESTERN CANADA**

Has produced Minerals valued as follows: Placer Gold, \$75,436,108; Lode Gold, \$97,121,786; Silver, \$46,839,631; Lead, \$42,294,251; Copper, \$145,741,069; Other Metals (zinc, iron, etc.), \$13,929,817; Coal and Coke, \$187,147,652; Building Stone, Brick, Cement, etc., \$28,843,272, making its Mineral Production to the end of 1918 show an

AGGREGATE VALUE OF \$637,353,581

The substantial progress of the Mining Industry in this Province is strikingly exhibited in the following figures, which show the value of production for successive five-year periods: For all years to 1895, inclusive, \$94,547,241; for five years, 1896-1900, \$57,605,967; for five years, 1901-1905, \$96,509,968; for five years, 1906-1910, \$125,534,474; for five years, 1911-1915, \$142,072,603; for the year 1916, \$42,290,462; for the year 1917, \$37,010,392; for the year 1918, \$41,782,474.

PRODUCTION DURING LAST TEN YEARS, \$313,976,022

Lode mining has only been in progress for about 20 years, and not 20 per cent. of the Province has been even prospected, 300,000 square miles of unexplored mineral-bearing land are open for Prospecting.

The mining laws of this Province are more liberal and the fees lower than those of any other Province in the Dominion, or any Colony in the British Empire.

Mineral locations are granted to discoverers for nominal fees.

Absolute Titles are obtained by developing such properties, security of which is guaranteed by Crown Grants. Full information, together with Mining Reports and Maps, may be obtained gratis by addressing

THE HON. THE MINISTER OF MINES, VICTORIA, British Columbia

DEAL ON MARMOT RIVER LOOKED FOR

Montana Bond Expected to be Taken up by Vancouver Capital — District Looks very Promising.

An announcement of importance to the Marmot River section especially, is looked forward to in the near future. It is understood that the bond on the Montana group, held by William V. Somerville and associates of Vancouver and Victoria, is to be taken up and development proceeded with. Mr. Somerville has gone to Vancouver to consult with his principals.

The Montana group is owned by H. C. Magee of Vancouver and George Bruggie of Alice Arm. At present Mr. Magee and two men are doing preliminary work under the instruction of the bondholders. A good-sized force may soon be working.

Mr. Magee on Tuesday brought in some exceptionally fine looking ore from the Montana. It shows native silver in abundance. Fifty pounds of the average ore will be shipped south on the next boat for display purposes and will probably be seen at the Vancouver Exhibition in September.

The late discovery on the Horseshoe claim has been prospected further with the result that the ore looks better with every shot put into it. On another vein on the Montana assays as high as \$1900 to the ton have been obtained. The average value of the ore on which work has been done runs to a figure which would seem to assure profitable mining. The principal work on this group consists of an 80-foot tunnel and crosscut on the lead.

Considerable activity in Marmot River section has been noticed the past few weeks and a number of promising locations have been made. Among recent locations were several claims by A. Gilfillan of Vancouver and associates. The surface indications on this ground

Back of this Range Lies Famous Salmon River Valley.



is such as to warrant thorough exploration. The ore bodies where exposed have good showings. Mr. Gilfillan left for Vancouver last week.

J. A. Stamford, an engineer of Victoria, arrived here on the Sunday boat on his way to Marmot River to examine the Gilfillan property, and expects to be on the ground the latter part of this week.

Norman McLennan, an oldtimer of Stewart has returned, arriving from Alice Arm a few days ago.

GEORGE J. FRIZZELL

MEATS.....PROVISIONS

The same standard for Stewart as we have maintained for the past twenty-one years on the North Coast.

The Best Meats at the Lowest Prices

RUPERT BRAND HAMS AND BACON

HYDER, ALASKA

LINDBORG'S ADDITION NOW ON THE MARKET

Lots from \$100 up

Get in on the Ground Floor

Two ways to get into the famous Salmon River Country—By airplane and by Hyder. Full particulars about prices and terms may be had on the ground.

BUY NOW BEFORE PRICES ADVANCE

KING EDWARD HOTEL

R. G. MOSELEY, PROP.

Headquarters for Mining and Commerce of Portland Canal Salmon River and Bear River mining districts.

Grill in Connection

STEWART, B. C.

CREELMAN & THORNTON

GENERAL CONTRACTING

FREIGHTING

and

PACKING

STEWART, B. C.

HYDER, Alaska

Hotel Hyder

HYDER, ALASKA

M. R. JAMIESON, Prop.

GATEWAY TO SALMON RIVER

SNAPPY SIGNS

Painting in all its branches
Houses - - Modern Signs

C. W. CALHOUN

STEWART, B. C.

When you have read The News

MAIL THE PAPER TO SOMEBODY

You will thus be helping to spread the good word about the opportunities this part of British Columbia has to offer.

SALMON RIVER TRADING CO., Ltd.

Large shipments of our Deferred Orders from Seattle and Vancouver have Arrived in Stewart and Hyder and we can now Supply Anything Needed in the Camp.

Miners and Prospectors Supplies

Shovels, picks, hammers, handles, cross-cut saws, coal, steel, Powder, fuse, caps, candles, blowers, forges, bellows, wheel barrows, camp outfits, etc.

Gents' Furnishings of all Kinds

Boots and shoes, rubbers, rubber boots, working shirts and overalls, Mackinaws, sox, underwear, etc.

Builders' Requirements

Framing squares, try squares, hammers, saws, nails, roofing and building paper, levels, pumps, points and pipe, glass and Putty, windows, doors, hinges, paints.

Groceries

A new large shipment has arrived and can be supplied in any sized order at the right prices.

We want to get Everything from Soup to Nuts for the Camp and if we have overlooked Anything, you can give us some ideas and that is what we are looking for.

Patronize us. We are out to do business and give satisfaction. Consult us about any sized orders. Don't think of going out of the camp for supplies. We have the Goods.

TWO STORES

HYDER, ALASKA

J. V. CLEGG, Manager

STEWART, B.C.

A. N. PATERSON, Manager