

THE NEWS WILL KEEP
YOU POSTED ON THE
DEVELOPMENT OF THE
MINES—\$5.00 THE YEAR.

Portland Canal News

Devoted to the Interests of the Mining Districts of Northwestern B. C.

SEND THIS COPY TO
YOUR FRIEND WHO
WANTS INFORMATION
ABOUT THIS DISTRICT.

VOL. ONE. NO. 28.

STEWART, B. C., DECEMBER 5th, 1919

\$5.00 A YEAR. 10c A COPY

INTEREST IN STEWART DISTRICT NOW CENTRED ON HIGH GRADE ORES

District Cannot Fail to Be
One of First Importance
Says E. E. Campbell.

Final Results to Prospector
and Mine Operator Should
Be Manifest.

REGARDED among mining men as a field of first importance, the Stewart district of Northern British Columbia, yesterday was declared by E. E. Campbell, mine superintendent at Anyox, to be a field in which results to the prospector, mine operator and the province in general should be manifold. In his address before Mining Institute, Mr. Campbell said in part:

For the past year no part of British Columbia has demanded more interest from a prospective mineral producing standpoint than that tributary to Stewart. About 10 years ago this place was the centre of a noted mining boom, and although at that time several properties of decided merit were found the district was more or less discredited by the foolish exploitation of a few properties of questionable value.

The interest now being taken in mine development in the Stewart district is based on many valuable discoveries of high-grade ore, and these cover such a wide area that the district as a whole cannot fail to be one of first importance.

Only that portion of the Stewart mineral area situated on the Salmon River will be discussed in this paper, as it is in this part that many of the recent finds of rich ore have been made.

Well-Known Contention.

It has always been the opinion of geologists and engineers that the successful tenure of the mining industry in Northern British Columbia must depend upon the development of primary ores of comparatively low metal tenure.

Due to heavy glaciation most of the oxidized portions of the outcropping ore bodies have been removed; the same can be said of the surface-enriched zones, as few ore bodies on the north coast, on development, show definite evidences of surface enrichment.

The recent discovery of extensive ore bodies carrying minerals that are unquestionably of secondary origin, establishes a reversal of the conditions thought to exist, as well as a change in the opinion of mining engineers regarding the types of ore to be encountered in the district.

Prospecting for minerals in northern latitudes has never been carried on as enthusiastically as in the districts further south, such as in California, Arizona and Mexico, due to the lack of rich surface ores. In these southern climates no glacial erosion occurred at the time the northern portion of the hemisphere was enveloped in ice, which left that area free to the processes of oxidation and subsequent enrichment. This produced many rich surface ores which were eagerly sought for by the prospector, and when found could easily be turned to his credit.

Rich Ores Discovered.

The northern prospector generally had low-grade ore to deal with, the development of which usually entailed much capital, unless specially favored by location or other physical advantages.

The discovery of rich surface ores in the Stewart district has so stimulated prospecting that the final results to the prospector, mine operator and the province should be manifold, and such discoveries should be an incentive to the further examination of other districts and the uncovering of new ore bodies.

A large part of the Coast range of British Columbia and the adjacent portion of Southeastern Alaska, made up of granitic rocks. The vast bodies of granite masses, or



E. E. CAMPBELL
Mine manager

adjacent to, many scattered areas of sedimentary and numerous types of igneous rocks, and it is these areas flanking the granite mass that afford the greatest promise of reward to systematic prospecting. The Stewart mineral showings occur in one of these areas adjacent to the granite.

Of Granite Formation.

For the first five miles up the Salmon River from where it empties into the Portland Canal the country rock consists of granite. In contact with this is highly altered schist of apparently sedimentary origin. Beyond this is a vast area underlain by greenstone and tuffs, and it is in these rocks that the recent ore discoveries have been made. The greenstone, which is essentially a quartz porphyry, has been sheared and silicified in places, and it is in such zones that the ore occurs.

The greenstone in places is overlain by a volcanic breccia, varying in texture from fine to coarse grained. This rock is generally grayish to green in color, and shows the same alterations as those found in the quartz porphyry. Where is it fine-grained and changed to the color of the greenstone it is almost impossible to classify accurately in the field.

The greenstone, or altered quartz porphyry containing the ore are part of a series of rocks, called by Mr. McConnell the Bear River formation. These greenstones vary widely in appearance, ranging from light green and almost normal quartz porphyry to a dark green and highly altered product.

Mineralization is confined largely to the greenstones, and is only present to a minor degree in the breccia. On the Province claim of the Big Missouri group an enormous development of the primary ore replacing the greenstone is exposed. On the Yellowstone group the ore occurs altogether within the breccia.

Offers No Obstruction.

The Province outcrop covers an area on the surface of approximately 1,500 feet by 1,000 feet. The Yellowstone does not show such an area of mineralization as the breccia is not shattered or silicified to the same extent as the greenstone, and mineralization is confined to shear zones and fissures with much higher values. It is possible that this breccia layer is shallow, and that more extensive mineralization, with probable high-grade ore, is present in the underlying greenstone.

The primary ore in the district consists of disseminated sulphides in a schist gangue; sphalerite, galena, chalcopryite and pyrite, carrying gold and silver.

Provided a substantial tonnage of ore is developed, the district offers no obstruction to successful mine equipment and development. The mineral area is from 12 to 20 miles from tidewater, and no great difficulties to railway construction exist.

SUES FOR HALF OF PREMIER MINE

Plaintiff Alleges Property
Value Was Misrepresented
and Partner Took Possession.

SPOKANE, Wash., Dec. 4.—Suit for a half interest in the Premier mine, formerly the Bush, near Stewart, B.C., was filed in federal court here today by Maurice D. W. Bacon of Los Angeles, against R. K. Neill of Spokane. Bacon alleges that a partnership existed between him and Neill and that Neill misrepresented the value of the Bush mine, as it was called when their alleged partnership was in existence, and thus fraudulently obtained possession of the property.

Bacon charges that he loaned Neill a "grubstake" in June, 1916, whereby it was agreed that the two should share equally in any mining property taken over. It is alleged that Neill deceived Bacon as to the value of the Bush mine, as it was reported on by Neill to Bacon, and obtained it for himself.

Bacon formerly was in the mining business in Arizona and in the Northwest. He at one time was an associate of the late F. Augustus Heinz, of Butte, Mont. It recently was reported that 51 per cent. of the Premier mine, a gold-silver property, was sold to the American Smelting and Refining company by Neill and his associates, W. R. Wilson and Trites and Wood, of Fernie, B.C.

COL. LAMB LIKES BIG MISSOURI MINE

Highly pleased with the result of his examination of the work at the Big Missouri, Col. T. A. Lamb, friend of Sir Donald Mann, head of the syndicate owning the mine, has returned to Stewart. He was accompanied to the mine by William Noble, superintendent, who met him upon his arrival from the south.

Col. Lamb during the war served with the British army in Turkey. He has been interested in mining for a considerable time but says he never saw a section which pleased him so much as Salmon river. In the east much attention is being directed to Stewart, he says, and this is particularly true of Winnipeg.

MELLOCHE AFTER GEORGE GROUP

It is understood that W. A. Melloche, of New York, who spent the summer in this district as the representative of European capitalists, has obtained an option on the George Copper group, owned by W. B. George of Stewart and R. George of Vancouver. A report is that a diamond drill will be put to work on the group early in the spring. The deal, if consummated, would mean much to the district, it is figured, as there are other groups adjoining the George which could be worked advantageously at the same time.

NOTICE

As the Exchange Grill has been leased till February 15, Ed. Herman gives notice that until that date he is not responsible for debts contracted by the new grill management.

culties to railway construction exist. For an elevation up to 2,000 feet the hills are densely wooded with a good quality of spruce, hemlock and cedar. Many thousand horse-power, continuous throughout the year could be developed in Cascade Creek, which flows across the mineral area.

This district should prove of great attraction to the engineer. The ore is complex, and will require skill in its treatment. The rich ore can be smelted direct, but the low-grade offers a broad field for the exercise of the greatest ingenuity that the engineering profession affords.

SERVICE PROTESTED BY MAIL AND BOAT

Alleging that a fortnightly boat service on the part of the Grand Trunk Pacific, is against the best interests of the district, Charles F. Caldwell has wired the Stewart Citizens' Association that the matter is being investigated by Vancouver interests. The association met on Monday night and wired a protest to Ottawa both as regards the boat service and the poor mailservice.

It has been pointed out that, even though the freight and passenger business offering here during the winter is less than during the summer, the government, which controls the G. T. P., could well afford to provide a weekly service because of the encouragement it would give to developing of the mines of the district, thus producing revenue for the government.

DAN LINDEBERG IN LIMELIGHT

Dan and Andy Lindeberg, pioneers of Salmon River and locators of the Big Missouri and other properties, are now in Vancouver, and Dan is kept busy answering inquiries. Being so well known in the north country, it was not long till those who were interested in the Portland Canal found he was in Vancouver, and besieged him with inquiries as to the progress of operations. He found much interest displayed in the new town of Hyder, which is on his old homestead, and everything indicates that Hyder will be the next big stampede in Alaska.

INTEREST GREAT IN SALMON RIVER

Interest in the property of the B. C. Silver Mines, Ltd., is great in Vancouver. Shares in the newly organized company are much in demand. O. B. Bush and Grant Mahood are the principal owners, having obtained the ground from Charles Lake and Dave O'Leary. It is understood that development work will commence early in the spring, and the three high grade silver veins found on the property will be stripped and preparations made for mining. The group is situated between the Bush Limited and the Premier. O. B. Bush is now in Vancouver where he is kept busy answering inquiries as to the Salmon River district.

DEAL PENDING ON MOTHERLODE GROUP

It is understood that A. W. Balzimer and Patrick McBride, locators of the Motherlode group, situated across the glacier from the Big Missouri cabin, have made a deal and are turning the ground over to a development company. Some splendid ore was brought down from the property during the summer and it is understood to be the intention of the owners to commence development as early as possible. The fact that the ground is across the glacier appears to be an advantage rather than otherwise, for the problem of transportation is made easy because the glacier is dead and practically smooth.

Jack Monroe is spending the winter in Vancouver.

Interest In Portland Canal Manifested In Many Mining Centres

SNOW TOO DEEP TO START UNICORN

With the greatest reluctance, and only after a hard struggle, those who were trying to get supplies in to open up the work on the Unicorn group, beyond the Big Missouri, have given up the task. E. H. Terwilliger, representative of J. R. McDonald and associates who have the bond on the Unicorn, is leaving for the south again, very disappointed that the heavy snow was too much for all the endeavors made to get supplies in to start work at this season. Two weeks ago Mr. McDonald wired from New York urging that work be commenced at the Unicorn, the intention being to put a diamond drill on the ground at once.

Supplies were purchased and men sent ahead to break trail for the pack train. Not only had they the deep snow to contend with, but some dirty weather as well. The supplies were left at the camp of the Indian Mines, Ltd.

PREMIER ORE COMING DOWN

A record in ore transportation by teams is being made from the Premier mine to the beach at Hyder. Not only are the teams belonging to the Premier Mining Co. employed, but the teams belonging to the Bush Limited, Forty Nine and others are all on the job. It has been estimated that some 3000 tons will be shipped this winter. The roadbed is in excellent condition, by reason of the ground having frozen before the first snowfall. The weather has turned clear and cold. Difficulty in getting the engine of the snow tractor to work is still being experienced.

MASQUERADE WILL BRING OUT CROWD

Everybody in Stewart and Hyder is making preparations for the masquerade ball to be given on New Year's eve at the Stewart Town Hall under the auspices of the Citizens' Association. The affair will unquestionably be the biggest dance in point of attendance and success that the camp has ever seen. It goes without saying that some of the costumes will be the last work in ingenuity.

COMPLETE WORK ON ORE HIGHWAY

After months of hard work, the Stewart-Hyder ore road, which was built around the foot of a granite mountain by the Provincial government, is at last completed. Jitney teams will be put on next week. Among the first to go on with a regular transportation service will be Ivan Mahood, who since the heavy snow came, has been providing a fast service between the dock and Stewart.

Mr. and Mrs. H. C. Magee have gone to southern California for the winter. Mr. Magee is the pioneer of the Marmot river section.

Preparations Being Made in Southern Cities For Big Rush to Northern Mining Camps Early in the Spring —Eyes Centred on Stewart.

REPORTS from every part of the continent apparently indicate that the Portland Canal is the big mining attraction for next year. In Vancouver, Seattle, Portland and other coast cities, as well as the smaller communities in the northern part of British Columbia and Alaska, one hears the same stories about the prospects for a big mining camp at Stewart. In Vancouver the hotels are full of mining men who are ready to come to the Portland Canal as soon as the snow is off the hills. Many, however, will not wait till the snow is gone. Judges of the situation maintain that the rush northward will commence in February and continue all through the season.

For the information of those who have not been in this district before, it may be mentioned that it will be early summer before they can see much of the ground, for the snow comes early and stays late. However, as was the case in the early days of the camp, scores were on the ground weeks before the snow had gone, and as soon as they could they were out into the hills examining the various showings and the work done. That is about what is going to transpire this time.

And the Portland Canal district will not disappoint prospective investors this time, as it did in 1910 when there was little work done. Since the days of that boom development has progressed until today the district has more to show than the most optimistic friends of the district would care to say. During this winter several mining properties are operating and reports are that the work is proving the existence of some big mines.

In addition to the work which is going on, the Premier mine will ship steadily later in the season, and the returns from some 3000 tons of ore, which it is expected will be sent down the hill, will be more than surprising. Last winter the two shipments made from this property gave such large returns as to attract unusual attention. The returns this winter will no doubt be much larger.

STRIKE REPORTED ON NEW ALASKA

A report has reached Stewart that rich ore has been encountered in the crosscut tunnel in the New Alaska, on the Alaska side of the Salmon river boundary. The tunnel has been driven about 60 feet. The report has not been confirmed, as the contractors, McKenzie & Carlson, refuse to talk.

On account of the showing on this property, as well as others near it, much activity is looked for in the vicinity in the spring. It is reported that a company is in course of organization in Seattle to take over and operate a group adjoining the New Alaska. Bill McGrew and associates have refused a flattering offer for their claims near the New Alaska.

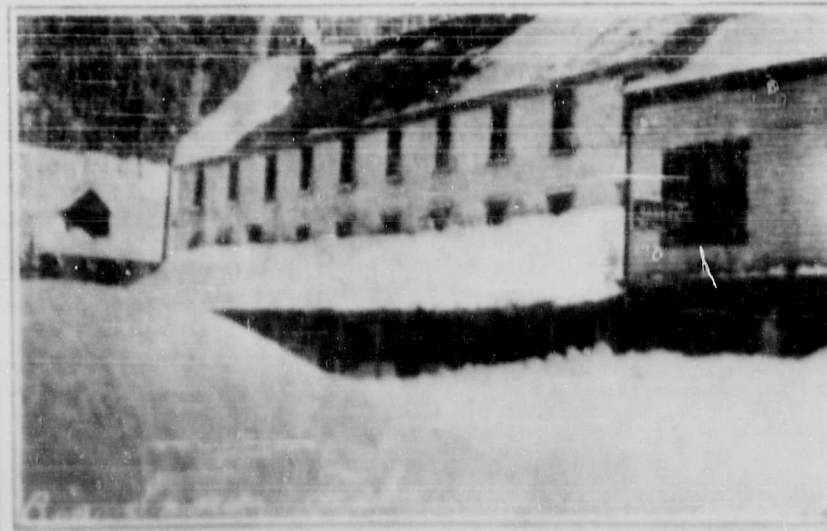
A. J. Thornton and Hugh Creelman, of the freighting and packing firm of Creelman & Thornton, are in Vancouver where they will spend the winter.

The Crawford brothers, Bill, Ernie and Jack, are in Vancouver, the packing season on Salmon river having come to an end.

Dan and Andy Lindeberg, locators of the Big Missouri and other properties, are in Vancouver on their way south. They will probably go to Honolulu.

H. P. Gibson is figuring on expanding his business early next season. Alongside his premises on Fifth street he has vacant property which if built upon, as he contemplates, will give him a large frontage.

Patrick McBride is wintering in Seattle.



How King Hotel Looks When the Snow is Deep

KING EDWARD HOTEL

R. G. MOSELEY, PROP.

Headquarters for Mining and Commerce of Portland Canal
Salmon River and Bear River mining districts.

Grill in Connection

STEWART, B. C.

Send to GEO. D. TITE, Prince Rupert

For anything in House Furnishings, Dining Room and Living Room
Furniture, Brass and iron beds, Springs and Mattresses all sizes in
Stock.

We carry the largest stock of Fancy Goods, and Toys, in northern B.C.
and can fill every requirement in these lines.

Ask for our prices on Community Ware. We stock only the best.

Window blinds and Drapery of every description. Ask for samples and
prices.

GEO. D. TITE
the Complete House Furnisher**WESTMINSTER IRON WORKS**

JOHN REID, Proprietor

**ORE CARS, TRUCKS, ORE BUCKETS,
PLATE WORK, PATTERNS, FORGINGS,
SMOKESTACKS, ETC.**

Office and Plant - - Tenth St. **New Westminster, B.C.****GEORGE J. FRIZZELL****MEATS.....PROVISIONS**

The same standard for Stewart as we have maintained for the past
twenty-one years on the North Coast.

The Best Meats at the Lowest Prices

RUPERT BRAND HAMS AND BACON

**This fine jewelry
store near home**

We want your name to send you
one of our new catalogues, so that
you may see what a splendid stock
we keep for a town of this size.

Many of the prices are extra special
because prices have advanced
since our catalogues were ordered,
and we will fill all orders sent in
from the catalogue at least till New
Years.

We will be personally responsible
for the quality of all goods sold and
will cheerfully refund the purchase
price if you are in any way dis-
satisfied, besides you have the
chance to drop in on us any time
you are in Rupert and have any
changes made.

We have carefully gone over our
prices and a glance will show you
that we are able to compete with
any order far or near.

We will also send you several
Souvenir post cards of Prince Rup-
ert.

BULGER'S JEWELRY STORE
Prince Rupert, B.C.
The Store of Worth and Beauty

Keep posted on mining news by
subscribing for the The News.

W. G. ANDERSON, B.A., L.L.B.
BARRISTER and SOLICITOR
601-603 VANCOUVER BLOCK
Vancouver, B. C.
References Bank of Nova Scotia

**Hotel
Hyder**

HYDER, ALASKA

M. R. JAMIESON, Prop.

GATEWAY TO SALMON RIVER

SOLVE FUEL QUESTION

ALL the hot water you can use within
30 minutes after you start the fire, by
using Harry Hanson's Patented Hot
water Heater. One hundred and sixty-
five are now in use in Prince Rupert
and fifty in the surrounding district.
Every user a booster. You don't know
hot water comforts until you have seen
these results. Twenty Dollars is the
cost and there is no charge if you are
not satisfied.

RESULTS will surprise and please
you. Wall radiators can also be run
from your hot water boiler and other
rooms heated with no extra cost of
fuel. Any coal range or cooking stove
can be fitted and the draught not inter-
fered with. Baking qualities of range
just as good. For particulars write

HARRY HANSON, THE RELIABLE PLUMBER
PRINCE RUPERT, B. C.

MINING NEWS UP TO DATE

If you desire to keep in touch with mining conditions in British
Columbia and especially in the great northern part of the province,
you will find **Portland Canal News** a valuable medium. The infor-
mation is reliable and up to date, written carefully with a view to
informing our readers as to the development that is taking place.
The news is gathered from men in close touch with conditions. Fill
in blank below:

PORTLAND CANAL NEWS

\$5.00 per Year.

PORTLAND CANAL NEWS,
STEWART, BRITISH COLUMBIA.

Enclosed find postal order for \$5, payment for one year's subscription

Name

Address

Date

BRITISH COLUMBIA**The Mineral Province of Western Canada**

Has produced Minerals valued as follows: Placer Gold, \$75,436,403;
Lode Gold, \$97,124,786; Silver, \$46,839,631; Lead, \$42,294,251;
Copper, \$145,741,969; Other Metals (zinc, iron, etc.), \$13,929,817;
Coal and Coke, \$187,147,652; Building Stone, Brick, Cement, etc.,
\$28,843,272, making its Mineral Production to the end of 1919 show

AN AGGREGATE VALUE OF \$637,353,581.

The substantial progress of the Mining Industry in this Province
is strikingly exhibited in the following figures, which show the value
of production for successive five-year periods: For all years to 1895,
inclusive, \$94,547,241; for five years, 1896-1900, \$57,605,967; for
five years, 1901-1905, \$96,509,968; for five years, 1906-1910, \$125,-
534,474; for five years, 1911-1915, \$142,072,603; for the year 1916,
\$12,290,462; for the year 1917, \$37,010,392; for the year 1918,
\$41,782,474.

PRODUCTION DURING LAST TEN YEARS, \$313,976,022.

Lode mining has only been in progress for about 20 years, and
not 20 per cent. of the Province has been even prospected; 300,000
square miles of unexplored mineral-bearing land are open for pros-
pecting.

The mining laws of this Province are more liberal and the fees
lower than those of any other Province in the Dominion, or any
Colony in the British Empire.

Mineral locations are granted to discoverers for nominal fees.
Absolute Titles are obtained by developing such properties, se-
curity of which is guaranteed by Crown Grants.

Full information, together with Mining Reports and Maps, may
be obtained gratis by addressing

THE HON. THE MINISTER OF MINES, Victoria, British Columbia.

EXCHANGE GRILL

HERMAN & McEWEN
Proprietors

BAKERY NOW OPEN
Bread, Pies, Pastry, etc.
We Never Close

SOFT DRINKS and CIGARS
STEWART, B. C.

**Synopsis of
Land Act Amendments**

Minimum price of first-class land
reduced to \$5 an acre; second-class to
\$2.50 an acre.

Pre-emption now confined to sur-
veyed lands only.

Records will be granted covering only
land suitable for agricultural purposes
and which is non-timber land.

Partnership pre-emptions abolished,
but parties of not more than four may
arrange for adjacent pre-emptions
with joint residence, but each making
necessary improvements on respective
claims.

Pre-emptors must occupy claims for
five years and make improvements to
value of \$10 per acre, including clear-
ing and cultivation of at least 5 acres,
before receiving Crown Grant.

Where pre-emptor in occupation not
less than 3 years, and has made pro-
portionate improvements, he may, be-
cause of ill-health, or other cause, be
granted intermediate certificate of im-
provement and transfer his claim.

Records without permanent resi-
dence may be issued, provided appli-
cant makes improvements to extent of
\$100 per annum and records same each
year. Failure to make improvements
or record same will operate as for-
feiture. Title cannot be obtained in
less than 5 years, and improvements
of \$1000 per acre, including 5 acres
cleared and cultivated, and residence
of at least 2 years are required.

Pre-emptor holding Crown grant
may record another pre-emption, if he
requires land in conjunction with his
farm, without actual occupation, pro-
vided statutory improvements made
and residence maintained on Crown
granted land.

Unsurveyed areas, not exceeding 20
acres, may be leased as homesteads;
title to be obtained after fulfilling resi-
dential and improvement conditions.

For grazing and industrial purposes
areas exceeding 640 acres may be
leased by one person or company.
Mill, factory or industrial sites on
timber land not exceeding 40 acres
may be purchased; conditions include
payment of stumpage.

Natural hay meadows inaccessible
by existing roads may be purchased
conditional upon construction of a road
to them. Rebate of one-half of cost of
road, not exceeding half of purchase
price, is made.

**PRE-EMPTORS' FREE GRANTS
ACT.**

The scope of this Act is enlarged to
include all persons joining and serv-
ing with His Majesty's Forces. The
time within which the heirs or devisees
of a deceased pre-emptor may apply
for title under this Act is extended
from one year from the death of
such person, as formerly, until one
year after the conclusion of the present
war. This privilege is also made re-
troactive.

No fees relating to pre-emptions are
due or payable by soldiers on pre-
emptions recorded after June 26, 1918.
Taxes are remitted for five years.

Provision for return of moneys ac-
crued, due and been paid since August
1, 1914, on account of payments, fees
or taxes on soldiers' pre-emptions.
Interest on agreements to purchase
town or city lots held by members of
Armed Forces, or dependents, acquired
direct or indirect, remitted from in-
stment to March 31, 1920.

**SUB-PURCHASERS OF CROWN
LANDS.**

Provision made for issuance of
Crown grants to sub-purchasers of
Crown Lands, acquiring rights from
purchasers who failed to complete
purchase, involving forfeiture, on ful-
filment of conditions of purchase, in-
terest and taxes. Where sub-purchas-
ers do not claim whole of original par-
cel, purchase price due and taxes may
be distributed proportionately over
whole area. Applications must be
made by May 1, 1920.

GRAZING.

Grazing Act, 1919, for systematic
development of livestock industry pro-
vides for grazing districts and range
administration under Commissioner.
Annual grazing permits issued based
on numbers ranged; priority for estab-
lished owners. Stock-owners may
form Associations for range manage-
ment. Free, or partially free, permits
for settlers, campers or travellers, up
to ten head.

For information relating
to Salmon River, Portland
Canal and Alice Arm min-
ing districts, apply to

O. B. BUSH

Mining Broker

VANCOUVER and STEWART

**STEWART
NEWS
STORE**

NEWSPAPERS, BOOKS
MAGAZINES

Agents for J. H. Hirsch & Sons,
Montreal. Manufacturers of
Admiration, Colonial, Metro-
pole and Irving Cigars.

H. P. GIBSON, PROP.
STEWART, B. C.

DALBY B. MORKILL

MINING SURVEYOR

B. C. Land Surveyor

STEWART, B. C.

P. A. JENNS

ASSAYER and CIVIL ENGINEER

HYDER, ALASKA

Gold and Silver, \$2.75

Copper, \$1.50

Lead, \$1.50

PROVINCIAL ASSAYER

D. R. WILLEMAR

Assayer to the Silver Standard Mine

NEW HAZELTON, B. C.

J. R. WILLIAMS

PROVINCIAL ASSAYER

540 Thurlow street - - Vancouver, B.C.

MODERATE PRICES
ACCURACY GUARANT ED

W. D. MACKAY

British Columbia Land Surveyor

STEWART, B. C.

**This is the time for
Coughs and Colds**

Take care and don't let them get a hold on you

A full line of White Pine and Tar Cough syrups.
Genuine Aspirin Tablets.
Pure Cod Liver Oil and Emulsions.
Cough Drops.
Strengthening Plasters for Weak Backs.

Full assortment of Cold Cream for hands and face.

Flashlights, Batteries and Bulbs for the
dark and dangerous trails.**STEWART CITY PHARMACY**

Fifth Street

STEWART, B. C.

B. C. SILVER MINES LIMITED.

CAPITAL, \$1,500,000

This Company has taken over the Lake and O'Leary claims situated between the Premier and Bush Mines, and the Mountain Group, situated between the Premier and the International.

**Three High Grade Veins
Found on this Property**

FIRST ISSUE AT 20 C.

Par Value One Dollar

Will be listed on Vancouver Stock Exchange

Applications received by O. B. BUSH, 344 Pender St. W., VANCOUVER

THE G. W. NICKERSON CO., LTD.

PRINCE RUPERT, B.C.

FORWARDING AGENTS

Goods Shipped in Our Care will
Receive Prompt Attention

CONSULAR INVOICES OBTAINED

JOHN HOVLAND

ASSAYER

HYDER, ALASKA

TOOTH'S SMOKE SHOP

WILLIAM REID TOOTH, Proprietor

Soft drinks Solo Tables

Everybody Welcome

STEWART, B. C.

Subscribe for Portland Canal News.

Write or see secretary of Portland Canal Prospectors' Association for reliable information on mining prospects, camp conditions, etc., Salmon River and Bear River districts. Prospectors are invited to exhibit their ore in show room. Dues \$5 a year. tf

Clothes Pressing
Repairing and
Cleaning

BATHS

MRS. MARTIN - Fifth St.

STEWART LAND COMPANY, LTD.

ROBERT M. STEWART, President

**REAL ESTATE, INSURANCE, MINES
FINANCIAL AGENTS**

Head Office, 101 Pemberton Block, Victoria, B.C.

WANTED: LISTINGS OF PROPERTIES FOR SALE OR LEASE
STEWART LAND CO., Ltd. Fifth St., STEWART, B.C.

JOHN MELLOR

---GENERAL MERCHANDISE---

Direct importer of Groceries, Men's Furnishings, Clothing, Boots and Shoes, Rubber Goods, Miners' Supplies, Hardware, Tobacco, etc.

P.O. BOX 95

Stewart, B.C.



Railway and Steamship Lines

Steamers sailing between Seattle, Victoria, Vancouver, Ocean Falls, Swanson's Bay, Prince Rupert, Anyox, Stewart and Queen Charlotte Islands.

—SAILINGS from PRINCE RUPERT—

THURSDAY AND SUNDAY MIDNIGHT for SWANSON BAY, OCEAN FALLS, VANCOUVER, VICTORIA and SEATTLE
WEDNESDAY AND SATURDAY MIDNIGHT FOR ANYOX

Arrive Prince Rupert from South at 10:30 every Wednesday and Saturday.

SS. PRINCE JOHN Leaving Stewart Thursday morning Dec. 11 and 25, and fortnightly thereafter.

Train Service:

Passenger MONDAY, WEDNESDAY and SATURDAY at 11:30 for Smithers, Prince George, Edmonton and Winnipeg, making direct connections for all points East and South.

For further information apply to any Grand Trunk Pacific agent or to G. A. McNicholl, Asst. General Freight and Passenger Agent, Prince Rupert.

STEWART, B.C.

is back on the map

STEWART is once more attracting the attention of the mining world. Following the boom of 1910 came a period of inactivity. But some mining development was continued. Year after year this was continued and today the unfaltering faith of the pioneers of the camp is justified. Every sign indicates that Stewart, the natural hub of this great mineral area, is on the eve of a substantial prosperity upon the solid foundation of development.

For information address: STEWART CITIZENS' ASSOCIATION

Take Time Now

TO HAVE YOUR teeth attended to. Do not wait till aches force you. If your teeth are in bad condition it means your health is being steadily undermined. Keep them attended to properly and you will be saved a lot of misery. Nowadays dental science has removed largely the former fear of pain and the old-time fears are gone.

DR. ALFRED H. BAYNE
Dental Surgeon PRINCE RUPERT

HELGERSON BLOCK

MINERAL ACT Certificates of Improvements Notice

Columbia and Evening Sun mineral claims situate in the Portland Canal mining division of Cassiar district.

Where located: on the middle fork of Glacier Creek, tributary of Bear River, 8 miles from Stewart.

Take notice that I, W. W. Rush, F.M.C. No. 34141 C, acting as agent for Arthur Bagg, F.M.C. No. 12255, intend, sixty days from the date hereof to apply to the mining recorder for a Certificate of Improvements, for the purpose of obtaining a Crown Grant of the above claims.

And further take notice that action, under section 85 must be commenced before the issuance of such Certificate of Improvements.

Dated this 25th day of November, A.D. 1919.

It is rather disappointing that the snow tractor for the Premier mine is not in working order. The fault, it is believed, is not with the machine, but in the handling of it in transit, no provision against the cold weather having been made.

Declaration of Dissolution of Partnership. Province of British Columbia, County of Altin.

I, George Zabriskie 2nd, of Stewart, B. C., merchant, formerly a member of the firm carrying on business as general merchants at Stewart, B. C., in partnership with Guy E. Austin, under the style of Stewart Trading Company, do hereby certify that the said partnership was on the 7th day of November, 1919, dissolved.

Witness my hand at Prince Rupert, B. C., this 15th day of November, 1919.

GEORGE ZABRISKIE 2nd
Witness: W. C. ORCHARD.

R. K. Neill, general manager of the Premier, will return to Stewart soon.

W. V. Somerville, who has a deal on during the summer for the Montana group on Marmot river, is devoting his activities at present to getting started on the Homestead in Alice Arm.

Noel Humphries, who surveyed the original townsite of Stewart, expects to open an office here in the spring.

Portland Canal News

JAMES CULLINS - - Publisher

A newspaper published in the interests of the Salmon River, Portland Canal, Alice Arm and Anyox mining districts.

Subscription Five Dollars a year

Advertising Rates:

Display advertising, 50c per inch per issue.

Reading notices, 25c per line.

Long time contracts special rates as follows: one year, 30c per inch; six months, 40c per inch.

Time contracts on reading notices 20 per cent. discount.

Special position display or reading, 25 per cent. above ordinary run of rates.

Certificate of Improvement \$15 (if more than one claim, \$2.50 for each additional claim mentioned).

Land notices, \$7.

Coal notices, \$5.

No advertising accepted for First Page.

News from the south that interest in the Portland Canal district, is so great everywhere is encouraging to the pioneers of the district whose faith has caused the development which has taken place since the boom days of 1910.

A report from Spokane is to the effect that Mr. R. K. Neill is about to face an action for a division of his interest in the Premier mine. Whatever the facts may be, those who know Mr. Neill will be certain that the inuendo in the press news is uncalled for. And, furthermore, Mr. Bacon will have the scrap of his life if he puts anything over.

R. W. Martin, one of the men in the Mineral Hill partnership, owning the Mineral Hill group, is in Vancouver, having returned from Hot Springs, Ark. Bob is looking fit as usual, and says he and Doc Carter had a good time together. The east is excited about the Portland Canal mineral area, he says.

Hugh McGuire is in New York in the interests of his mining property on Salmon River.

We have just received on the last boat a large shipment of

Men's woolen work shirts, Mackinaw shirts, sweaters, caps, socks, pants, overalls. Also a full line of oiled and waterproofed clothing. Rubber footwear included, shoe packs, men's and women's storm-overs and rubbers. We also have a good assortment of men's and women's dress shoes.

Come in and see our bedding, heavy warm blankets, just the thing for this weather. Comforters, pillows, sheets, pillowcases, etc.

Don't forget that we carry a full line of the well known NABOB BRAND GROCERIES

Have you tried a box of our dandy Mackintosh eating and cooking apples? Remember: "An apple a day keeps the doctor away."

We carry best brands of flour including: FIVE ROSES, PURITY and ROBIN HOOD

STEWART TRADING COMPANY

OPP. GOVERNMENT TELEGRAPHS

Promptness and Courtesy

G. E. AUSTIN

SALMON RIVER TRADING CO., LTD.

HYDER, ALASKA

J. V. CLEGG, Manager

STEWART, B. C.

A. N. PATERSON, Mgr.

This is the time of year when the thick old Mackinaw looks good to you

Take a look at the woolen showings in our Hyder Store—

We carry the famous Black Bear Brand and believe me they are a bear!

Mackinaws
Heavy Underwear
Sweaters
Heavy Sox
Woolen Pants

Heavy Blankets
Gloves
Sweater Coats
Flannel Blankets
Heavy Sox

Ask Clegg to show you some of those woolen vests "FARWEST"

Make your house comfortable
see the stoves in Stewart store

COAL STOVES WOOD STOVES
HEATERS

Place your orders for future deliveries of coal.

We sell the Aladdin Lamp. Burns coal oil. Produces the brightest light. Safe. Economical. Come in and we'll demonstrate the ALLADIN to you.