

THE PERCEPTION OF SPACE BETWEEN BODY AND FORM :
A SCHOOL FOR PHOTOGRAPHY
IN
DOWNTOWN VANCOUVER

by

KENTEN MORRIS GRIER

B. of Environmental Studies, The University of Manitoba, 1988

A THESIS SUBMITTED IN PARTIAL FULFILLMENT OF

THE REQUIREMENTS FOR THE DEGREE OF

MASTER OF ARCHITECTURE

in

THE FACULTY OF GRADUATE STUDIES

School of Architecture

~~We accept~~ this thesis as conforming ,
~~to the required standard~~

THE UNIVERSITY OF BRITISH COLUMBIA

May 1998

© Kenten Morris Grier, 1998

In presenting this thesis in partial fulfilment of the requirements for an advanced degree at the University of British Columbia, I agree that the Library shall make it freely available for reference and study. I further agree that permission for extensive copying of this thesis for scholarly purposes may be granted by the head of my department or by his or her representatives. It is understood that copying or publication of this thesis for financial gain shall not be allowed without my written permission.

School
~~Department~~ of *Architecture*

The University of British Columbia
Vancouver, Canada

Date *April 30 96*

ABSTRACT

This thesis addresses issues of perception between body and form and questions how architecture as built form conveys meaning through the phenomena of perception. Particularly looking at how architecture as built form affects one's perception of being in space and time through one's experience of being both within a building, and within the city on a larger scale. Through the phenomena of perception one is able to realize the intentions which built form conveys as part of an experiential realm which exists between body and form. Such a discussion involves one's ability to merge one's inner perceptions with a reading of the role or purpose an object facilitates through its presence and its occupation of space.

Built form conveys meaning through the use of architectural elements to define spatial relationships which act as a framework for one's being in time. Architectural elements such as the ground plane, walls, floor slabs, roof, and structural systems occupy space in a manner that conveys intentions and defines spatial relationships between the body and the design project in its entirety. Such intentions have meaning to one's existence of being in space through the perceived value of the object, its 'reason for being' in relation to one's own existence of being in space and time. Through the use of architectural elements one perceives the body's position in space in relation to distances, scale, and the marking of site which defines spatial relationships between the body and the building within its given context.

The design project, a school for photography located in downtown Vancouver, explores how one's perception of being in space and time is paralleled by a means of construction, both physical and mental constructions of space, which frame one's experiences of being within a building, and one's experience of being within the city. The project constructs space through the use of built form and its occupation of site to convey meaning through one's ability to perceive the school as a place within the city for viewing, and for drawing attention to photography as a medium through which representations of space are produced within the public eye.

TABLE OF CONTENTS

Abstract		ii
Table of Contents		iii
Acknowledgment		iv
LIST OF FIGURES		
Figure 1	Context Plan	1
Figure 2	Perspective Looking Down Cordova Street	2
Figure 3	Cordova Street Elevation	3
Figure 4	Parking Level Floor Plan and Gallery/Lower Level Floor Plan	4
Figure 5	Ground Level Floor Plan and Perspective View At Entry	5
Figure 6	Theatre Level Floor Plan and Third Level Floor Plan	6
Figure 7	Fourth Level Floor Plan and Fifth Level Floor Plan	7
Figure 8	Side Elevation and Street Elevation	8
Figure 9	Party Wall Elevation and Back Lane Elevation	9
Figure 10	Section A A	10
Figure 11	Section B B Through Gallery and Theatre	11
Figure 12	Section C C Through Central Space	12
Figure 13	Section D D Through Central Space	13
Figure 14	Section E E Through Dark Rooms	14
Figure 15	Projection of Student Work on Street Screens for Evening Show	15
Figure 16	Site Model	16
Figure 17	Conceptual Model	17
Figure 18	Model of Developing Rooms	18
Figure 19	Model of Photography School	19

ACKNOWLEDGMENT

I would like to extend my sincere thanks to my committee members for their guidance and encouragement throughout my thesis. I would like to thank Pat Patkau for acting as chairperson of the committee, for her dedication as a mentor throughout the design project, and for her constructive comments throughout my education which taught me how to see in order to design. I would like to thank Frances Schmitt for her advice and guidance which helped me to write the theoretical portion of the thesis, for teaching me how to read critically and translate my thoughts into writing. Furthermore, I would like to thank Rafael Gomez-Moriana for his insightful comments during committee meetings. These comments lead to interesting discussions relating issues of perception to the role built form plays in how it affects one's experience of being within a building.

I would like to express my gratitude to my wife Sandra for her continuous support throughout my studies in architecture, for her patience and endurance in holding our family together in my absence.

Thank you.

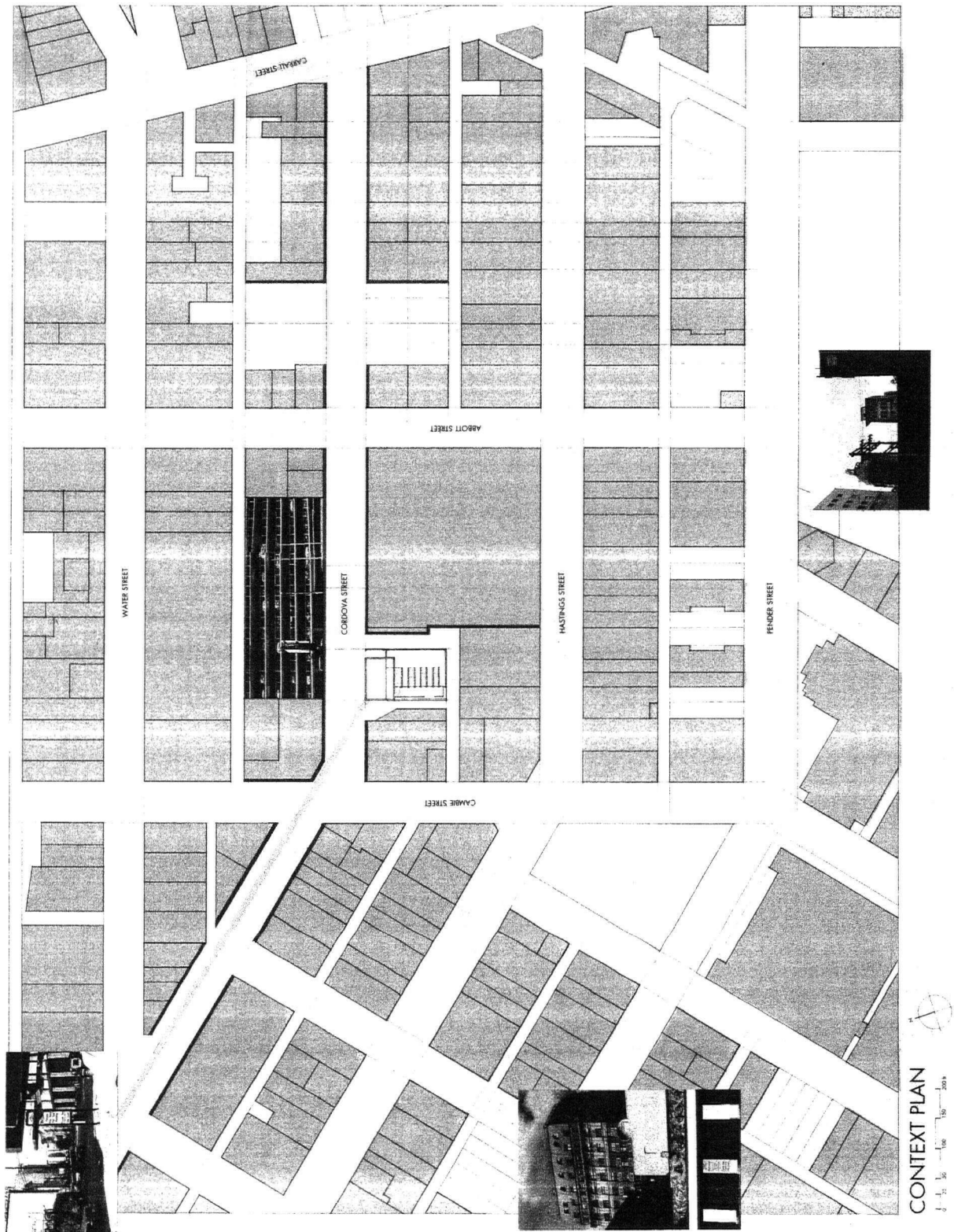
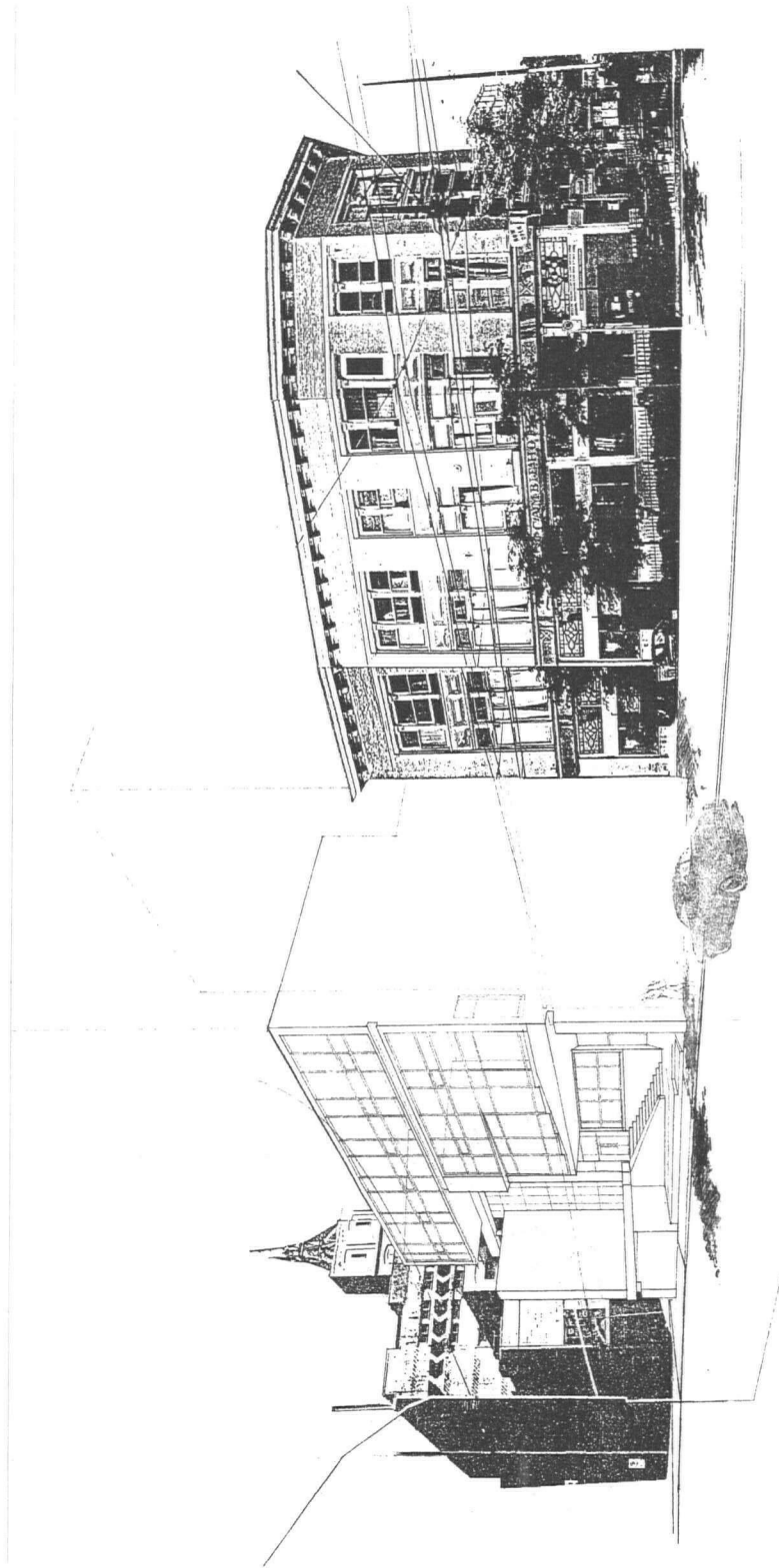


Figure 1



Perspective Looking Down Cordova Street

Figure 2

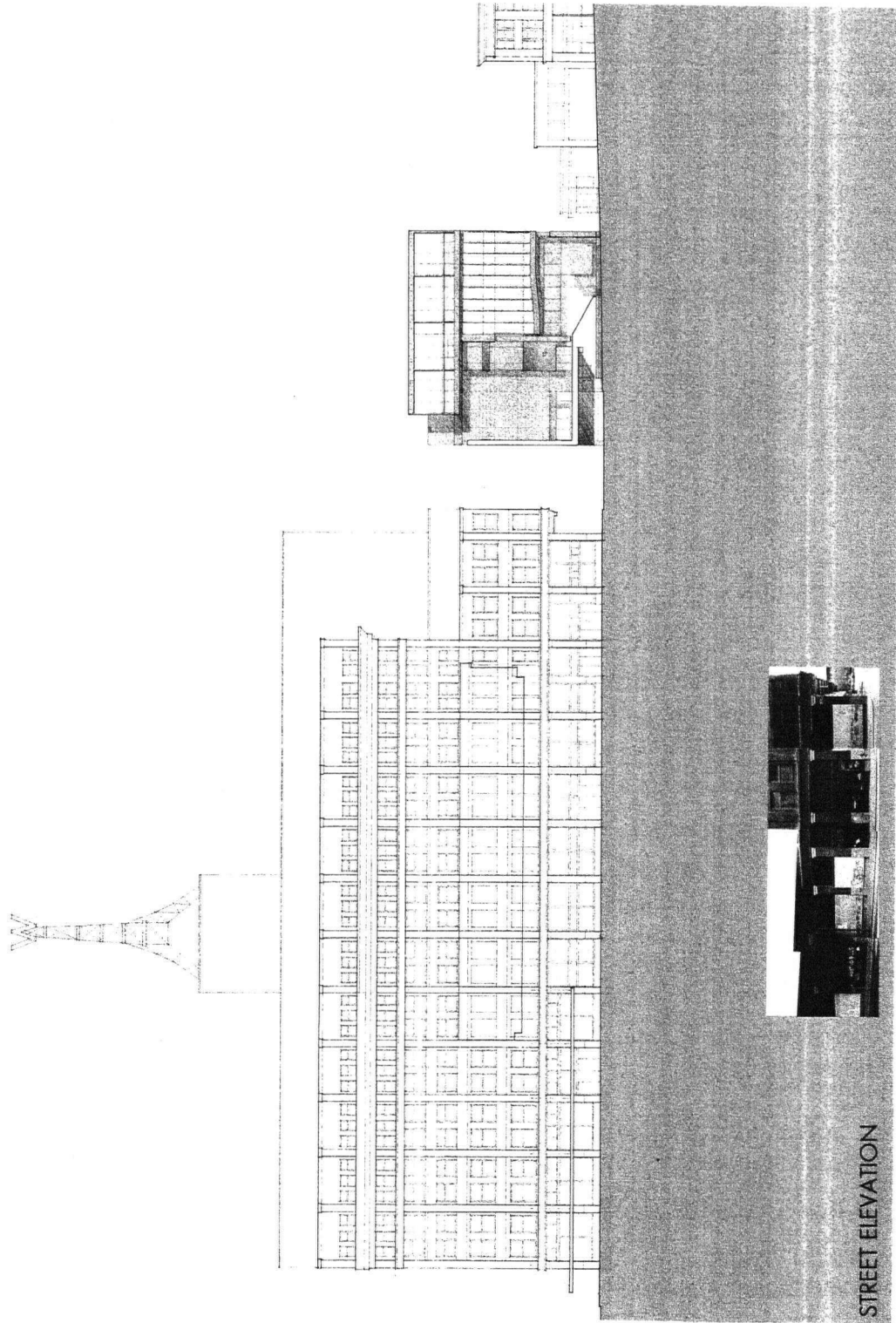
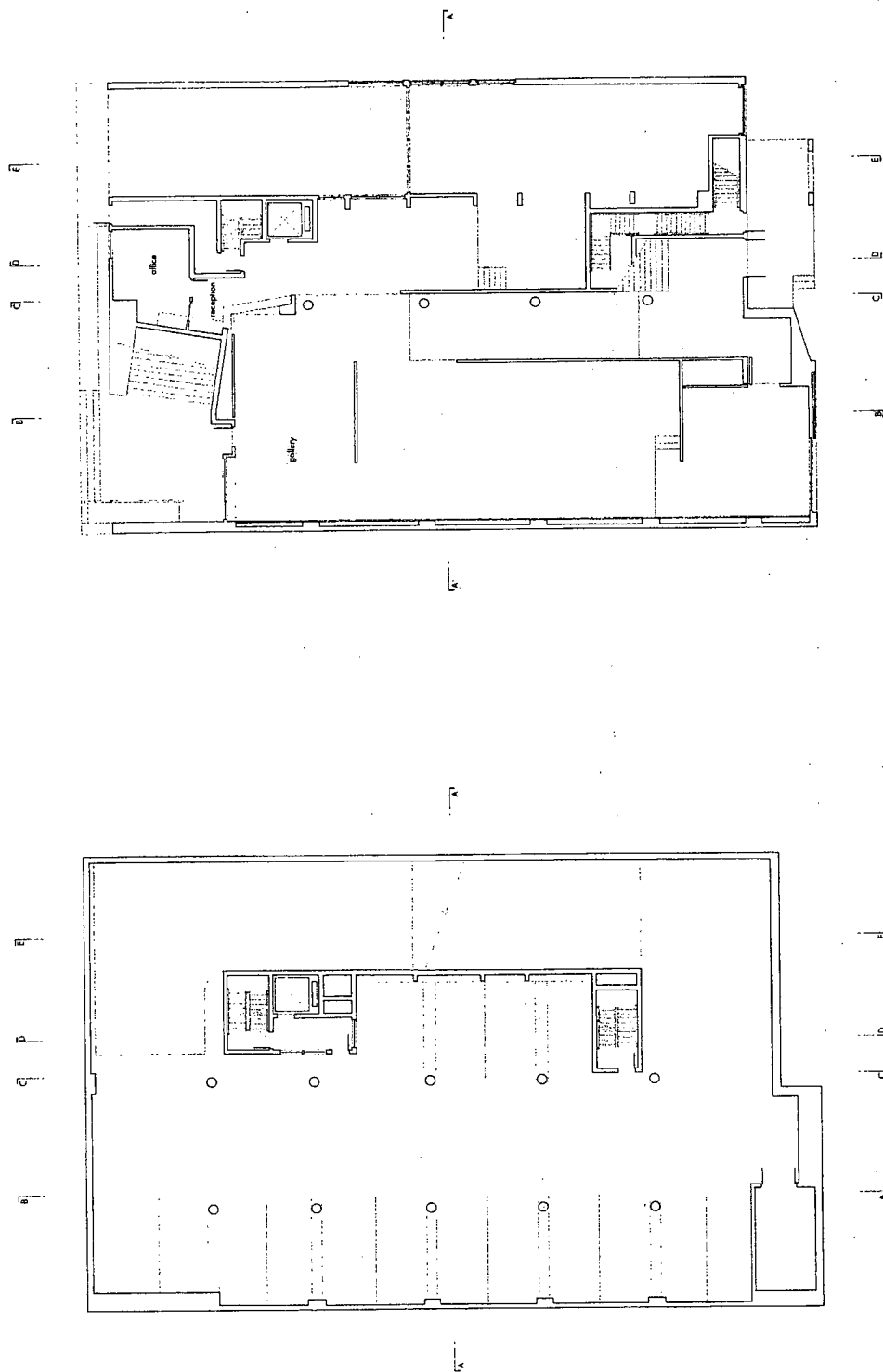


Figure 3



GALLERY / LOWER LEVEL

PARKING

Figure 4

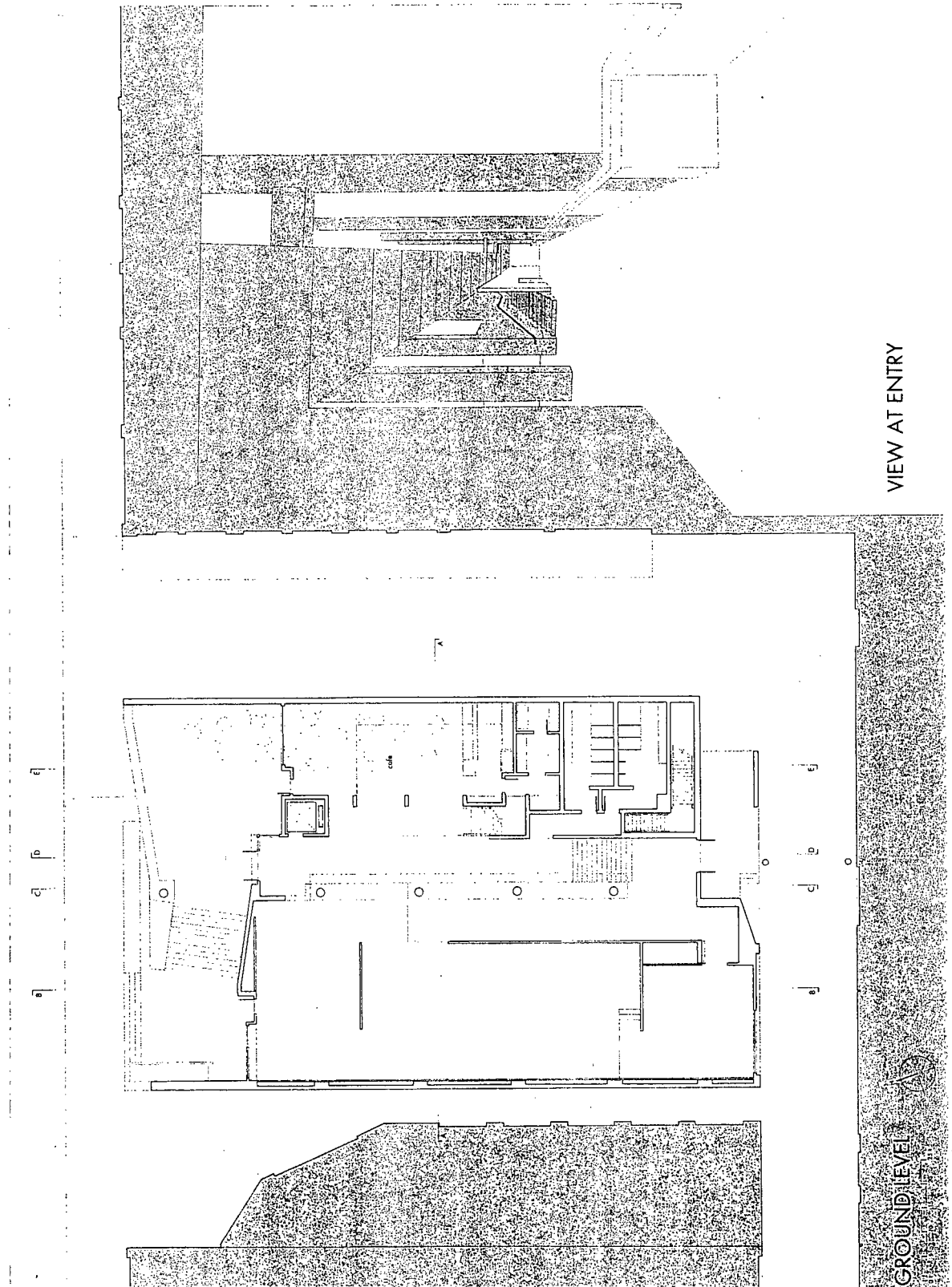
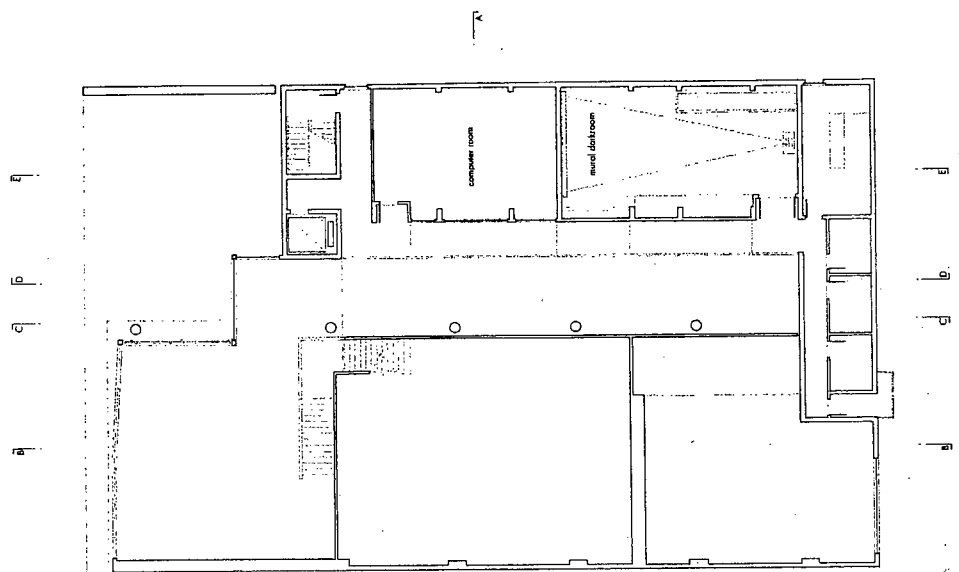
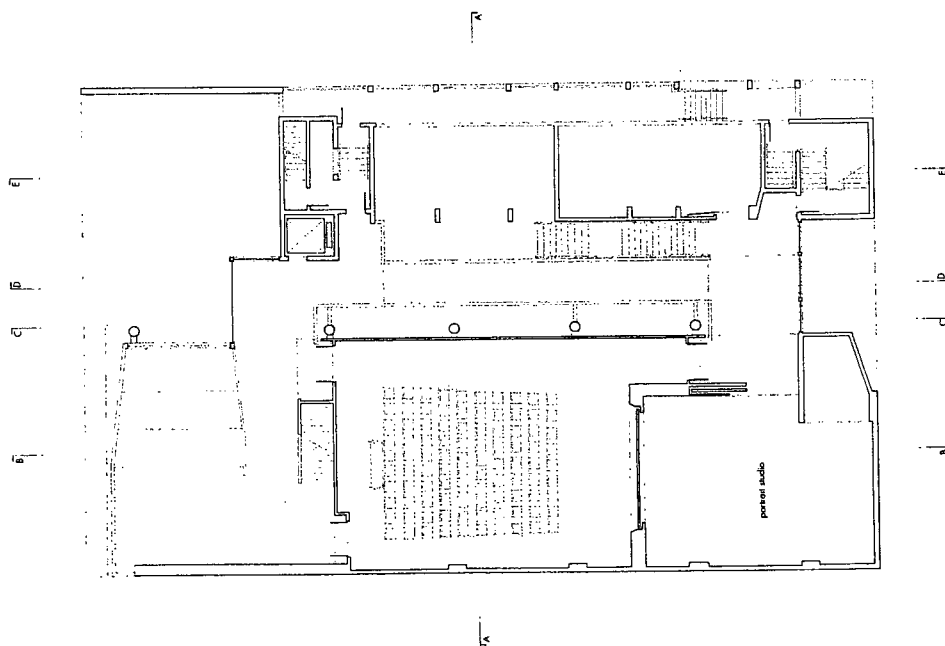


Figure 5

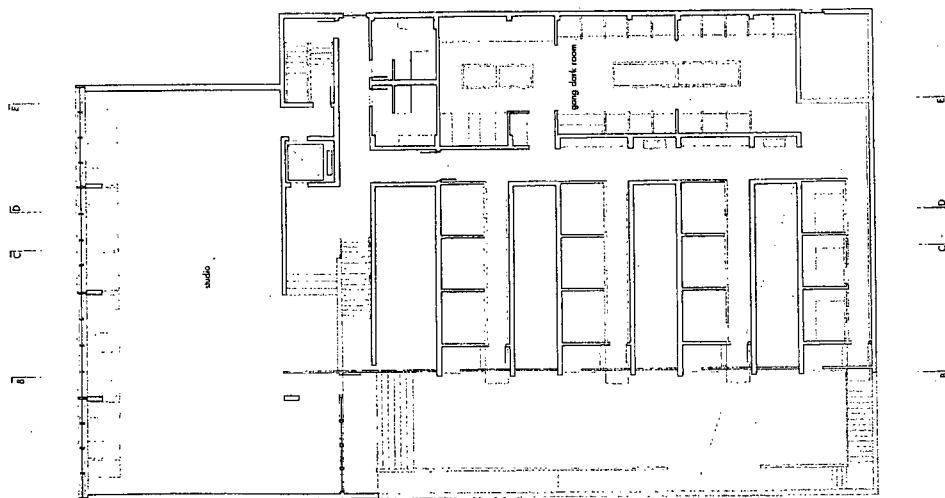


THIRD LEVEL

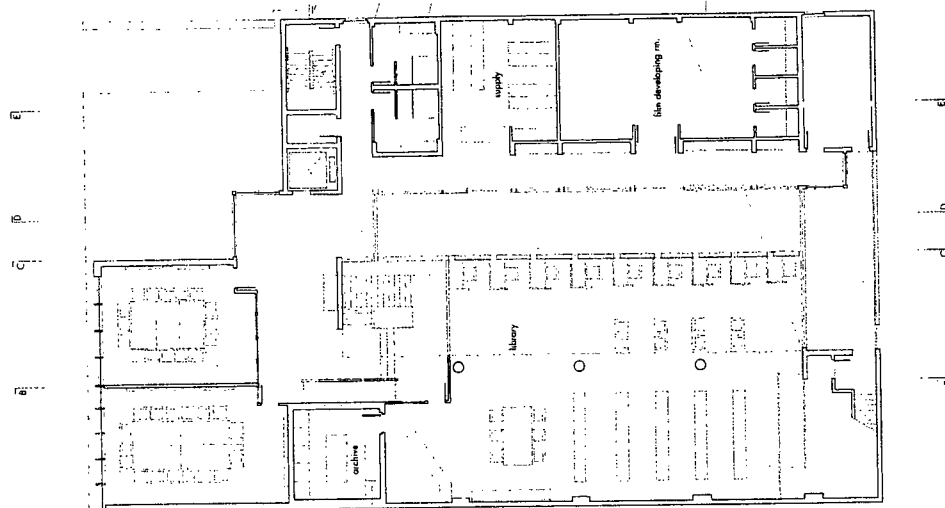


THEATRE LEVEL

Figure 6



FIFTH LEVEL



FOURTH LEVEL

Figure 7

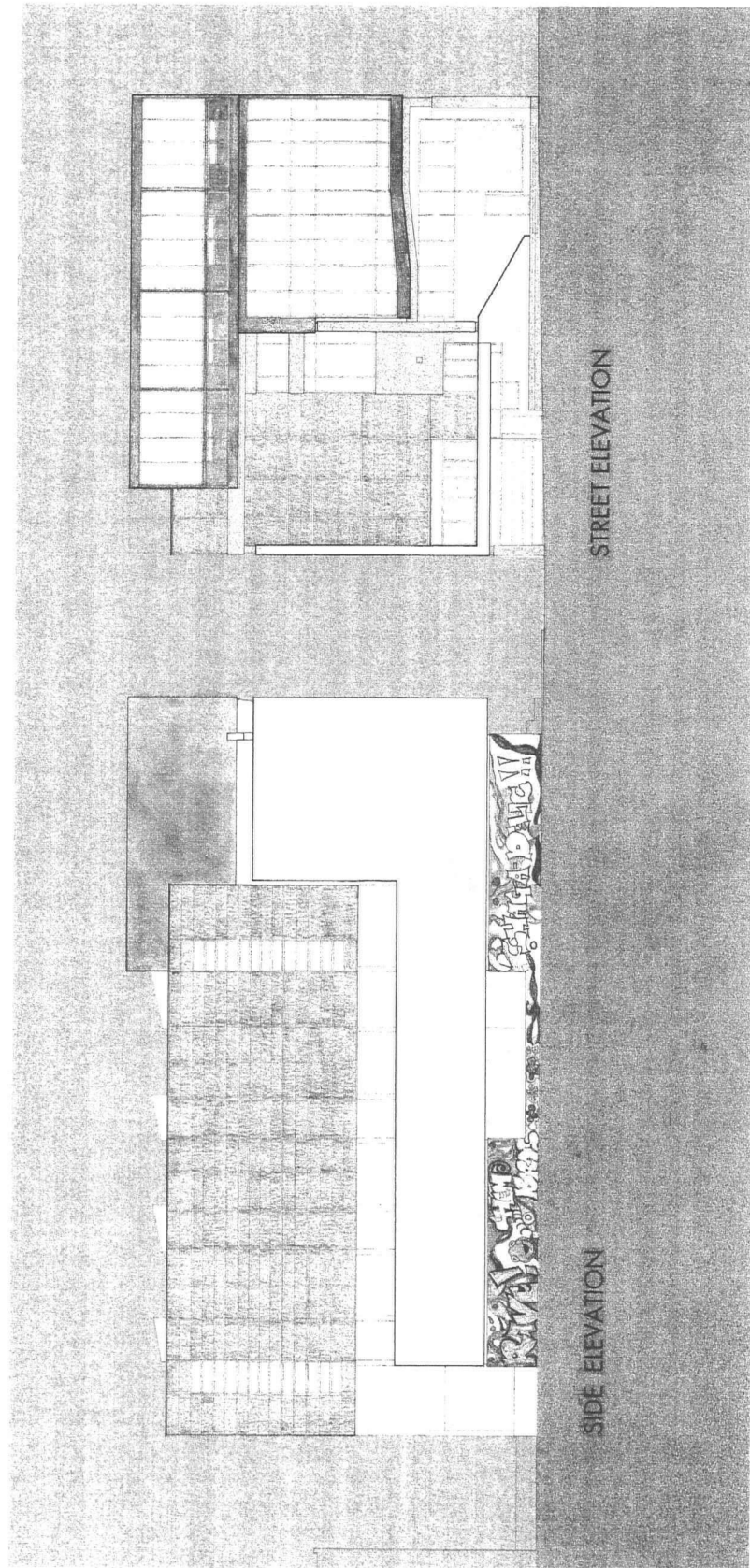


Figure 8

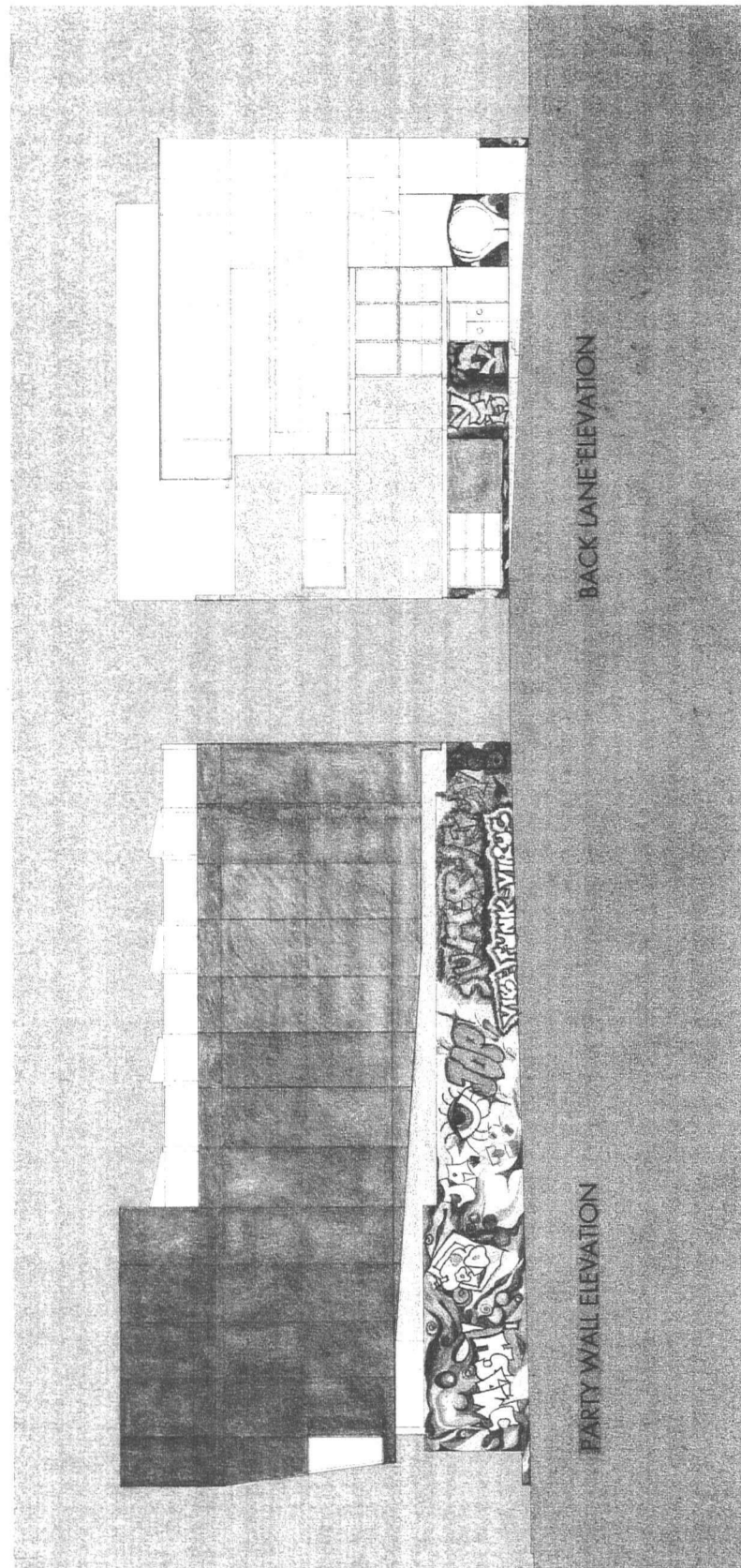


Figure 9

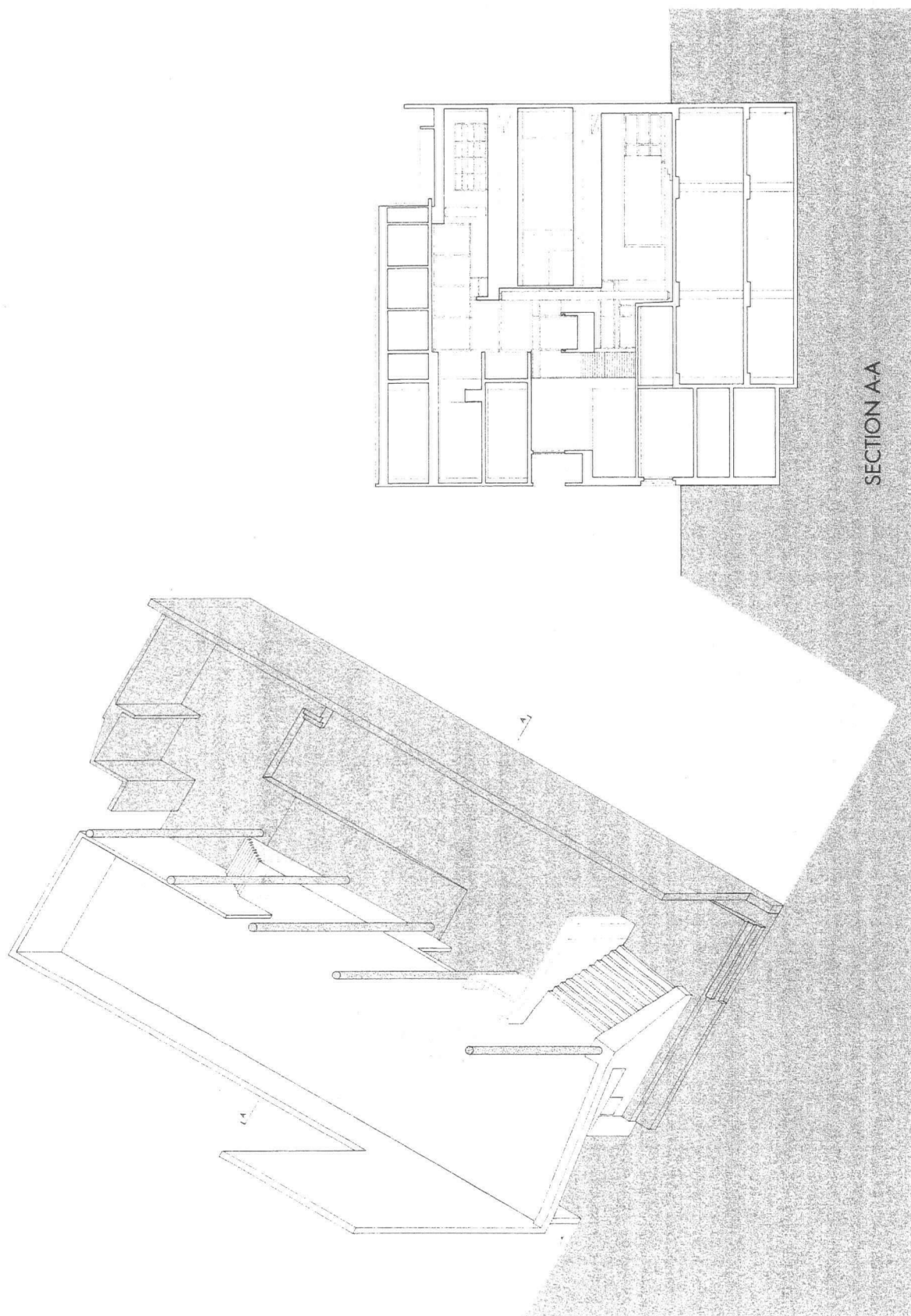


Figure 10

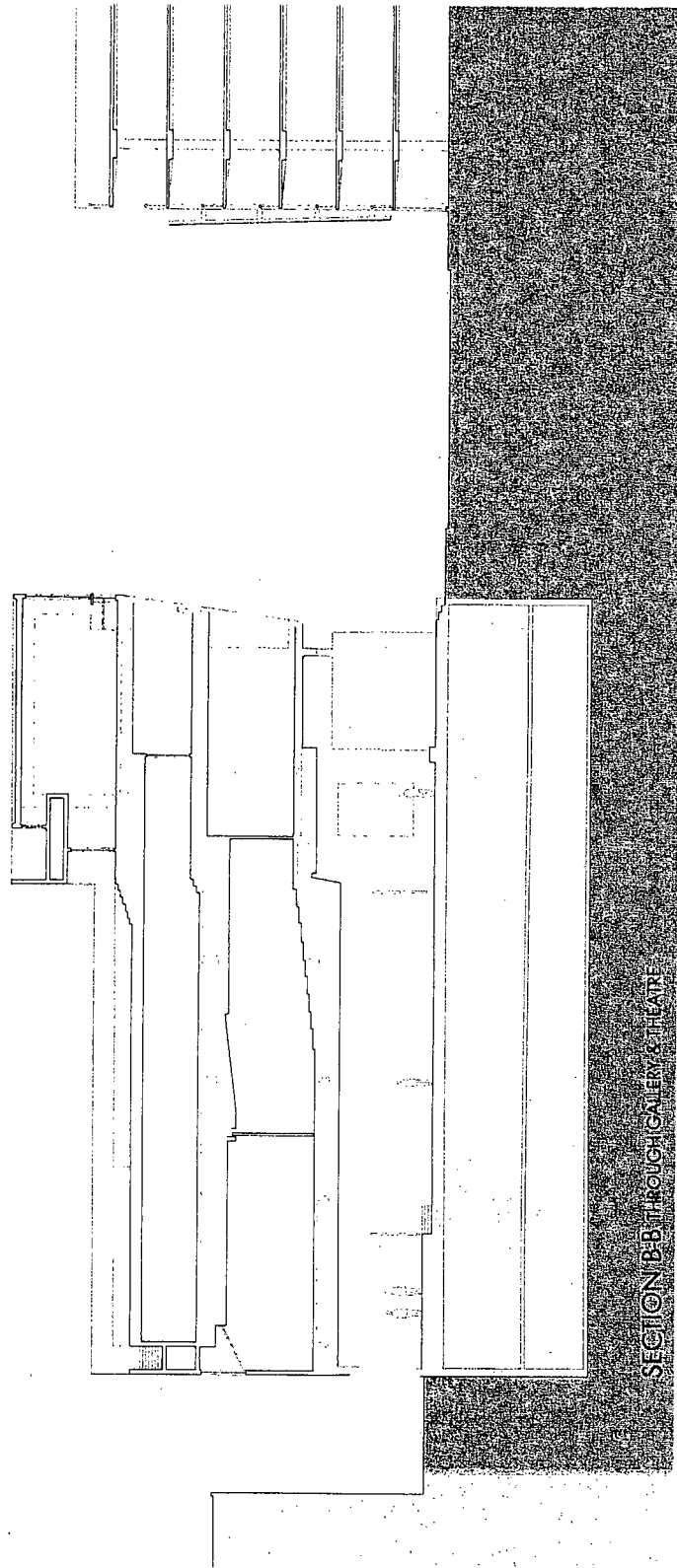


Figure 11

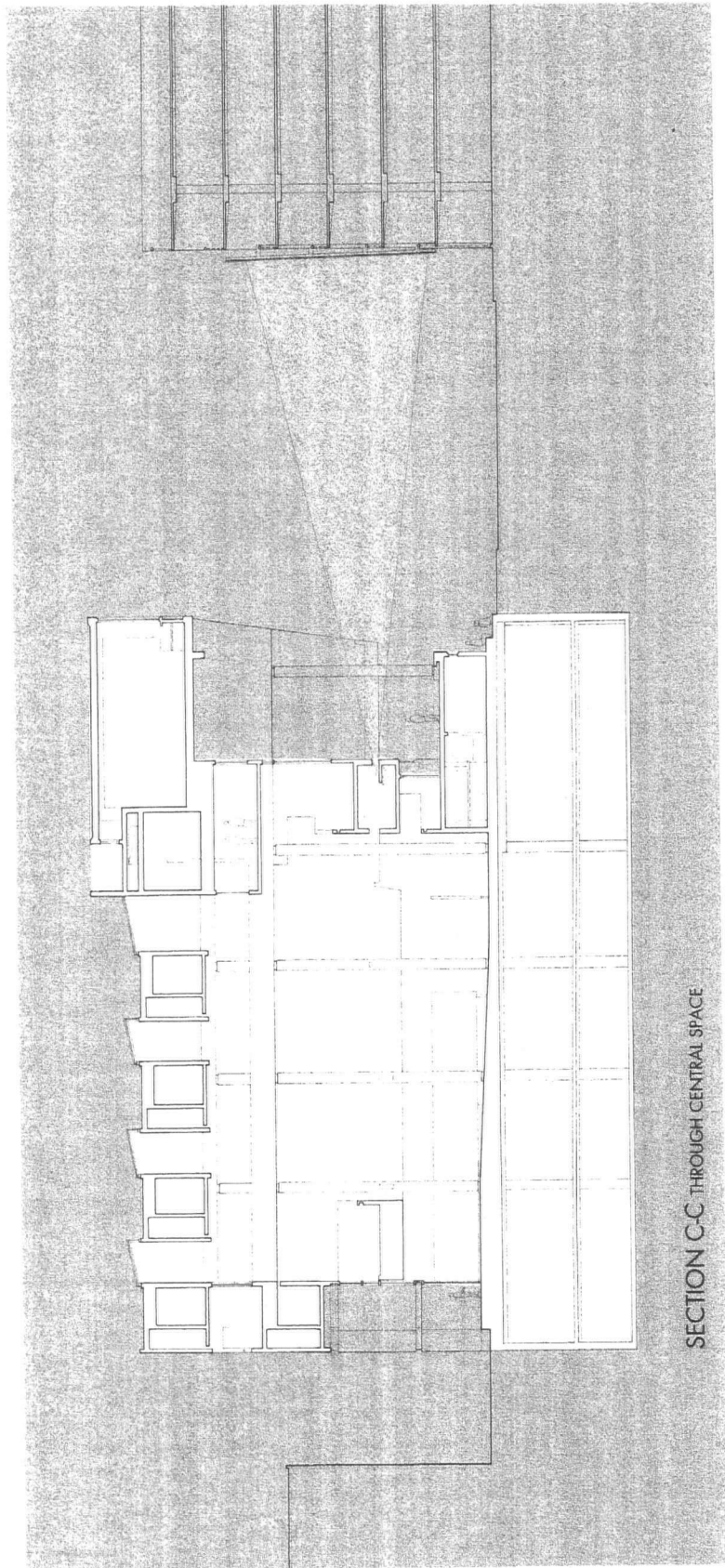


Figure 12

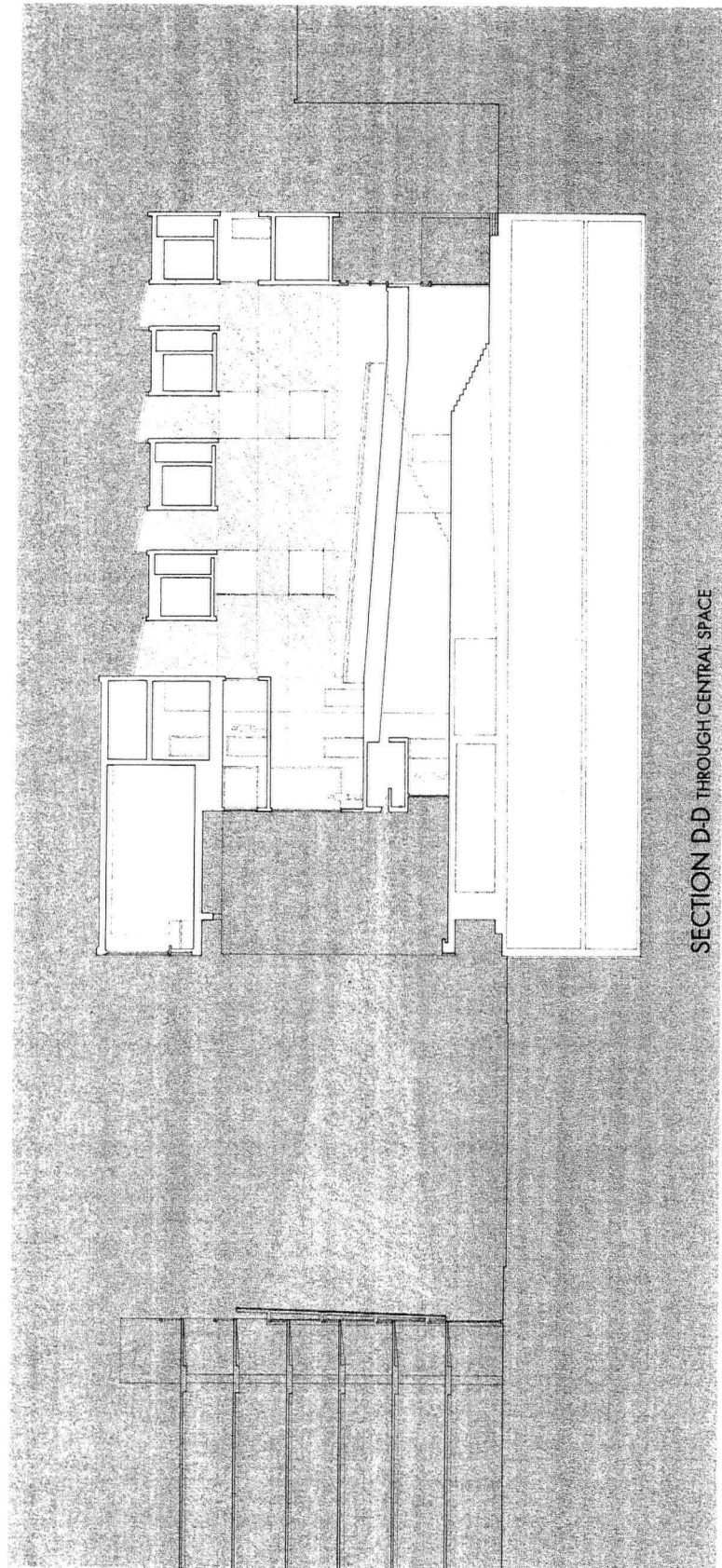


Figure 13

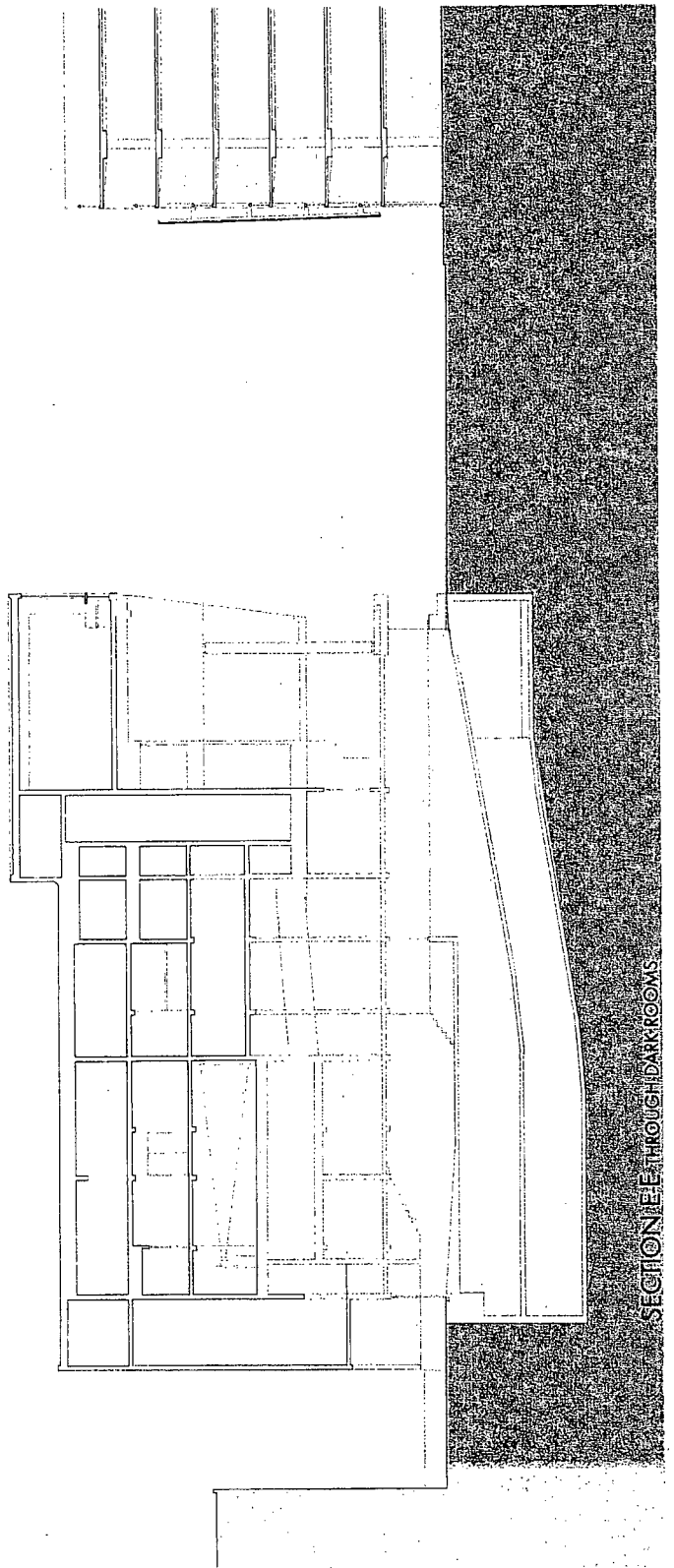
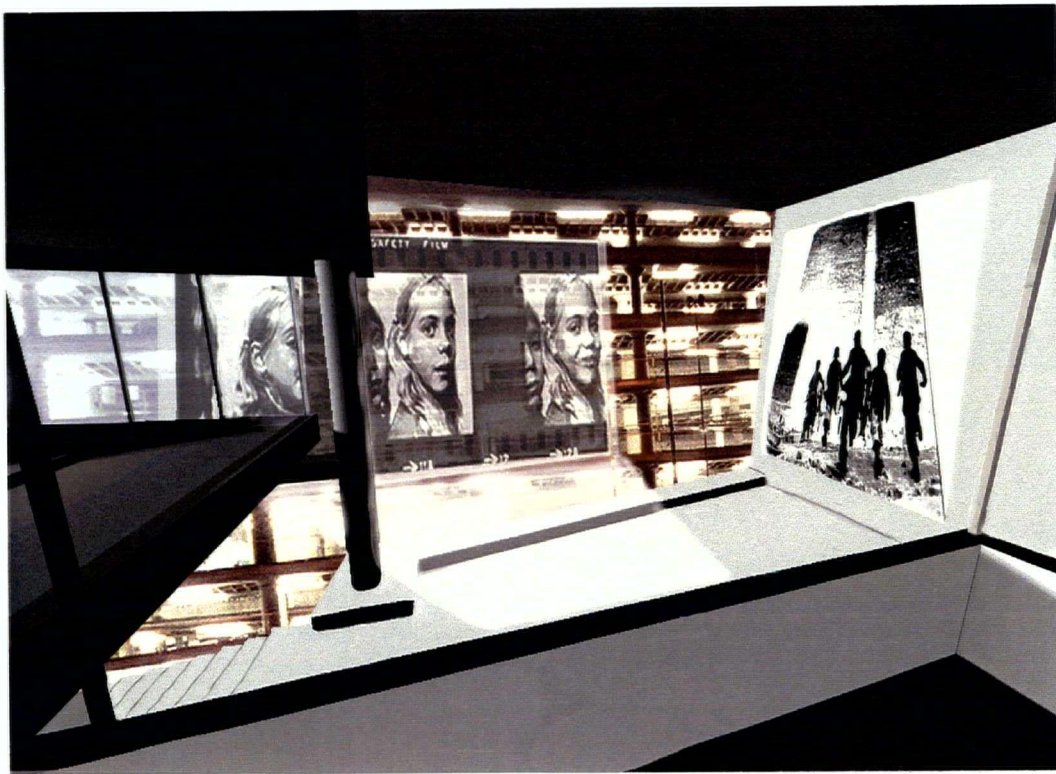
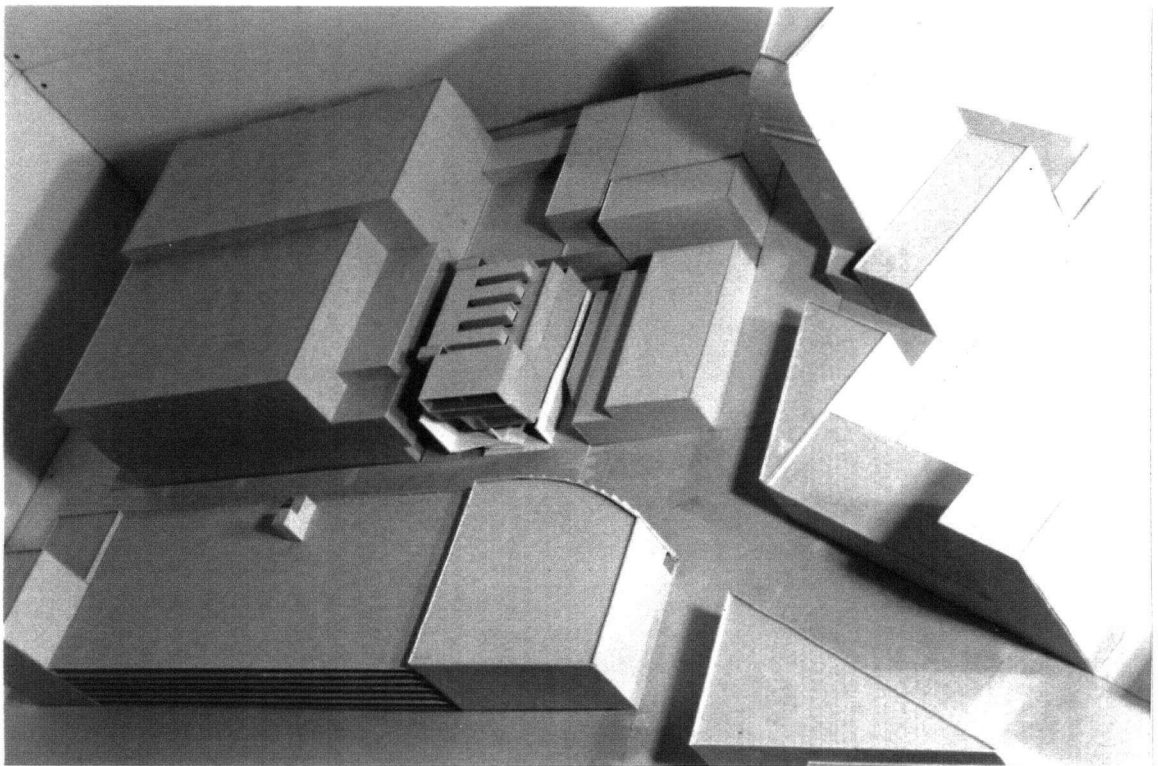


Figure 14



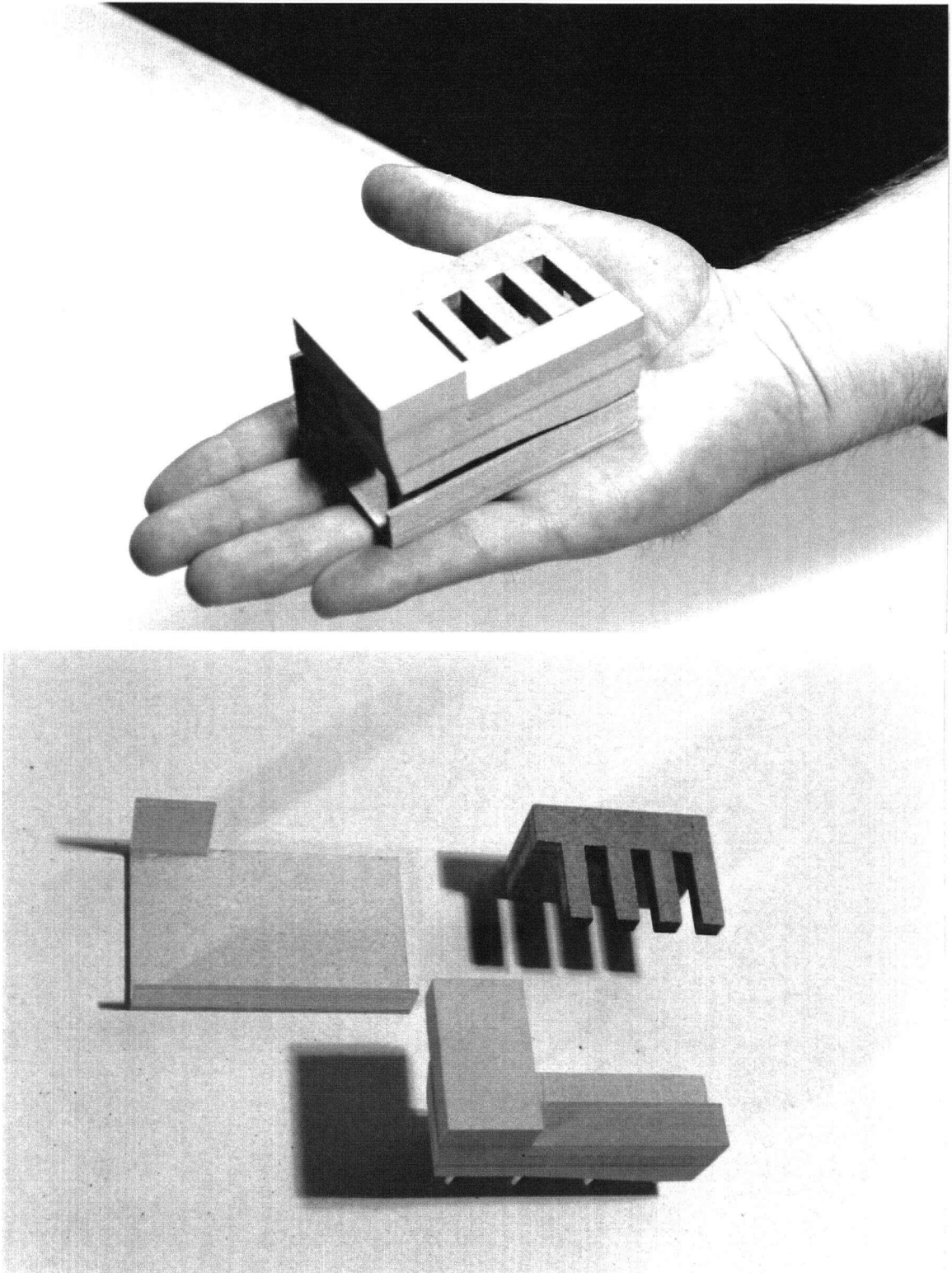
Projection of Student Work on Street Screens for Evening Show

Figure 15



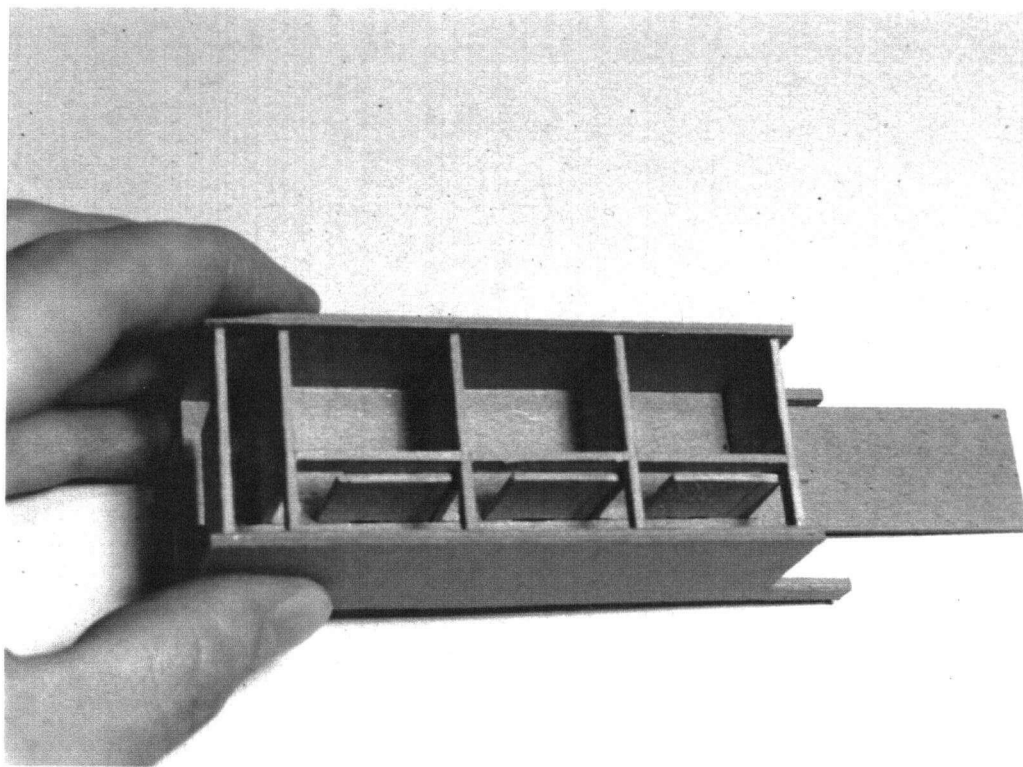
Site Model

Figure 16



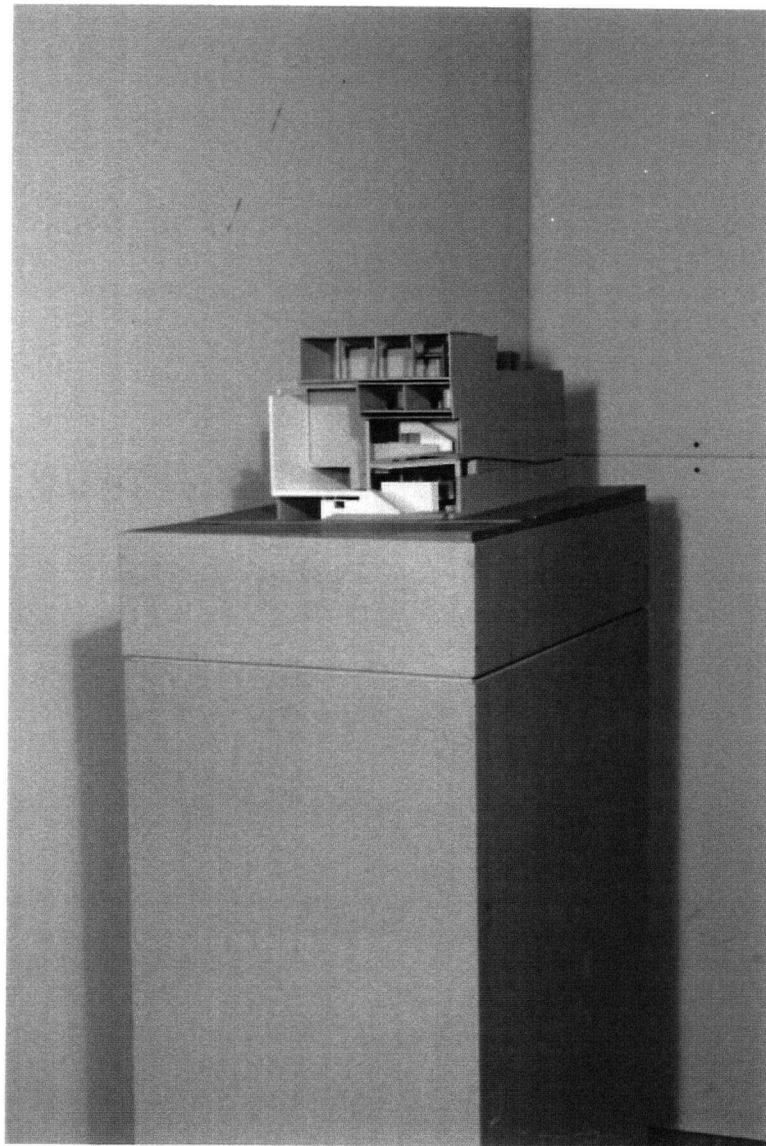
Conceptual Model

Figure 17



Model of Developing Rooms

Figure 18



Model of Photography School

Figure 19