

ANOTHER HOTEL IN VANCOUVER

by

BRIAN CHARLES WAKELIN

B.Sc., The University of Victoria, 1992

A THESIS SUBMITTED IN PARTIAL FULFILLMENT OF

THE REQUIREMENTS FOR THE DEGREE OF  
MASTER OF ARCHITECTURE

in

THE FACULTY OF GRADUATE STUDIES

School of Architecture

We accept this ~~thesis~~ as conforming to the required standard

THE UNIVERSITY OF BRITISH COLUMBIA

January 1998

© Brian Charles Wakelin, 1998

In presenting this thesis in partial fulfilment of the requirements for an advanced degree at the University of British Columbia, I agree that the Library shall make it freely available for reference and study. I further agree that permission for extensive copying of this thesis for scholarly purposes may be granted by the head of my department or by his or her representatives. It is understood that copying or publication of this thesis for financial gain shall not be allowed without my written permission.

Department of Architecture.

The University of British Columbia  
Vancouver, Canada

Date Jan 29, 1998.

## ABSTRACT

The main preoccupation of this project is desire and pleasure. The program of a hotel in Vancouver was the chosen vehicle for this project. One of the main ways hotels in Vancouver provide pleasure is through the provision of views of mountains and the harbour. The Landmark hotel for example (located across the street from the project site), distinguishes itself in its marketing brochure as "Vancouver's tallest hotel (with) tastefully appointed, air-conditioned rooms and suites that feature private balconies with unsurpassed views of Vancouver's scenic wonders." However, beyond the building's size and resulting viewing opportunity, the facility has very little to offer in terms of memorable character or identity. The second sentence describing the qualities of the hotel room amenities states that "Each room is equipped with state-of-the-art security and fire prevention systems, in-room movies and two-line telephones with computer access and voice-mail messaging." The third sentence describing the hotels again makes reference to view: "Enjoy fine dining in our Cloud Nine revolving restaurant, where the panoramic views are only surpassed by our fine cuisine and service that caters to your every need."

Commencing with the hotel room, the project challenges the position that the only thing worthy of attention from the hotel room is the distant view. The room's manipulation in plan and section provide a series of framed views through spaces with differing spatial and material character without departing from the typical thirteen by thirty foot shell of most hotel rooms. From the vanity the bedroom and sitting area are the foreground of the distant views. The strategy for the public spaces is similar. The lobby bar for example overlooks the lobby and the porte cochere. The restaurant overlooks a garden terrace with the view to the North Shore beyond. At mid tower the Corkscrew Lounge overlooks a terrace which is foreground to the view over Robson Street. At the top the Umbrella ballroom overlooks the swimming pool as well as Stanley Park. The strategy for the public spaces in the middle and upper tower is also aided by the fact that they are seen from a distance in the city. They are formal exceptions read against the regular field of identical rooms. They advertise themselves as places of pleasure people in the city can imagine themselves in.

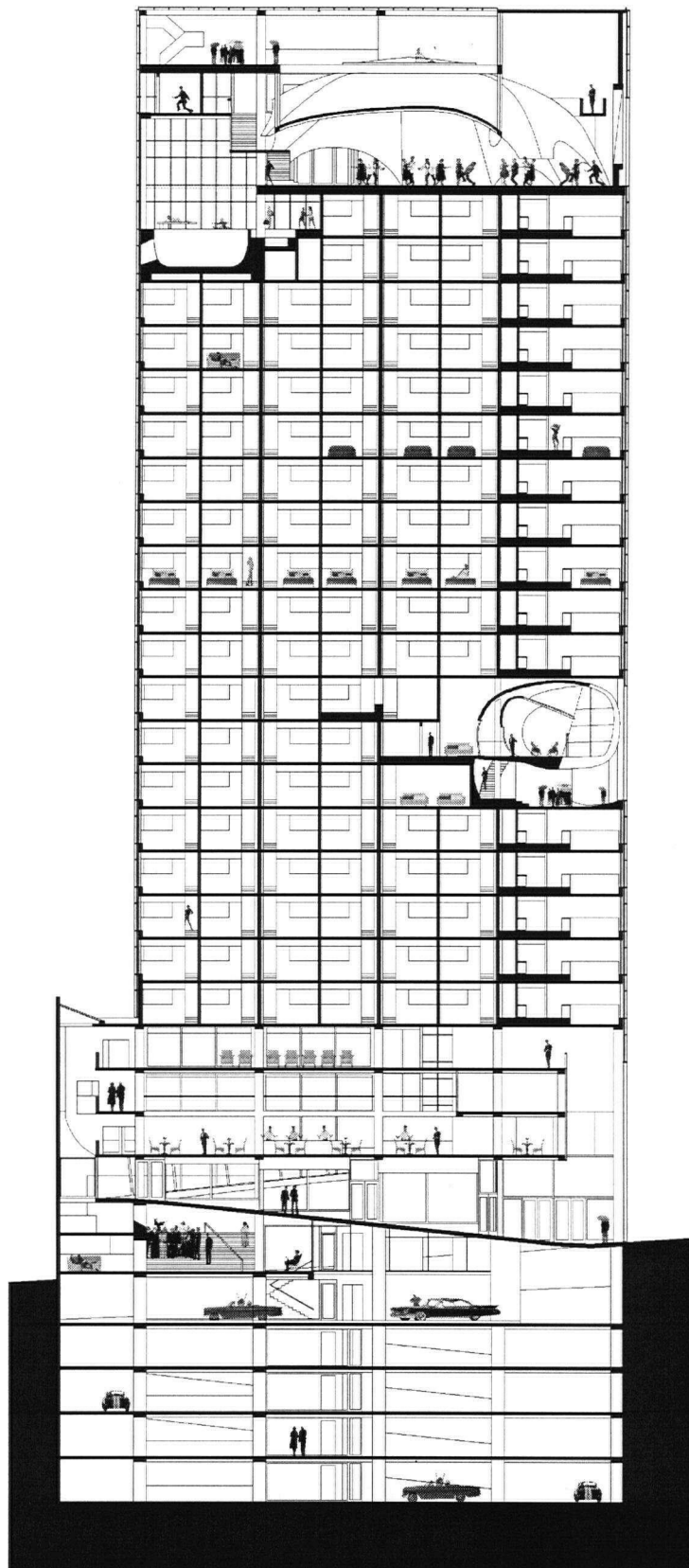
## TABLE OF CONTENTS

|                                                                                  |     |
|----------------------------------------------------------------------------------|-----|
| Abstract                                                                         | ii  |
| Table of Contents                                                                | iii |
| Acknowledgment                                                                   | v   |
| Section, Looking North                                                           | 1   |
| Section, Looking West Through Swimming Pool and Lobby                            |     |
| Section, Looking West Through Umbrella, Loggia, Terrace, Shops and Porte Cochere |     |
| Plan, Roof                                                                       |     |
| Plan, Terrace                                                                    |     |
| Plan, Umbrella Foyer                                                             |     |
| Plan, Umbrella                                                                   | 2   |
| Section, Looking West Through Umbrella, Corkscrew Lounge and Terrace             |     |
| Elevation, Broughton Street                                                      |     |
| Photograph, Model Seen From Robson Street Looking West                           |     |
| Perspective, Interior of Umbrella                                                |     |
| Plan, Pool                                                                       |     |
| Plan, Below Pool                                                                 |     |
| Plan, Typical Upper                                                              | 3   |
| Elevation, Robson Street                                                         |     |
| Perspective, Corkscrew Lounge and Terrace                                        |     |
| Detail, Building Skin Axonometric                                                |     |
| Photograph, Model Seen From Broughton Street Looking North                       |     |
| Plan, Upper Corkscrew                                                            |     |
| Plan, Corkscrew Lounge                                                           |     |
| Plan, Corkscrew Terrace                                                          |     |
| Perspective, Hotel Room Vanity                                                   |     |
| Plan, Typical Lower                                                              | 4   |
| Elevation, North                                                                 |     |

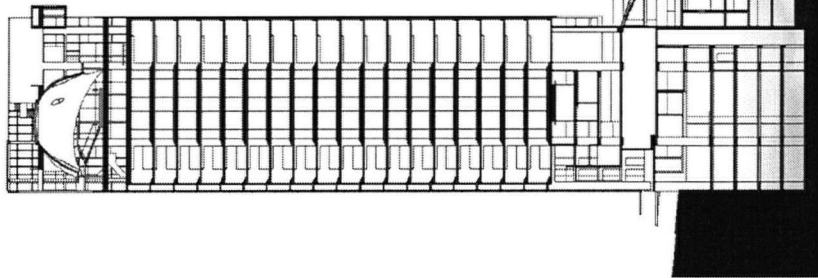
|                                                |   |
|------------------------------------------------|---|
| Elevation, West                                |   |
| Plan, Above Meeting Room Two                   |   |
| Plan, Meeting Room Two                         |   |
| Plan, Meeting Room One                         |   |
| Plan, Terrace Restaurant                       | 5 |
| Perspective, Hotel Room Living Room            |   |
| Detail, Worm's Eye Axonometric of Hotel Room   |   |
| Plan, Umbrella Context                         |   |
| Plan, Corkscrew Context                        |   |
| Plan, Robson Concourse                         |   |
| Plan, Long Bar                                 |   |
| Plan, Lobby                                    | 6 |
| Plan, Lobby Context                            |   |
| Section, Through Robson Street Looking North   |   |
| Section, Through Broughton Street Looking West |   |
| Plan, Porte Cochere                            |   |
| Plan, Lower Parking                            |   |
| Plan, Lower Parking 2                          | 7 |

## ACKNOWLEDGEMENT

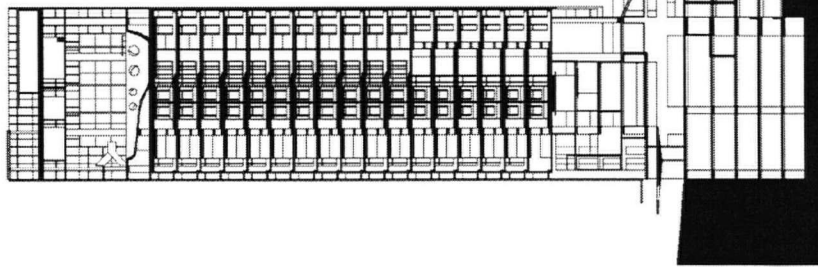
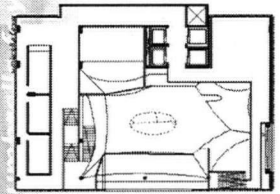
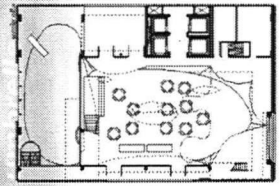
I would like to thank my committee, George Wagner (chair), John Patkau, Elaine Didyk, and Warren Techentin. I would also like to acknowledge the help of Andrew Furman, Leslie Barrett, Shawn Bleet, Mathew Grady, Amanda Levy, Chris Grimley, Hugh Bitz, Julia Roemer, Cedric Burgers, Craig Simms, Rochelle Bacigalupo, Nicholas Osenton, and Tania Percy for their help towards my final presentation.



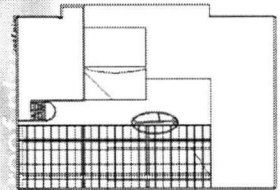
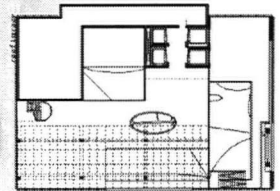
*section looking north through umbrella,  
swimming pool, corkscrew lounge,  
terrace, lobby, and porte cochere*



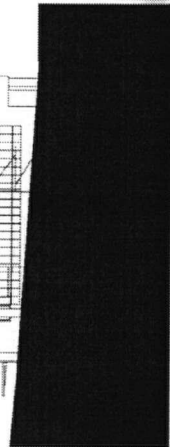
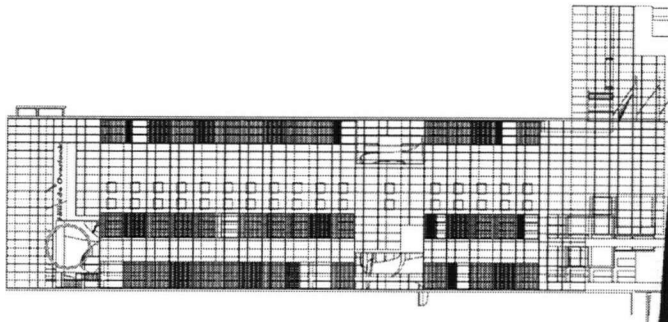
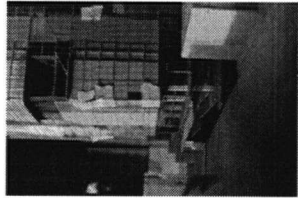
section through lobby, terrace, and lobby shops and porte cochere



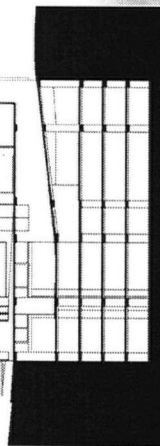
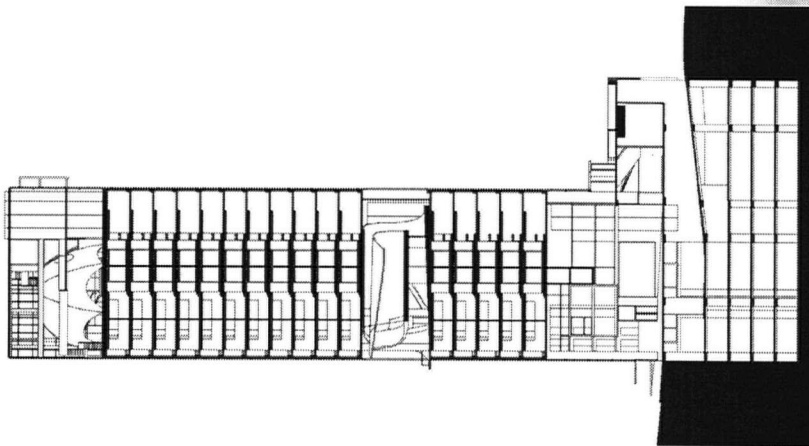
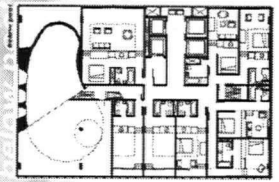
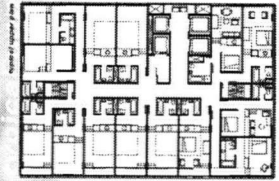
section through lobby, terrace, and lobby shops and porte cochere



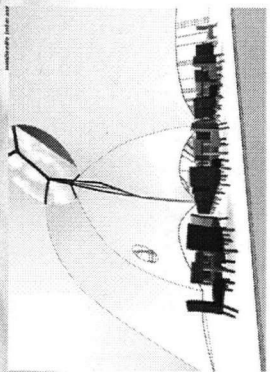
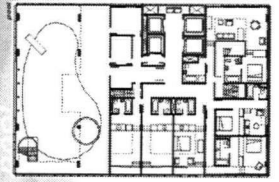


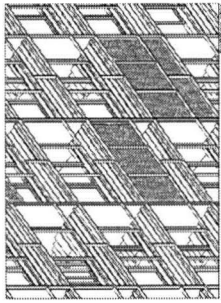
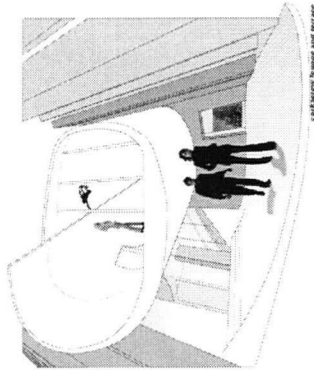
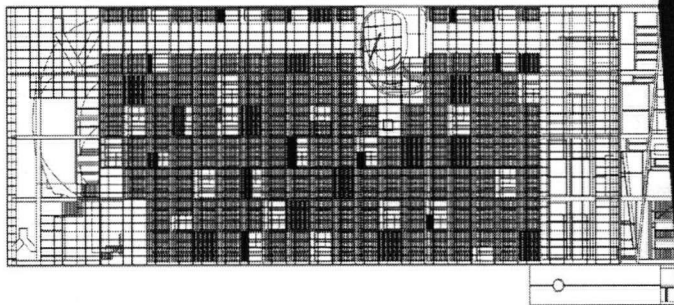


brought to elevation



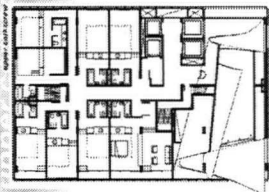
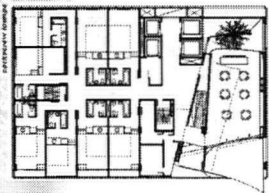
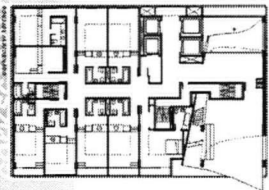
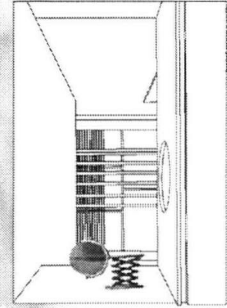
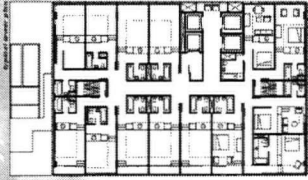
colleagues, lounge and terrace, and porte cochere entry



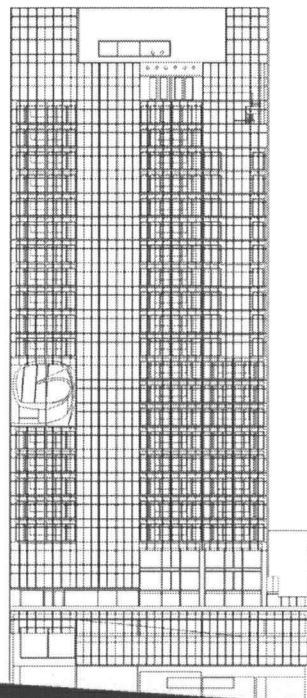


obson elevation

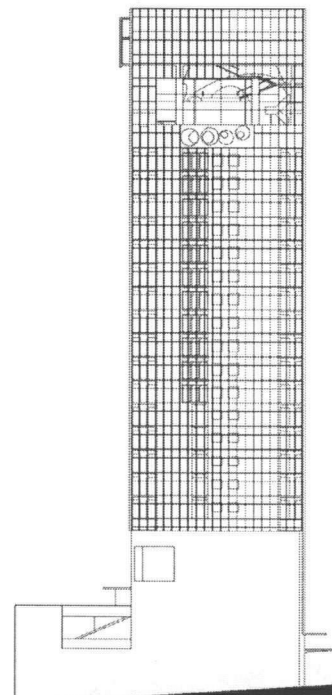
typical lower plan



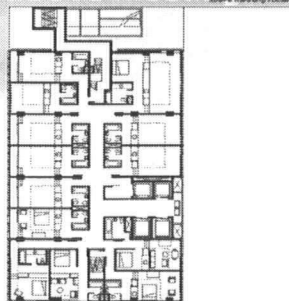
north  
elevation



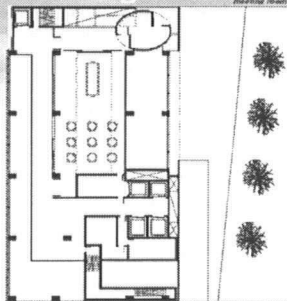
west elevation  
meeting room 1



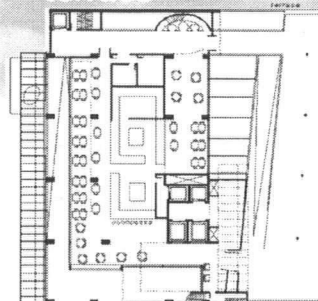
above meeting room 2

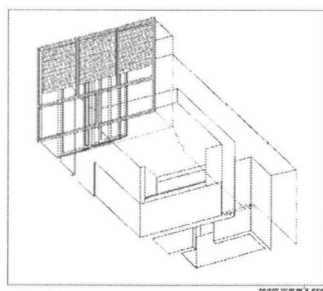
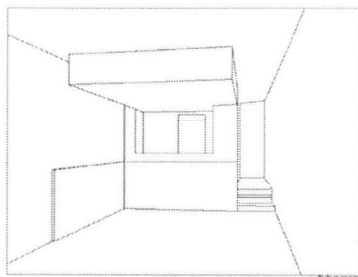


meeting room 2

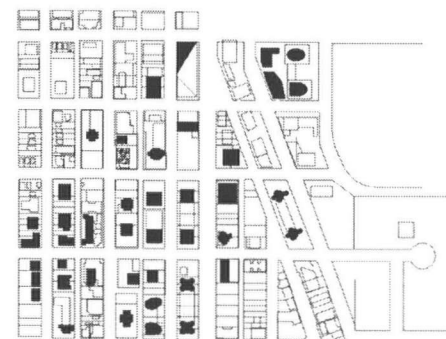


terrace



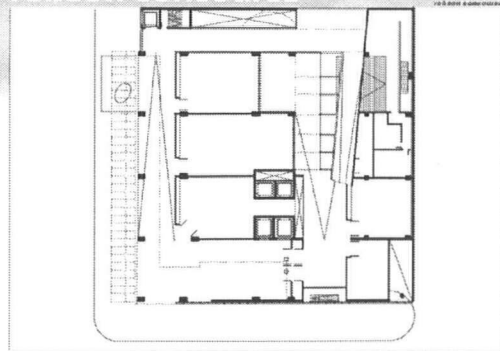


*umbrella context plan*

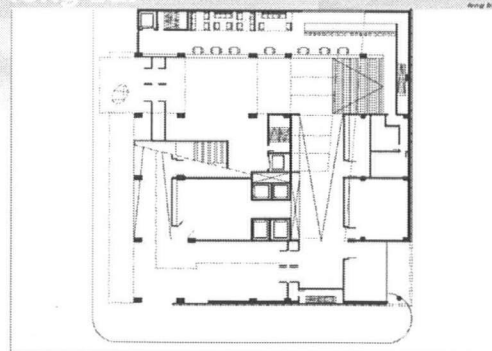


*corkscrew context plan*

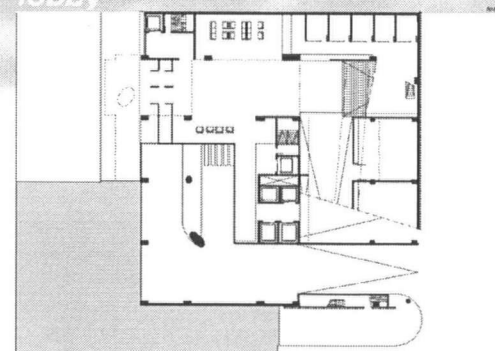
*robson concourse*

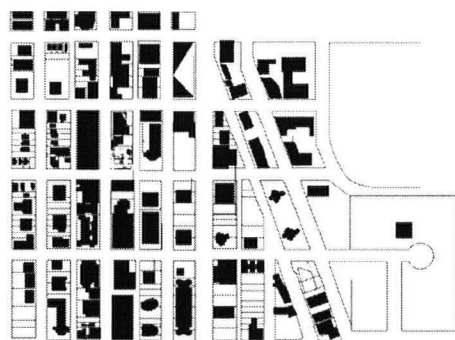


*long bar*



*lobby*





*lobby context plan*



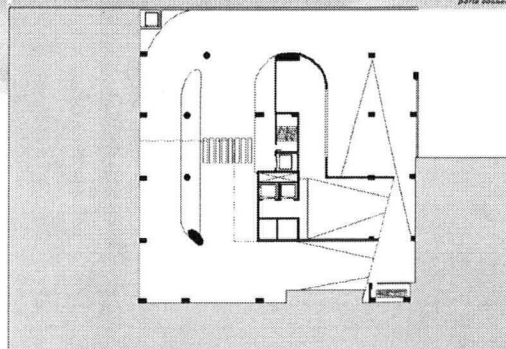
*section through robson street  
looking north*



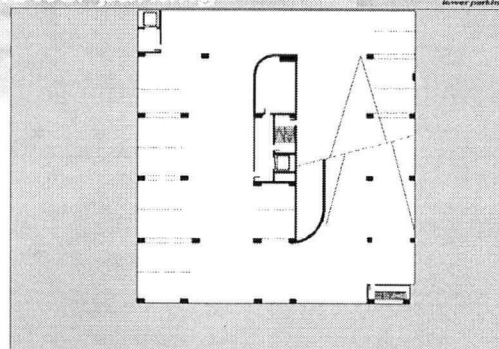
*section through broughton street  
looking west*

*overlook: a hotel on robson street  
brian wakelin thesis january 1998*

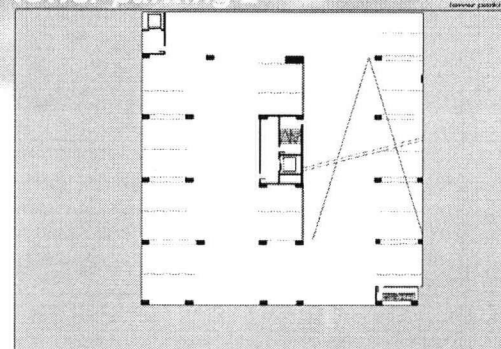
*porte cochere*



*lower parking*



*lower parking 2*



overlook