

LINKS: A PUBLIC CLUBHOUSE FOR THE UNIVERSITY  
OF BRITISH COLUMBIA GOLF COURSE

by

MURRAY KEITH GILMOUR

B.A., The University of British Columbia, 1993

A THESIS SUBMITTED IN PARTIAL FULFILLMENT OF  
THE REQUIREMENTS FOR THE DEGREE OF  
MASTER OF ARCHITECTURE

in

THE FACULTY OF GRADUATE STUDIES

School of Architecture

We accept this thesis as conforming to the required standard

THE UNIVERSITY OF BRITISH COLUMBIA

May 1998

© Murray Keith Gilmour, 1998

In presenting this thesis in partial fulfilment of the requirements for an advanced degree at the University of British Columbia, I agree that the Library shall make it freely available for reference and study. I further agree that permission for extensive copying of this thesis for scholarly purposes may be granted by the head of my department or by his or her representatives. It is understood that copying or publication of this thesis for financial gain shall not be allowed without my written permission.

~~Department of~~ SCHOOL OF ARCHITECTURE

The University of British Columbia  
Vancouver, Canada

Date MAY 11<sup>TH</sup> / 1998

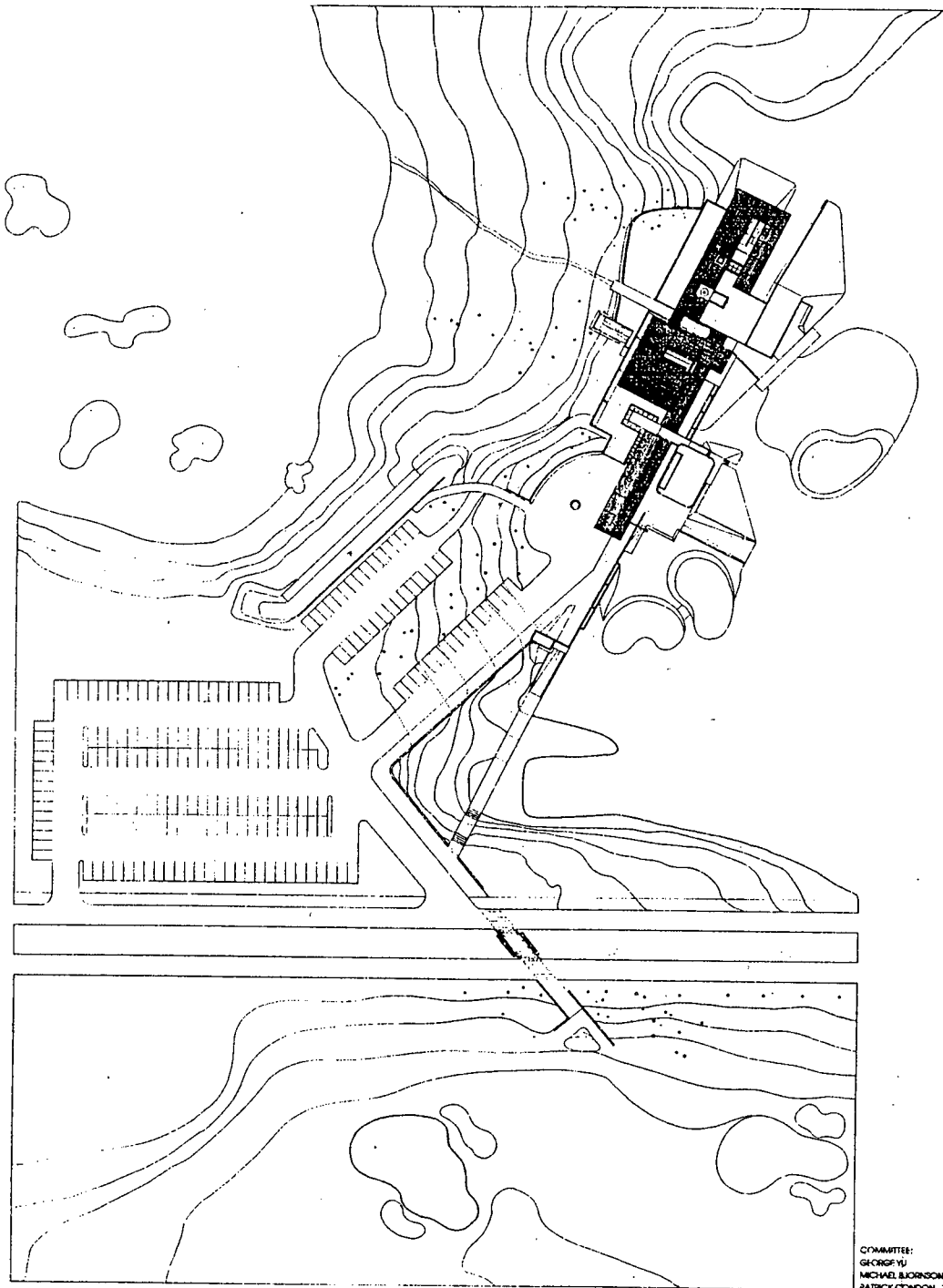
## ABSTRACT

The following thesis project is a proposed redesign of a public clubhouse for the University of British Columbia Golf Course, located in the University Endowment Lands. The intention of the thesis was to pursue a relationship between architecture and the designed or constructed landscape of the golf course. Such a connection was made through a series of landscape readings to formulate a conceptual beginning and framework for design. The investigation dissected the recreational landscape as an artificial fact, exposing the nature of the landscape into two categories: surface and object. Furthermore, movement through the recreational landscape was defined by an irregular linear trajectory. These landscape features were then explored for their inherent potential for an architecture that makes a connection to the landscape while simultaneously meeting the demands of a highly scripted program. The resulting architecture is composed of both objects and surfaces all of which have a specific programmatic function and connection to the landscape. In essence, the building can be divided into five architectural elements or strategies: path/armature, planar roof surface, pavilion object, spatial ordering device and finally earth work.

## TABLE OF CONTENTS

- ii. Abstract
- iii. Table of Contents
- i. Site Plan
- ii. Main Floor Plan and Below Grade Plan
- iii. Sections: A,B,C & D
- iv. Sections: E,F,G & H
- v. East and West Elevations
- vi. Views of Model

# SITE PLAN

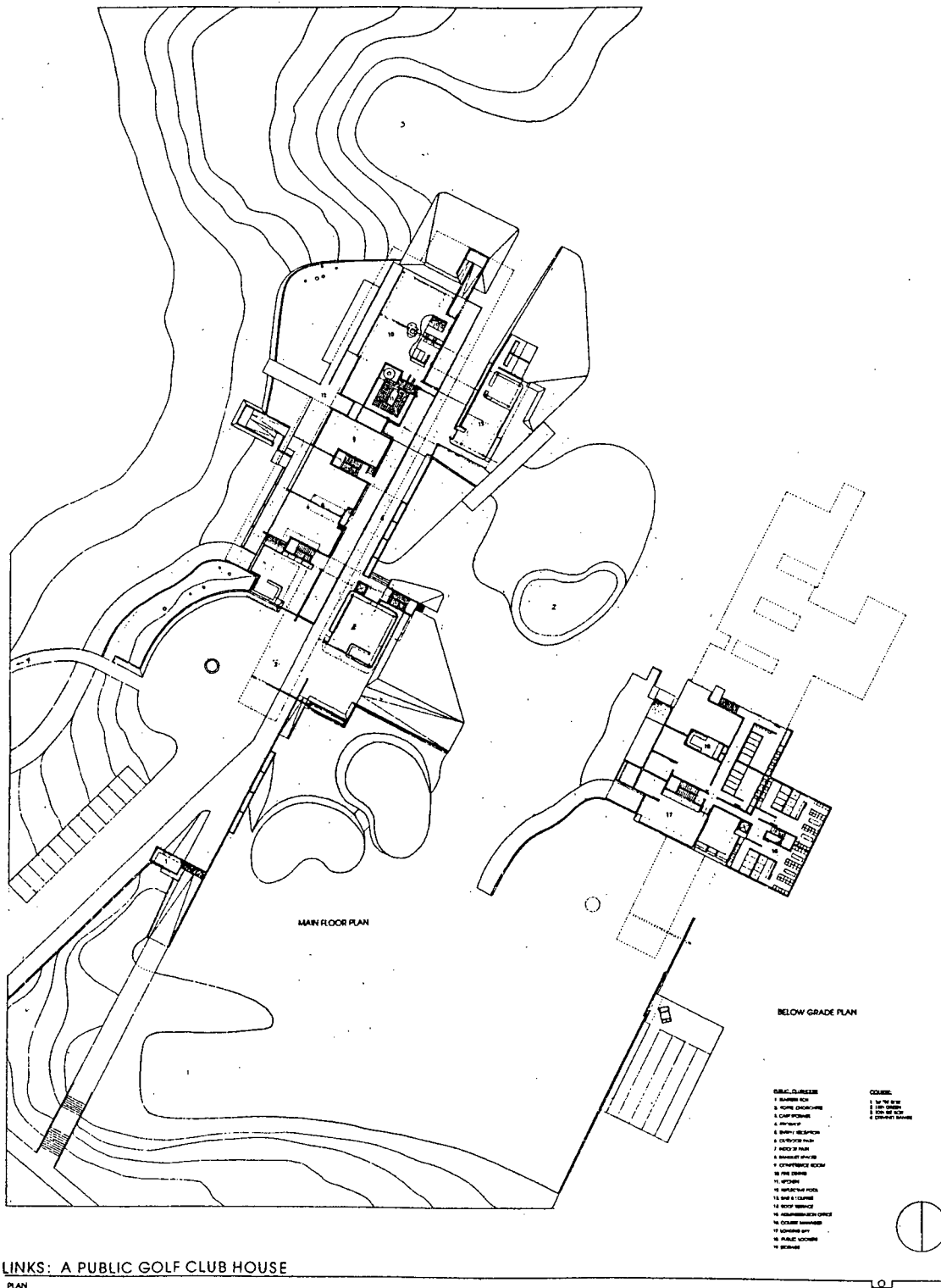


COMMITTEE:  
GEORGE YU  
MICHAEL BJORNSON  
PATRICK CONDON



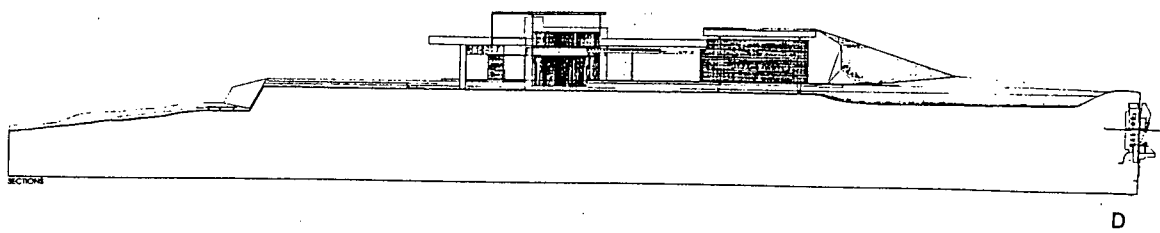
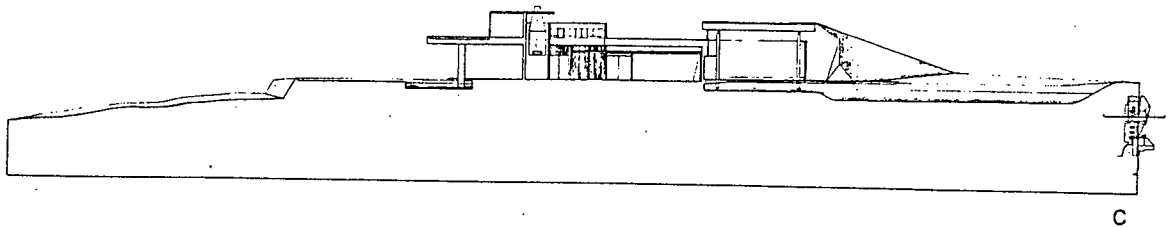
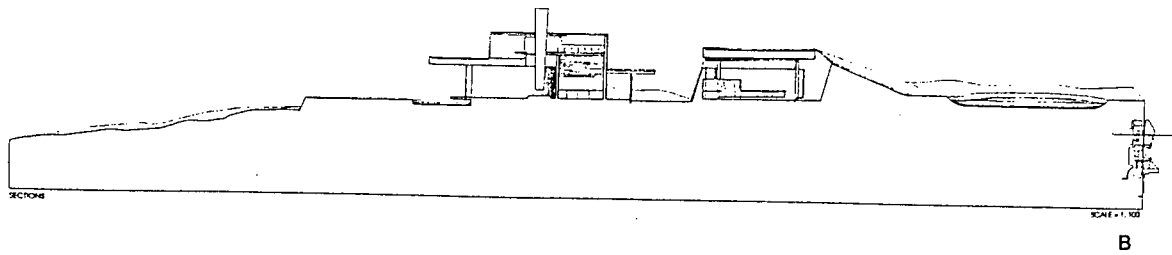
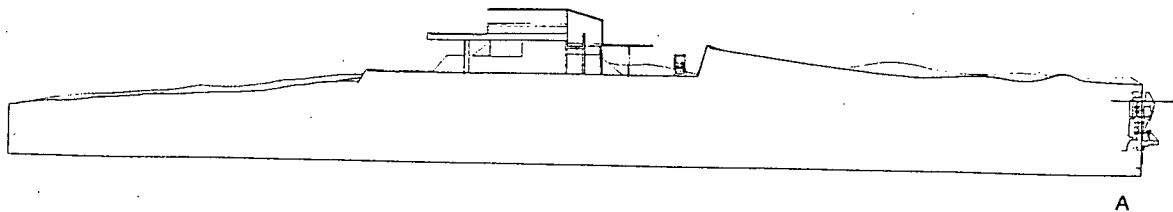
LINKS: A PUBLIC GOLF CLUB HOUSE  
SITE PLAN

MURRAY GILMOUR L.S.

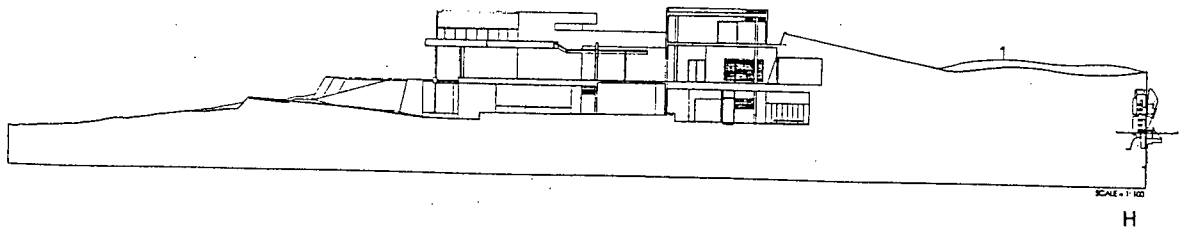
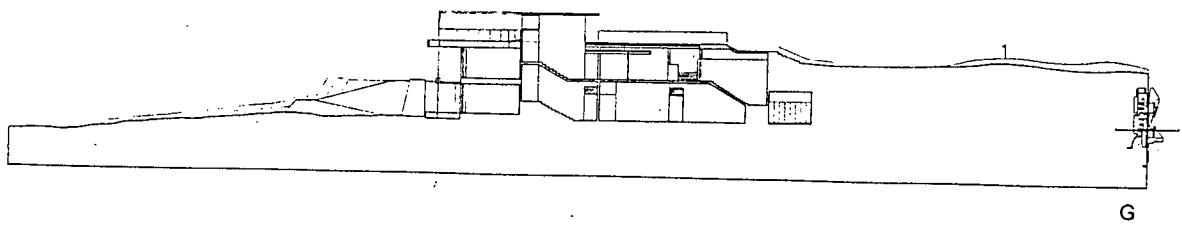
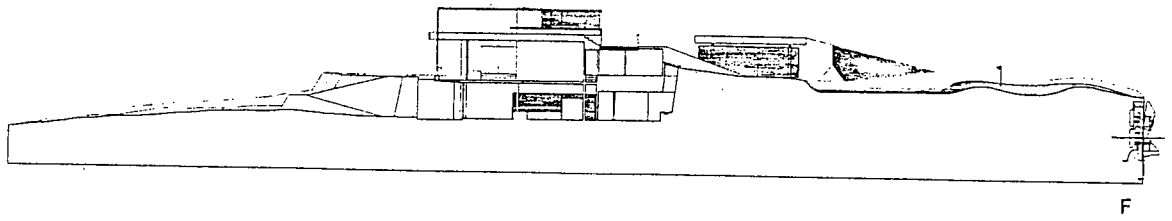
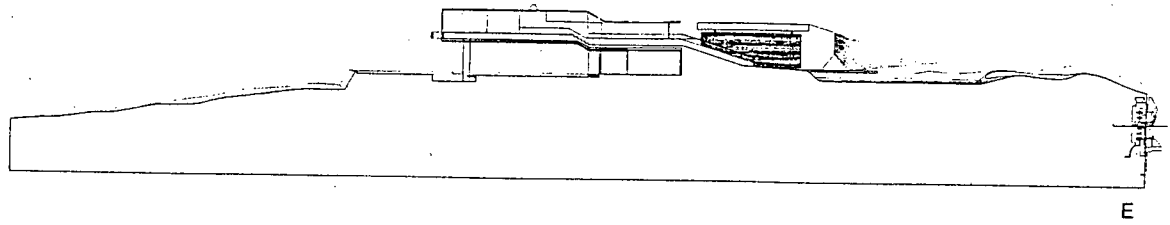


LINKS: A PUBLIC GOLF CLUB HOUSE  
PLAN

# SECTIONS

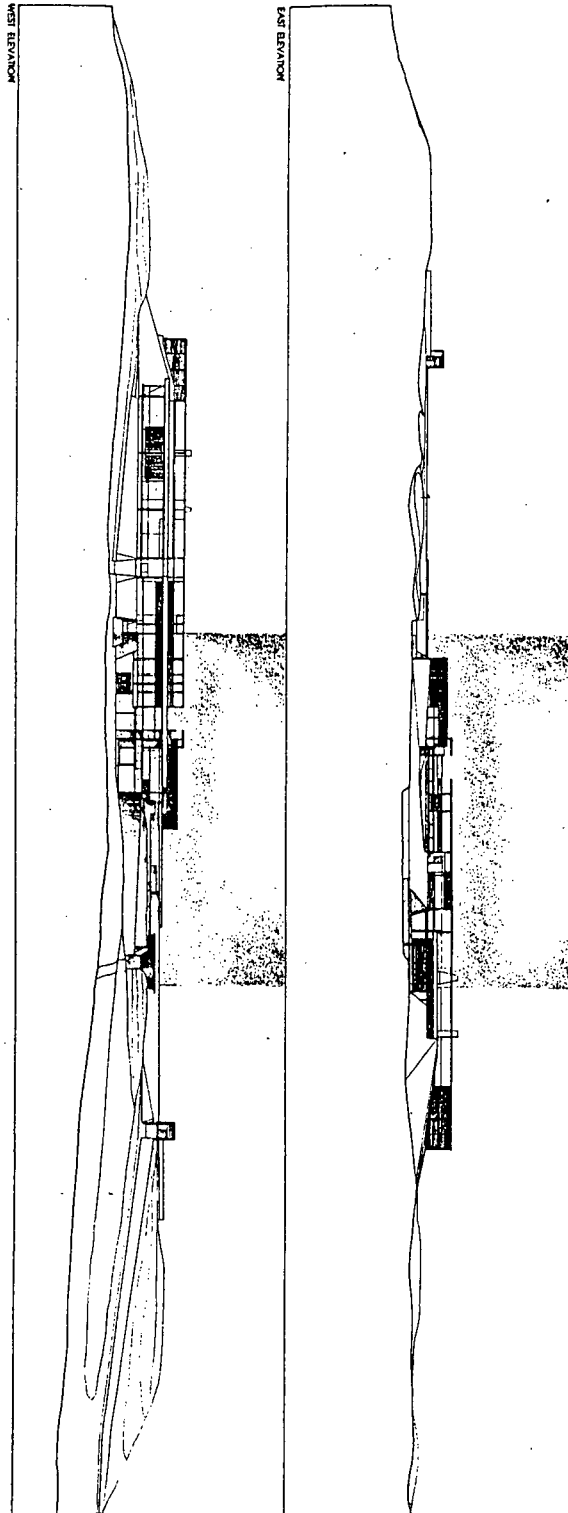


# SECTIONS





# EAST AND WEST ELEVATIONS



## VIEWS OF MODEL



South Elevation View



Roof Plan View



North Elevation View