

EMBODIMENT:  
THE LIVED BODY IN MEDICINE AND ARCHITECTURE

by

TERI JILL ANHOLT

B.Sc. The University of British Columbia, 1990

A THESIS SUBMITTED IN PARTIAL FULFILLMENT OF

THE REQUIREMENTS FOR THE DEGREE OF  
MASTER OF ARCHITECTURE

in

THE FACULTY OF GRADUATE STUDIES

School of Architecture

We accept this thesis as conforming to the required standard

THE UNIVERSITY OF BRITISH COLUMBIA

July 1996

© Teri Jill Anholt, 1996

In presenting this thesis in partial fulfilment of the requirements for an advanced degree at the University of British Columbia, I agree that the Library shall make it freely available for reference and study. I further agree that permission for extensive copying of this thesis for scholarly purposes may be granted by the head of my department or by his or her representatives. It is understood that copying or publication of this thesis for financial gain shall not be allowed without my written permission.

Department of Architecture

The University of British Columbia  
Vancouver, Canada

Date July 26, 1996.

## ABSTRACT

This thesis project is about reinstating the human body into healthcare architecture. Implicit in this intention are ideas about tactility, intimacy, and movement as experiential aspects of architectural perception. The project attempts to bring physical form to a new paradigm about wholistic healthcare involving a continuum that ranges from a reactive approach to health involving treatment of injury and disability to a proactive approach to health involving preventative and fitness programs.

## TABLE OF CONTENTS

Abstract	ii
Table of Contents	iii
List of Figures	iv
Acknowledgement	v
Site Plan	1
Ground Floor Plan	2
Second Floor Plan	3
Context Elevations	4
Project Sections	6
Project Elevations	10
Concept Collage	13
Context Model	14
Project Model	15

## LIST OF FIGURES

Figure 1	Site Plan Including Proposed Building	1
Figure 2	Ground Floor Plan	2
Figure 3	Second Floor Plan	3
Figure 4	South Elevation Including Existing Daycare Building	4
Figure 5	North Elevation Including Existing Parking Garage	5
Figure 6	North Section Through Library and Meeting Room	6
Figure 7	South Section Through Courtyard	7
Figure 8	North Section Through Gym and Change Room	8
Figure 9	West Section Through Gym and Meeting Room	9
Figure 10	South Elevation	10
Figure 11	North Elevation	11
Figure 12	East Elevation	12
Figure 13	Concept Collage of Running Track	13
Figure 14	Context Model	14
Figure 15	View of Project Model Without Roofs	15
Figure 16	Detail of Courtyard Entrance	16
Figure 17	Detail of Physiotherapy Unit	17

## ACKNOWLEDGEMENT

I wish to thank Patricia Patkau, Sandy Hirshen, Sherry McKay, and Andy Butler for their insight, encouragement, and patience.

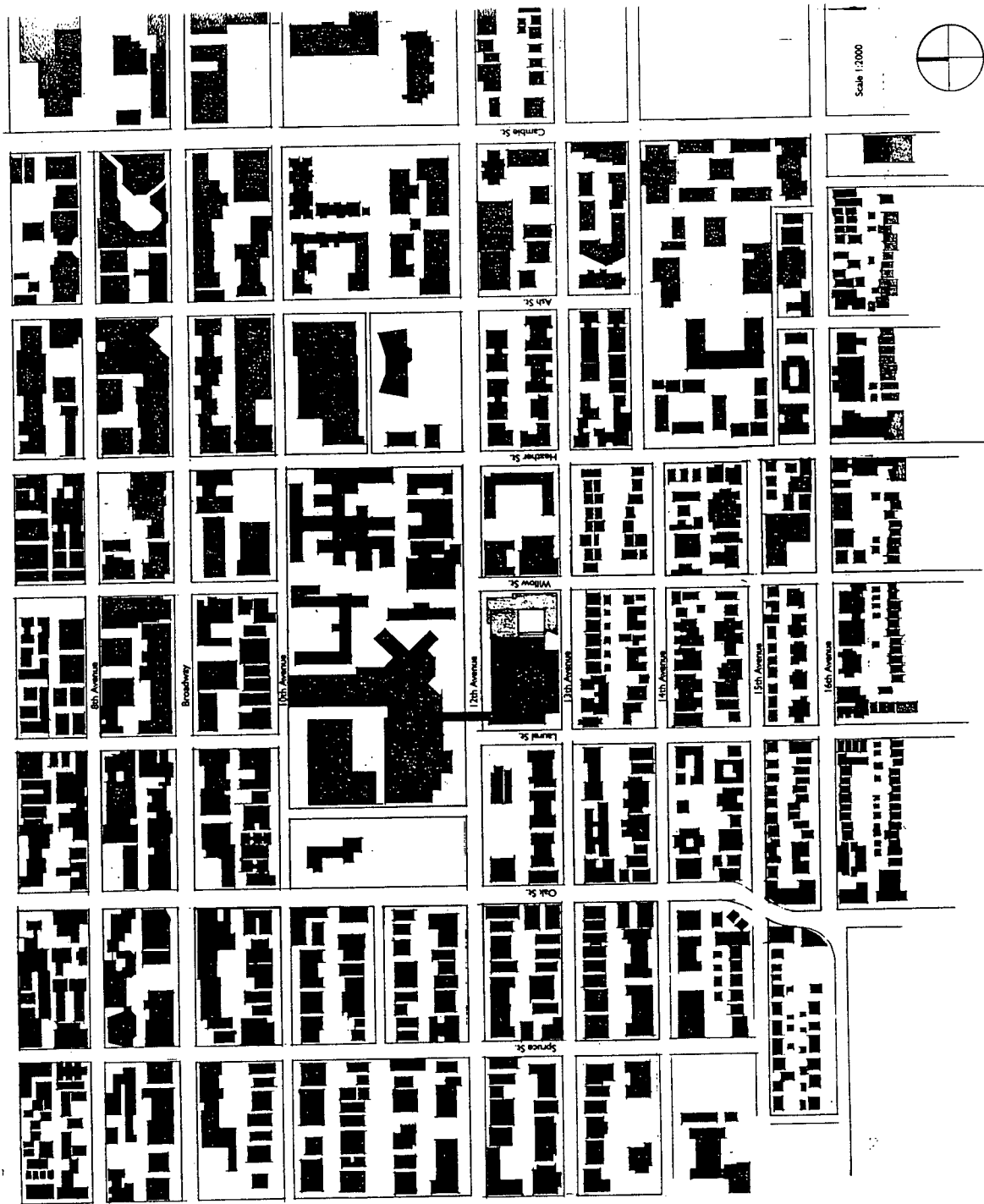


Figure 1: Site Plan Including Proposed Building

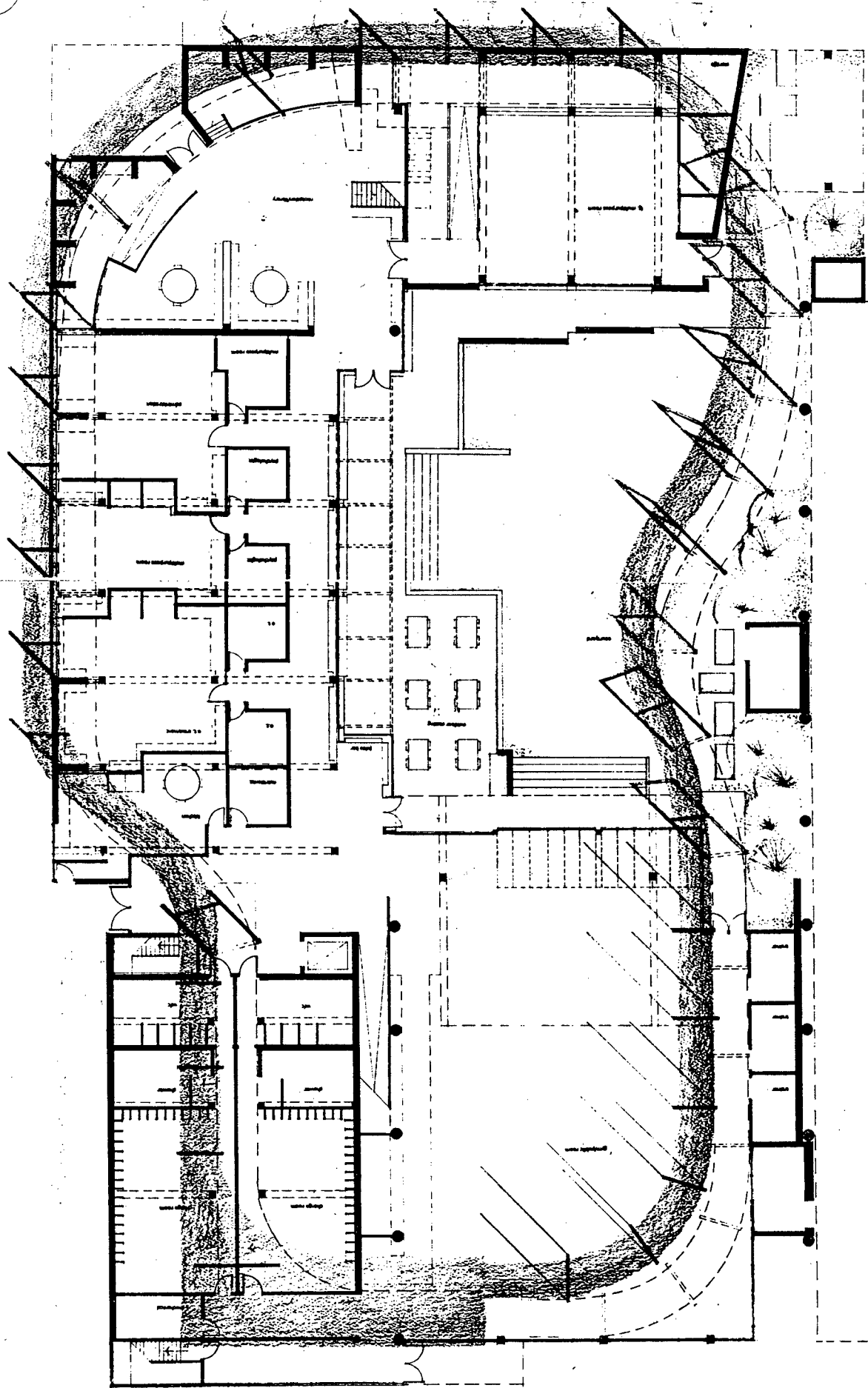


Figure 2: Ground Floor Plan



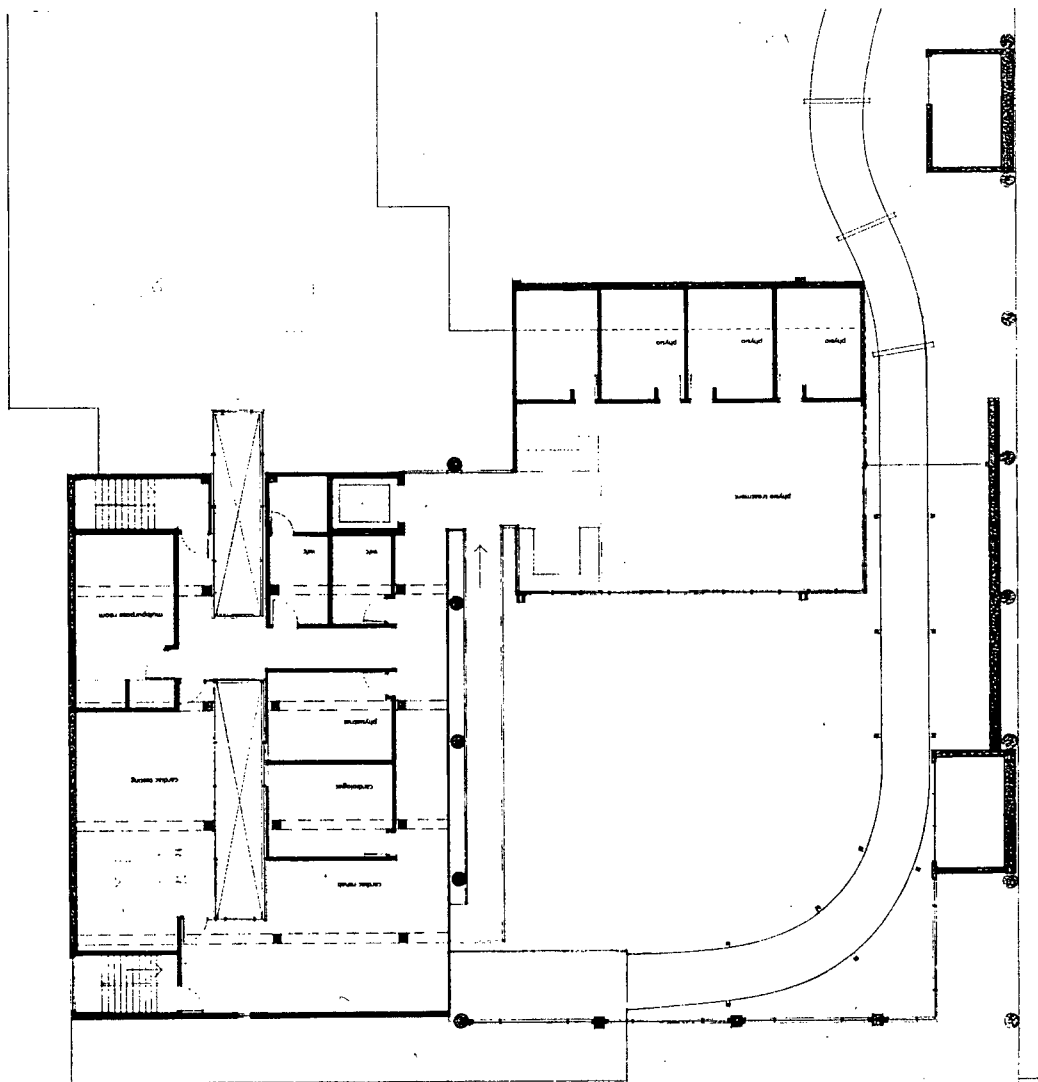


Figure 3: Second Floor Plan

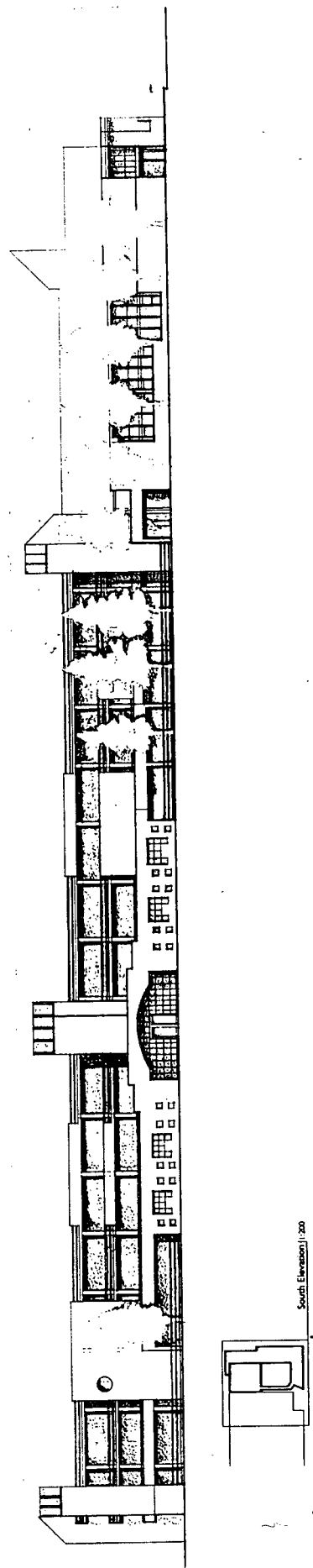


Figure 4: South Elevation Including Existing Daycare Building

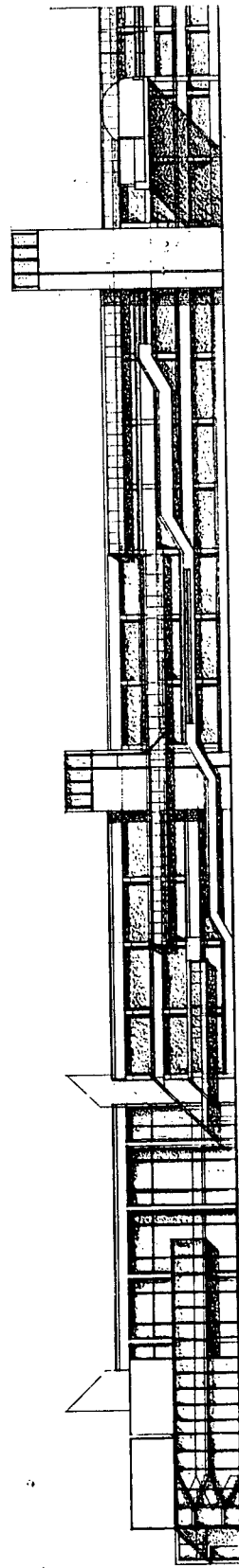


Figure 5: North Elevation Including Existing Parking Garage

1

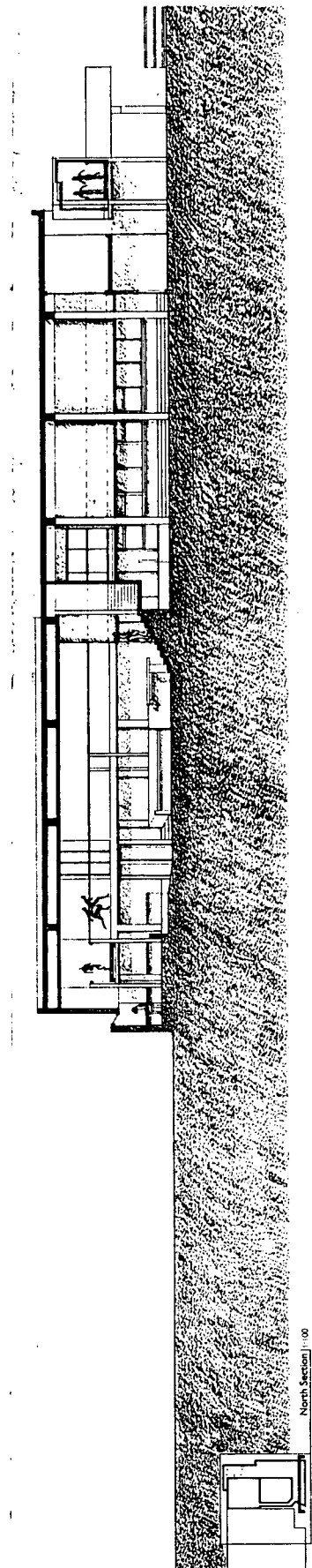


Figure 6: North Section Through Library and Meeting Room

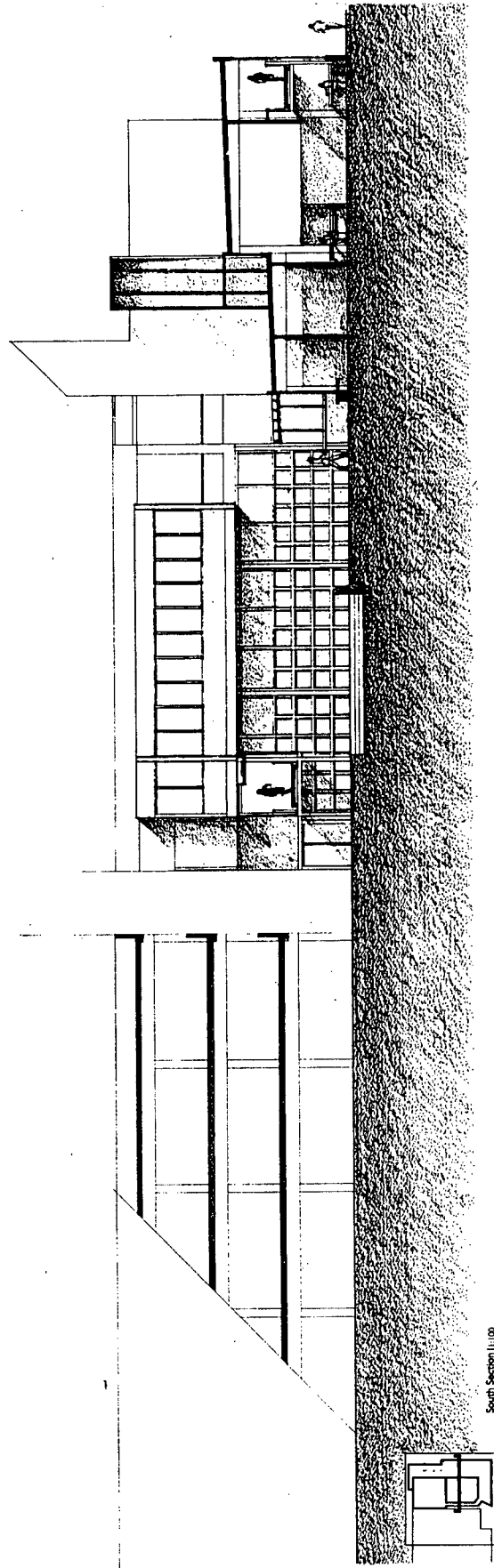


Figure 7: South Section Through Courtyard

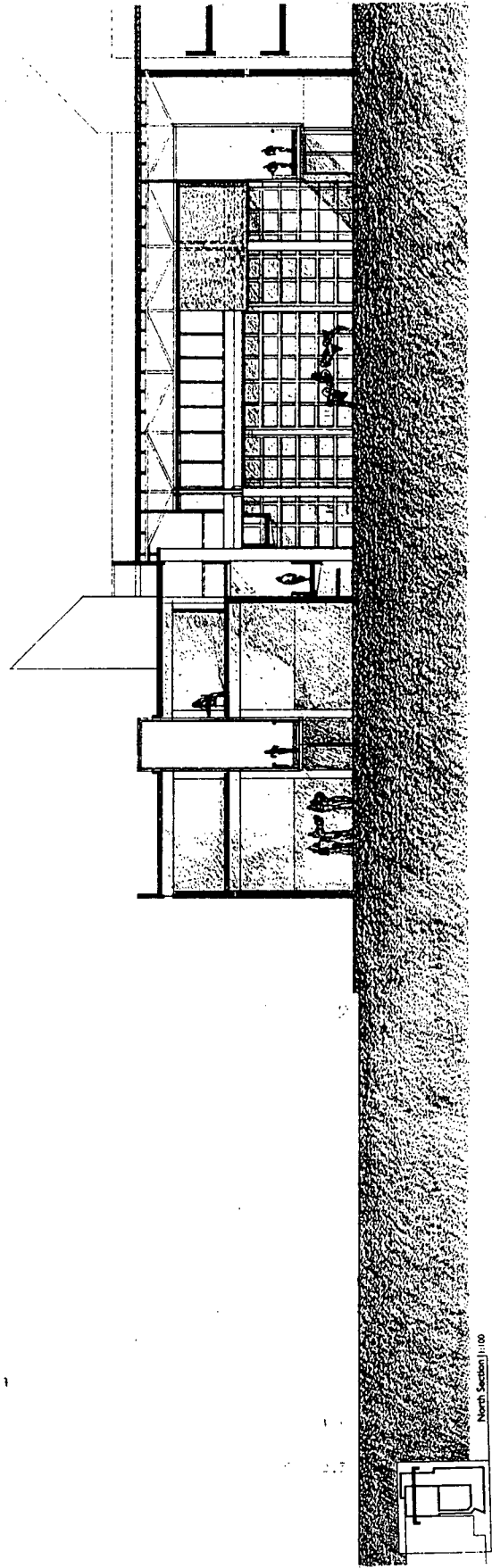


Figure 8: North Section Through Gym and Change Room

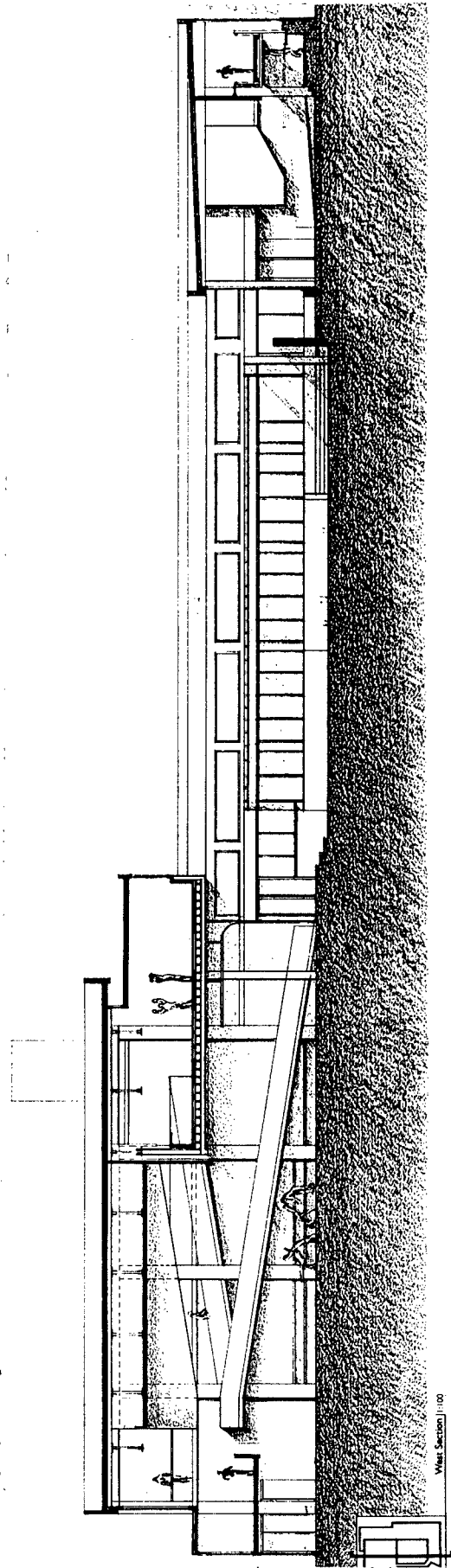


Figure 9: West Section Through Gym and Meeting Room

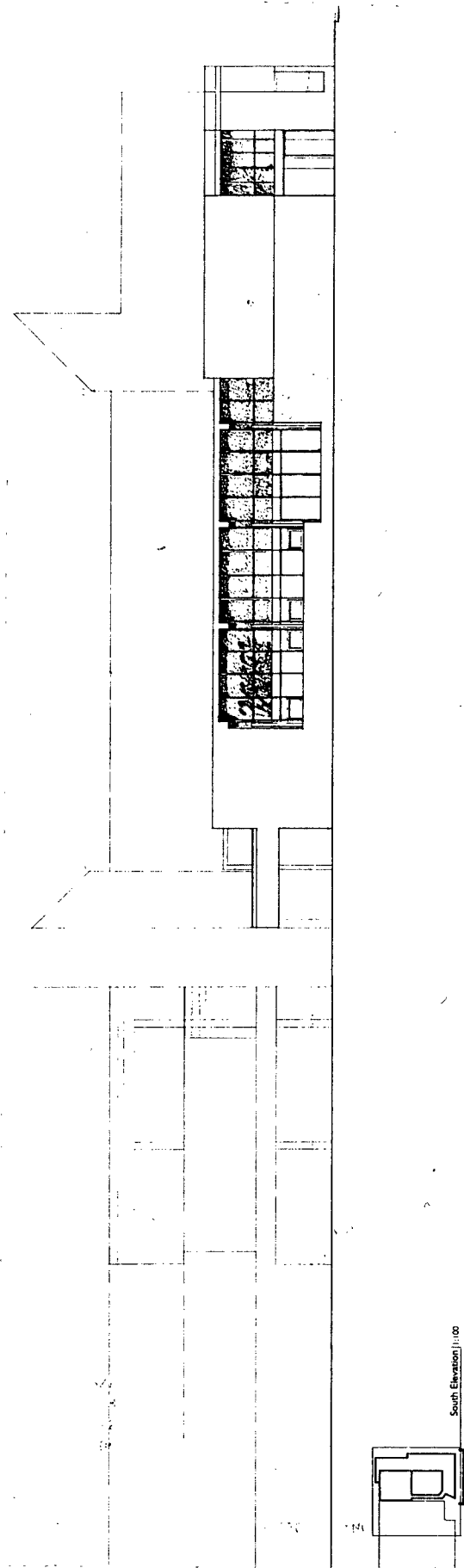


Figure 10: South Elevation



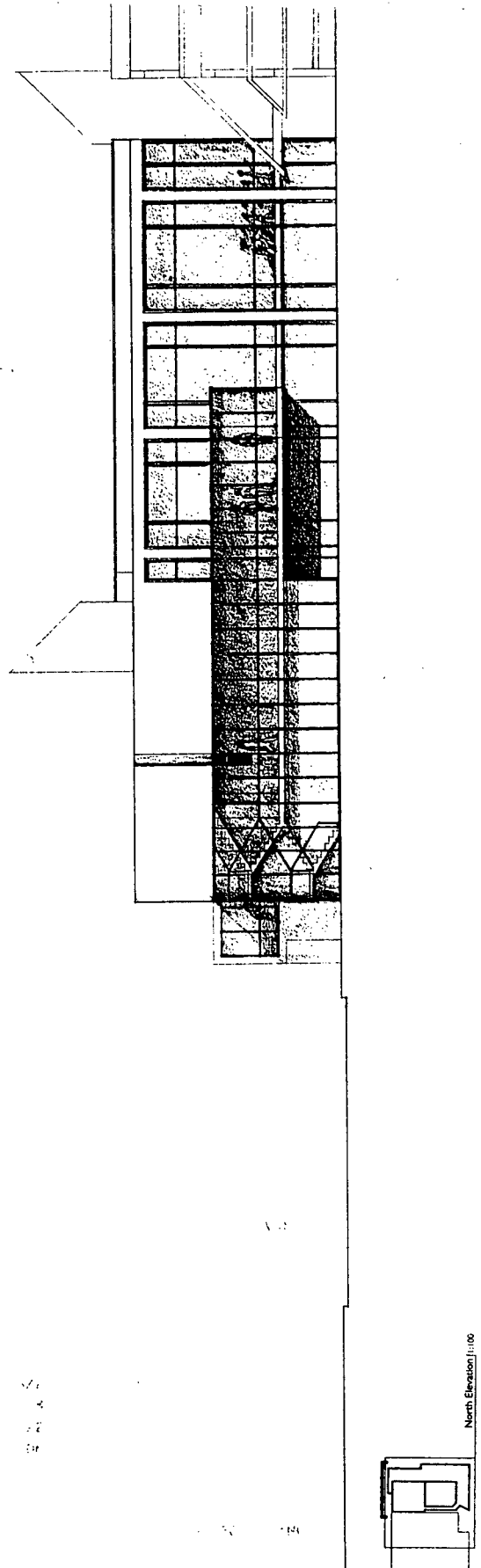


Figure 11: North Elevation

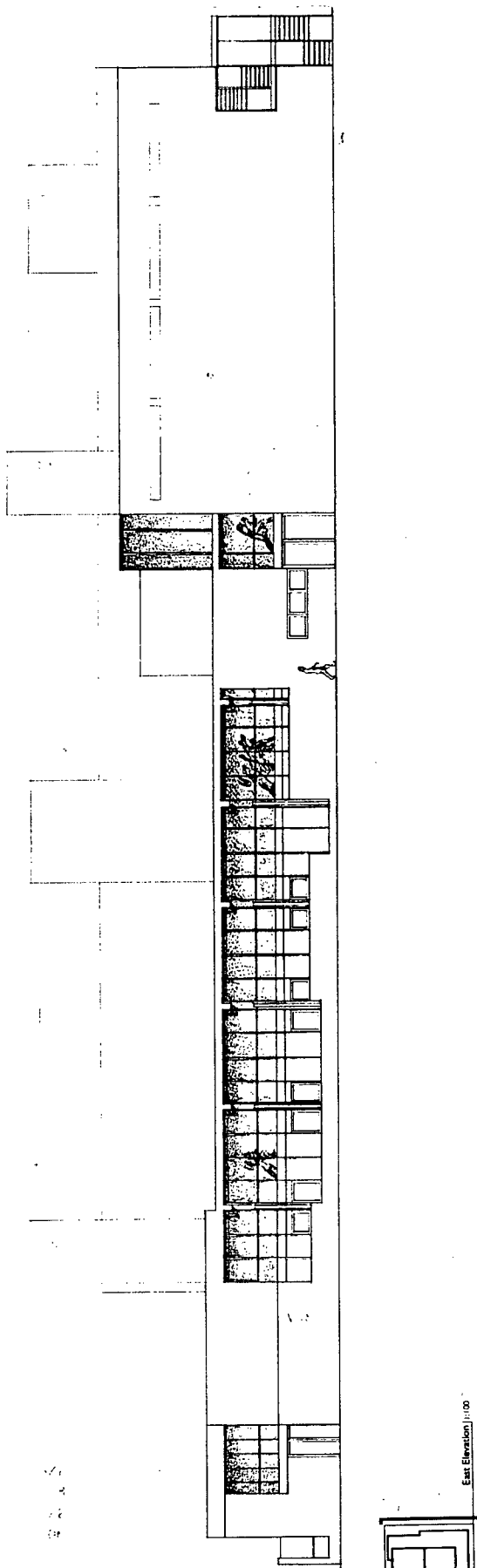


Figure 12: East Elevation

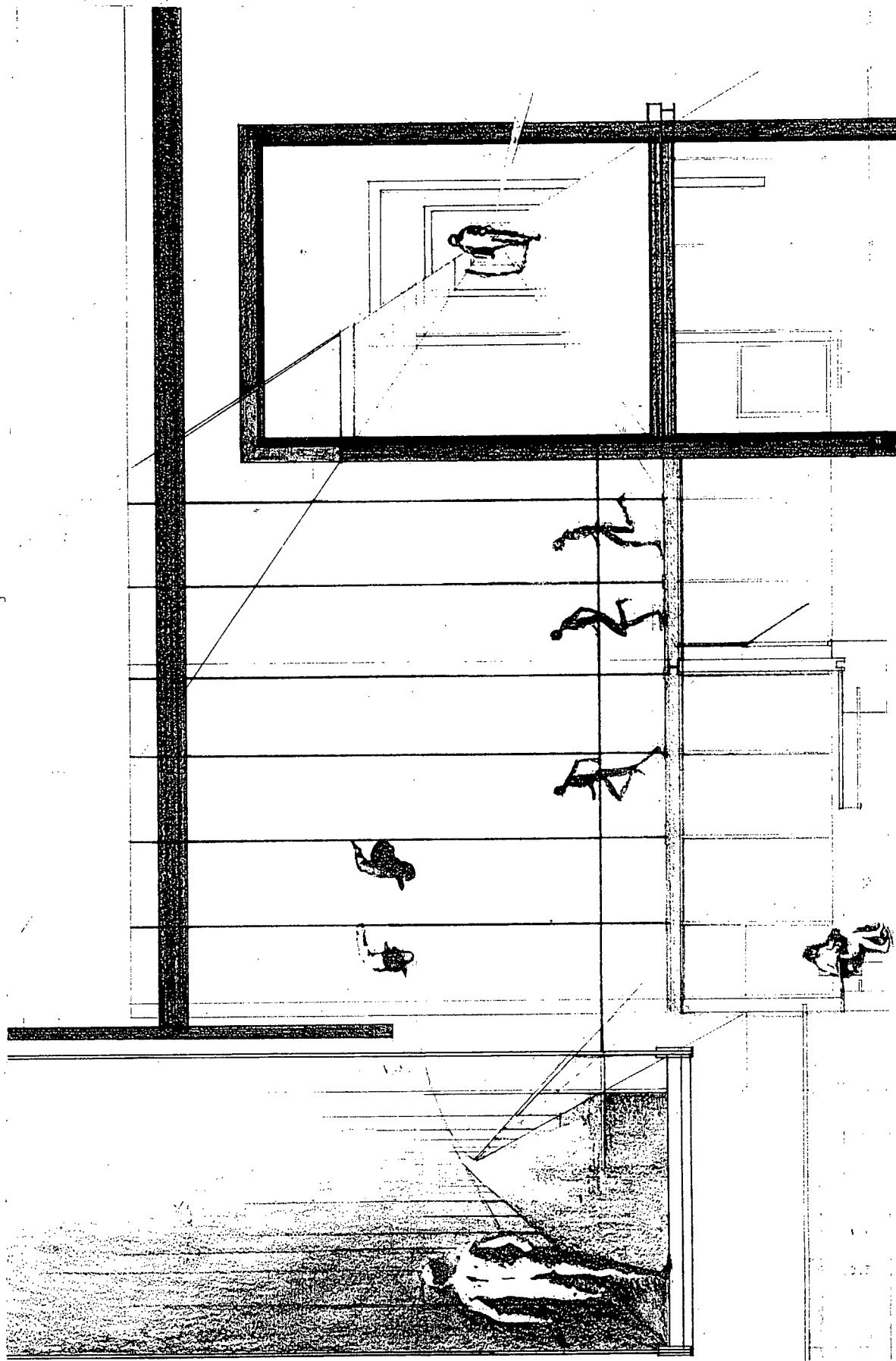


Figure 13: Concept Collage of Running Track

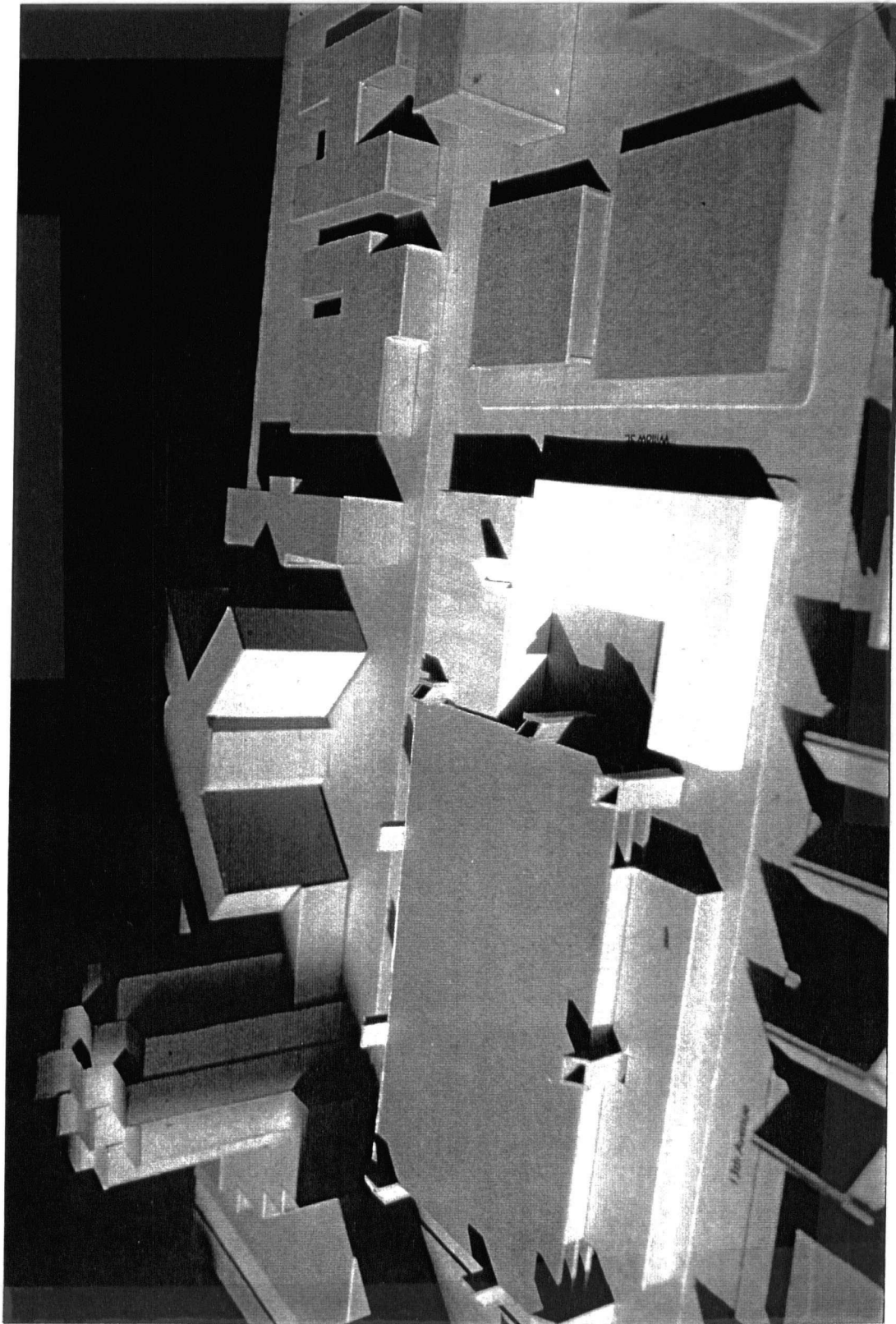


Figure 14: Context Model

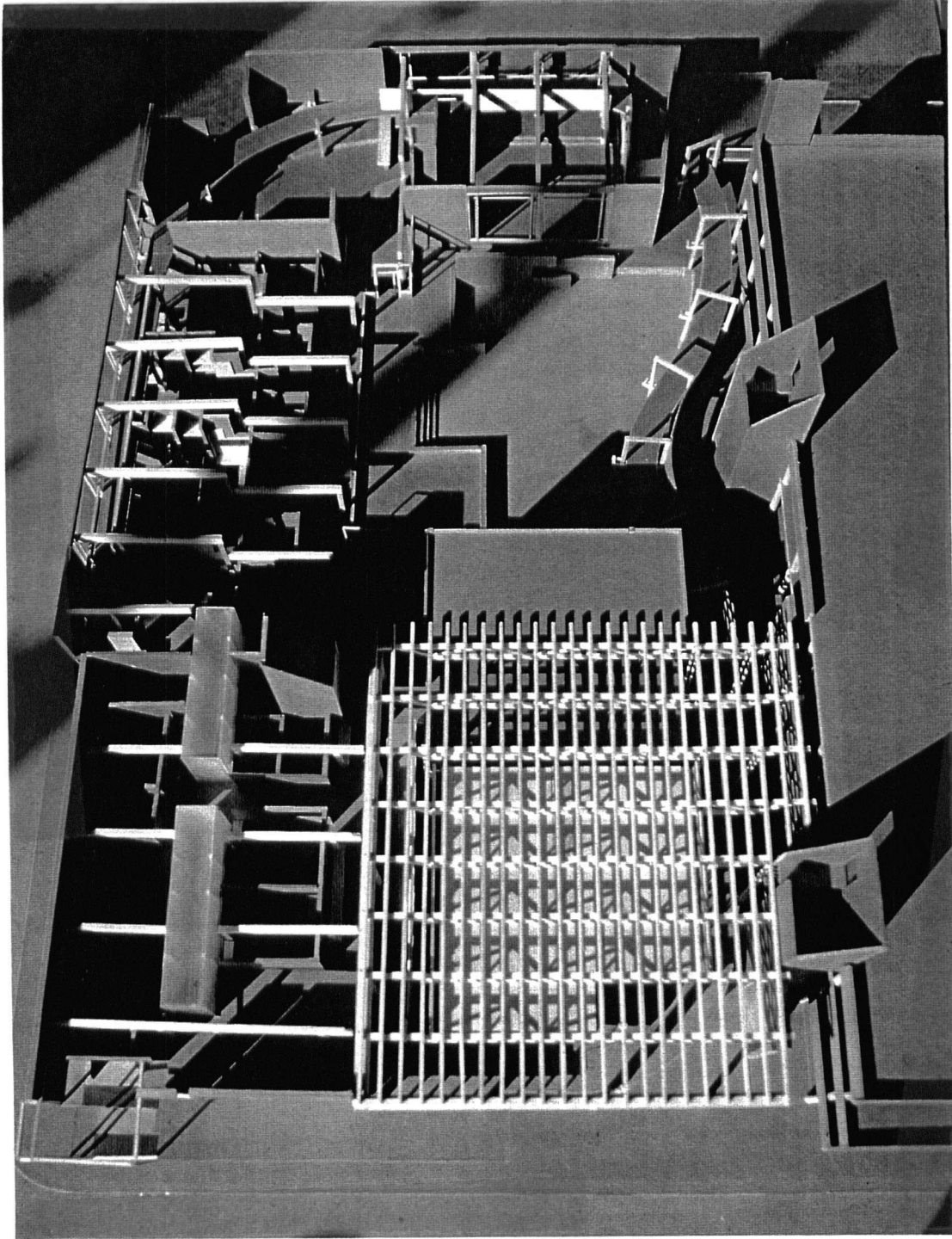


Figure 15: View of Project Model Without Roofs

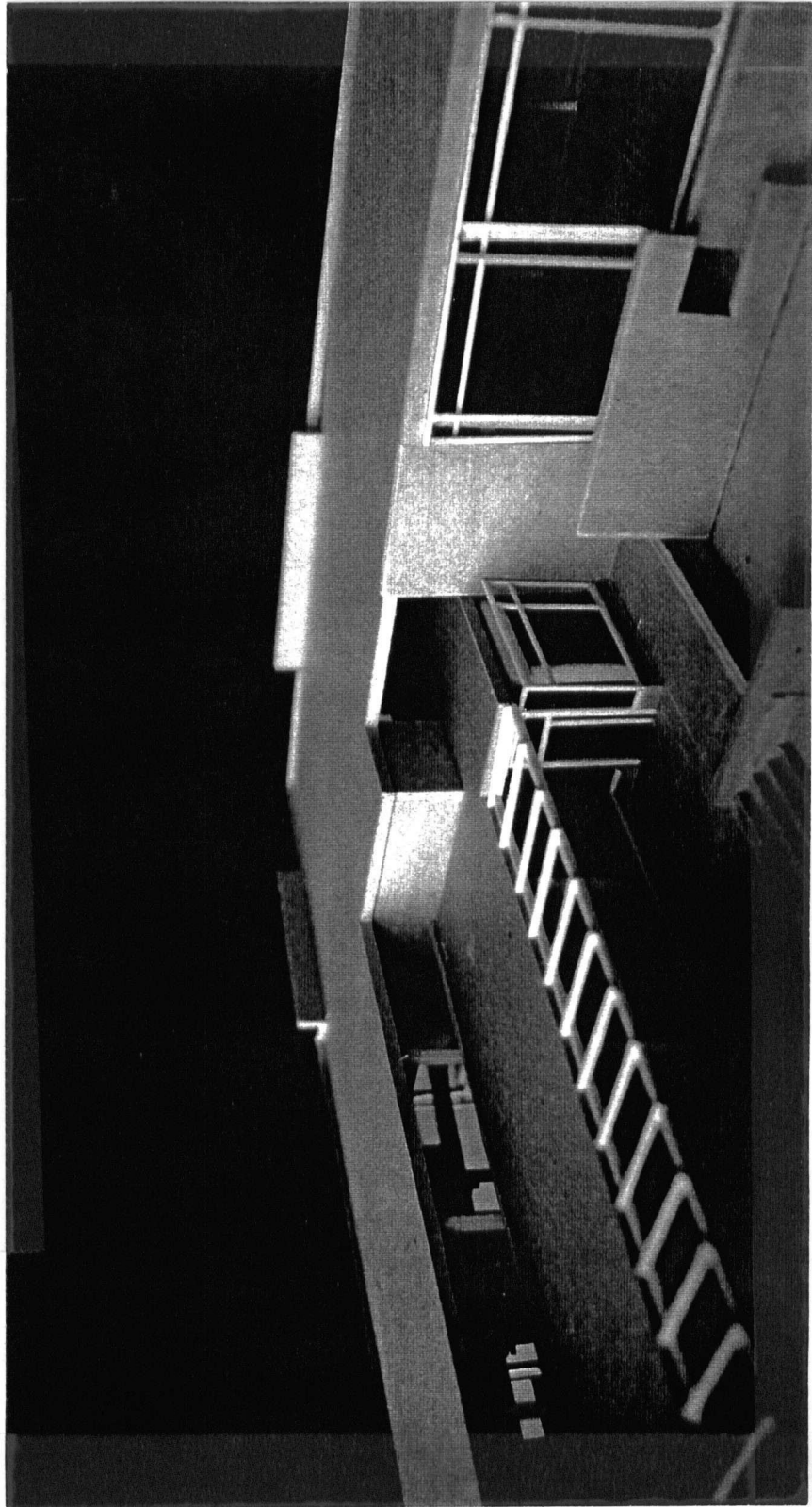


Figure 16: Detail of Courtyard Entrance



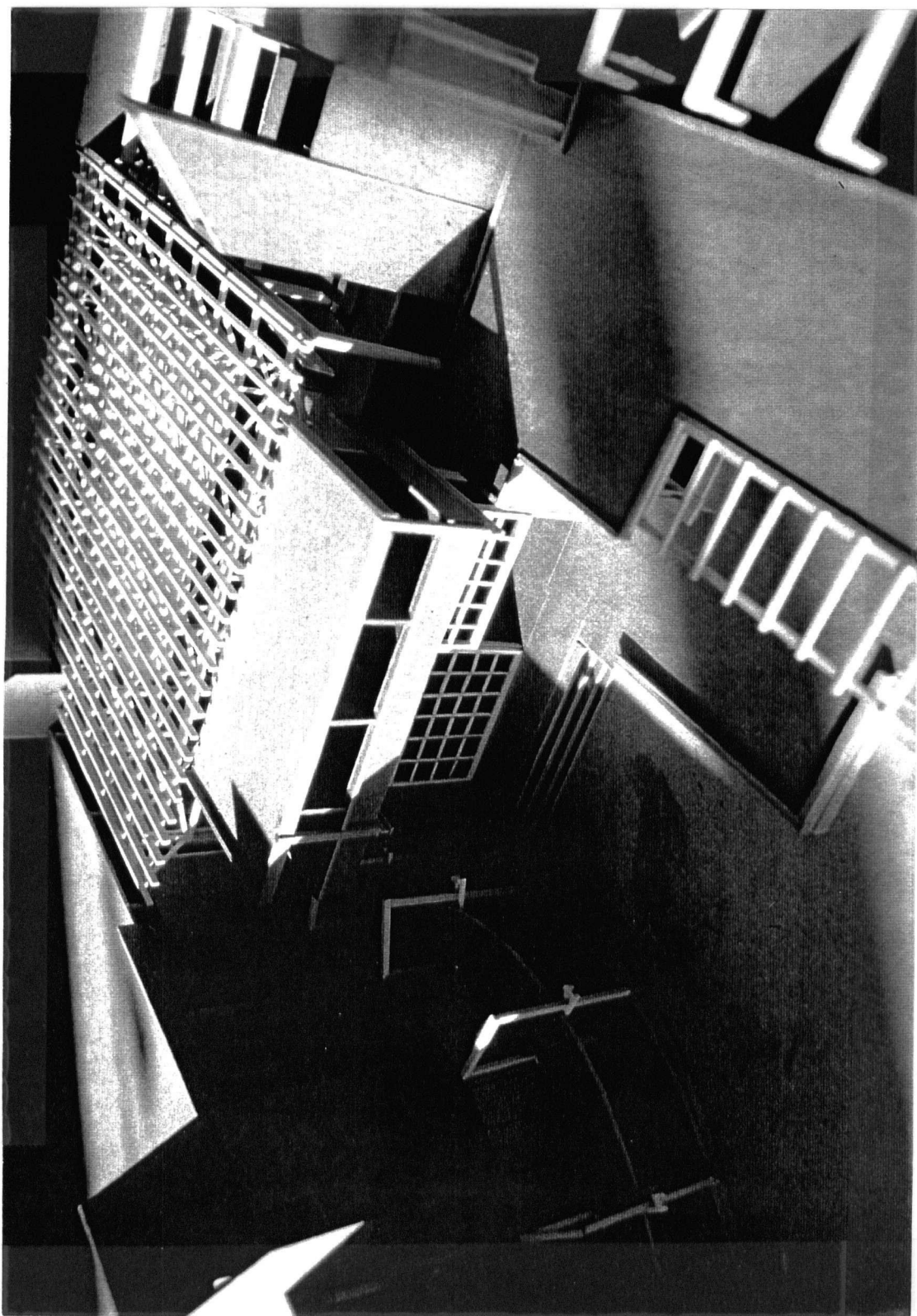


Figure 17: Detail of Physiotherapy Unit