

BIG WHEELS KEEP ON ROLLING
THE CANADIAN MUSEUM OF RAIL TRAVEL

by

PAUL HUNTER THORKELSSON

A THESIS SUBMITTED IN PARTIAL FULFILLMENT OF
THE REQUIREMENTS FOR THE DEGREE OF
MASTER OF ARCHITECTURE

in

THE FACULTY OF GRADUATE STUDIES

School of Architecture

We accept this thesis as conforming to the required standard

THE UNIVERSITY OF BRITISH COLUMBIA

April 1996

© PAUL HUNTER THORKELSSON, 1996

In presenting this thesis in partial fulfilment of the requirements for an advanced degree at the University of British Columbia, I agree that the Library shall make it freely available for reference and study. I further agree that permission for extensive copying of this thesis for scholarly purposes may be granted by the head of my department or by his or her representatives. It is understood that copying or publication of this thesis for financial gain shall not be allowed without my written permission.

SCHOOL OF
Department of ARCHITECTURE

The University of British Columbia
Vancouver, Canada

Date MARCH 15/96

ABSTRACT

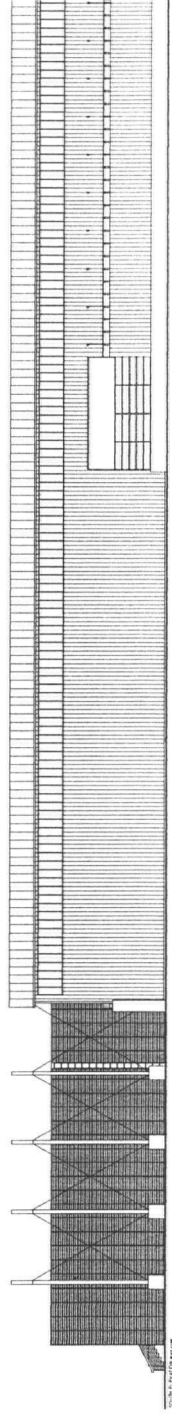
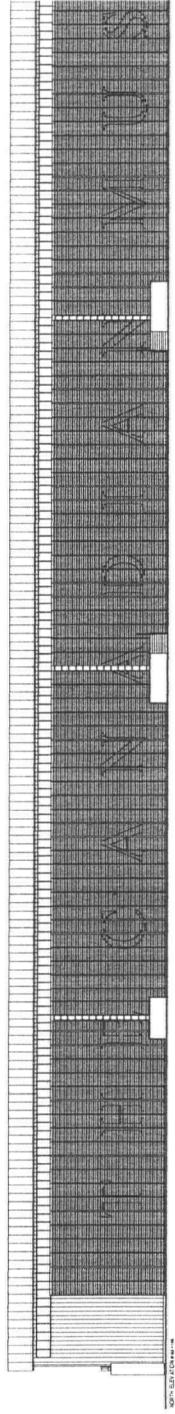
The project under investigation here is a museum facility to house the full collection of historic Canadian trains currently on display at the existing Canadian Museum of Rail Travel located in Cranbrook, British Columbia.

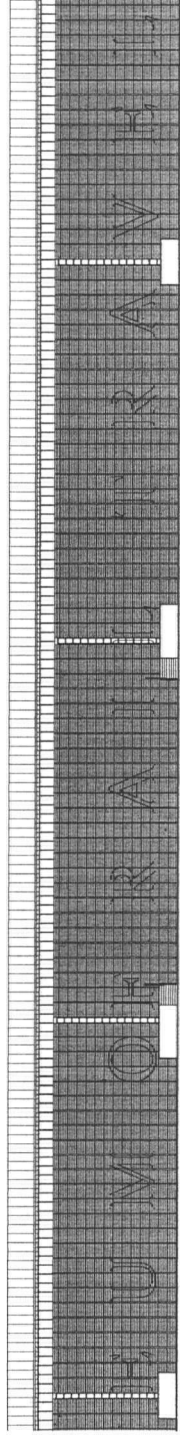
The site of the proposed museum is on a narrow strip of vacant land bordered along one edge by an operating railway yard and on the other by Highway 3/21 the major transportation route through Southern British Columbia. The intention of this siting is to allow the proposed museum to act as a backdrop to the city providing both a buffer between it and the industrial developments beyond the rail yards, as well as a reconnection of the City to the railway on which its history and development has been so dependant.

The building itself is organized as two buildings (or layers) lying along side each other like rail cars on a series of tracks. The first building (entry building) houses the public activities of the museum including entry and information, gift shop, tea room/cafe, temporary gallery, administration offices, archives, shipping/receiving and entrance to the orientation theatre. The second building (the train shed) houses the body of the collection and museum including the restored train sets and cars, elevated discussion space, orientation theatre, and restoration workshops. These two main buildings are connected by a long narrow spine which provides circulation from the entry building through the orientation theatre into the train shed and the collection itself. The spine also houses display areas and visible archives along its length which provide the passing viewer with further explanation of particular aspects of the museum's collection.

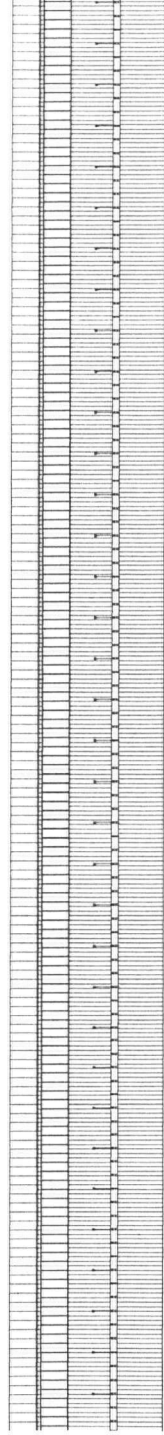
TABLE OF CONTECTS

Abstract		ii
Table of Contents		iii
Building Elevations	North Elevation	
	South Elevation	1
	North Elevation (continued)	
	South Elevation (continued)	2
	North Elevation (continued)	
	South Elevation (continued)	3
	West Elevation	
	East Elevation	4
Building Plans	Ground Level Plan	5
	Ground Level Plan (continued)	6
	Ground Level Plan (continued)	7
	Upper Level Plan	8
	Upper Level Plan (continued)	9
	Upper Level Plan (continued)	10
Building Sections	Section A-A	11
	Section B-B	12
	Section C-C	13
	Section D-D	14
	Section E-E	15
	Section F-F	16
	Section G-G	17
Model Images	Model - Building Elevation	18
	Model - Building Elevation	19
	Sectional Model - General View	20
	Sectional Model - Side View	21
	Sectional Model - Side View	22
	Sectional Model - Interior Detail	23
	Sectional Model - Building Entry	24
	Sectional Model - Entry Detail	25

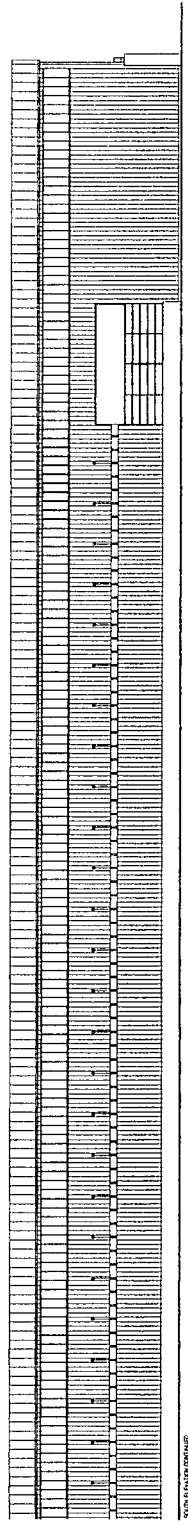
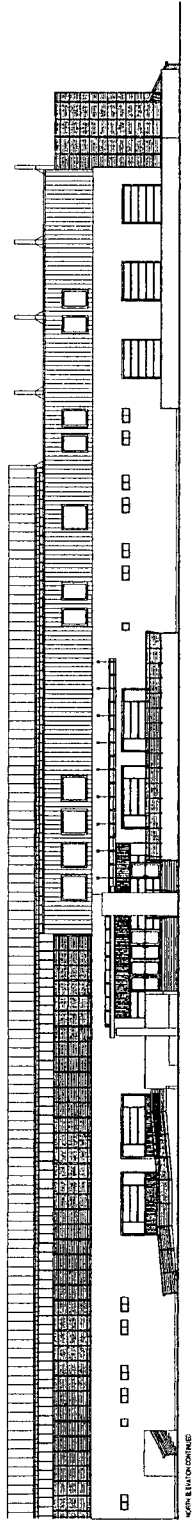


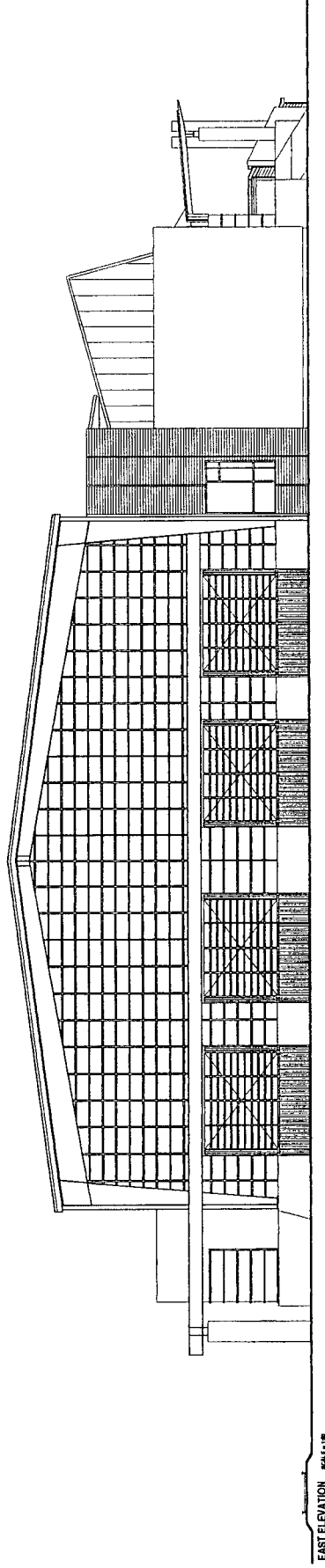
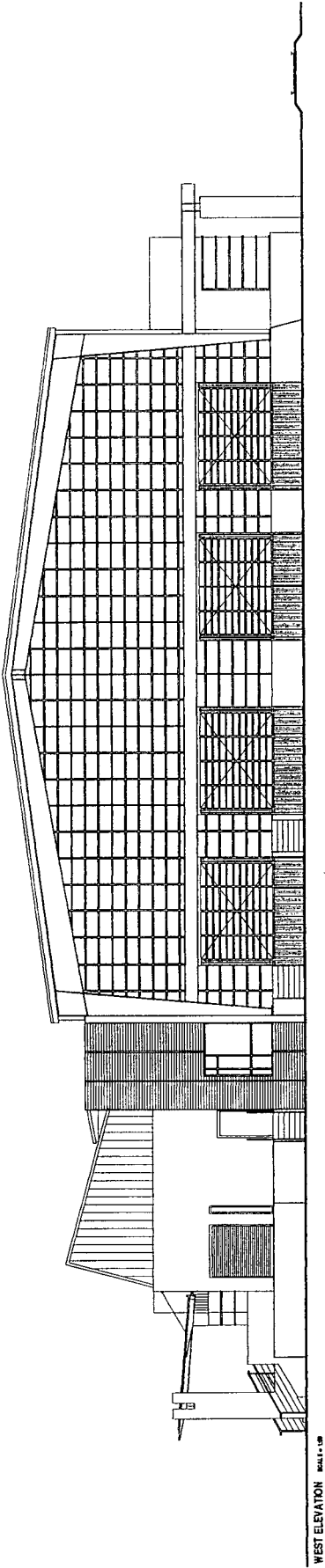


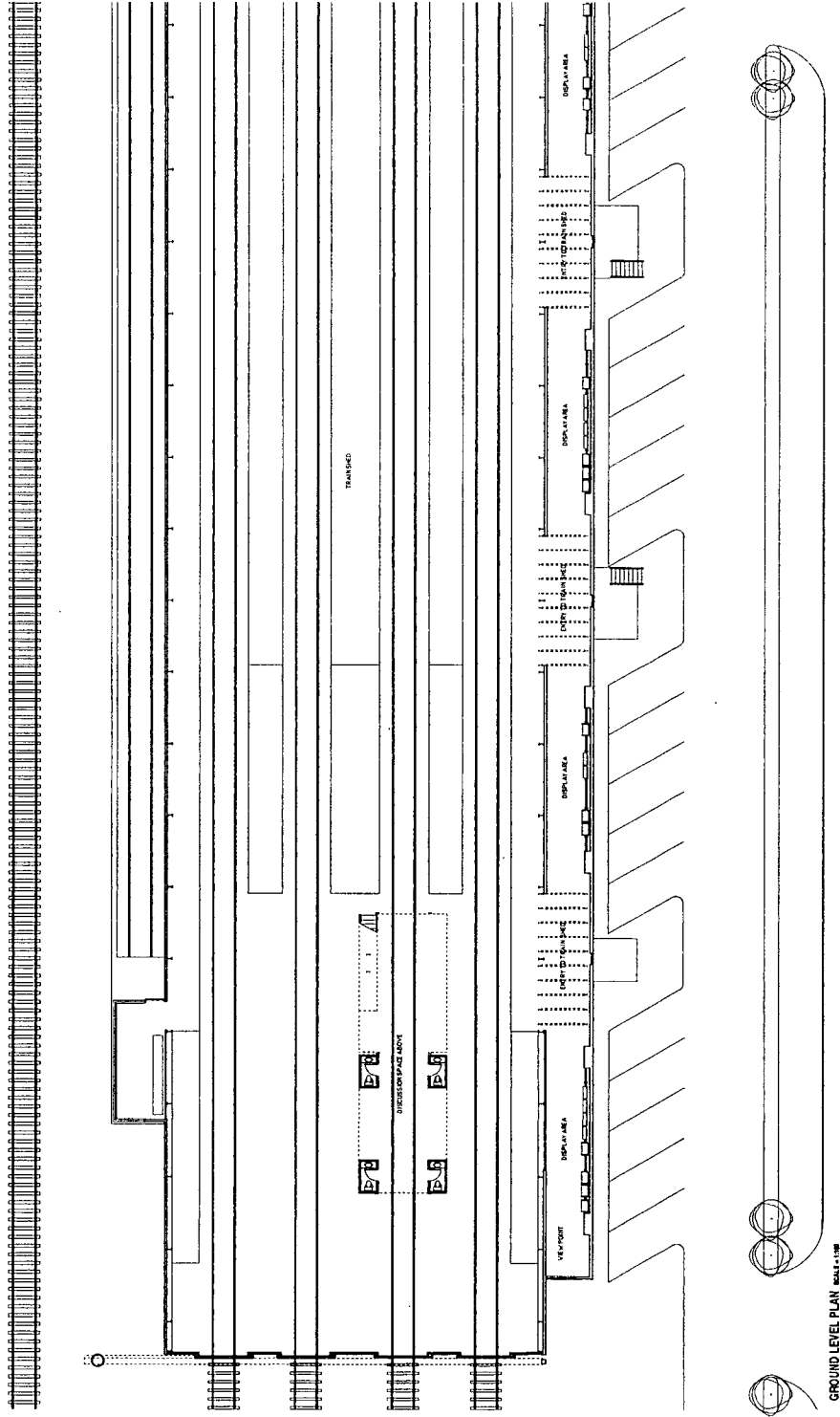
NOTA: ELEVATION CONTINUED



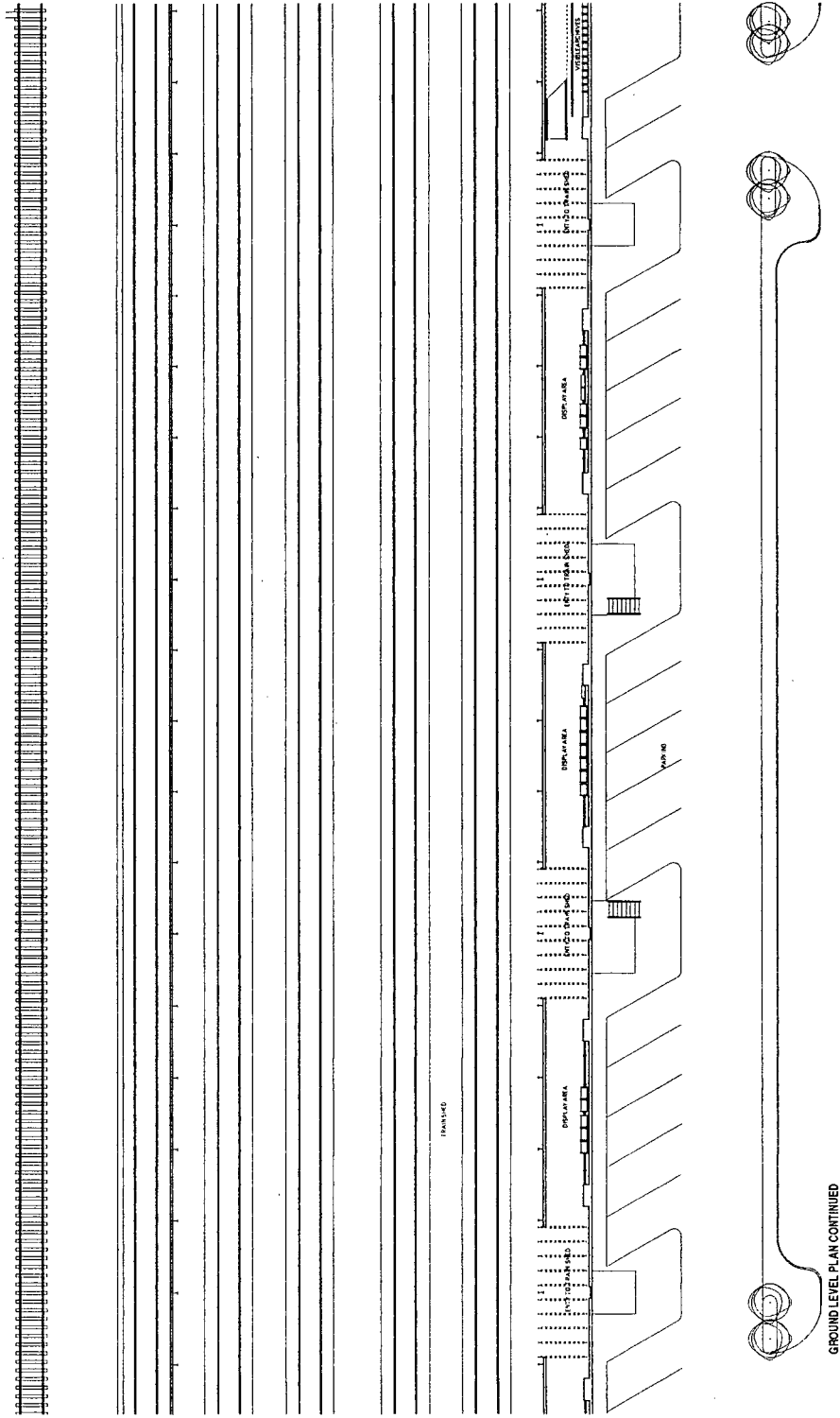
NOTA: ELEVATION CONTINUED

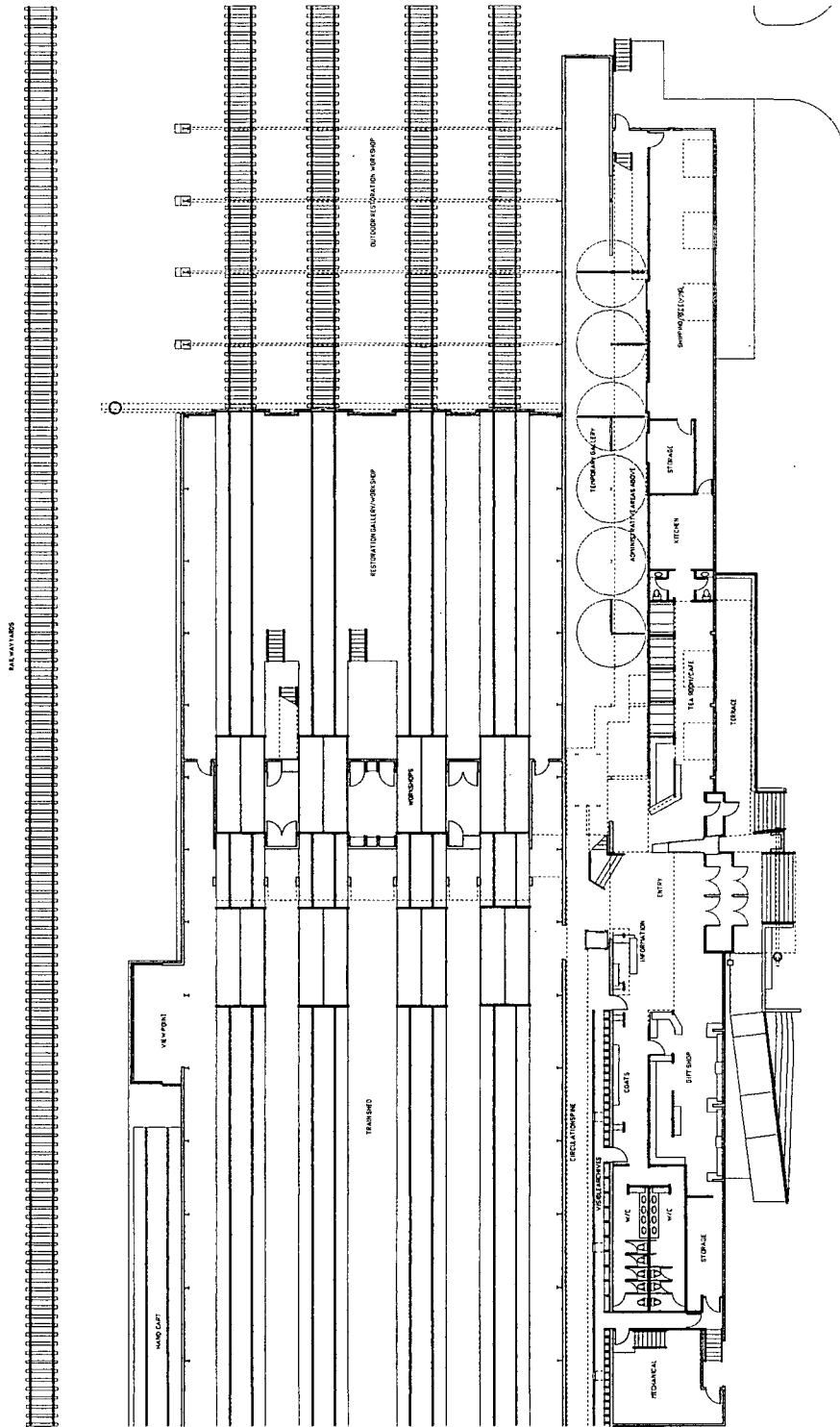




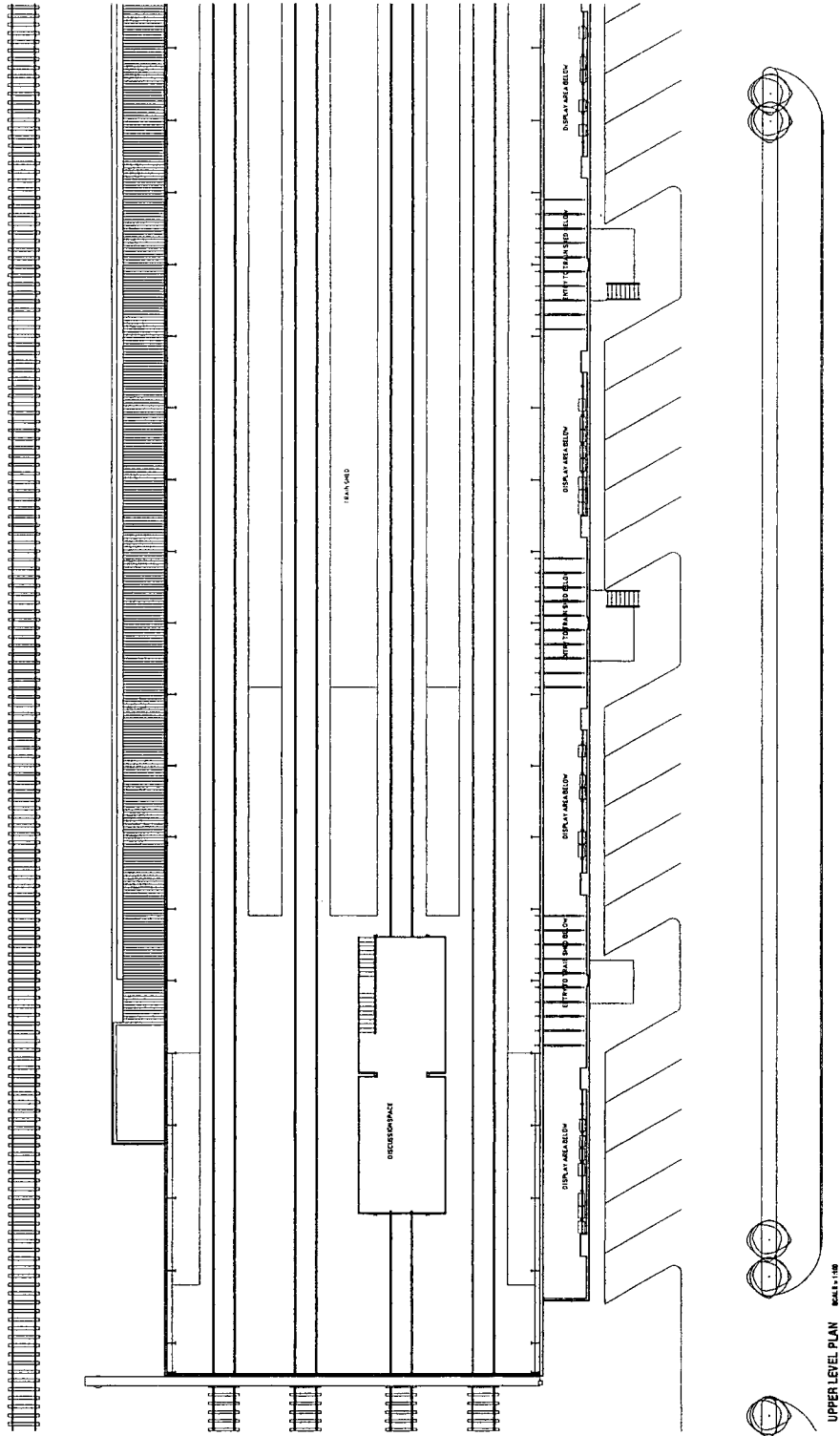


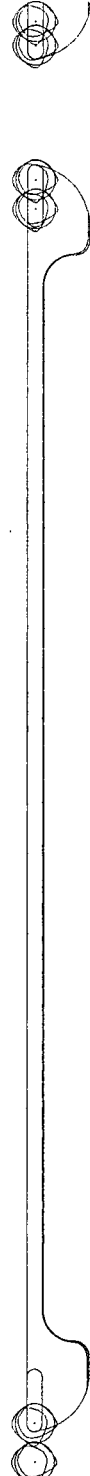
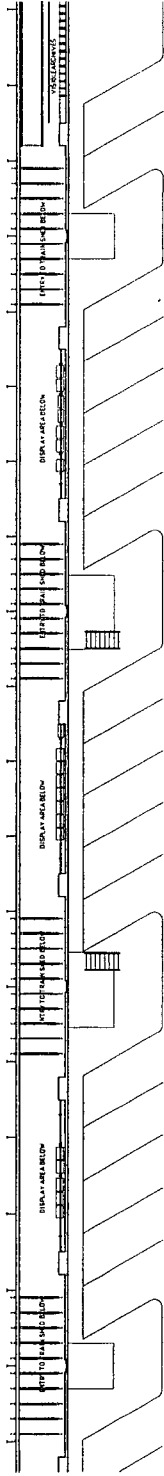
GROUND LEVEL PLAN SCALE: 1:100



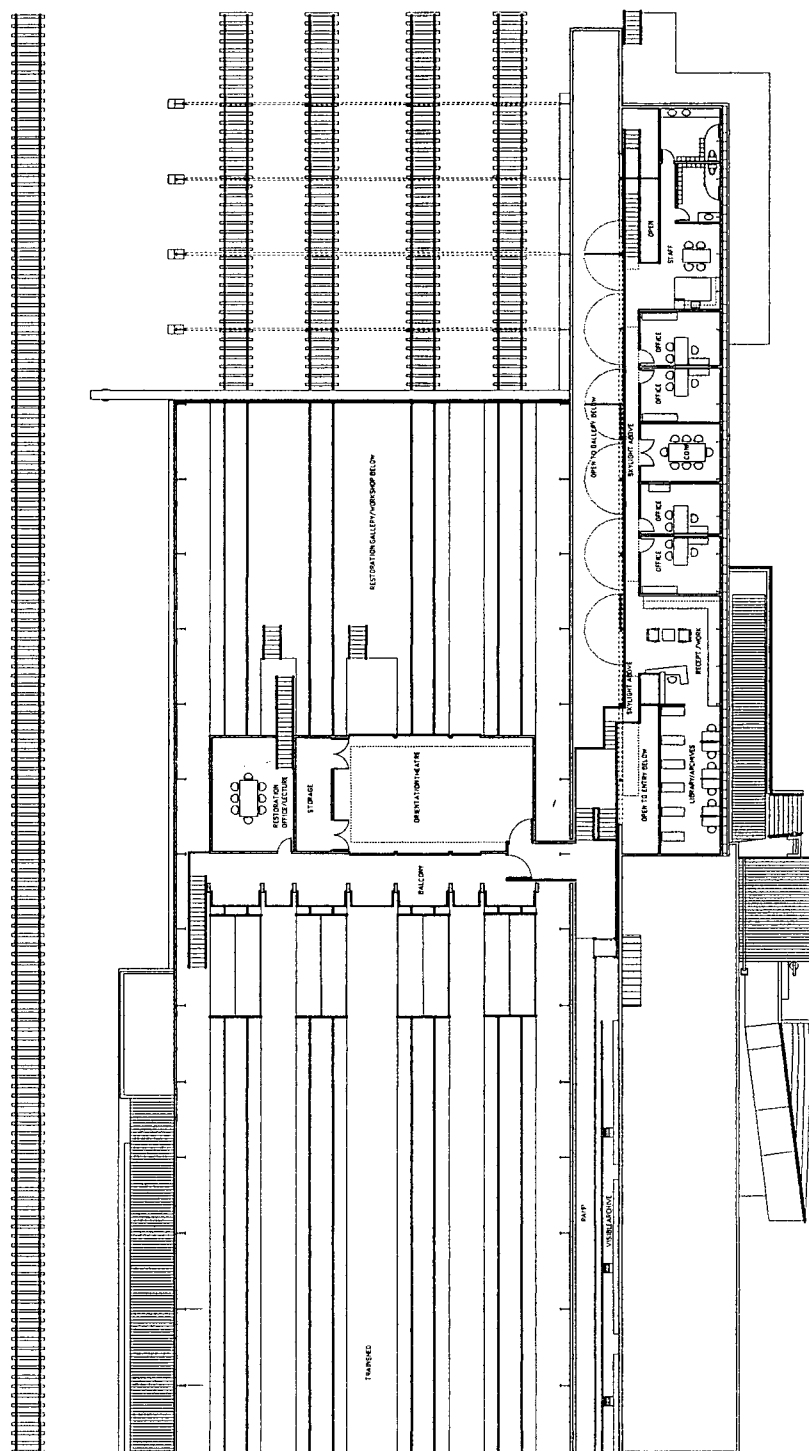


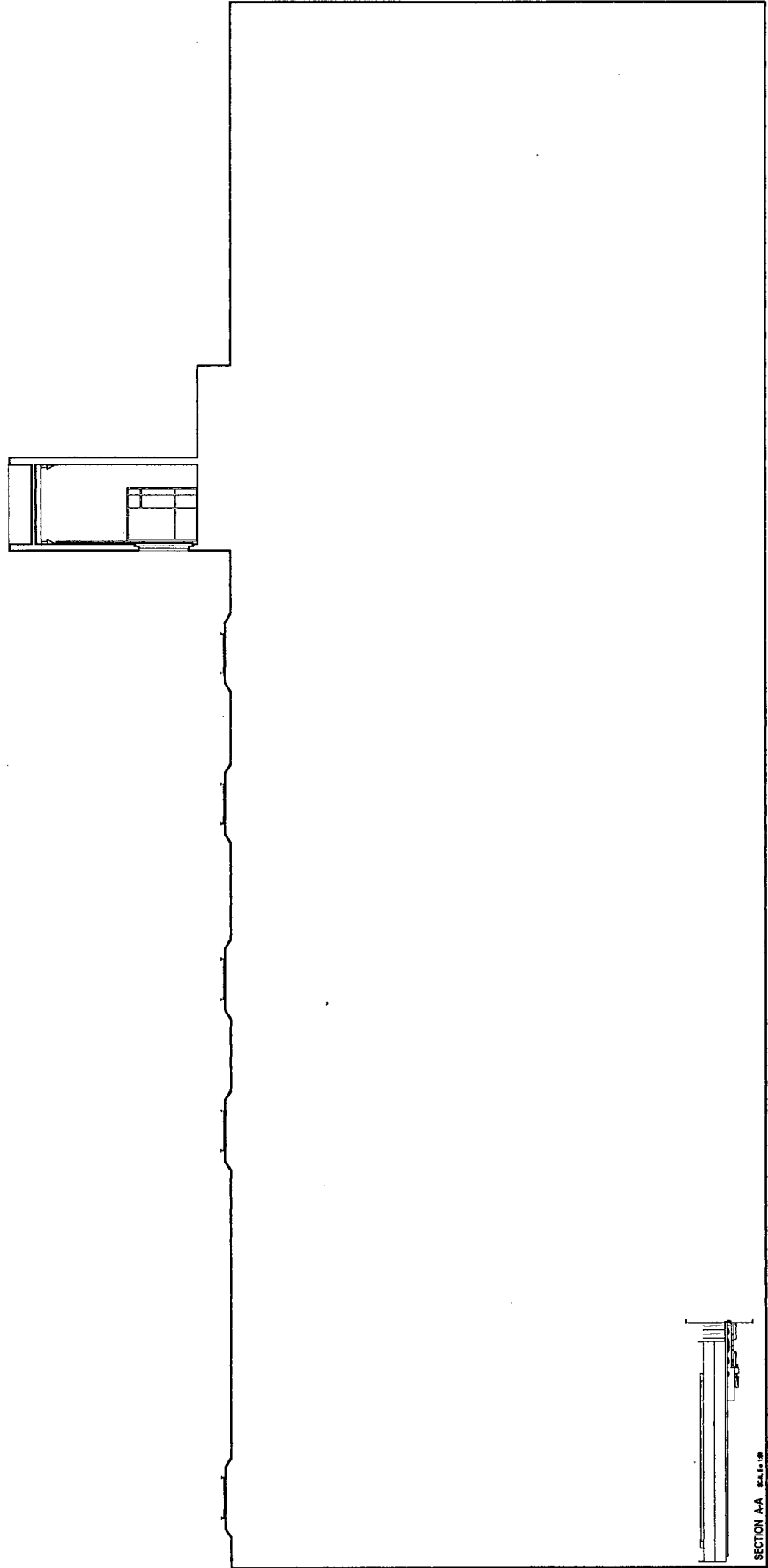
GROUND LEVEL PLAN CONTINUED

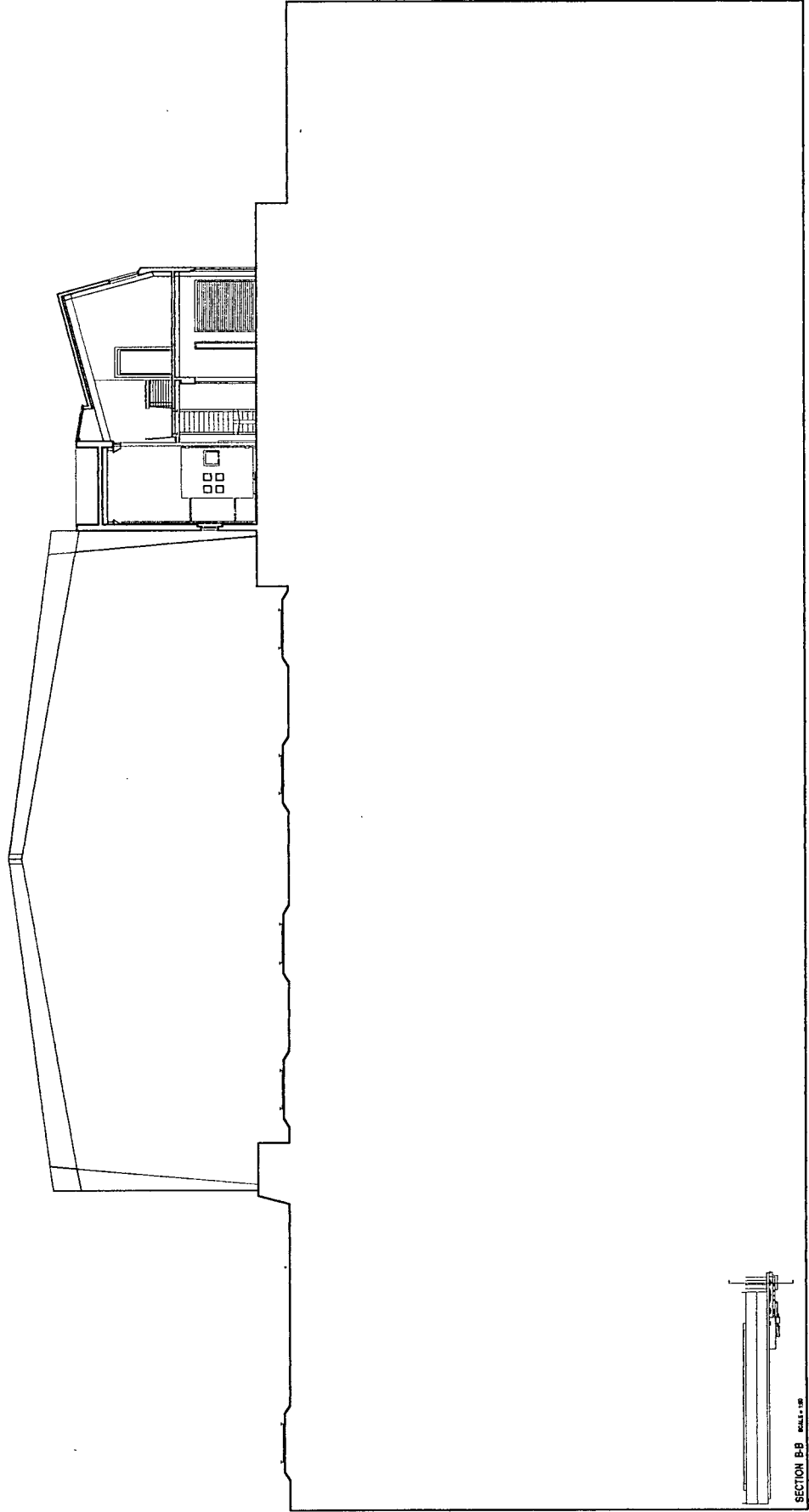


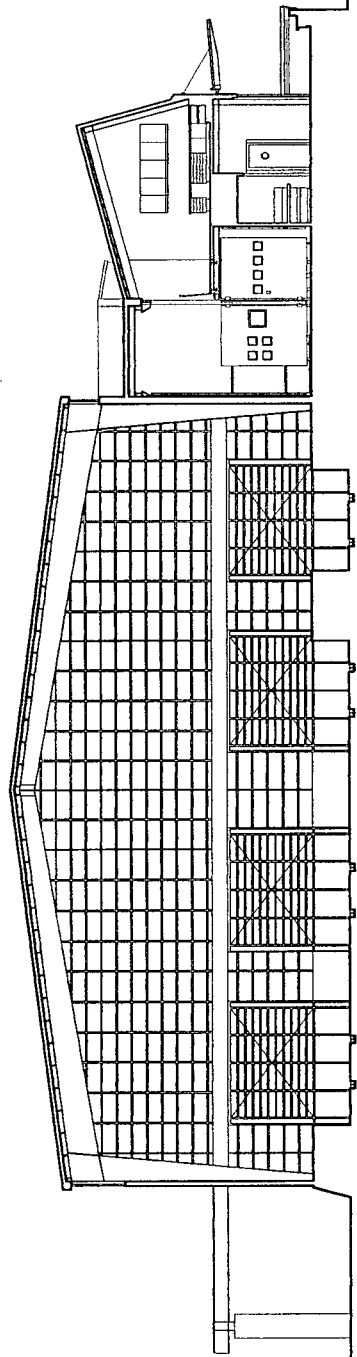


UPPER LEVEL PLAN CONTINUED

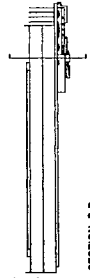
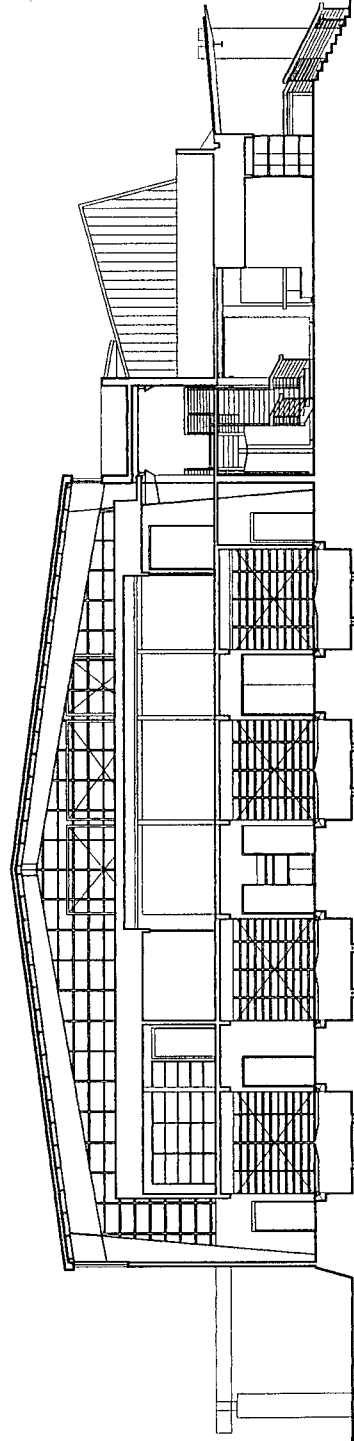


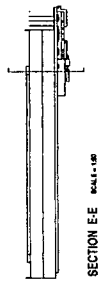
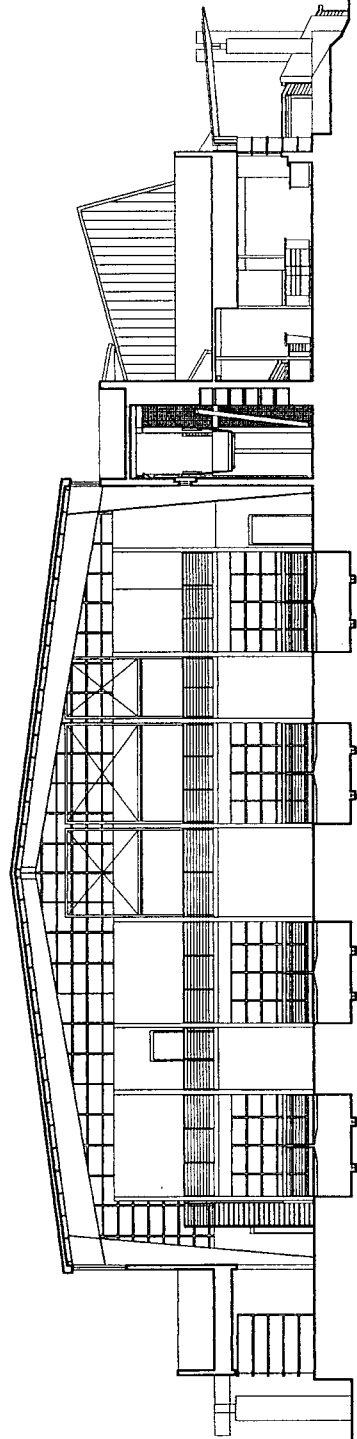




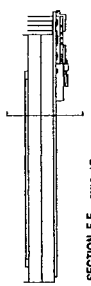
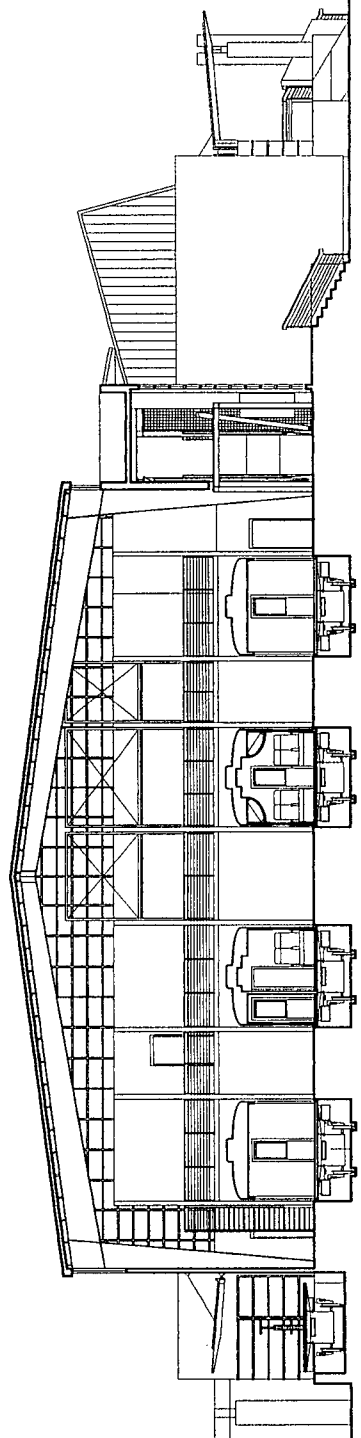


SECTION CC 1/4" = 1'-0"

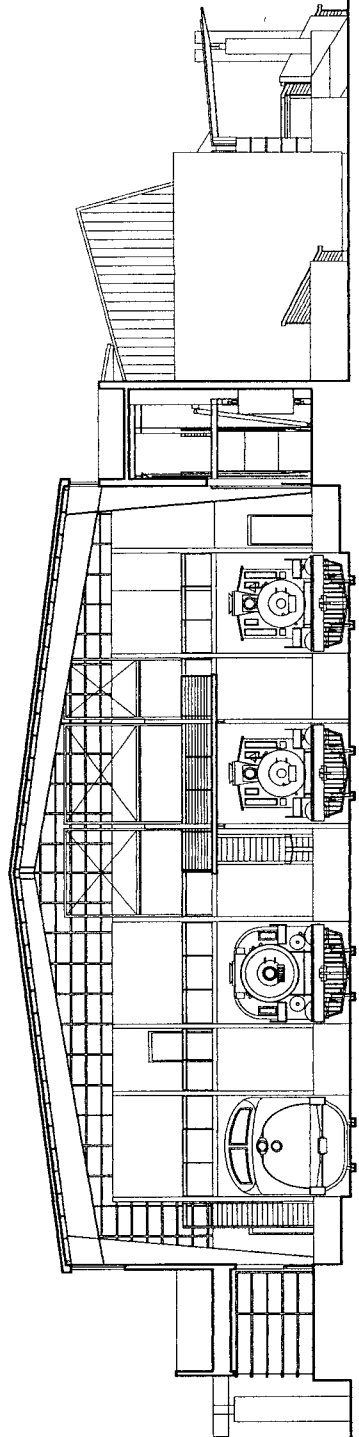




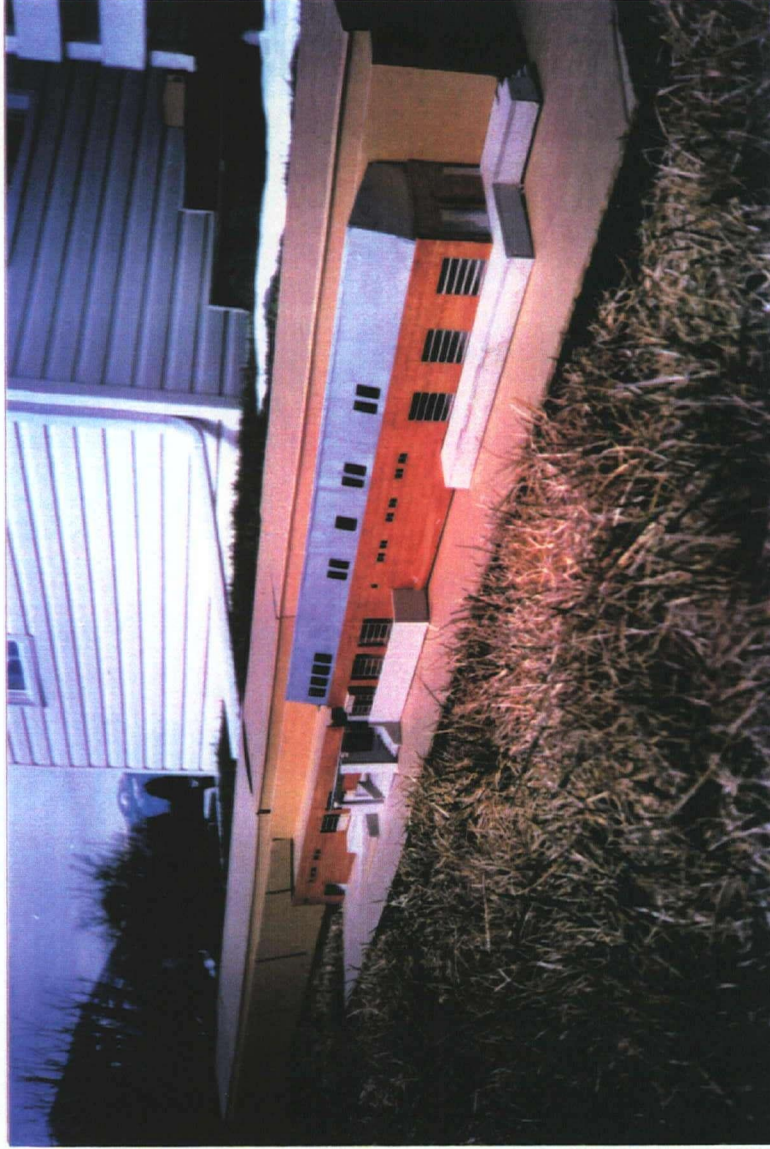
SECTION EE 1/4" = 1'-0"



SECTION FF



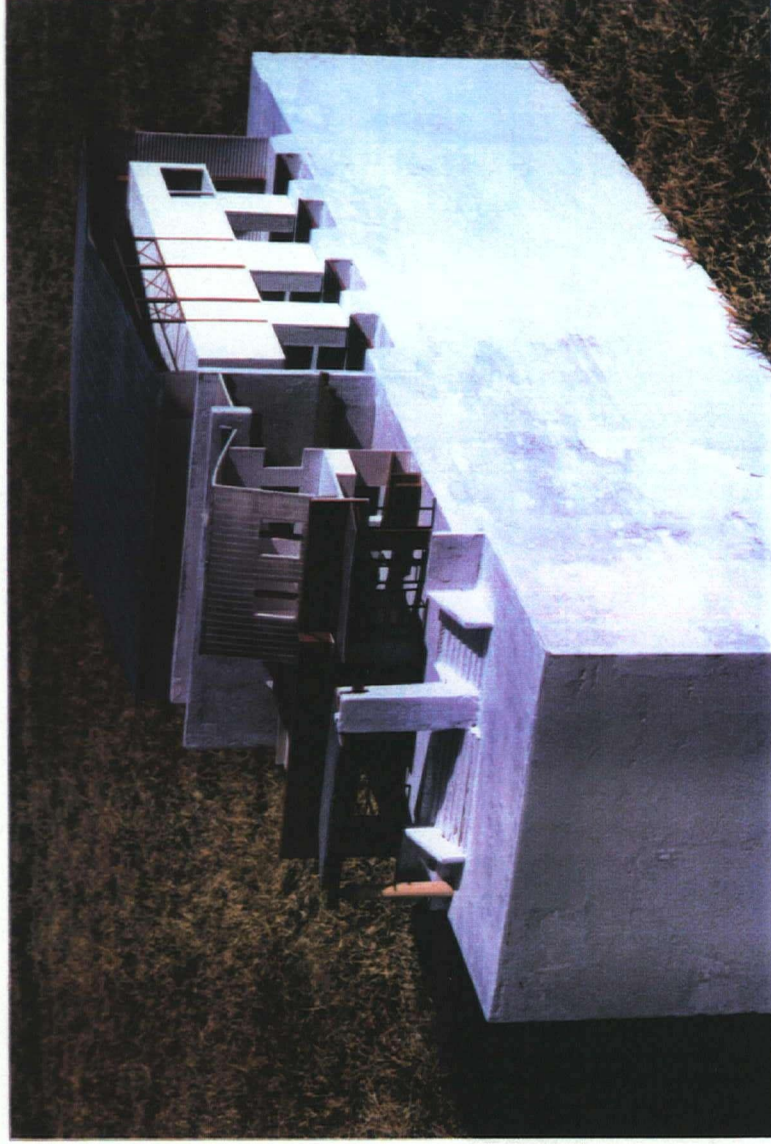
SECTION G-G SCALE 1/8"



MODEL - BUILDING ELEVATION



MODEL - BUILDING ELEVATION



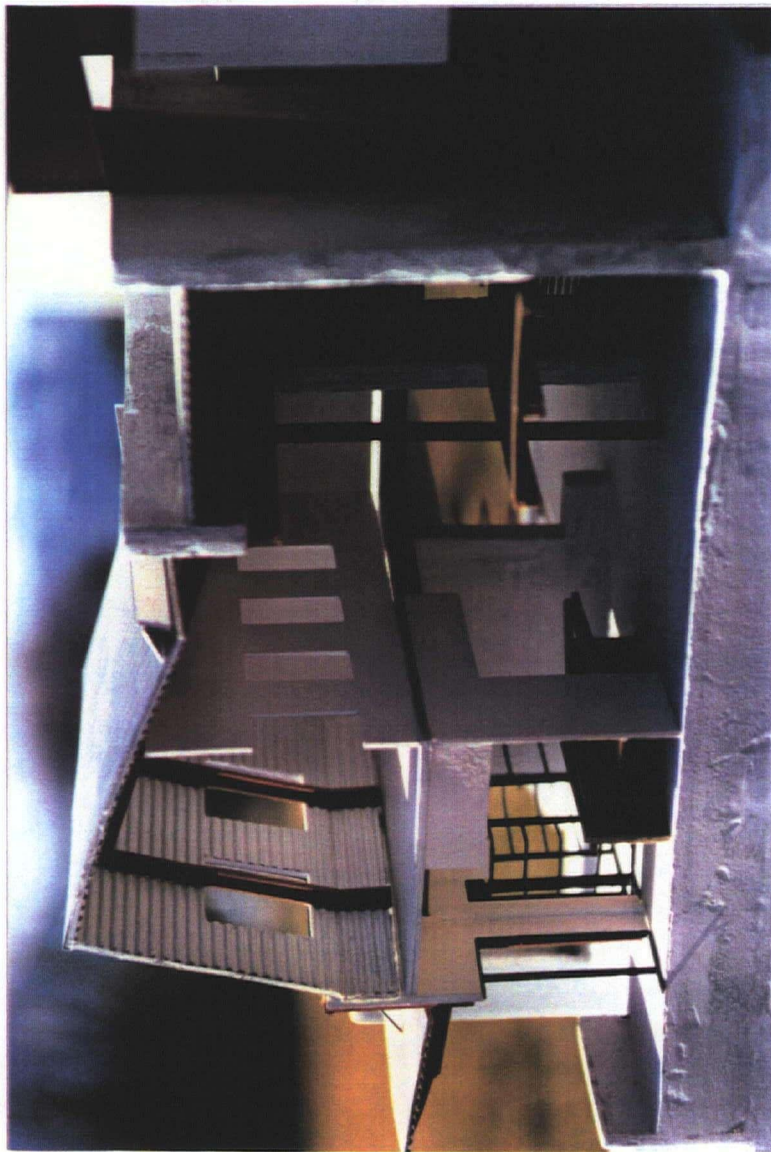
SECTIONAL MODEL - GENERAL VIEW



SECTIONAL MODEL - SIDE VIEW



SECTIONAL MODEL - SIDE VIEW



SECTIONAL MODEL - INTERIOR DETAIL



SECTIONAL MODEL - BUILDING ENTRY



SECTIONAL MODEL - ENTRY DETAIL