

open access tools for geoscience education

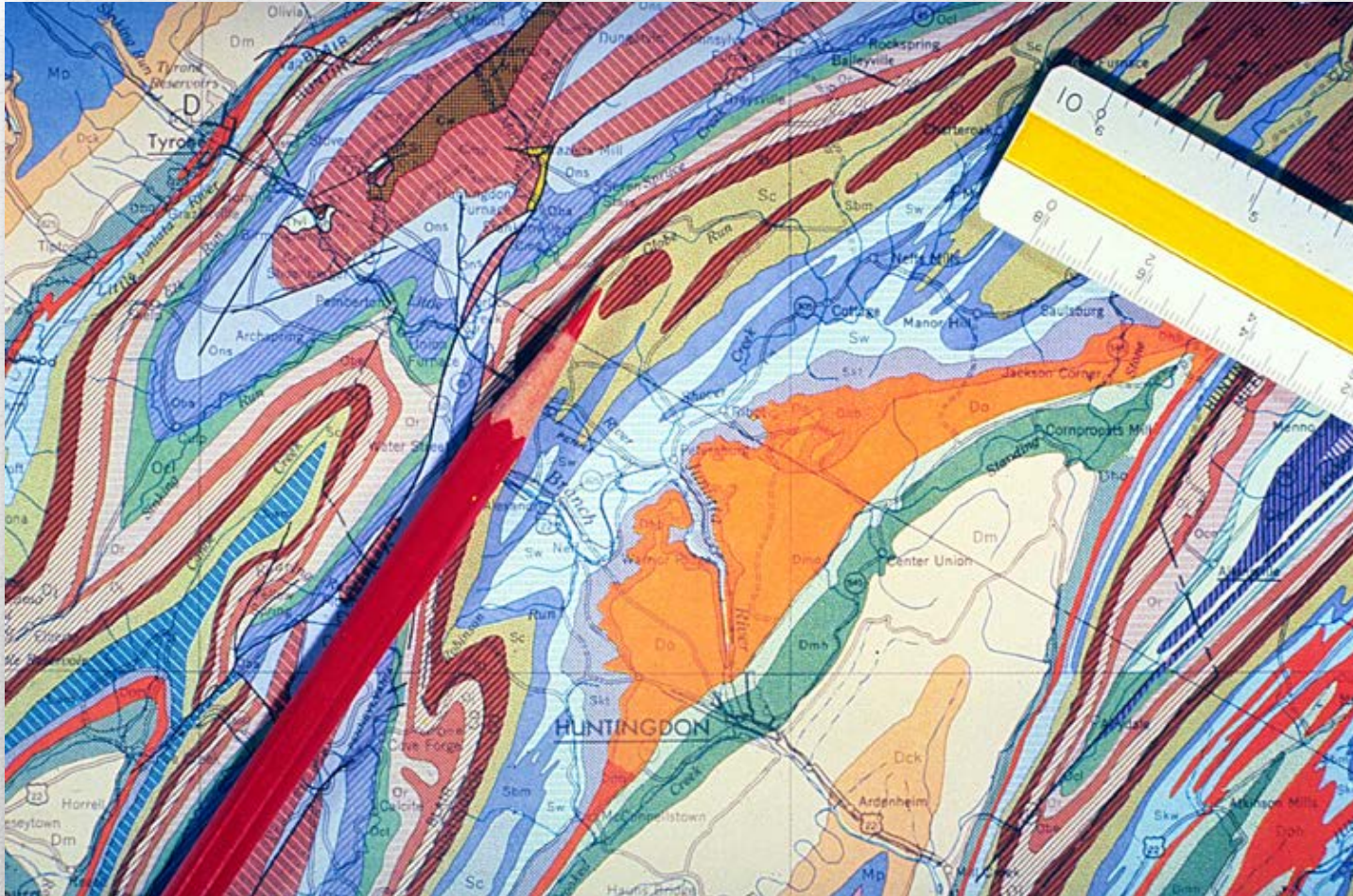
rowan cockett





geoscience





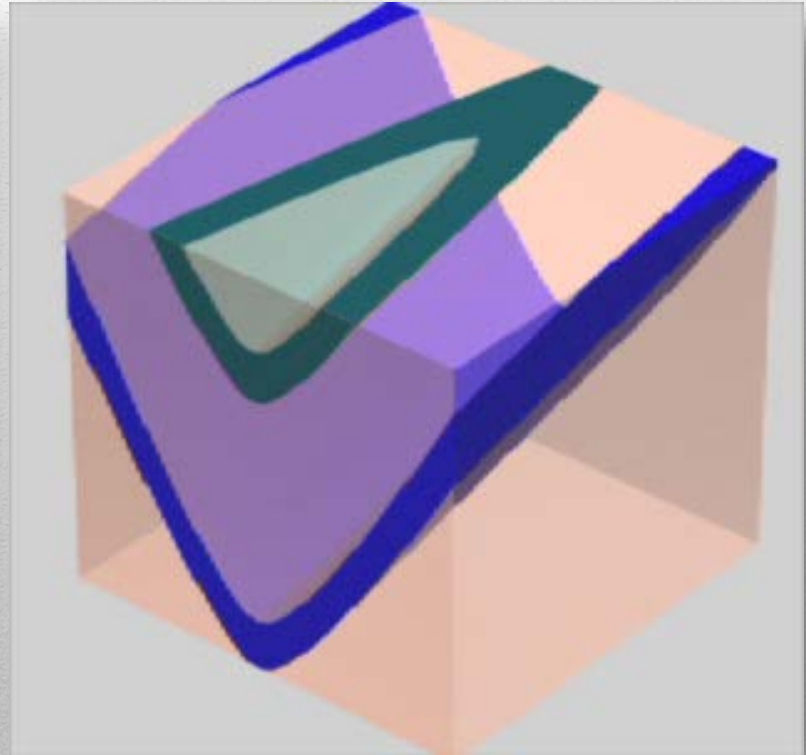
teaching geology



(John Lewis)

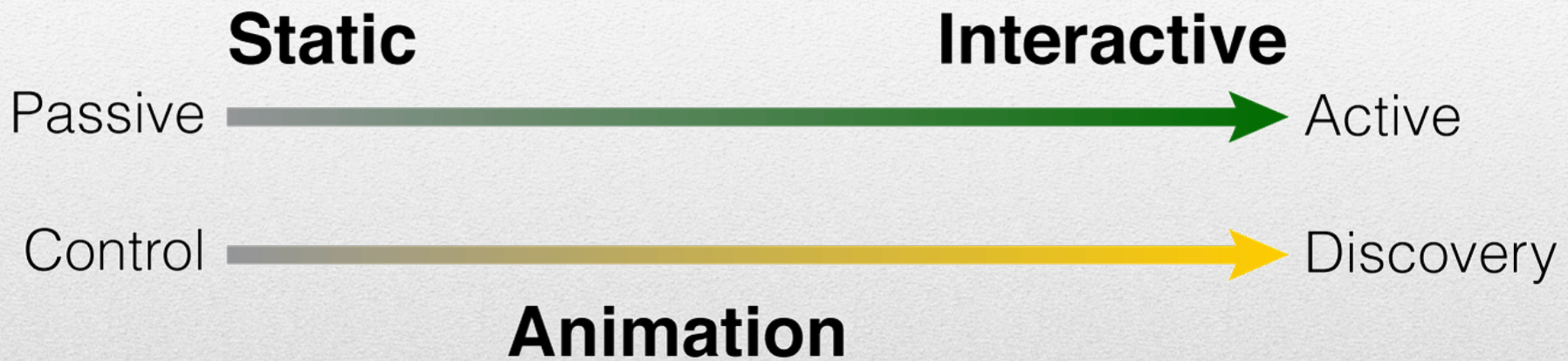


(Reynolds, 2001)



motivation

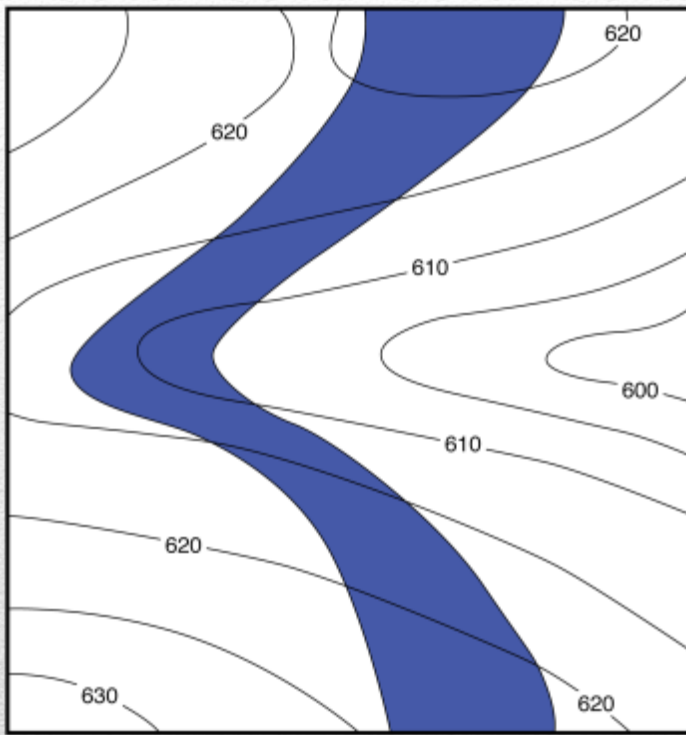




visualizations

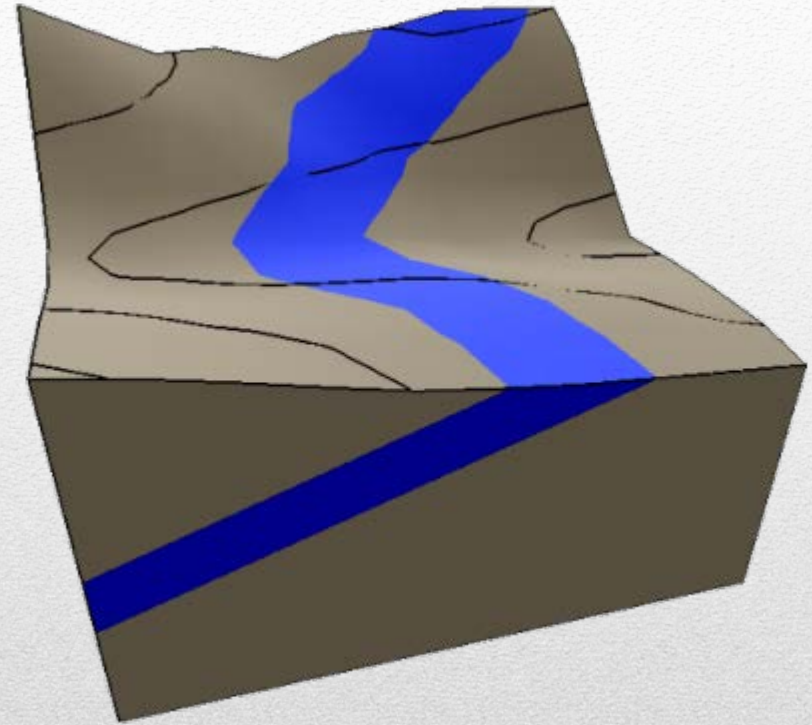
(Libarkin & Brick, 2002)





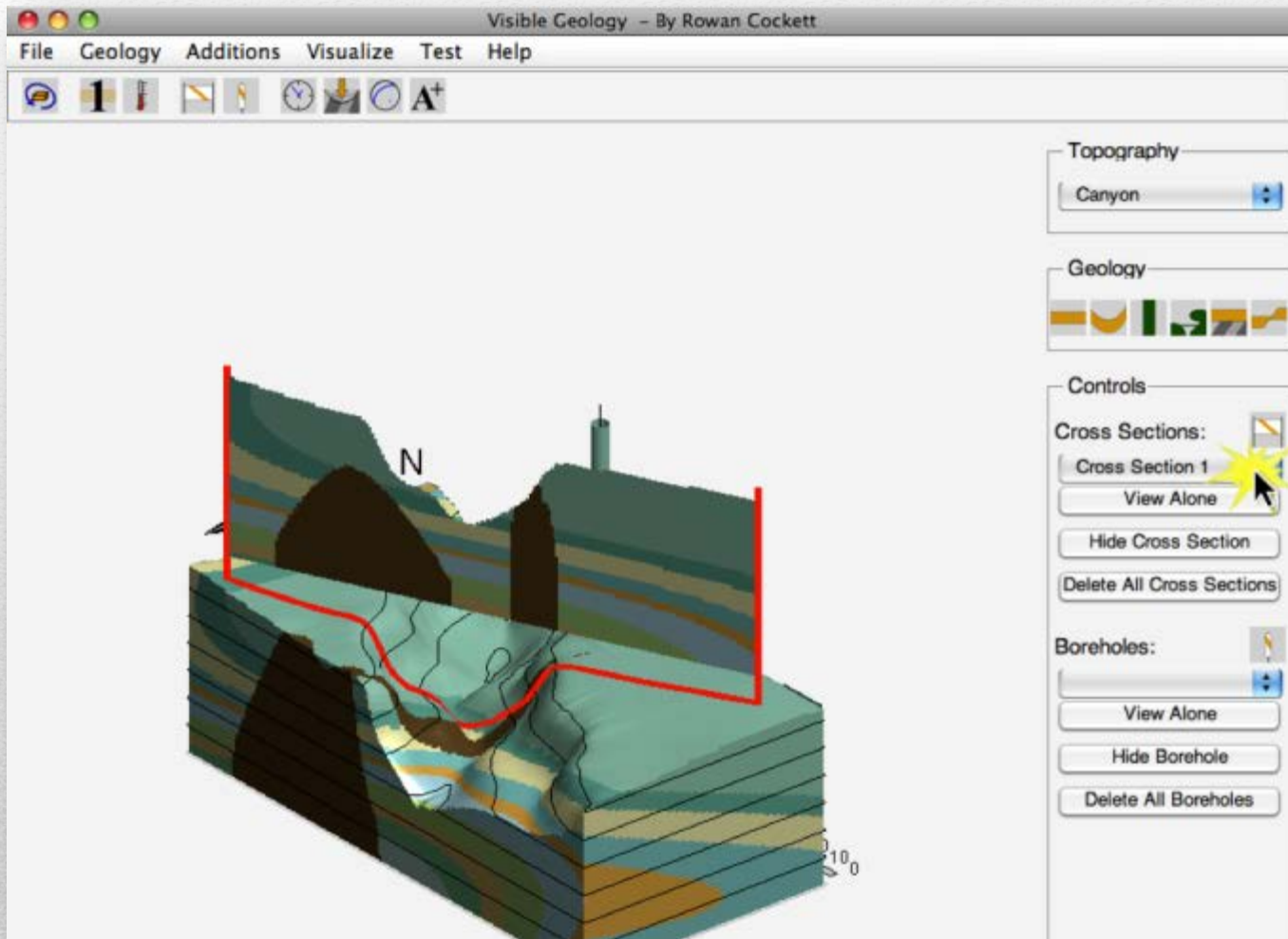
Contour Interval: 5m

10m



my story





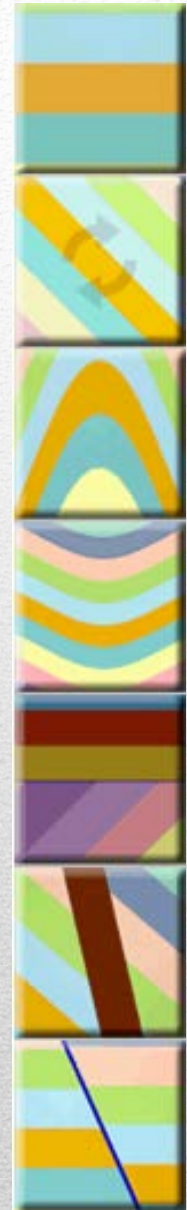
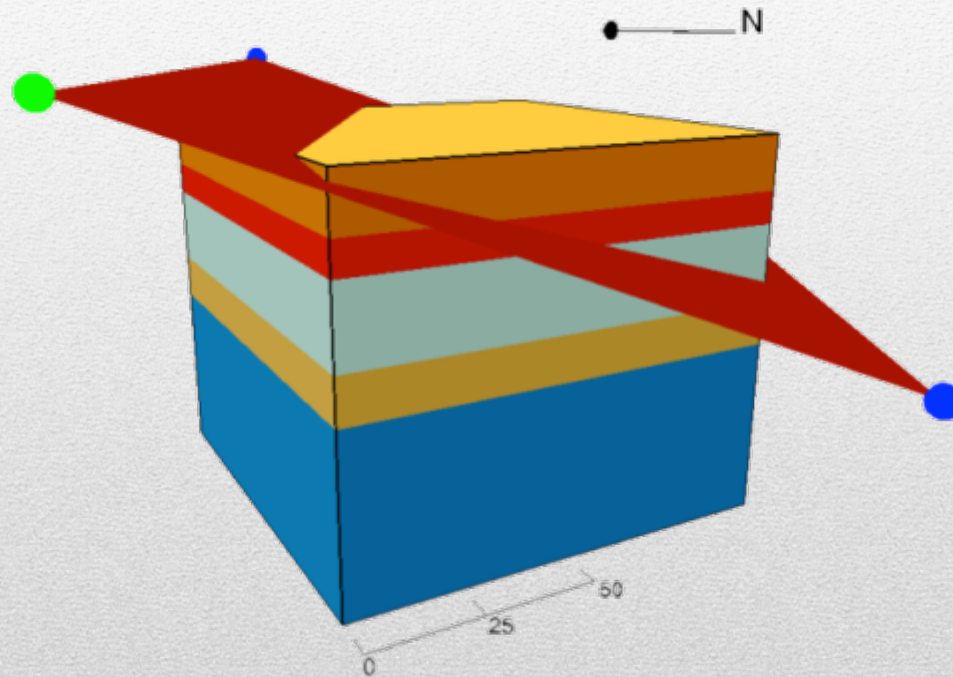
what I built (first)





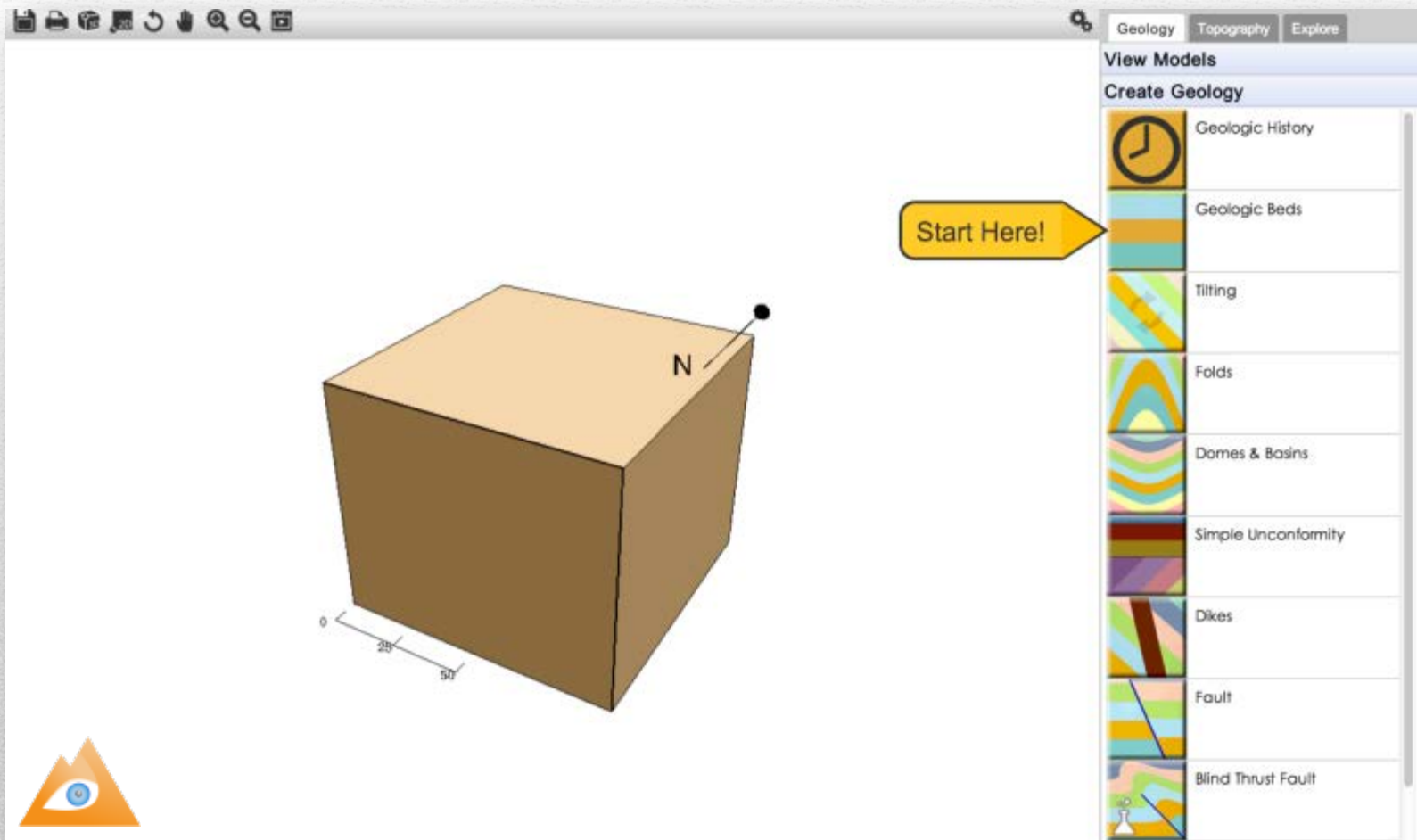
a solution



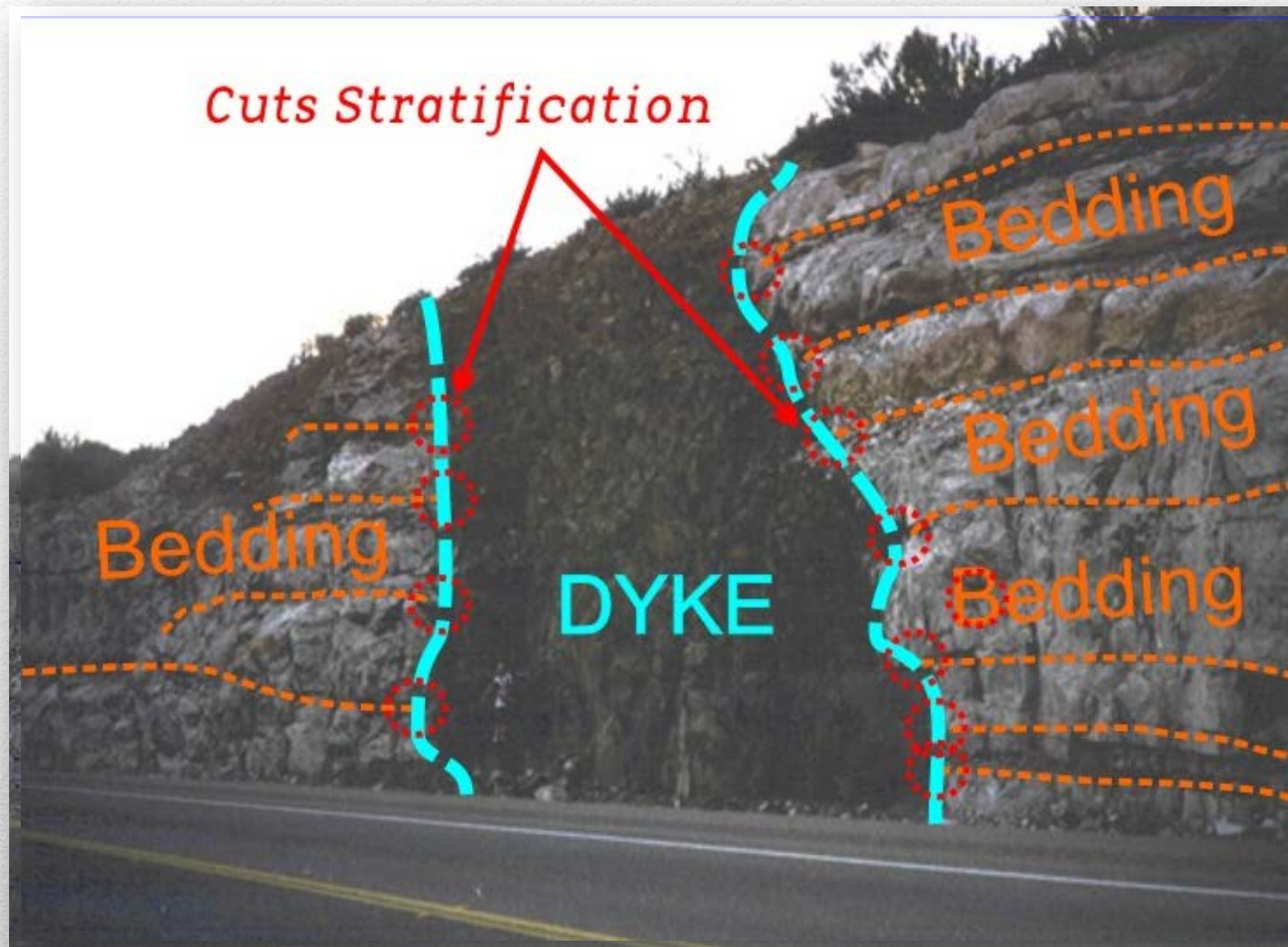


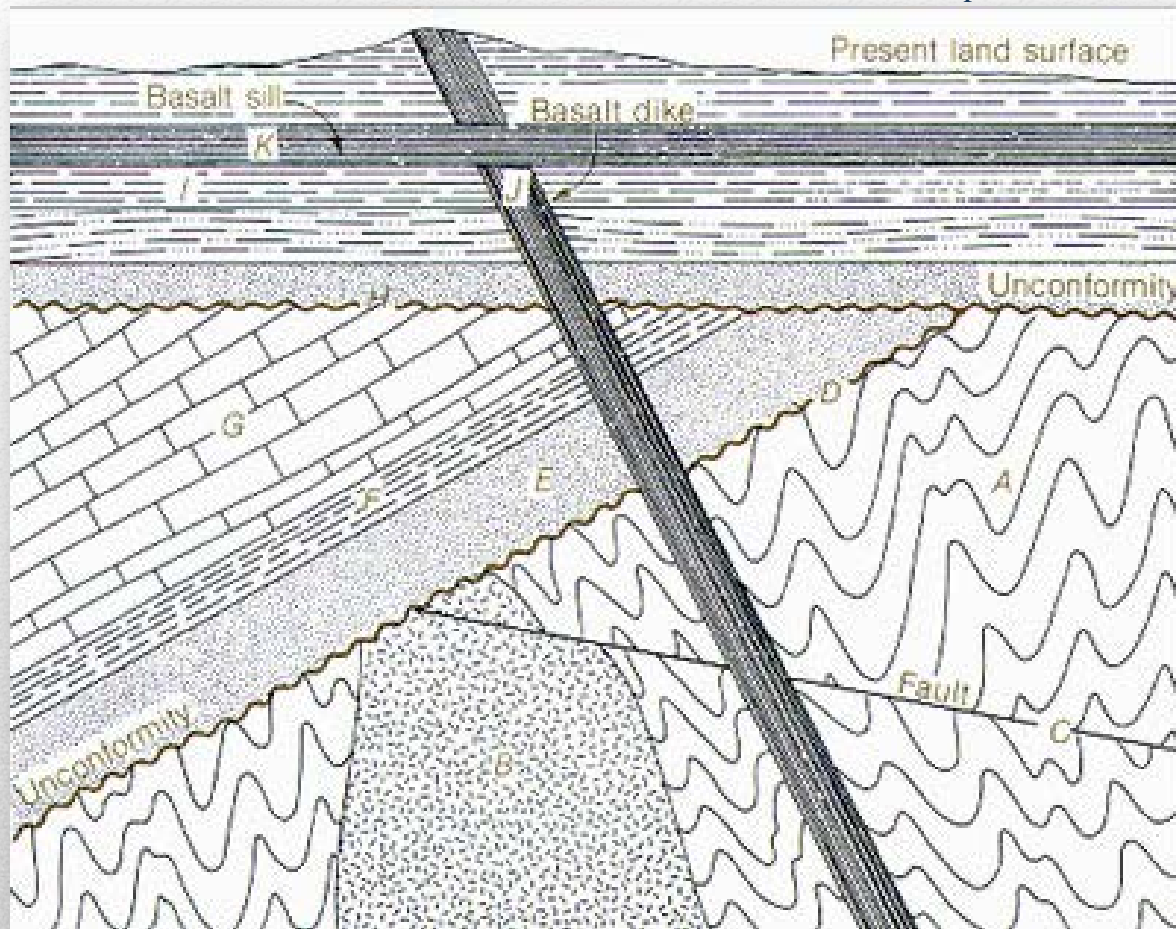
moving to the web



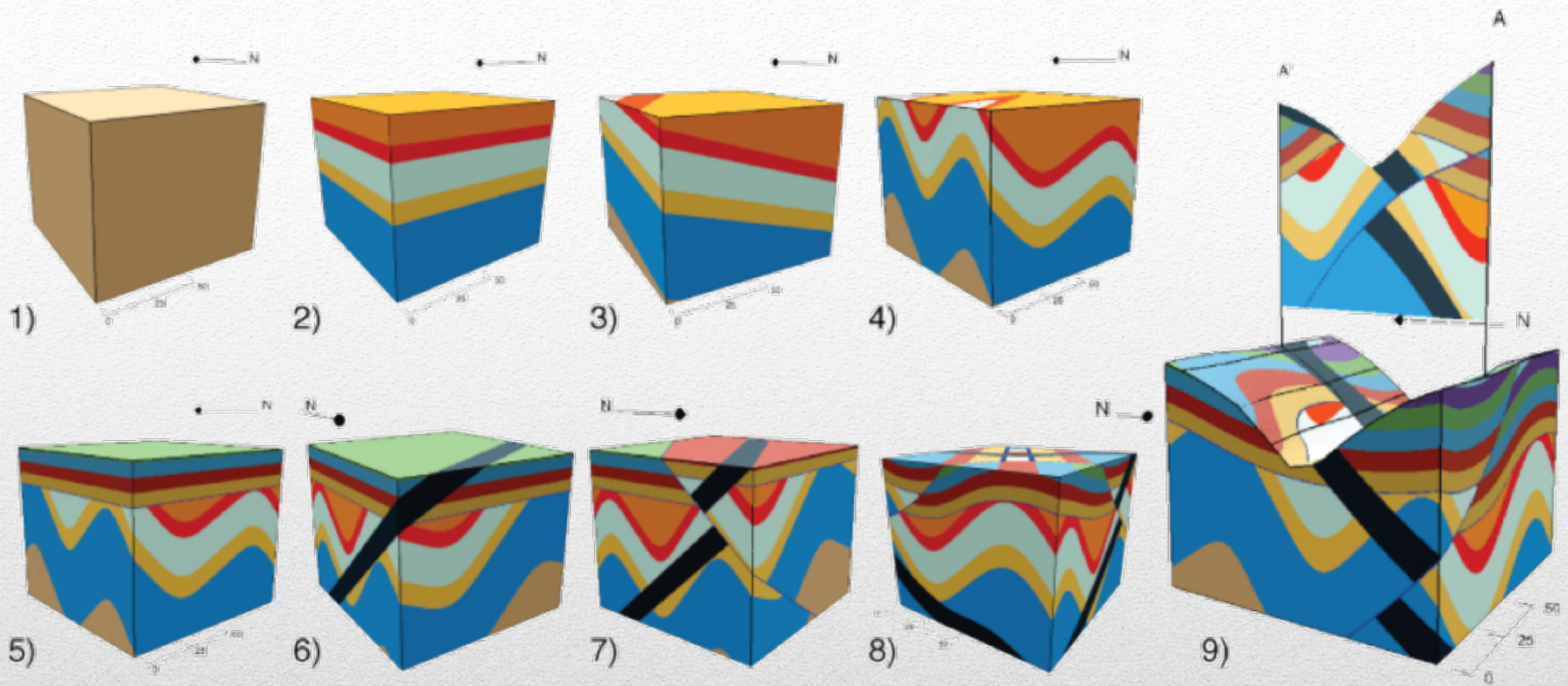


visible geology





order the events!

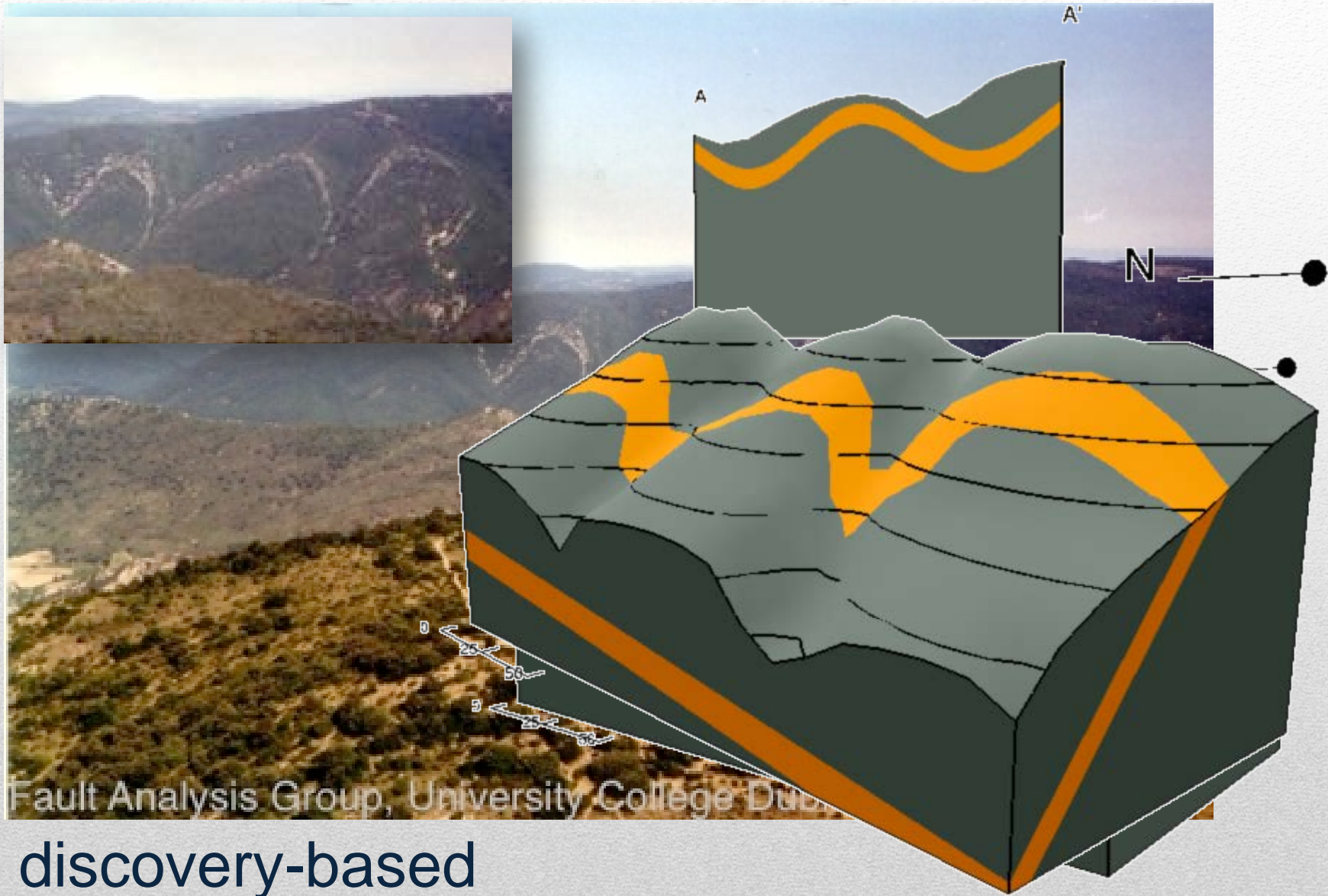


forward



inverse





269
??

Earth Sciences

How did this mountain ridge form? pic inside

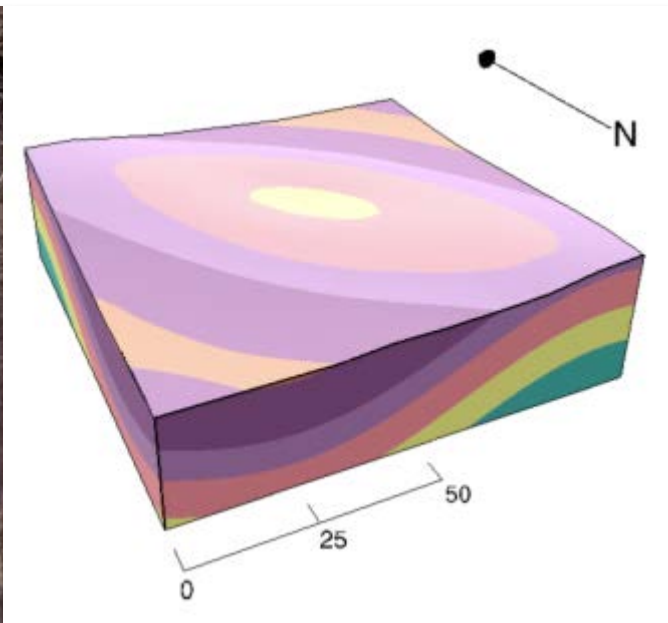
self.askscience

submitted 5 months ago by youregonnalovethis

<http://imgur.com/drZDIXj>

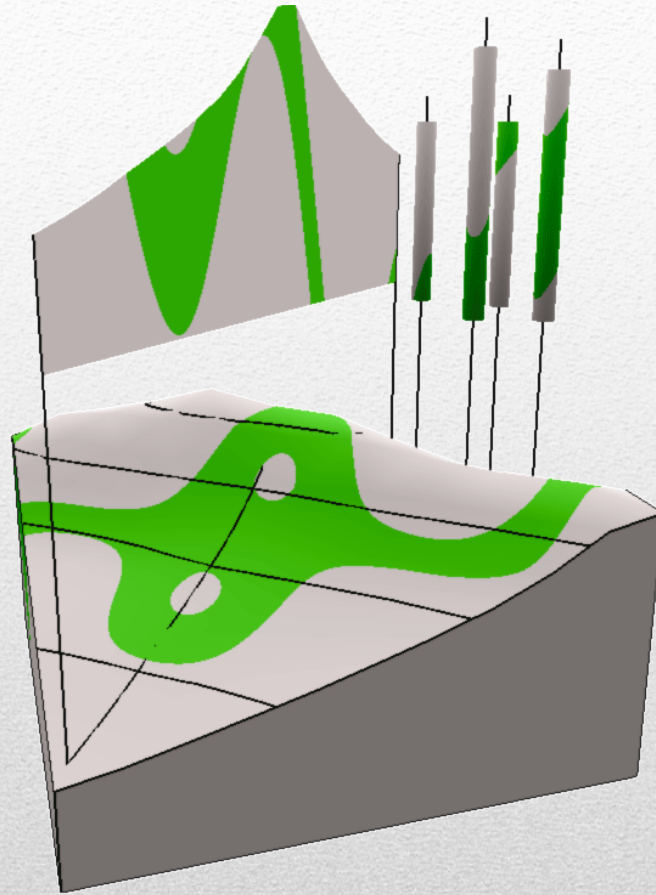
This is a picture of a mountain ridge near San Alberto, Mexico a seen from the ISS. How does a formation like this happen? What causes the range to split? or to appear to split?

48 comments share save hide report



reddit

- easy
- open
- engaging



what I have learned





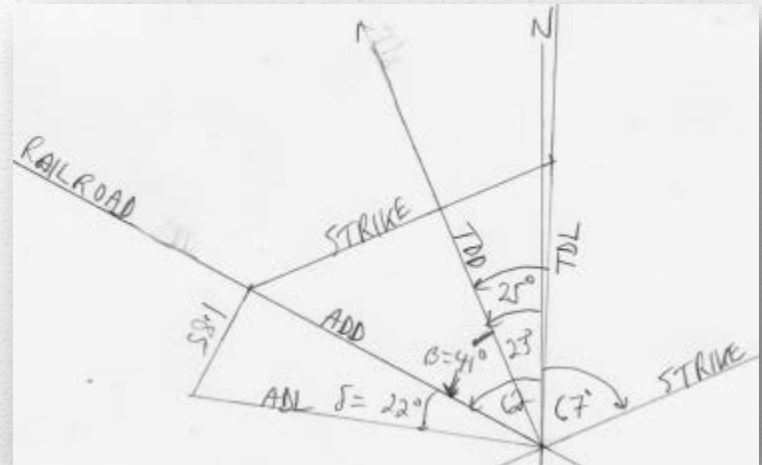
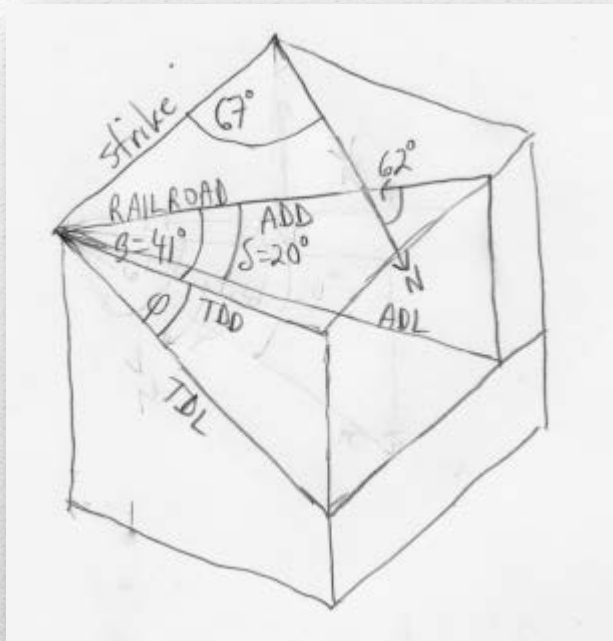
putting it together





online learning is different





my story



- a sandbox
 - cultivating intuitions
 - process & discovery based learning
- there is value in toys
- *simple tools for engagement are key*

engage

