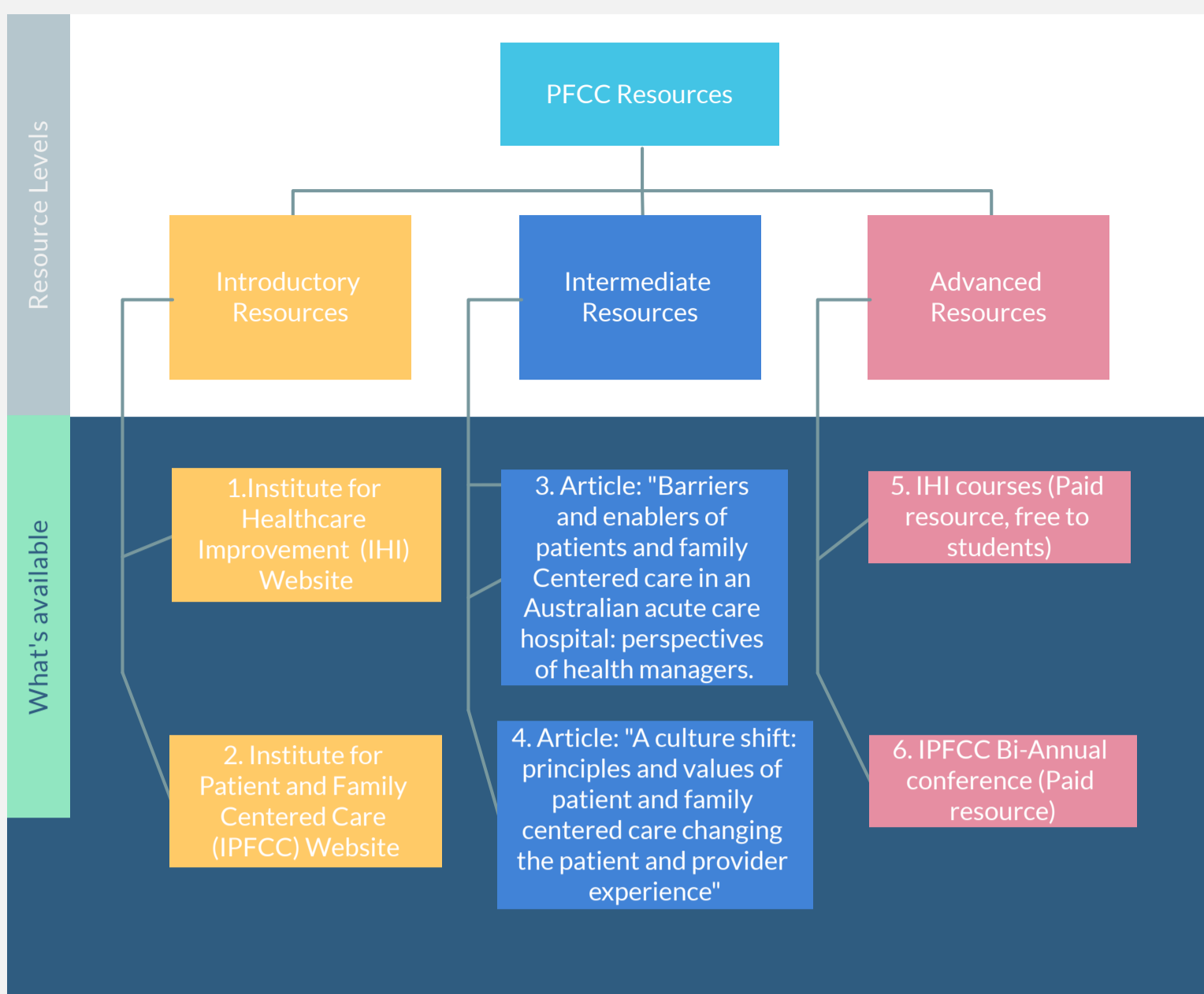


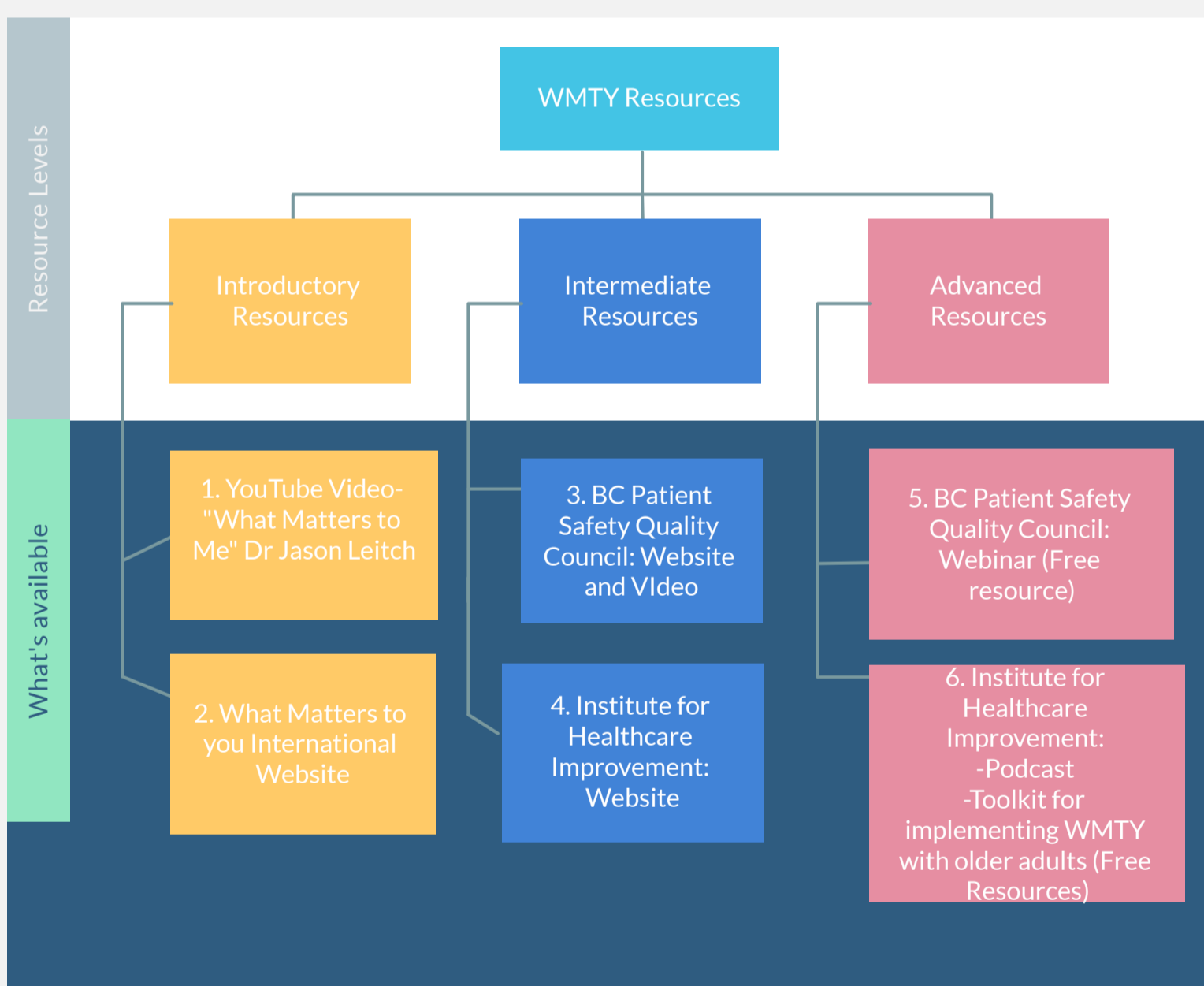
# Patient and Family Centered care



## Links:

1. <http://www.ihl.org/Topics/PFCC/Pages/default.aspx>
2. <https://www.ipfcc.org/about/pfcc.html>
3. Lloyd, B., Elkins, M., & Innes, L. (2018). Barriers and enablers of patient and family centred care in an Australian acute care hospital: perspectives of health managers. Patient Experience Journal, 5(3), 55-64.
4. Lewis, Elizabeth H. MEd A Culture Shift: Principles and Values of Patient and Family-Centered Care Changing the Patient and Provider Experience, Anesthesia & Analgesia: June 2013 –Volume 116 - Issue 6 - p 1191-1192 doi: 10.1213/ANE.0b013e3182884484
5. <http://209.166.136.165/education/ihioptionschool/Pages/default.aspx>
6. <https://www.ipfcc.org/events/conference.html>

# What Matters to You



## Links:

1. [https://www.youtube.com/watch?v=H\\_Z1ZvjKDE](https://www.youtube.com/watch?v=H_Z1ZvjKDE)
2. <https://wmtly.world/>
3. <https://bcpsqc.ca/>
4. <http://www.ihl.org/Topics/WhatMatters/Pages/default.aspx>
5. <https://bcpsqc.ca/resource/the-how-to-of-embedding-what-matters-to-you-september-26-webinar/>
6. <http://www.ihl.org/resources/Pages/AudioandVideo/WIHIWhatMatters.aspx>